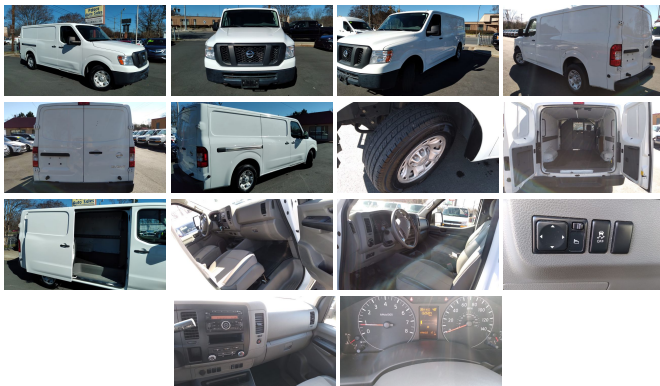


2016 Nissan NV1500 SV

View this car on our website at palaceautosales.com/7046491/ebrochure



Our Price **\$21,899**

Specifications:

Year:	2016
VIN:	1N6BF0KM4GN811933
Make:	Nissan
Stock:	P14484
Model/Trim:	NV1500 SV
Condition:	Pre-Owned
Body:	Minivan/Van
Exterior:	Glacier White
Engine:	Engine: 4.0L DOHC 24-Valve V6
Interior:	Gray
Transmission:	AUTOMATIC
Mileage:	132,669
Drivetrain:	Rear Wheel Drive

PRICES LISTED ARE CASH PRICES; FINANCING AVAILABLE. FOR YOUR CONVENIENCE, NO-HAGGLE PRICING. Prices listed exclude additional applicable fees. FOR MORE PICTURES AND DETAILS LOG ONTO OUR WEBSITE: WWW.PALACEAUTOSALES.COM

Vehicle History Report : as Of 01/28/2022



Snapshot

2016 NISSAN NV 1500 S/SV/2500 S/SV/SL



Accident reported: severe damage



MINOR MODERATE SEVERE



CARFAX 1-Owner vehicle



17 Service history records



Commercial vehicle



132,669 Last reported odometer reading



FREE CARFAX Report

See the full CARFAX Report for additional information

*carfax Snapshot is a reflection of available information on the date the report was pulled. carfax is constantly being updated with new information and is subject to change at any time.

Our Location :



2016 Nissan NV1500 SV

Palace Auto Sales - (704) 921-6700 - View this car on our website at palaceautosales.com/7046491/ebrochure

Installed Options

Interior

- 2 12V DC Power Outlets- Analog Appearance
- Captain's Chairs -inc: driver's and passenger's 4-way manual seats and fold-down passenger seat w/seat back tray table
- Cargo Space Lights- Cloth Seat Trim -inc: water-repellant feature w/vinyl wear bolsters
- Cruise Control w/Steering Wheel Controls- Delayed Accessory Power- Driver Foot Rest
- Driver Seat- Fade-To-Off Interior Lighting- Front Cloth Headliner- Front Cupholder
- Front Only Vinyl/Rubber Floor Covering
- Gauges -inc: Speedometer, Odometer, Voltmeter, Oil Pressure, Engine Coolant Temp, Tachometer, Transmission Fluid Temp, Trip Odometer and Trip Computer
- Glove Box- Instrument Panel Bin, Driver And Passenger Door Bins
- Interior Trim -inc: Metal-Look Interior Accents - Manual Adjustable Front Head Restraints
- Manual Air Conditioning- Manual Tilt Steering Column
- Mini Overhead Console w/Storage and 2 12V DC Power Outlets- Outside Temp Gauge
- Passenger Seat- Power 1st Row Windows w/Driver 1-Touch Down
- Power Door Locks w/Autolock Feature
- Remote Keyless Entry w/Illuminated Entry and Panic Button- Systems Monitor
- Trip Computer- Urethane Gear Shifter Material- Vinyl/Rubber Mat

Exterior

- Aero-Composite Halogen Daytime Running Headlamps- Black Door Handles
- Black Front Bumper- Black Grille
- Black Power Side Mirrors w/Convex Spotter and Manual Folding
- Black Rear Step Bumper- Black Side Windows Trim and Black Front Windshield Trim
- Clearcoat Paint- Front Windshield -inc: Sun Visor Strip
- Full-Size Spare Tire Stored Underbody w/Crankdown- Fully Galvanized Steel Panels
- Light Tinted Glass- Sliding Rear Passenger Side Door
- Speed Sensitive Variable Intermittent Wipers- Split Swing-Out Rear Cargo Access
- Steel Spare Wheel- Tailgate/Rear Door Lock Included w/Power Door Locks
- Tires: LT245/70/R17 AS- Wheels: 17" Styled Steel

Safety

- 2 12V DC Power Outlets- Analog Appearance
- Captain's Chairs -inc: driver's and passenger's 4-way manual seats and fold-down passenger seat w/seat back tray table
- Cargo Space Lights- Cloth Seat Trim -inc: water-repellant feature w/vinyl wear bolsters
- Cruise Control w/Steering Wheel Controls- Delayed Accessory Power- Driver Foot Rest
- Driver Seat- Fade-To-Off Interior Lighting- Front Cloth Headliner- Front Cupholder
- Front Only Vinyl/Rubber Floor Covering
- Gauges -inc: Speedometer, Odometer, Voltmeter, Oil Pressure, Engine Coolant Temp, Tachometer, Transmission Fluid Temp, Trip Odometer and Trip Computer
- Glove Box- Instrument Panel Bin, Driver And Passenger Door Bins
- Interior Trim -inc: Metal-Look Interior Accents - Manual Adjustable Front Head Restraints
- Manual Air Conditioning- Manual Tilt Steering Column
- Mini Overhead Console w/Storage and 2 12V DC Power Outlets- Outside Temp Gauge
- Passenger Seat- Power 1st Row Windows w/Driver 1-Touch Down
- Power Door Locks w/Autolock Feature
- Remote Keyless Entry w/Illuminated Entry and Panic Button- Systems Monitor
- Trip Computer- Urethane Gear Shifter Material- Vinyl/Rubber Mat

Mechanical

- 130 Amp Alternator- 2682# Maximum Payload- 28 Gal. Fuel Tank- 3.36 Axle Ratio
- 4-Wheel Disc Brakes w/4-Wheel ABS, Front And Rear Vented Discs and Brake Assist
- 70-Amp/Hr 650CCA Maintenance-Free Battery w/Run Down Protection
- Brake Actuated Limited Slip Differential
- Double Wishbone Front Suspension w/Coil Springs- Engine: 4.0L DOHC 24-Valve V6
- Front And Rear Anti-Roll Bars- GVWR: 8,550 lbs
- Hydraulic Power-Assist Speed-Sensing Steering- Leaf Rear Suspension w/Leaf Springs
- Rear-Wheel Drive- Single Stainless Steel Exhaust
- Transmission w/Driver Selectable Mode, Sequential Shift Control and Oil Cooler
- Transmission: 5-Speed Automatic



palaceautosales.com

(704) 921-6700

4104 N. Tryon St.

CHARLOTTE, North Carolina 28206

© 2022 AutoRevo - All rights reserved. - Powered by AutoRevo