

2019 Chevrolet Corvette 1LT

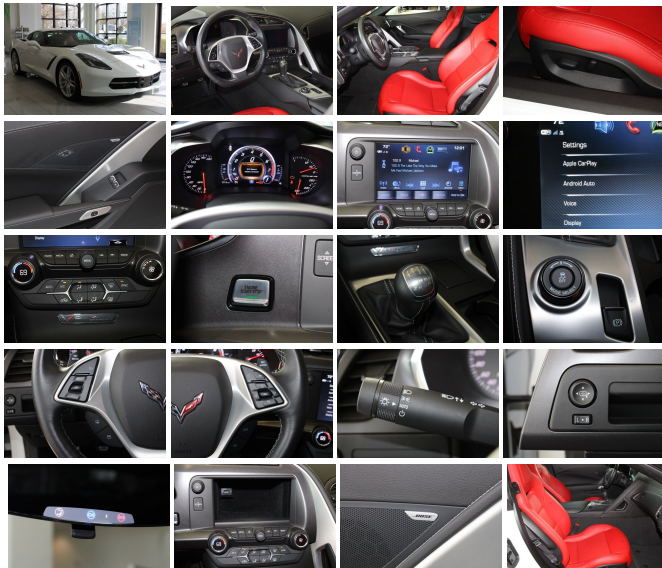
View this car on our website at parksdeals.com/7046018/ebrochure



Our Price **\$59,991**

Specifications:

Year:	2019
VIN:	1G1YA2D76K5122170
Make:	Chevrolet
Stock:	3H3689
Model/Trim:	Corvette 1LT
Condition:	Pre-Owned
Body:	Coupe
Exterior:	Arctic White
Engine:	ENGINE, 6.2L (376 CI) V8 DI
Interior:	Adrenaline Red Leather
Mileage:	4,952
Drivetrain:	Rear Wheel Drive
Economy:	City 15 / Highway 25



2019 Chevrolet Corvette Stingray 1LT 1LT Apple CarPlay/Android Auto, Power driver seat, Power steering, Preferred Equipment Group 1LT, LT. Deliver. CARFAX One-Owner. Clean CARFAX. Odometer is 13512 miles below market average! Awards:

* 2019 KBB.com 10 Best Road Trip Cars

\$1000 - Dealer Trade-in Allowance (Must own and trade a 2015 or newer passenger vehicle to qualify for the Dealer Trade-in Allowance), Allowance is \$1000 above True Car Cash Offer. This offer is based on the current condition of the vehicle and must be appraised at the Dealership to receive the Trade-In Allowance. \$1000 is reflected in the vehicle discount. \$1000 - Dealer Finance Discount (Must qualify and finance with GM Financial, not available with special financing rates or programs.) You may or may not qualify for all rebates. Price does not include tax, tag, and fees. Price does not include any aftermarket products, bodies, or upfits. Price includes applicable rebates: Contact us online at www.parkschevrolethuntersville.com or give us a call at (704) 875-6558 to have your questions answered, obtain a price quote for this vehicle, or schedule your test drive today. Our prices cannot be beat! Come visit us at 15235 STATESVILLE ROAD HUNTERSVILLE NC 28078.

Vehicle History Report : as Of 04/19/2024

CARFAX

Snapshot

2019 CHEVROLET CORVETTE STINGRAY



No accidents or damage reported to CARFAX



13 Service history records



3 Previous owners



Personal vehicle



Last owned in North Carolina



20,314 Last reported odometer reading



FREE CARFAX Report

See the full CARFAX Report for additional information

*carfax Snapshot is a reflection of available information on the date the report was pulled. carfax is constantly being updated with new information and is subject to change at any time.

Our Location :



2019 Chevrolet Corvette 1LT

Parks Chevrolet, Inc. - 833-825-2763 - View this car on our website at parksdeals.com/7046018/ebrochure

Installed Options

Interior

- Seats, GT bucket- Perforated Mulan leather seating surfaces
- Console, floor 2 covered cup holders, auxiliary power outlet, USB ports, auxiliary input jack and storage
- Floor mats, carpeted- Door locks, power programmable with lockout protection
- Keyless Open and Start includes 2 remote transmitters that enable automatic door unlock and open by touching door switch
- Theft-deterrent system, vehicle, push button start, immobilizer and audible visual alarm
- 1LT interior trim seats only in interior color selected
- Seat adjusters, driver and passenger 8-way - Steering column, power tilt and telescopic
- Steering wheel, 3-spoke leather-wrapped, flat-bottom
- Steering wheel controls, audio, voice recognition and Driver Information Center
- Driver Information Center, color- Oil life monitoring system
- Windows, power with driver and passenger Express-Down/Up
- Cruise control, electronic with set and resume speed - Hatch release, push button open
- Air conditioning, dual-zone automatic climate control with individual climate settings for driver and dedicated passenger controls and outside temperature display
- Air filtration system with pollen filter- Defogger, rear-window, electric
- Visors, driver and passenger illuminated vanity mirrors
- Lighting, interior with courtesy, cargo and glovebox

Option Packages

Factory Installed Packages

ENGINE, 6.2L (376 CI) V8 DI
(455 hp [339.3 kW] @ 6000 rpm, 460 lb-ft of torque [621.0 N-m] @ 4600 rpm)

- Storage, with electric locking glovebox, behind screen storage, center console and rear compartment with cover

Exterior

- Wheels, Z51-style 5-split spoke, Silver-painted aluminum 19" x 8.5" (48.3 cm x 21.6 cm) front and 20" x 10" (50.8 cm x 25.4 cm) rear
- Tires, P245/35ZR19 front and P285/30ZR20 rear, performance, summer-only, run flat (Do not use summer only tires in winter conditions, as it would adversely affect vehicle safety, performance and durability. Use only GM-approved tire and wheel combinations. Unapproved combinations may change the vehicle's performance characteristics. For important tire and wheel information, go to <https://my.chevrolet.com/learnAbout/chevrolettires> or see your dealer.)
- Engine access, rear-opening hood
- Roof panel, carbon fiber, painted body-color, removable- Chrome Badge Package
- Vents, exterior, carbon flash
- Headlamps, high intensity discharge (HID), Xenon LED park and turn signals and Daytime Running Lamps
- Mirrors, outside heated power-adjustable, body-color- Glass, Solar-Ray light-tinted
- Wipers, front intermittent

Safety

- Seats, GT bucket- Perforated Mulan leather seating surfaces
- Console, floor 2 covered cup holders, auxiliary power outlet, USB ports, auxiliary input jack and storage
- Floor mats, carpeted- Door locks, power programmable with lockout protection
- Keyless Open and Start includes 2 remote transmitters that enable automatic door unlock and open by touching door switch
- Theft-deterrent system, vehicle, push button start, immobilizer and audible visual alarm
- 1LT interior trim seats only in interior color selected
- Seat adjusters, driver and passenger 8-way - Steering column, power tilt and telescopic
- Steering wheel, 3-spoke leather-wrapped, flat-bottom
- Steering wheel controls, audio, voice recognition and Driver Information Center
- Driver Information Center, color- Oil life monitoring system
- Windows, power with driver and passenger Express-Down/Up
- Cruise control, electronic with set and resume speed - Hatch release, push button open
- Air conditioning, dual-zone automatic climate control with individual climate settings for driver and dedicated passenger controls and outside temperature display
- Air filtration system with pollen filter- Defogger, rear-window, electric
- Visors, driver and passenger illuminated vanity mirrors
- Lighting, interior with courtesy, cargo and glovebox
- Storage, with electric locking glovebox, behind screen storage, center console and rear compartment with cover

Mechanical

- Transmission, 7-speed manual with Active Rev Matching
- Rear axle, 3.42 ratio, limited slip
- Engine, 6.2L (376 ci) V8 DI (455 hp [339.3 kW] @ 6000 rpm, 460 lb-ft of torque [621.0 N-m] @ 4600 rpm)
- Rear wheel drive- Frame, aluminum structure- Suspension, 4-wheel independent
- Steering, power, speed-sensitive rack-and-pinion, variable ratio
- Brakes, 4-wheel antilock, 4-wheel disc- Calipers, Dark Gray Metallic-painted
- Exhaust, aluminized stainless-steel with 3" polished stainless-steel tips

Parks Chevrolet, Inc.

parksdeals.com

833-825-2763

615 NC-66 South

Kernersville, NC 27284

© 2024 AutoRevo - All rights reserved. - Powered by AutoRevo