



## 2016 Cadillac CTS Sedan Luxury Collection RWD

**Our Price \$25,882**

View this vehicle on our website at [parksdeals.com](http://parksdeals.com)

Parks Chevrolet, Inc.

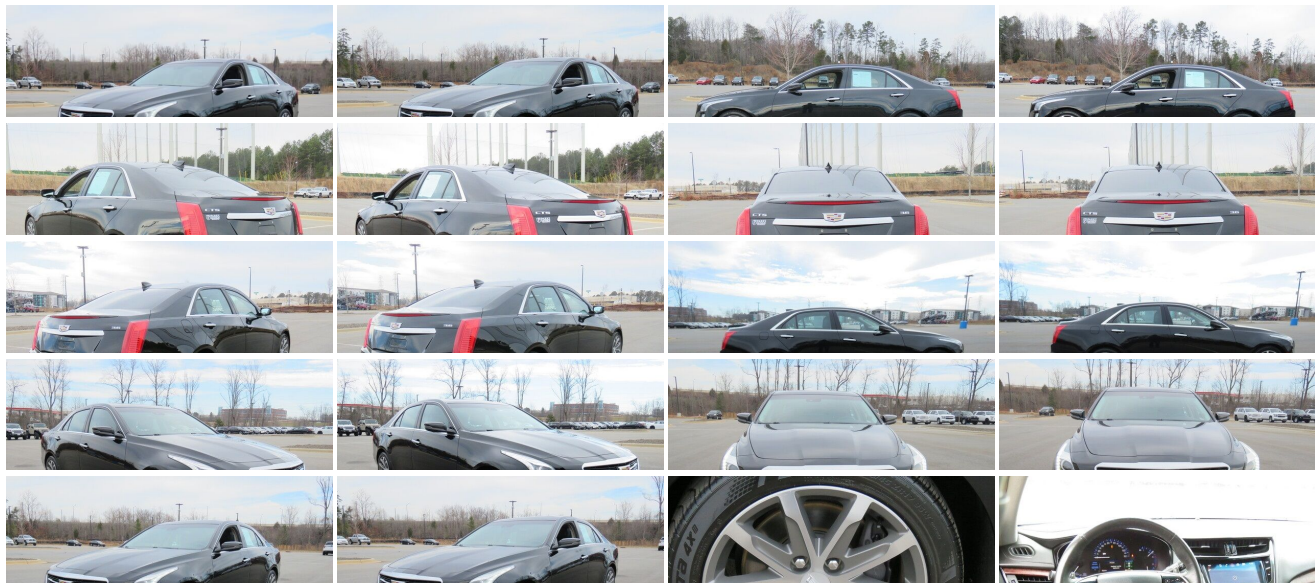
[833-825-2763](tel:833-825-2763)

615 NC-66 South, Kernersville, NC 27284

Photos

Details

Contact



## Specifications:

<b>Year:</b>	2016
<b>VIN:</b>	1G6AR5SS6G0160211
<b>Make:</b>	Cadillac
<b>Stock:</b>	2C3594
<b>Model/Trim:</b>	CTS Sedan Luxury Collection RWD
<b>Condition:</b>	Pre-Owned
<b>Body:</b>	Sedan
<b>Exterior:</b>	Black Raven
<b>Engine:</b>	ENGINE, 3.6L V6, SIDI, DOHC, VVT
<b>Interior:</b>	Jet Black With Jet Black Accents Leather
<b>Mileage:</b>	62,395
<b>Drivetrain:</b>	Rear Wheel Drive
<b>Economy:</b>	City 20 / Highway 30

## Vehicle Description

2016 Cadillac CTS 3.6L Luxury

Auto High-beam Headlights, Exterior Parking Camera Rear, Forward Collision Alert, Four wheel independent suspension, Front dual zone A/C, Genuine wood console insert, Genuine wood dashboard insert, Genuine wood door panel insert, Heated Driver & Front Passenger Seats, Heated steering wheel, Lane Change Alert, Lane Keep Assist w/Lane Departure Warning, Leather Seating Surfaces, Navigation System, Power moonroof, Rain sensing wipers, Rear Cross Traffic Alert, Rear Parking Sensors, Remote keyless entry, Side Blind Zone Alert, UltraView Power Sunroof, Ventilated front seats. Clean CARFAX.

20/30 City/Highway MPG

Call 704.288.0662 to check on the availability of this vehicle and schedule a private showing or shop 24 hours a day @ [WWW.PARKSCHARLOTTE.COM](http://WWW.PARKSCHARLOTTE.COM). \*All prices are plus tax, tag, title, and documentation. All vehicles are fully reconditioned by a Master ASE Factory Trained Certified Technician.

### Installed Options

#### Interior

- Seats, front bucket- Leather seating surfaces
- Seats, heated driver and front passenger
- Seats, heated/ventilated driver and front passenger seat cushion and seat back
- Floor mats, carpeted front and rear- Steering column, power tilt and telescoping
- Steering wheel, heated rim
- Steering wheel controls, mounted controls for audio, phone and cruise
- Door locks, power programmable with lockout protection- Keyless Access, passive entry
- Universal Home Remote includes garage door opener, 3-channel programmable
- Cruise control, electronic with set and resume speed, and with 1 mph and 5 mph increment adjustment
- Theft-deterrent system, vehicle with immobilizer
- Console, overhead includes reading lamps and controls for (UG1) Universal Home Remote, (UE1) OnStar, (DB3) power rear window sunshade (if equipped) and (C3U) UltraView power sunroof (if equipped)
- Seat adjusters, driver and front passenger 8-way power plus 4-way power lumbar, plus 4-way manual adjustable head restraints
- Seat, rear split-folding with armrest, lockable seatback and lockable rear pass-through access door
- Headrests, rear, outboard seats, adjustable 2-way
- Console, front floor with shifter, armrest and covered storage - Armrest, front center
- Armrest, rear center with cup holders - Cup holders, 2 in front console, 2 in rear armrest
- Power outlets, 3 auxiliary- Steering wheel, leather-wrapped
- Steering wheel mounted Paddle Shift Controls
- Gauge cluster, 5.7" color display includes driver personalization, warning messages and vehicle information
- Instrument cluster, electroluminescent- Engine oil indicator
- Windows, power with front and rear express-up and down with passenger lockout feature
- Retained accessory power power windows, sunroof (when equipped) and audio system remain operational for 10 minutes after the ignition is switched off or until the driver's door

### Option Packages

#### Factory Installed Packages

ENGINE, 3.6L V6, SIDI, DOHC, VVT  
with Active Fuel Management and automatic  
start/stop (335 hp [250 kW] @ 6800 rpm, 285 lb-  
ft of torque [386 N-m] @ 5300 rpm)

is opened

- Adaptive Remote Start- Trunk release, power, remote
- Climate control, dual-zone automatic- Air filtration system- Sunroof, UltraView, power
- Defogger, rear-window electric with front and side window outlets for the driver and front passenger
- Glovebox, electric, lockable- Mirror, inside rearview auto-dimming, frameless
- Visors, driver and front passenger illuminated vanity mirrors
- Lighting, interior includes glovebox, front cup holders, overhead console, front and rear passenger footwell, map pockets, rear assist handles and cargo area
- Lighting accent, LED lighting on instrument panel and door
- Coat hooks, located on rear left and right assist handles - Cargo convenience net, trunk

---

## Exterior

- Wheels, 17" x 8.5" (43.2 cm x 21.6 cm) 10-spoke ultra-bright machined finish alloy with dark painted pockets (Upgradeable to (RCV) 18" x 8.5" 7-spoke polished alloy wheels, (RT5) 18" x 8.5" 15-spoke premium painted alloy wheels or (RCW) 18" x 8.5" 15-spoke polished alloy wheels.)
- Tires, P245/45R17 all-season, blackwall, run-flat
- Mirrors, outside heated power adjustable and driver-side auto-dimming, body-color, manual folding with integrated turn signal indicators and puddle lamps
- Wipers, front intermittent- Wipers, Rainsense- Grille, active aero
- Headlamps, high intensity discharge includes Adaptive Forward Lighting and LED vertical light signatures
- Headlamps, IntelliBeam- Lamp marker, reflex, front side
- Lamp, LED center high-mounted stop/brake (CHMSL)
- Glass, solar absorbing, windshield- Glass, Solar-Ray
- Windows, laminated glass, front side

---

## Safety

- Seats, front bucket- Leather seating surfaces
- Seats, heated driver and front passenger
- Seats, heated/ventilated driver and front passenger seat cushion and seat back
- Floor mats, carpeted front and rear - Steering column, power tilt and telescoping
- Steering wheel, heated rim
- Steering wheel controls, mounted controls for audio, phone and cruise
- Door locks, power programmable with lockout protection- Keyless Access, passive entry
- Universal Home Remote includes garage door opener, 3-channel programmable
- Cruise control, electronic with set and resume speed, and with 1 mph and 5 mph increment adjustment
- Theft-deterrent system, vehicle with immobilizer
- Console, overhead includes reading lamps and controls for (UG1) Universal Home Remote, (UE1) OnStar, (DB3) power rear window sunshade (if equipped) and (C3U) UltraView power sunroof (if equipped)
- Seat adjusters, driver and front passenger 8-way power plus 4-way power lumbar, plus 4-way manual adjustable head restraints
- Seat, rear split-folding with armrest, lockable seatback and lockable rear pass-through access door
- Headrests, rear, outboard seats, adjustable 2-way
- Console, front floor with shifter, armrest and covered storage - Armrest, front center
- Armrest, rear center with cup holders - Cup holders, 2 in front console, 2 in rear armrest
- Power outlets, 3 auxiliary- Steering wheel, leather-wrapped
- Steering wheel mounted Paddle Shift Controls
- Gauge cluster, 5.7" color display includes driver personalization, warning messages and vehicle information
- Instrument cluster, electroluminescent- Engine oil indicator
- Windows, power with front and rear express-up and down with passenger lockout feature
- Retained accessory power power windows, sunroof (when equipped) and audio system remain operational for 10 minutes after the ignition is switched off or until the driver's door is opened
- Adaptive Remote Start- Trunk release, power, remote
- Climate control, dual-zone automatic- Air filtration system- Sunroof, UltraView, power
- Defogger, rear-window electric with front and side window outlets for the driver and front passenger
- Glovebox, electric, lockable- Mirror, inside rearview auto-dimming, frameless
- Visors, driver and front passenger illuminated vanity mirrors
- Lighting, interior includes glovebox, front cup holders, overhead console, front and rear passenger footwell, map pockets, rear assist handles and cargo area
- Lighting accent, LED lighting on instrument panel and door
- Coat hooks, located on rear left and right assist handles - Cargo convenience net, trunk

---

## Mechanical

- Transmission, 8-speed automatic- Keyless ignition, push button start
- Engine, 3.6L V6, SIDI, DOHC, VVT with Active Fuel Management and automatic start/stop [335 hp [250 kW] @ 6800 rpm, 285 lb-ft of torque [386 N-m] @ 5300 rpm]

- Automatic Start/Stop- Rear axle, 2.85 ratio- Drivetrain, rear-wheel drive
- Battery, maintenance-free with rundown protection
- Recovery hook, front or rear location- Suspension, Sport
- Steering, ZF premium rack-and-pinion, electric
- Brakes, Brembo front, performance 4-wheel antilock, 4-wheel disc
- Brake, electronic parking- Exhaust, dual

Parks Chevrolet, Inc.

Parks Chevrolet, Inc.

View this car on our website at [parksdeals.com/7046010](https://parksdeals.com/7046010)

Website: [parksdeals.com](https://parksdeals.com)

Phone: [833-825-2763](tel:833-825-2763)

Map: [615 NC-66 South, Kernersville, NC 27284](#)

