

2015 Subaru Legacy 2.5i Premium

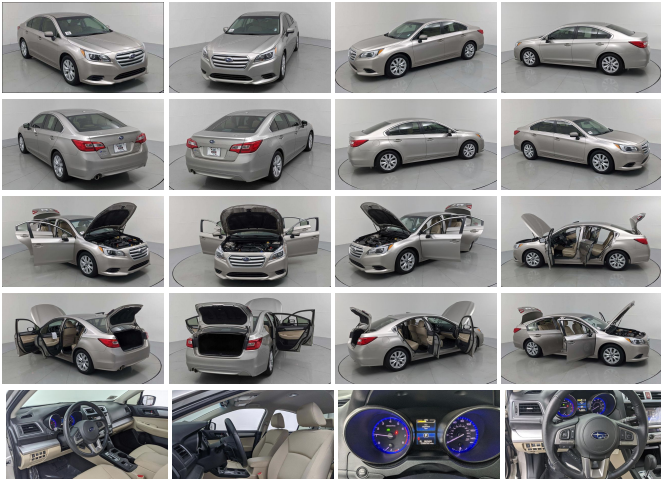
View this car on our website at charlestonautosales.com/7045613/ebrochure



Lowest **\$18,997**

Specifications:

Year:	2015
VIN:	4S3BNBC60F3063497
Make:	Subaru
Stock:	414018P
Model/Trim:	Legacy 2.5i Premium
Condition:	Pre-Owned
Body:	Sedan
Exterior:	Tungsten
Engine:	Engine: 2.5L DOHC 16 Valve 4-Cylinder - inc: Active Valve Control System (AVCS), Variable Valve Timing and Electronic Throttle Control (ETC)
Interior:	Warm Ivory Cloth
Mileage:	38,250
Economy:	City 26 / Highway 36



Was \$20,916, FUEL EFFICIENT 36 MPG Hwy/26 MPG City! Crews Forever, Excellent Condition, LOW MILES - 38,250! Heated Seats, CD Player, Bluetooth, Dual Zone A/C, Smart Device Integration, Cross-Traffic Alert, All Wheel Drive, Aluminum Wheels EXCELLENT VALUE Was \$20,916. EXPERTS CONCLUDE Edmunds.com explains 'Standard all-wheel drive excellent outward visibility spacious cabin top crash test scores.'. Great Gas Mileage: 36 MPG Hwy. SHOP WITH CONFIDENCE Passed our 152-point inspection for safety and reliability. Powertrain Lifetime Limited Warranty. Clean title and includes a free CARFAX Vehicle History Report. KEY FEATURES INCLUDE All Wheel Drive, Heated Driver Seat, Back-Up Camera, Satellite Radio, iPod/MP3 Input, Bluetooth, CD Player, Aluminum Wheels, Dual Zone A/C, Cross-Traffic Alert, Smart Device Integration, Heated Seats. MP3 Player, Keyless Entry, Remote Trunk Release, Child Safety Locks, Steering Wheel Controls. OPTION PACKAGES EC MIRROR W/COMPASS Part number H501SAL000. Safety equipment includes Cross-Traffic Alert, Electronic Stability Control, Brake Assist, 4-Wheel ABS, Tire Pressure Monitoring System, 4-Wheel Disc Brakes. Subaru 2.5i Premium with Tungsten Metallic exterior and Warm Ivory interior features a 4 Cylinder Engine with 175 HP at 5800 RPM*. Serviced here, Non-Smoker vehicle, COMES WITH OUR CREWS FOREVER PROTECTION PLAN, CLEAN CARFAX AND ONE OWNER TRADE-IN VISIT US TODAY You've got a friend in the car business. Pricing analysis performed on 1/22/2022. Horsepower calculations based on trim engine configuration. Fuel economy calculations based on original manufacturer data for trim engine configuration. Please confirm the accuracy of the included equipment by calling us prior to purchase.

Our Location :



2015 Subaru Legacy 2.5i Premium

Charleston Auto Sales - (843) 297-3211 - View this car on our website at charlestonautosales.com/7045613/ebrochure

Installed Options

Interior

- Heated Reclining Front Bucket Seats -inc: height and tilt adjustable head restraints, whiplash protection, driver 10-way power (includes power lumbar), passenger full width seat fore/aft adjustment lever and seatback pocket
- Driver Seat- 4-Way Passenger Seat
- 60-40 Folding Bench Front Facing Fold Forward Seatback Rear Seat
- Manual Tilt/Telescoping Steering Column
- Gauges -inc: Speedometer, Odometer, Engine Coolant Temp, Tachometer, Trip Odometer and Trip Computer
- Power Rear Windows- Aha Selective Service Internet Access
- Leather/Metal-Look Steering Wheel- Front Cupholder- Rear Cupholder- Valet Function
- Remote Keyless Entry w/Integrated Key Transmitter, 2 Door Curb/Courtesy, Illuminated Entry, Illuminated Ignition Switch and Panic Button
- Remote Releases -Inc: Power Cargo Access and Mechanical Fuel
- Cruise Control w/Steering Wheel Controls- Dual Zone Front Automatic Air Conditioning
- HVAC -inc: Underseat Ducts- Illuminated Locking Glove Box- Driver Foot Rest
- Full Cloth Headliner- Leather/Metal-Look Gear Shifter Material
- Interior Trim -inc: Metal-Look Instrument Panel Insert, Metal-Look Door Panel Insert, Metal-Look Console Insert and Chrome Interior Accents
- Cloth Door Trim Insert- Cloth Upholstery- Day-Night Rearview Mirror
- Driver And Passenger Visor Vanity Mirrors w/Driver And Passenger Illumination
- Full Floor Console w/Covered Storage, Mini Overhead Console w/Storage and 2 12V DC Power Outlets
- Front Map Lights- Fade-To-Off Interior Lighting
- Full Carpet Floor Covering -inc: Carpet Front And Rear Floor Mats
- Carpet Floor Trim, Carpet Trunk Lid/Rear Cargo Door Trim and Carpet Mat
- Cargo Area Concealed Storage- Cargo Space Lights- FOB Controls -inc: Cargo Access
- Vehicle Information Display -inc: average vehicle speed, fuel economy: current and average fuel economy a and b and distance to empty, fuel economy: evaluation information, journey

travel time and distance, rear cross traffic alert, rear-vision camera, self check and vehicle maintenance reminder, user configurable triple meter, vehicle activation status, vdc operation, vehicle drivetrain monitoring

- Rear-Vision Camera
- Instrument Panel Covered Bin, Driver / Passenger And Rear Door Bins
- Power 1st Row Windows w/Driver And Passenger 1-Touch Up/Down - Power Door Locks
- Trip Computer- Outside Temp Gauge- Analog Appearance
- Manual Adjustable Rear Head Restraints
- Front Center Armrest w/Storage and Rear Center Armrest- Perimeter Alarm
- Engine Immobilizer- 2 12V DC Power Outlets- Air Filtration

Exterior

- Wheels: 17" x 7.5" Aluminum Alloy w/Silver Finish -inc: dark gray aluminum alloy center cap w/Subaru 6 star logo
- Tires: P225/55R17 97V All Season- Aluminum Spare Wheel
- Compact Spare Tire Mounted Inside Under Cargo- Clearcoat Paint
- Body-Colored Front Bumper- Body-Colored Rear Bumper- Rocker Panel Extensions
- Chrome Side Windows Trim- Body-Colored Door Handles
- Body-Colored Power Heated Side Mirrors w/Manual Folding
- Fixed Rear Window w/Defroster- Light Tinted Glass
- Variable Intermittent Wipers w/Heated Wiper Park- Front Windshield -inc: Sun Visor Strip
- Galvanized Steel/Aluminum Panels- Chrome Grille- Trunk Rear Cargo Access
- Perimeter/Approach Lights- LED Brake Lights
- Auto On/Off Projector Beam Halogen Daytime Running Headlamps

Safety

- Heated Reclining Front Bucket Seats -inc: height and tilt adjustable head restraints, whiplash protection, driver 10-way power (includes power lumbar), passenger full width seat fore/aft adjustment lever and seatback pocket
- Driver Seat- 4-Way Passenger Seat
- 60-40 Folding Bench Front Facing Fold Forward Seatback Rear Seat
- Manual Tilt/Telescoping Steering Column
- Gauges -inc: Speedometer, Odometer, Engine Coolant Temp, Tachometer, Trip Odometer and Trip Computer
- Power Rear Windows- Aha Selective Service Internet Access
- Leather/Metal-Look Steering Wheel- Front Cupholder- Rear Cupholder- Valet Function
- Remote Keyless Entry w/Integrated Key Transmitter, 2 Door Curb/Courtesy, Illuminated Entry, Illuminated Ignition Switch and Panic Button
- Remote Releases -Inc: Power Cargo Access and Mechanical Fuel
- Cruise Control w/Steering Wheel Controls- Dual Zone Front Automatic Air Conditioning
- HVAC -inc: Underseat Ducts- Illuminated Locking Glove Box- Driver Foot Rest
- Full Cloth Headliner- Leather/Metal-Look Gear Shifter Material
- Interior Trim -inc: Metal-Look Instrument Panel Insert, Metal-Look Door Panel Insert, Metal-Look Console Insert and Chrome Interior Accents
- Cloth Door Trim Insert- Cloth Upholstery- Day-Night Rearview Mirror
- Driver And Passenger Visor Vanity Mirrors w/Driver And Passenger Illumination
- Full Floor Console w/Covered Storage, Mini Overhead Console w/Storage and 2 12V DC Power Outlets
- Front Map Lights- Fade-To-Off Interior Lighting
- Full Carpet Floor Covering -inc: Carpet Front And Rear Floor Mats
- Carpet Floor Trim, Carpet Trunk Lid/Rear Cargo Door Trim and Carpet Mat
- Cargo Area Concealed Storage- Cargo Space Lights- FOB Controls -inc: Cargo Access
- Vehicle Information Display -inc: average vehicle speed, fuel economy: current and average fuel economy a and b and distance to empty, fuel economy: evaluation information, journey travel time and distance, rear cross traffic alert, rear-vision camera, self check and vehicle maintenance reminder, user configurable triple meter, vehicle activation status, vdc operation, vehicle drivetrain monitoring
- Rear-Vision Camera
- Instrument Panel Covered Bin, Driver / Passenger And Rear Door Bins
- Power 1st Row Windows w/Driver And Passenger 1-Touch Up/Down - Power Door Locks
- Trip Computer- Outside Temp Gauge- Analog Appearance
- Manual Adjustable Rear Head Restraints
- Front Center Armrest w/Storage and Rear Center Armrest- Perimeter Alarm
- Engine Immobilizer- 2 12V DC Power Outlets- Air Filtration

Mechanical

- Engine: 2.5L DOHC 16 Valve 4-Cylinder -inc: Active Valve Control System (AVCS), Variable Valve Timing and Electronic Throttle Control (ETC)
- Transmission: Lineartronic Continuously Variable -inc: 6-speed manual shift mode
- Steering-Wheel Paddle-Shift Control Switches- Full-Time All-Wheel- 3.90 Axle Ratio
- 490CCA Maintenance-Free Battery w/Run Down Protection- 110 Amp Alternator
- Gas-Pressurized Shock Absorbers- Front And Rear Anti-Roll Bars
- Electric Power-Assist Speed-Sensing Steering- 18.5 Gal. Fuel Tank

- Single Stainless Steel Exhaust w/Polished Tailpipe Finisher
 - Strut Front Suspension w/Coil Springs
 - Double Wishbone Rear Suspension w/Coil Springs
 - 4-Wheel Disc Brakes w/4-Wheel ABS, Front And Rear Vented Discs, Brake Assist, Hill Hold Control and Electric Parking Brake
-

Charleston Auto Sales
charlestonautosales.com
(843) 297-3211
8261 Rivers Ave
Charleston, SC 29406

© 2022 AutoRevo - All rights reserved. - Powered by [AutoRevo](#)