



2007 Mercedes-Benz S550 5.5L V8

Our Price \$14,883

Retail Value \$17,280

View this vehicle on our website at altx.com

Auto Locators of Texas

(972) 612-3100

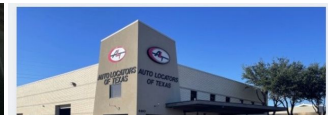
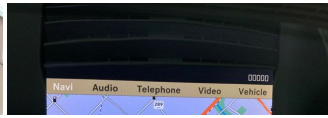
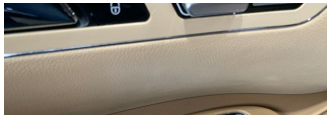
4460 Tradition Trail , Plano, TX 75093

Photos

Details

Contact





Specifications:

Year:	2007
VIN:	WDDNG71X97A053201
Make:	Mercedes-Benz
Stock:	053201
Model/Trim:	S550 5.5L V8
Condition:	Pre-Owned
Body:	Sedan
Exterior:	Obsidian Black Metallic
Engine:	5.5L DOHC SFI 32-valve V8 engine
Interior:	Porcelain Beige Leather
Mileage:	90,910
Drivetrain:	Rear Wheel Drive
Economy:	City 16 / Highway 24

Vehicle Description

LOADED

Installed Options

Interior

- 14-way heated pwr-adjustable front seats-inc: 3-position memory, pwr lumbar support, front center armrest, programmable easy-exit feature
- 20GB hard drive based in-dash GPS navigation system
- Automatic dual-zone climate control-inc: dust/pollen filters, sun/humidity/ dewpoint sensors, tunnel mode w/(1) touch closing of all windows, seat- belt usage sensors (allows climate control to focus first on occupied seats), rear console vents
- COMAND cockpit management/data system-inc: hard drive based DVD navigation system, audio status, 8" color-LCD screen, hands-free communication system controls, (10) soft keys
- Cruise control- Hand-polished Burl Walnut wood trim
- Handsfree communication system w/voice control
- Harmon/kardon Logic7 600-Watt digital surround system-inc: integrated single feed 6-disc CD changer, (14) speakers, 5.1 channel amplifier, digital dynamic volume control, fiber-optic communication among components, PCMCIA slot
- Leather upholstery
- Leather-wrapped steering wheel-inc: mounted shift buttons, audio/voice/ telephone/multifunction display controls
- Multifunction displays in instrument cluster faces-inc: trip computer, exterior temp gauge, maintenance system, oil level check, digital speedometer, reminder/malfunction messages, driver-programmable settings, audio status, navigation route guidance, tire pressure
- On board tire pressure monitoring system
- SmartKey infrared-remote-inc: opening trunk, opening/closing windows/sunroof, panic alarm, fuel filler door, lock/unlock all doors or drivers,
- SmartKey system-inc: remote central locking system, anti-theft engine immobilizer, drive away automatic locking
- Tele Aid global positioning system (GPS) satellite system-inc: stolen vehicle recovery, remote door unlock service, automatic alarm/collision notification
- 4-way tilt/telescoping pwr steering column w/memory
- Active front head restraints w/adjustable height/fore-aft
- Adjustable fiber-optic ambient lighting feature
- Anti-theft client alarm notification w/remote panic feature
- Audible reminders/messages-inc: exterior lamp failure, low fuel, engine oil, coolant, washer fluid, headlights on, remove key from ignition, door/sunroof open
- Auto-dimming rearview mirror- Built in telephone keypad- Chrome-framed analog clock
- Digital instrumentation-inc: speedometer, odometer, Touch Shift gear/shift modes selection
- Dual front/rear reading lamps- Electronic analog tachometer/fuel gauge

- Dual front/rear reading lamps- Electronic analog tachometer/fuel gauge
- Illuminated glove box
- Illuminated trunk w/umbrella holder, grocery bag hooks, tie-down hooks
- Integrated HomeLink compatible (3) button garage door opener - Locator lighting
- Mercedes-Benz Maintenance System Plus display-inc: distance remaining to next maintenance, type of service due, reminders
- Night security illumination- Pwr rear window sunshade w/1-touch express up/down
- Pwr windows w/1-touch express up/down- Quad illuminated vanity mirrors
- Rear folding center armrest-inc: enclosed storage, (2) cupholders
- Rear head restraints in all seating positions w/manually adjustable fore-aft, remote retraction
- Rear window defroster w/auto-shutoff based on time/driving speed/exterior temp
- Stainless steel door sill trim- Touch turn signals (flashes (3) times w/(1) touch)

Exterior

- Pwr tilt/slide tinted glass sunroof w/1-touch express open, memory
- Bi-Xenon high intensity discharge headlamps-inc: polycarbonate lenses, automatic level control, driver-selectable light-sensing auto-on headlamp, automatic lamp substitution
- Dual aero-blade windshield wipers w/rain sensor, heated washer system, heated wiper in parking position
- Dual heated auto-folding pwr mirrors-inc: memory, auto-dimming driver mirror, integrated LED turn-signals
- Front halogen foglamps- Infrared reflective/noise insulating glass- Single rear foglamp
- Variable doorstop

Safety

- 14-way heated pwr-adjustable front seats-inc: 3-position memory, pwr lumbar support, front center armrest, programmable easy-exit feature
- 20GB hard drive based in-dash GPS navigation system
- Automatic dual-zone climate control-inc: dust/pollen filters, sun/humidity/ dewpoint sensors, tunnel mode w/(1) touch closing of all windows, seat- belt usage sensors (allows climate control to focus first on occupied seats), rear console vents
- COMAND cockpit management/data system-inc: hard drive based DVD navigation system, audio status, 8" color-LCD screen, hands-free communication system controls, (10) soft keys
- Cruise control- Hand-polished Burl Walnut wood trim
- Handsfree communication system w/voice control
- Harmon/kardon Logic7 600-Watt digital surround system-inc: integrated single feed 6-disc CD changer, (14) speakers, 5.1 channel amplifier, digital dynamic volume control, fiber-optic communication among components, PCMCIA slot
- Leather upholstery
- Leather-wrapped steering wheel-inc: mounted shift buttons, audio/voice/ telephone/multifunction display controls
- Multifunction displays in instrument cluster faces-inc: trip computer, exterior temp gauge, maintenance system, oil level check, digital speedometer, reminder/malfunction messages, driver-programmable settings, audio status, navigation route guidance, tire pressure
- On board tire pressure monitoring system
- SmartKey infrared-remote-inc: opening trunk, opening/closing windows/sunroof, panic alarm, fuel filler door, lock/unlock all doors or drivers,
- SmartKey system-inc: remote central locking system, anti-theft engine immobilizer, drive away automatic locking
- Tele Aid global positioning system (GPS) satellite system-inc: stolen vehicle recovery, remote door unlock service, automatic alarm/collision notification
- 4-way tilt/telescoping pwr steering column w/memory
- Active front head restraints w/adjustable height/fore-aft
- Adjustable fiber-optic ambient lighting feature
- Anti-theft client alarm notification w/remote panic feature
- Audible reminders/messages-inc: exterior lamp failure, low fuel, engine oil, coolant, washer fluid, headlights on, remove key from ignition, door/sunroof open
- Auto-dimming rearview mirror- Built in telephone keypad- Chrome-framed analog clock
- Digital instrumentation-inc: speedometer, odometer, Touch Shift gear/shift modes selection
- Dual front/rear reading lamps- Electronic analog tachometer/fuel gauge
- Illuminated glove box
- Illuminated trunk w/umbrella holder, grocery bag hooks, tie-down hooks
- Integrated HomeLink compatible (3) button garage door opener - Locator lighting
- Mercedes-Benz Maintenance System Plus display-inc: distance remaining to next maintenance, type of service due, reminders
- Night security illumination- Pwr rear window sunshade w/1-touch express up/down
- Pwr windows w/1-touch express up/down- Quad illuminated vanity mirrors
- Rear folding center armrest-inc: enclosed storage, (2) cupholders
- Rear head restraints in all seating positions w/manually adjustable fore-aft, remote retraction
- Rear window defroster w/auto-shutoff based on time/driving speed/exterior temp
- Stainless steel door sill trim- Touch turn signals (flashes (3) times w/(1) touch)

Mechanical

- 18" x 8.5" 9-spoke light aluminum wheels - 255/45R18 all-season tires
- Anti-lock disc brakes system (ABS) w/brake assist system
- Electronic stability program (ESP)
- 4-link front suspension-inc: antilift control, gas-pressurized shock absorbers, stabilizer bar
- 5.5L DOHC SFI 32-valve V8 engine
- 7-speed automatic drive-adaptive transmission-inc: electronically controlled shifting, comfort mode, Touch Shift
- Airmatic semi-active suspension w/ADS II adaptive damping
- Independent multilink rear suspension w/antisquat, antitive system
- Pwr 4-piston front/1-piston rear vented disc brakes
- Pwr vehicle-speed-sensitive rack & pinion steering- Rear wheel drive

Auto Locators of Texas

Auto Locators of Texas

View this car on our website at altrx.com/7045360

Website: altrx.com

Phone: (972) 612-3100

Map: [4460 Tradition Trail, Plano, TX 75093](#)

