



2017 GMC Sierra 1500 Denali

Our Price \$41,995

View this vehicle on our website at texaseliteexotics.com



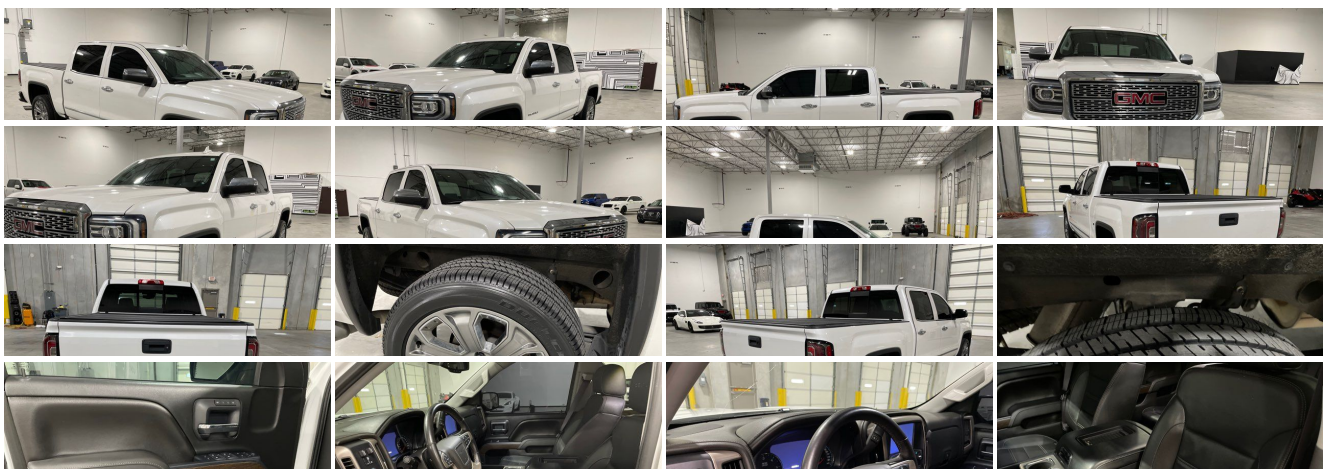
[2816829826](tel:2816829826)

100 Northpark Central Dr. , Houston, TX 77073

[Photos](#)

[Details](#)

[Contact](#)





Specifications:

Year:	2017
VIN:	3GTU2PEJXHG311691
Make:	GMC
Model/Trim:	Sierra 1500 Denali
Condition:	Pre-Owned
Body:	Pickup Truck
Exterior:	White Frost Tricoat
Engine:	ENGINE, 6.2L ECOTEC3 V8 WITH ACTIVE FUEL MANAGEMENT, DIRECT INJECTION
Interior:	Jet Black
Transmission:	TRANSMISSION, 8-SPEED AUTOMATIC, ELECTRONICALLY CONTROLLED
Mileage:	42,120
Economy:	City 15 / Highway 20

Vehicle Description

Insurance Theft Recovery! Save Thousands!

Installed Options

Interior

- Cruise control, steering wheel-mounted- Defogger, rear-window electric
- Door locks, power- Floor mats, color-keyed carpeted first and second row
- Remote Keyless Entry
- Steering wheel, heated, leather wrapped with audio and cruise controls
- Air conditioning, dual-zone automatic climate control
- Assist handle, front passenger and driver on A-pillars
- Console, floor mounted with cup holders, cell phone storage, power cord management, hanging file holder capability and (K4C) wireless charging
- Display, customizable driver display, 8" multi-color configurable
- Floor covering, color-keyed carpeting- Front and Rear Park Assist, Ultrasonic
- Instrumentation, 6-gauge cluster featuring speedometer, fuel level, engine temperature, tachometer, voltage and oil pressure
- Mirror, inside rearview auto-dimming
- OnStar 4G LTE and built-in Wi-Fi hotspot connects to the Internet at 4G LTE speeds; includes OnStar Data Trial for 3 months or 3GB (whichever comes first) (Visit www.onstar.com for coverage map, details and system limitations. Services vary by model. OnStar acts as a link to existing emergency service providers. Not all vehicles may transmit all crash data. Available Wi-Fi requires compatible mobile device, active OnStar service and data plan. Data plans provided by AT&T.)
- OnStar Guidance Plan for 3 months, including Automatic Crash Response, Stolen Vehicle Assistance, Roadside Assistance, Turn-by-Turn Navigation, Advanced Diagnostics and more (trial excludes Hands-Free Calling) (Fleet orders receive a 6-month trial. Visit www.onstar.com for coverage map, details and system limitations. Services vary by model. OnStar acts as a link to existing emergency service providers. Not all vehicles may transmit all crash data.)
- Pedals, power-adjustable- Power outlet, 110-volt AC- Remote vehicle starter system
- Seat, rear 60/40 folding bench (folds up), 3-passenger (includes child seat top tether anchor)
- Seating, heated and ventilated perforated leather-appointed front bucket
- Seats, front full-feature leather-appointed bucket with (KA1) heated seat cushions and seat backs. Includes 12-way power driver and front passenger seat adjusters, including 4-way power lumbar control, 2-position driver memory, adjustable head restraints, (D07) floor console and storage pockets and (K4C) wireless charging
- Steering column, manual Tilt-Wheel and telescoping
- Theft-deterrent system, unauthorized entry- Universal Home Remote
- Visors, driver and front passenger illuminated vanity mirrors
- Windows, power with driver express up and down and express down on all other windows

Exterior

Exterior

- Assist steps, chromed tubular, 6" rectangular (factory installed) (May delete (BVQ) and add (BRS) power assist step or LPO assist steps (VXJ) by selecting (R8M) Alternate Assist Step Desired.)
- Bed Liner, Spray-on Pickup box bed liner consisting of high pressure, chemically bonded, sprayed-on polyurea & polyurethane liner formulation. Liner is permanently bonded to the truck bed providing a water tight seal. Includes embossed Denali logo on front bed wall. The textured, non-skid surface is black in color and robotically applied to yield consistent 90 mil floor and tailgate thickness along with 50 mil box sidewall thickness. Spray-on liner covers entire bed interior surface below side rails, including tailgate, front box top rail, gage hole plugs and lower tie down loops. (Not available with (VZX) bed liner, LPO.)
- Headlight, IntelliBeam, automatic high beam on/off
- Tire, spare P265/70R17 all-season, blackwall
- Wheel, full-size spare, 17" (43.2 cm) steel
- Wheels, 20" x 9" (50.8 cm x 22.9 cm) ultra bright machined aluminum
- Window, power, rear sliding with rear defogger- Active aero shutters, front
- Bumper, front, body-color lower- Bumper, rear body-color with corner steps
- CornerStep, rear bumper- Door handles, chrome- Fog lamps, thin profile LED
- Glass, deep-tinted- Grille, Denali Chrome
- Headlamps, high-performance LED headlamps with GMC signature LED lighting
- LED Lighting, cargo box with switch on center switch bank
- Lamps, cargo area, cab mounted with switch on center switch bank
- Mirror caps, chrome
- Mirrors, outside chrome cap, heated power-adjustable, power-folding and driver-side auto-dimming with integrated turn signal indicators and puddle lamps (includes driver's side spotter mirror)
- Moldings, bodyside, chrome
- Remote Locking Tailgate (Included and only available with (AQQ) Remote Keyless Entry.)
- Tailgate and bed rail protection caps, top - Tailgate, EZ-Lift and Lower
- Taillamps, LED with signature
- Tire carrier lock keyed cylinder lock that utilizes same key as ignition and door
- Tires, P275/55R20 all-season, blackwall- Wheelhouse liners, rear

Safety

- Cruise control, steering wheel-mounted- Defogger, rear-window electric
- Door locks, power- Floor mats, color-keyed carpeted first and second row
- Remote Keyless Entry
- Steering wheel, heated, leather wrapped with audio and cruise controls
- Air conditioning, dual-zone automatic climate control
- Assist handle, front passenger and driver on A-pillars
- Console, floor mounted with cup holders, cell phone storage, power cord management, hanging file holder capability and (K4C) wireless charging
- Display, customizable driver display, 8" multi-color configurable
- Floor covering, color-keyed carpeting- Front and Rear Park Assist, Ultrasonic
- Instrumentation, 6-gauge cluster featuring speedometer, fuel level, engine temperature, tachometer, voltage and oil pressure
- Mirror, inside rearview auto-dimming
- OnStar 4G LTE and built-in Wi-Fi hotspot connects to the Internet at 4G LTE speeds; includes OnStar Data Trial for 3 months or 3GB (whichever comes first) (Visit www.onstar.com for coverage map, details and system limitations. Services vary by model. OnStar acts as a link to existing emergency service providers. Not all vehicles may transmit all crash data. Available Wi-Fi requires compatible mobile device, active OnStar service and data plan. Data plans provided by AT&T.)
- OnStar Guidance Plan for 3 months, including Automatic Crash Response, Stolen Vehicle Assistance, Roadside Assistance, Turn-by-Turn Navigation, Advanced Diagnostics and more (trial excludes Hands-Free Calling) (Fleet orders receive a 6-month trial. Visit www.onstar.com for coverage map, details and system limitations. Services vary by model. OnStar acts as a link to existing emergency service providers. Not all vehicles may transmit all crash data.)
- Pedals, power-adjustable- Power outlet, 110-volt AC- Remote vehicle starter system
- Seat, rear 60/40 folding bench (folds up), 3-passenger (includes child seat top tether anchor)
- Seating, heated and ventilated perforated leather-appointed front bucket
- Seats, front full-feature leather-appointed bucket with (KA1) heated seat cushions and seat backs. Includes 12-way power driver and front passenger seat adjusters, including 4-way power lumbar control, 2-position driver memory, adjustable head restraints, (D07) floor console and storage pockets and (K4C) wireless charging
- Steering column, manual Tilt-Wheel and telescoping
- Theft-deterrent system, unauthorized entry- Universal Home Remote
- Visors, driver and front passenger illuminated vanity mirrors
- Windows, power with driver express up and down and express down on all other windows

Mechanical

- Engine, 5.3L EcoTec3 V8, with Active Fuel Management, Direct Injection and Variable Valve Timing, includes aluminum block construction (355 hp [265 kW] @ 5600 rpm, 383 lb-ft of torque [518 Nm] @ 4100 rpm: more than 300 lb-ft of torque from 2000 to 5600

- rpm)
- Recovery hooks, front, frame-mounted, black- Air cleaner, high-capacity
- Alternator, 150 amps
- Battery, heavy-duty 720 cold-cranking amps/80 Amp-hr, maintenance-free with rundown protection and retained accessory power
- Brakes, 4-wheel disc with DURALIFE rotors, 4-wheel antilock- Capless Fuel Fill
- Cargo tie downs (4), movable upper- Cooling, auxiliary external transmission oil cooler
- Cooling, external engine oil cooler- Differential, heavy-duty locking rear
- Exhaust, aluminized stainless-steel muffler and tailpipe- Four wheel drive
- Frame, fully-boxed, hydroformed front section
- GVWR, 7200 lbs. (3266 kg) (Requires 4WD models.)- Hill Descent Control
- LPO, Polished exhaust tip (dealer installed) (Requires gas engine.) - Pickup box
- Rear axle, 3.42 ratio- Steering, Electric Power Steering (EPS) assist, rack-and-pinion
- Suspension, MagneRide Magnetic Ride Control with MagneRide brand shock absorbers
- Transfer case, active, 2-speed electronic Autotrac with rotary controls, includes neutral position for dinghy towing (Included with 4WD models only.)
- Transmission, 8-speed automatic, electronically controlled with overdrive and tow/haul mode. Includes Cruise Grade Braking and Powertrain Grade Braking
- Underbody Shield, frame-mounted shields includes front underbody shield starting behind front bumper and running to first cross-member, protecting front underbody, oil pan, differential case and transfer case (Standard on 4WD models only.)

Texas Elite Exotics

Texas Elite Exotics

View this car on our website at texaseliteexotics.com/7044966

Website: texaseliteexotics.com

Phone: 2816829826

Map: [100 Northpark Central Dr., Houston, TX 77073](#)

