

2011 Ford Ranger XL

View this car on our website at carbuffs.com/7044910/ebrochure

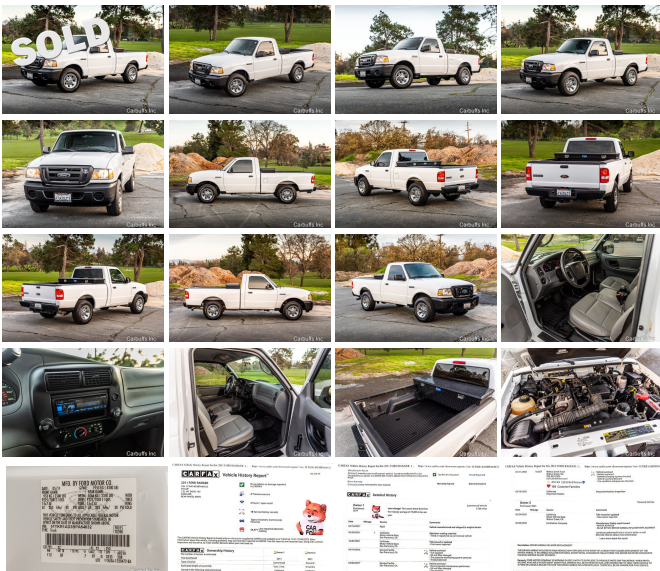


Our Price **\$0**

Specifications:

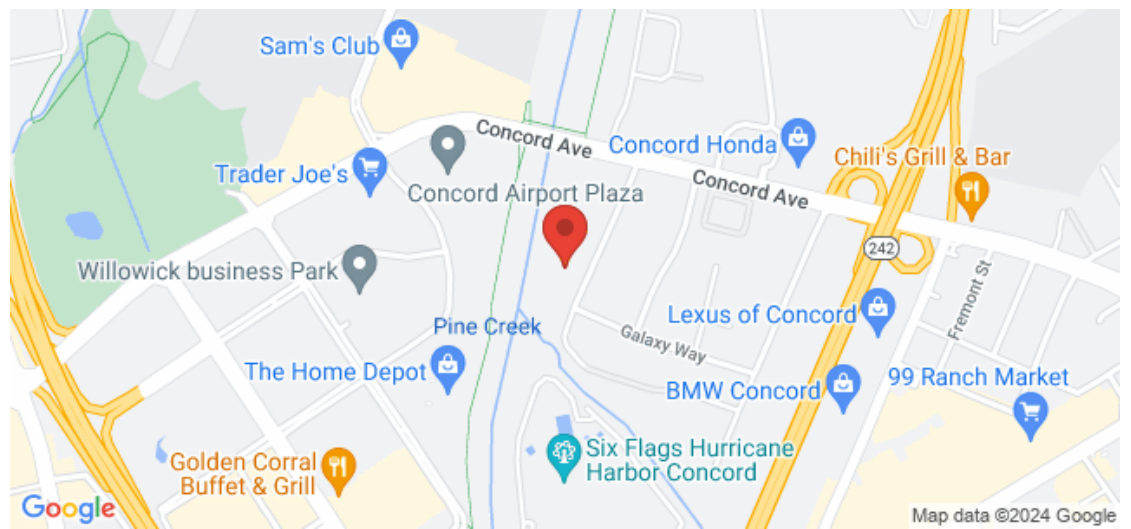
Year:	2011
VIN:	1FTKR1AD3BPA64632
Make:	Ford
Model/Trim:	Ranger XL
Condition:	Pre-Owned
Body:	Pickup Truck
Exterior:	Oxford White
Engine:	2.3L DOHC 16-VALVE I4 ENGINE
Interior:	Medium Dark Flint Vinyl
Transmission:	5-SPEED AUTOMATIC TRANSMISSION W/OD
Mileage:	25,800
Drivetrain:	Rear Wheel Drive
Economy:	City 19 / Highway 24

Rare low mile pickup! Oxford white exterior with medium dark flint vinyl interior. Excellent running 2.3L 4 cyl engine with automatic overdrive transmission. Alpine stereo with bluetooth. Cold air conditioning. Locking tool box. Bedliner. Only 25k miles. Recent tires and brakes. Serviced at Walnut Creek Ford. Clean California title in-hand. Runs and drives excellent!



2011 Ford Ranger XL
Carbuffs - (925) 671-2010 - View this car on our website at carbuffs.com/7044910/ebrochure

Our Location :



2011 Ford Ranger XL
Carbuffs - (925) 671-2010 - View this car on our website at carbuffs.com/7044910/ebrochure

Installed Options

Interior

- 12-volt aux pwr point- Air conditioning- Black rugged textured vinyl floor covering
- Black urethane 4-spoke steering wheel- Black-faced gauge cluster w/black trim rings
- Cup holders- Dome light- Driver/passenger A-pillar-mounted grab handles
- Gauges -inc: tachometer, fuel, engine temp- Glove box- Low series door trim panels
- Manual day/night rearview mirror- Medium Dark Flint, Vinyl 60/40 split bench seat
- SecuriLock anti-theft system- Smokers pkg -inc: lighter, ash tray
- Sun visors w/driver side strap

Exterior

- 15" 7-spoke silver-painted steel wheels- Bi-color tail lamps- Black H-bar grille
- Black door handles
- Black front/rear step bumper -inc: black painted face bar w/matching lower valance
- Black manual side mirrors- Front/rear stone guards- Mini spare tire
- P225/70R15 all-season BSW tires- Quick-release tailgate w/black handle
- Raised "power dome" hood- Rear window fixed glass- Solar tinted glass
- Variable-intermittent windshield wipers

Safety

- 12-volt aux pwr point- Air conditioning- Black rugged textured vinyl floor covering
- Black urethane 4-spoke steering wheel- Black-faced gauge cluster w/black trim rings
- Cup holders- Dome light- Driver/passenger A-pillar-mounted grab handles
- Gauges -inc: tachometer, fuel, engine temp- Glove box- Low series door trim panels
- Manual day/night rearview mirror- Medium Dark Flint, Vinyl 60/40 split bench seat
- SecuriLock anti-theft system- Smokers pkg -inc: lighter, ash tray
- Sun visors w/driver side strap

Mechanical

- 5-speed manual transmission w/OD- (4) cargo box tie-down hooks
- 100,000 mile tune-up interval- 100-amp alternator- 2-stage multi-leaf rear suspension
- 2.3L DOHC 16-valve I4 engine- 3.73 axle ratio (REQ: 44R Manual Transmission)
- 4300# GVWR, 1160# maximum payload- 58-amp (540 CCA) battery- 6' pickup box
- Engine block heater *STD only in AK, MN, MT, ND, SD, WI & WY states. Optional on vehicles in other states*
- Front stabilizer bar- Independent short/long A arm front suspension -inc: coil spring
- Pwr front/rear disc brakes- Pwr rack & pinion steering- Rear wheel drive- Trailer tow
- Tuned gas shock absorbers

Option Packages

Factory Installed Packages

2.3L DOHC 16-VALVE I4 ENGINE

5-SPEED AUTOMATIC TRANSMISSION W/OD

\$1,000

FRONT LICENSE PLATE BRACKET

UNDER-RAIL BEDLINER

\$275

CALIFORNIA EMISSIONS

OXFORD WHITE

MEDIUM DARK FLINT, VINYL 60/40 SPLIT BENCH SEAT

XL SERIES ORDER CODE

Option Packages Total

\$1,275

Carbuffs

carbuffs.com

(925) 671-2010

2281-A Via De Mercados

Concord, CA 94520

© 2024 AutoRevo - All rights reserved. - Powered by AutoRevo