

# 2017 Jeep Wrangler Unlimited Sport

**Prestige Sales Department 408-379-2277**

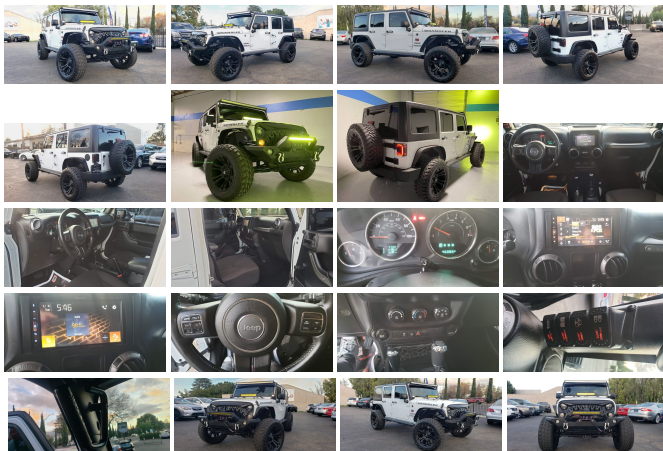
View this car on our website at [prestige-pre-owned.com/7043793/ebrochure](http://prestige-pre-owned.com/7043793/ebrochure)



Our Price **\$39,988**

## Specifications:

<b>Year:</b>	2017
<b>VIN:</b>	1C4BJWDG6HL551706
<b>Make:</b>	Jeep
<b>Stock:</b>	A3202
<b>Model/Trim:</b>	Wrangler Unlimited Sport
<b>Condition:</b>	Pre-Owned
<b>Body:</b>	SUV
<b>Exterior:</b>	Bright White Clearcoat
<b>Engine:</b>	ENGINE: 3.6L V6 24V VVT
<b>Interior:</b>	Black
<b>Transmission:</b>	TRANSMISSION: 5-SPEED AUTOMATIC (W5A580)
<b>Mileage:</b>	46,077
<b>Drivetrain:</b>	4 Wheel Drive
<b>Economy:</b>	City 16 / Highway 20



2017 JEEP WRANGLER UNLIMITED \*BIG MOAB LIFT SET UP\*---  
\*\*4X4\*\*---V-6 3.6L POWER PLANT--(\*\*WITH INCREDIBLY LOW 46K MILES\*\*)--WELL TAKEN CARE OF MILES--UNDER FULL FACTORY WARRANTY--CLEAN 2-OWNER CLEAN CARFAX RECORD/TITLE--- INCREDIBLE OFF-ROAD CAPABILITY---SAFETY INSPECTION DONE--CAR FEELS STEADY---OPTIONED VERY WELL:

**\*\*5 MONTHS OR 14K LEFT ON POWER TRAIN WARRANTY\*\***

5-SPEED AUTOMATIC TRANSMISSION  
FULL METAL DOORS WITH ROLL UP WINDOWS  
4-WHEEL DRIVE ON THE FLY  
CONNECTIVITY GROUP  
BLACK FREEDOM TOP 3-PIECE HARD TOP  
PIONEER AFTERMARKET SOUND SYSTEM RADIO 4GB HARD DRIVE AM/FM/SINGLE DISC w CD/MP3/AUX/BLUETOOTH  
POWER AMPLIFIER FOR EXCEPTIONAL SOUND  
AFTERMARKET FRONT & REAR BUMPERS  
UPDATED LED LIGHTS  
FRONT& REAR STEEL BUMPER w/ RC PRO 1200 SERIES WINCH  
TONS OF EXTRAS INCLUDING 3 LIGHT BARS  
BIG LIFT OFFROAD SUSPENSION  
VERY NICE LIFT AND NEWER TIRES & RIMS  
REAR-VIEW BACK UP CAMERA CAPABLE  
HILL DESCENT CONTROL  
3.73 FRONT/REAR AXLE RATIO  
STEERING WHEEL CONTROLS

STEERING WHEEL CONTROLS  
LED WHITE HEADLIGHTS w LED TAILLIGHTS  
ICE COLD A/C  
EASY REMOVABLE TOP  
AND MUCH MUCH MORE TO LIST/ OVER 17 SPENT IN  
AFTERMARKET

VERY ATTRACTIVE (\*\*BRIGHT WHITE CLEAR COAT EXTERIOR\*\*)  
w/-(\*\*BLACK INTERIOR\*\*)--SMOG--SAFETY INSPECTION IS  
COMPLETED-READY FOR DELIVERY----IT DRIVES GREAT---NO  
ISSUES WHATSOEVER--NOT TO BE MISSED WITH THOSE  
SUPER LOW MILES---TRULY AWESOME SUV WITH GREAT MPG &  
OFF ROADING CAPABILITY! ABSOLUTELY \*PRISTINE CONDITION\*  
ALL WAY AROUND.

FINANCING AVAILABLE TO ALL CREDIT LEVELS-LOW RATES -BAD  
CREDIT IS WELCOME-EXTENDED SERVICE CONTRACTS UP TO 7  
YEARS OR 100K MILES--ALL TRADES ARE WELCOME PAID FOR  
OR NOT--PLEASE CALL US AT 408-379-2277 FOR MORE  
INFORMATION-YOU CAN ALSO VIEW CARFAX REPORT AT  
[www.prestigepre-owned.com](http://www.prestigepre-owned.com).

At our dealership we work very hard to accurately describe our vehicles  
through text descriptions and elaborate photos. When you purchase a  
pre-owned vehicle it is not a new vehicle. Any used vehicle can have  
normal wear and blemishes. Before placing a bid please read the  
descriptions thoroughly and view all pictures.

---

2017 Jeep Wrangler Unlimited Sport


Prestige Pre-owned - 408-379-2277 - View this car on our website at [prestigepre-owned.com/7043793/ebrochure](http://prestigepre-owned.com/7043793/ebrochure)

## Vehicle History Report : as Of 01/16/2022




### Snapshot


## 2017 JEEP WRANGLER UNLIMITED SPORT


 No accidents or damage reported to CARFAX

 **2** Previous owners

 Regular oil changes

 Types of owners: Corporate, Personal

 Last owned in California

 **46,077** Last reported odometer reading



**FREE CARFAX Report**

See the full CARFAX Report for additional information

\*carfax Snapshot is a reflection of available information on the date the report was pulled. carfax is constantly being updated with new information and is subject to change at any time.

## Our Location :



2017 Jeep Wrangler Unlimited Sport

Prestige Pre-owned - 408-379-2277 - View this car on our website at [prestigepre-owned.com/7043793/ebrochure](http://prestigepre-owned.com/7043793/ebrochure)

## Installed Options

### Interior

- 2 12V DC Power Outlets- 2 Seatback Storage Pockets
- 4-Way Passenger Seat -inc: Manual Recline and Fore/Aft Movement
- 6-Way Driver Seat -inc: Manual Recline, Height Adjustment and Fore/Aft Movement
- 60-40 Folding Split-Bench Front Facing Fold Forward Seatback Rear Seat
- Analog Appearance- Carpet Floor Trim, Carpet And Rubber Mat
- Cloth Seats w/Adjustable Head Restraints- Compass
- Cruise Control w/Steering Wheel Controls- Day-Night Rearview Mirror
- Delayed Accessory Power- Driver And Passenger Visor Vanity Mirrors
- Fade-To-Off Interior Lighting- Front Center Armrest w/Storage
- Full Carpet Floor Covering -inc: Carpet Front And Rear Floor Mats
- Full Floor Console w/Locking Storage and 2 12V DC Power Outlets
- Gauges -inc: Speedometer, Odometer, Engine Coolant Temp, Tachometer, Trip Odometer and Trip Computer
- Illuminated Front Cupholder
- Instrument Panel Bin, Dashboard Storage, Driver And Passenger Door Bins
- Interior Trim -inc: Metal-Look Instrument Panel Insert, Metal-Look Door Panel Insert and Metal-Look Interior Accents
- Locking Cargo Area Concealed Storage- Locking Glove Box- Manual 1st Row Windows

- Manual Adjustable Front Head Restraints and Fixed Rear Head Restraints
- Manual Air Conditioning- Manual Rear Windows and Removable 3rd Row Windows
- Manual Tilt Steering Column- Outside Temp Gauge- Rear Cupholder
- Seats w/Cloth Back Material- Sentry Key Engine Immobilizer- Trip Computer
- Urethane Gear Shifter Material

## Exterior

- Aero-Composite Halogen Headlamps- Black Door Handles- Black Fender Flares
- Black Front Bumper w/2 Tow Hooks- Black Manual Side Mirrors w/Manual Folding
- Black Rear Bumper w/1 Tow Hook- Black Side Windows Trim- Body-Colored Grille
- Clearcoat Paint- Conventional Rear Cargo Access- Front Fog Lamps
- Full-Size Spare Tire Mounted Outside Rear- Fully Galvanized Steel Panels
- Light Tinted Glass- Manual Convertible Top w/Fixed Roll-Over Protection
- Manual Tailgate/Rear Door Lock- Removable Rear Window- Steel Spare Wheel
- Tires: P225/75R16 BSW On/Off Road- Variable Intermittent Wipers
- Wheels: 16" x 7.0" Luxury Styled Steel

## Safety

- 2 12V DC Power Outlets- 2 Seatback Storage Pockets
- 4-Way Passenger Seat -inc: Manual Recline and Fore/Aft Movement
- 6-Way Driver Seat -inc: Manual Recline, Height Adjustment and Fore/Aft Movement
- 60-40 Folding Split-Bench Front Facing Fold Forward Seatback Rear Seat
- Analog Appearance- Carpet Floor Trim, Carpet And Rubber Mat
- Cloth Seats w/Adjustable Head Restraints- Compass
- Cruise Control w/Steering Wheel Controls- Day-Night Rearview Mirror
- Delayed Accessory Power- Driver And Passenger Visor Vanity Mirrors
- Fade-To-Off Interior Lighting- Front Center Armrest w/Storage
- Full Carpet Floor Covering -inc: Carpet Front And Rear Floor Mats
- Full Floor Console w/Locking Storage and 2 12V DC Power Outlets
- Gauges -inc: Speedometer, Odometer, Engine Coolant Temp, Tachometer, Trip Odometer and Trip Computer
- Illuminated Front Cupholder
- Instrument Panel Bin, Dashboard Storage, Driver And Passenger Door Bins
- Interior Trim -inc: Metal-Look Instrument Panel Insert, Metal-Look Door Panel Insert and Metal-Look Interior Accents
- Locking Cargo Area Concealed Storage- Locking Glove Box- Manual 1st Row Windows
- Manual Adjustable Front Head Restraints and Fixed Rear Head Restraints
- Manual Air Conditioning- Manual Rear Windows and Removable 3rd Row Windows
- Manual Tilt Steering Column- Outside Temp Gauge- Rear Cupholder
- Seats w/Cloth Back Material- Sentry Key Engine Immobilizer- Trip Computer
- Urethane Gear Shifter Material

## Mechanical

- 1000# Maximum Payload- 160 Amp Alternator- 2 Skid Plates- 22.5 Gal. Fuel Tank
- 3.21 Rear Axle Ratio
- 4-Wheel Disc Brakes w/4-Wheel ABS, Front And Rear Vented Discs, Brake Assist and Hill Hold Control
- 50 State Emissions- 600CCA Maintenance-Free Battery- Auto Locking Hubs
- Brake Actuated Limited Slip Differential - Engine Oil Cooler- Engine: 3.6L V6 24V VVT
- Front And Rear Anti-Roll Bars- GVWR: 5,400 lbs- Gas-Pressurized Shock Absorbers
- Hydraulic Power-Assist Steering- Leading Link Front Suspension w/Coil Springs
- Manual Transfer Case- Normal Duty Suspension- Part-Time Four-Wheel Drive
- Single Stainless Steel Exhaust- Towing Equipment -inc: Trailer Sway Control
- Trailing Arm Rear Suspension w/Coil Springs- Transmission: 6-Speed Manual (NSG370)

## Option Packages

### Factory Installed Packages

ENGINE: 3.6L V6 24V VVT

TRANSMISSION: 5-SPEED AUTOMATIC (W5A580)

-inc: Tip Start, Hill Descent Control \$1,400

-  
ANTI-SPIN DIFFERENTIAL REAR AXLE  
\$495

-  
BLACK 3-PIECE HARD TOP  
-inc: Freedom Panel Storage Bag, Rear Window Defroster, Rear Window Wiper/Washer, Delete Sunrider Soft Top  
\$995

-  
CONNECTIVITY GROUP  
-inc: Vehicle Information Center, Remote USB Port, Uconnect Voice Command w/Bluetooth, Tire Pressure Monitoring Display  
\$770

-  
LED LIGHTING GROUP  
-inc: LED Fog Lamps, LED Reflector Headlamps  
\$595

-  
MAX TOW PACKAGE  
-inc: Class II Receiver Hitch, 3.73 Rear Axle Ratio, Trailer Tow w/4-Pin Connector Wiring  
\$845

-  
MOPAR BLACK APPEARANCE GROUP  
-inc: MOPAR Black Tubular Side Steps, Black/Chrome Screws, Fuel Filler Door  
\$795

-  
OVERSIZE SPARE TIRE CARRIER

-  
TRAILER TOW GROUP  
-inc: Class II Receiver Hitch, Trailer Tow w/4-Pin Connector Wiring  
\$495

-  
3.73 REAR AXLE RATIO  
\$695

-  
BRIGHT WHITE CLEARCOAT

-  
BLACK, CLOTH SEATS W/ADJUSTABLE HEAD RESTRAINTS

-  
Option Packages Total  
\$7,085

All interest rates are based on above average credit.

Prestige Pre-owned  
[prestigepre-owned.com](http://prestigepre-owned.com)  
408-379-2277

3293 S Winchester Blvd  
Campbell, CA 95008

© 2022 AutoRevo - All rights reserved. - Powered by AutoRevo