



2017 Chevrolet Camaro 1SS

Our Price \$36,996

View this vehicle on our website at parksdeals.com

Parks Chevrolet, Inc.

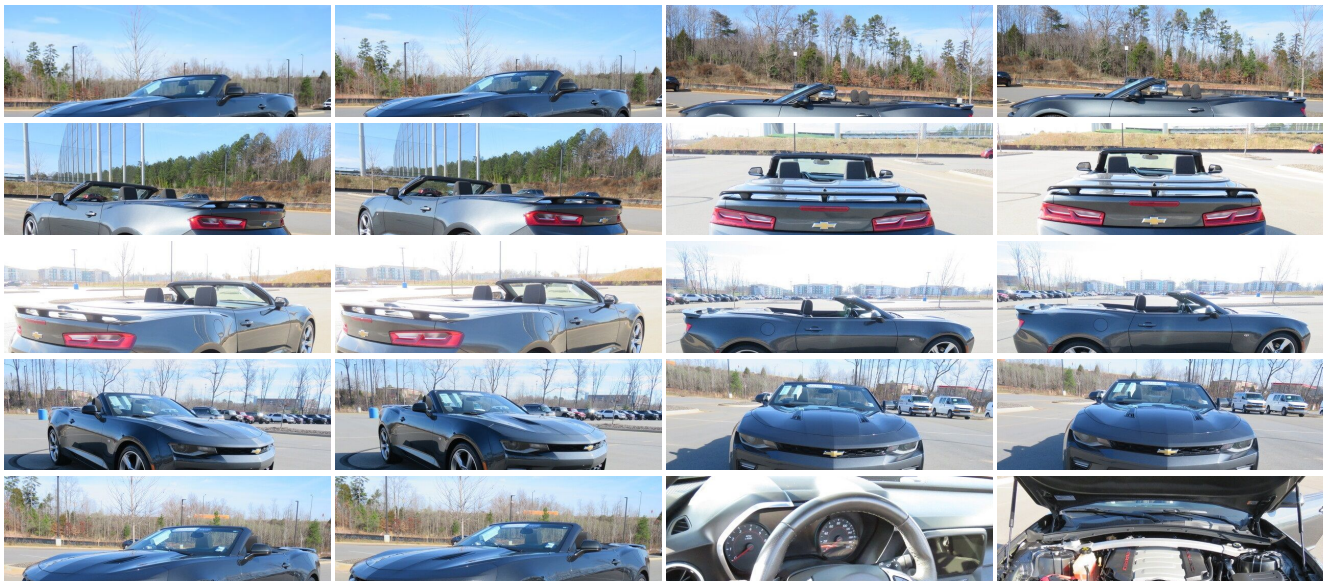
[833-825-2763](tel:833-825-2763)

615 NC-66 South, Kernersville, NC 27284

Photos

Details

Contact



Specifications:

Year:	2017
VIN:	1G1FF3D7XH0197524
Make:	Chevrolet
Stock:	7C3576
Model/Trim:	Camaro 1SS
Condition:	Pre-Owned
Body:	Convertible
Exterior:	Summit White
Engine:	ENGINE, 6.2L (376 CI) V8 DI
Interior:	Jet Black Cloth
Transmission:	TRANSMISSION, 8-SPEED AUTOMATIC
Mileage:	21,814
Drivetrain:	Rear Wheel Drive
Economy:	City 17 / Highway 27

Vehicle Description

2017 Chevrolet Camaro SS Certified.

Odometer is 20318 miles below market average! 17/27 City/Highway MPG

Call 704.288.0662 to check on the availability of this vehicle and schedule a private showing or shop 24 hours a day @ WWW.PARKSCHARLOTTE.COM. *All prices are plus tax, tag, title, and documentation. All vehicles are fully reconditioned by a Master ASE Factory Trained Certified Technician.

Awards:

* Car and Driver 10 Best Cars * 2017 KBB.com 10 Coolest Cars Under \$25,000 * 2017 KBB.com 10 Most Awarded Brands Car and Driver, January 2017.

Installed Options

Interior

- Seats, Cloth front Sport bucket - Floor mats, carpeted front
- Door locks, power programmable with lockout protection
- Keyless Open and Start includes 2 remote transmitters that enable automatic door unlock and open by touching door switch
- Defogger, rear-window, electric- Seat adjuster, driver, 8-way power
- Seat adjuster, front passenger, 6-way power- Seat, rear, fixed- Dead pedal, driver
- Steering wheel, leather-wrapped, flat-bottom
- Steering column, manual rake and telescopic- Speedometer, miles/kilometers
- Driver Information Center, enhanced, 8" diagonal multi-color re-configurable display
- Compass display- Air conditioning, single-zone automatic climate control
- Power outlet, 1 located on center console
- Windows, power with driver and passenger Express-Down/Up
- Cruise control, electronic with set and resume speed, steering wheel mounted
- Mirror, inside rearview manual day/night, frameless
- Visors, driver and front passenger vanity mirrors, covered, illuminated
- Trunk release, power- Glovebox, lockable- Cup holders, 2 front
- Lighting, front reading lamps- Shift knob, leather-wrapped

Exterior

- Wheels, 20" x 8.5" (50.8 cm x 21.6 cm) front and 20" x 9.5" (50.8 cm x 24.1 cm) rear bright 5-spoke Silver-painted aluminum
- Convertible top, power folding, remote control includes glass rear window with integral defogger
- Tires, 245/40ZR20 front and 275/35ZR20 rear, blackwall, summer-only, run-flat (Do not use summer only tires in winter conditions, as it would adversely affect vehicle safety, performance and durability. Use only GM-approved tire and wheel combinations. Unapproved combinations may change the vehicle's performance characteristics. For important tire and wheel information, see your dealer for a copy of the vehicle's owner's manual.)
- Spoiler, rear, stanchion
- Headlamps, high intensity discharge with automatic exterior lamp control
- Mirrors, outside power-adjustable, body-color
- Wipers, front variable-speed, intermittent with washers

Safety

- Seats, Cloth front Sport bucket - Floor mats, carpeted front
- Door locks, power programmable with lockout protection
- Keyless Open and Start includes 2 remote transmitters that enable automatic door unlock and open by touching door switch
- Defogger, rear-window, electric- Seat adjuster, driver, 8-way power
- Seat adjuster, front passenger, 6-way power- Seat, rear, fixed- Dead pedal, driver
- Steering wheel, leather-wrapped, flat-bottom
- Steering column, manual rake and telescopic- Speedometer, miles/kilometers
- Driver Information Center, enhanced, 8" diagonal multi-color re-configurable display
- Compass display- Air conditioning, single-zone automatic climate control
- Power outlet, 1 located on center console
- Windows, power with driver and passenger Express-Down/Up
- Cruise control, electronic with set and resume speed, steering wheel mounted
- Mirror, inside rearview manual day/night, frameless
- Visors, driver and front passenger vanity mirrors, covered, illuminated
- Trunk release, power- Glovebox, lockable- Cup holders, 2 front
- Lighting, front reading lamps- Shift knob, leather-wrapped

Mechanical

- Transmission, 6-speed manual (Includes Active Rev Matching.)
- Engine, 6.2L (376 ci) V8 DI (455 hp [339.3 kW] @ 6000 rpm, 455 lb-ft of torque [614.3 N-m] @ 4400 rpm)
- Rear axle, 3.73 ratio (Included with (MN6) 6-speed manual transmission.)
- Cooling, external engine oil cooler- Cooling system, extra capacity
- Driver Selector Mode up to 4 modes available for various driving conditions - Snow/Ice, Tour, Sport and Track (SS and ZL1 models only)
- Differential, limited slip- Battery rundown protection- Rear wheel drive
- Steering, power, variable ratio, electric
- Brakes, Brembo 4-piston front and rear, performance, 4-wheel antilock, 4-wheel disc
- Fueling system, capless- Exhaust, dual-outlet stainless-steel with bright tips

Option Packages

Factory Installed Packages

ENGINE, 6.2L (376 CI) V8 DI (455 hp [339.3 kW] @ 6000 rpm, 455 lb-ft of torque [614.3 N-m] @ 4400 rpm)	
TRANSMISSION, 8-SPEED AUTOMATIC includes transmission oil cooler and (BTV) remote vehicle starter system	\$1,495
Option Packages Total	\$1,495

Parks Chevrolet, Inc.

Parks Chevrolet, Inc.

View this car on our website at parksdeals.com/7043179

Website: parksdeals.com

Phone: [833-825-2763](tel:833-825-2763)

Map: [615 NC-66 South, Kenersville, NC 27284](#)

