



2011 Porsche 911 Carrera

Our Price \$59,900

View this vehicle on our website at siennamotors.com

Sienna Motors

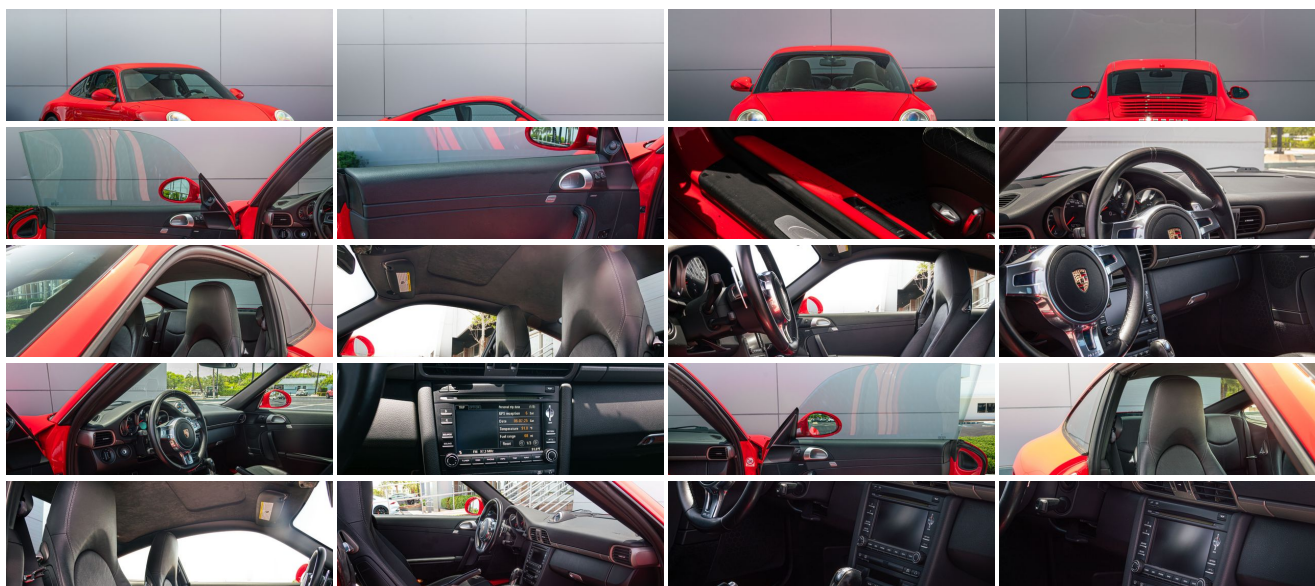
[954-784-7181](tel:954-784-7181)

2891 N Federal Hwy , Pompano Beach, Florida 33064

Photos

Details

Contact



Specifications:

Year:	2011
VIN:	WP0AA2A97BS706402
Make:	Porsche
Stock:	706402C
Model/Trim:	911 Carrera
Condition:	Pre-Owned
Body:	Coupe
Exterior:	Guards Red
Engine:	3.6L horizontally-opposed four overhead camshafts DFI 24V 6-cyl engine -inc: dry sump lubrication, oil cooler
Interior:	Black
Mileage:	52,212
Drivetrain:	Rear Wheel Drive
Economy:	City 18 / Highway 25

Vehicle Description

2011 Porsche 911 (997)

Guards Red

Options

Sport Chrono Plus (Included)

19" Turbo II Wheel (Included)

Infotainment Package (Included)

Electronic Adjustable Seats (Included)

Paint matched Trim on Gear Lever (Included)

Vehicle Highlights

PDK 3-Spoke Sports Steering Wheel w/ Paddle Shifters

Bluetooth Interface for Mobile Phone

Floor Mats in Interior Color

Universal Audio Interface

Vehicle History

Clean Title

Well Maintained

Step into the world of timeless elegance and exhilarating performance with this stunning 2011 Porsche 911 Carrera, a masterpiece of automotive engineering that promises to captivate your senses and ignite your passion for driving. With only 49,985 miles on the odometer, this iconic sports car is a rare gem, meticulously maintained to deliver the thrilling experience that Porsche is renowned for.

Dressed in an eye-catching red exterior, this 911 Carrera exudes an aura of sophistication and power, turning heads wherever it goes. The vibrant hue is not just a color; it's a statement of style and a testament to Porsche's commitment to excellence. The sleek lines and aerodynamic design of this vehicle are not only visually striking but also engineered to enhance performance, ensuring that every drive is an adventure.

Slide into the cabin, where luxury meets precision with a black interior that envelops you in comfort and style. The seats provide exceptional support, making even the longest journeys a pleasure. This is a cockpit designed for the driver, with every control and feature intuitively placed for ease of use, allowing you to focus on the pure joy of driving.

Under the hood lies the heart of this beast—a 3.6L horizontally-opposed six-cylinder engine, a marvel of modern engineering. This powerhouse features four overhead camshafts and direct fuel injection (DFI), delivering a perfect balance of power and efficiency. The dry sump lubrication and oil cooler ensure that the engine remains in peak condition, even under the most demanding driving conditions. This engine doesn't just perform; it roars to life with a symphony of sound that only a Porsche can produce, promising an exhilarating drive every time you turn the key.

Every aspect of this 911 Carrera is designed to enhance your driving experience. The precision-tuned suspension and responsive steering provide unparalleled handling, allowing you to navigate corners with confidence and grace. The braking system offers superior stopping power, ensuring safety and control at all times.

Owning a Porsche is not just about driving a car; it's about embracing a lifestyle of elegance and performance. This 2011 Porsche 911 Carrera is a testament to that legacy, offering a driving experience that is both thrilling and refined. Whether you're cruising down the highway or taking on winding roads, this vehicle delivers an unforgettable journey.

Don't miss your chance to own a piece of automotive history. This Porsche 911 Carrera is more than just a car; it's a statement of style, a testament to engineering excellence, and an invitation to experience the world in a whole new way. With its low mileage and impeccable condition, this is an opportunity that won't last long.

Seize the moment and make this extraordinary vehicle yours today. Experience the thrill of driving a Porsche and discover why the 911 Carrera is a legend in the world of sports cars. Your adventure awaits behind the wheel of this remarkable machine.

Installed Options

Interior

- 3-spoke leather-wrapped tilt/telescopic steering wheel w/audio controls
- Anti-theft system
- Immobilizer system w/in-key transponder, alarm system & radar-based interior surveillance
- Leather seat trim
- On-board trip computer -inc: average fuel consumption, speed, distance left to travel, outside temp
- Pwr front bucket seats w/adjustable lumbar
- Standard pwr bucket seats -inc: driver & front passenger seat pwr backrest, driver & front passenger seat manual height, driver & front passenger seat manual fore/aft
- 2 + 2 Seating- Automatic climate control -inc: active carbon filter- Aux pwr outlet
- Cruise control- Dual front cup holders- Heated rear screen- HomeLink system
- Illuminated visor vanity mirrors- Keyless entry -inc: remote trunk release
- Leather-wrapped gear lever & handbrake
- Pwr windows -inc: auto up/down, anti-jamming feature- Split-folding rear bench seat

Exterior

- 18" x 8" front/18" x 10.5" rear standard Carrera IV aluminum wheels -inc: P235/40ZR18 front tires, P265/40ZR18 rear tires
- Automatic extending rear spoiler- Pwr folding heated mirrors w/memory
- Auto off headlights
- Bi-xenon headlights -inc: auto leveling, washers, welcome home function
- Front air dam intakes in black- LED lights -inc: tail lights, brake lights
- Pwr tilt/slide sunroof- Rain-sensing intermittent windshield wipers w/heated washers

Safety

- 3-spoke leather-wrapped tilt/telescopic steering wheel w/audio controls
- Anti-theft system
- Immobilizer system w/in-key transponder, alarm system & radar-based interior surveillance
- Leather seat trim
- On-board trip computer -inc: average fuel consumption, speed, distance left to travel, outside temp
- Pwr front bucket seats w/adjustable lumbar
- Standard pwr bucket seats -inc: driver & front passenger seat pwr backrest, driver & front passenger seat manual height, driver & front passenger seat manual fore/aft
- 2 + 2 Seating- Automatic climate control -inc: active carbon filter- Aux pwr outlet
- Cruise control- Dual front cup holders- Heated rear screen- HomeLink system
- Illuminated visor vanity mirrors- Keyless entry -inc: remote trunk release
- Leather-wrapped gear lever & handbrake
- Pwr windows -inc: auto up/down, anti-jamming feature- Split-folding rear bench seat

Mechanical

- 6-speed manual transmission -inc: dual-mass fly-wheel & self-adjusting clutch
- (2) single-tube tailpipes in brushed stainless steel
- 3.6L horizontally-opposed four overhead camshafts DFI 24V 6-cyl engine -inc: dry sump lubrication, oil cooler
- Black brake calipers- Drive-off assistant- Front/rear stabilizer bars
- Full underbody paneling- LSA multi-link rear suspension- McPherson front suspension
- Pwr 4-wheel vented disc brakes -inc: 4-piston front/rear monobloc brake calipers
- Pwr rack & pinion steering- Rear wheel drive
- Vario-cam plus variable valve timing system

While great effort is made to ensure the accuracy of the information on our website, errors do occur. All specifications, prices and equipment are subject to change without notice to correct error or omissions. Prices and payments do not include sales tax or other taxes, tag, title, registration fees, government fees, tag agency/electronic filing fee and \$995 dealer service fee are not included in quoted price.

Sienna Motors

Sienna Motors

View this car on our website at siennamotors.com/7042487

Website: siennamotors.com

Phone: [954-784-7181](tel:954-784-7181)

Map: [2891 N Federal Hwy, Pompano Beach, Florida 33064](#)

