

2020 Jeep Wrangler Unlimited Willys

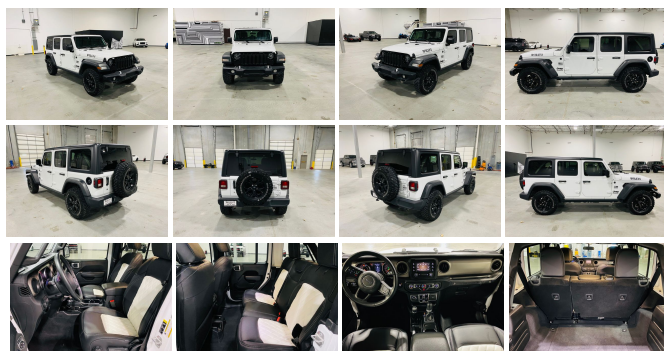
View this car on our website at texaseliteexotics.com/7040925/ebrochure



Our Price **\$37,995**

Specifications:

Year:	2020
VIN:	1C4HJXDN0LW207682
Make:	Jeep
Model/Trim:	Wrangler Unlimited Willys
Condition:	Pre-Owned
Body:	SUV
Exterior:	Bright White Clearcoat
Engine:	ENGINE: 2.0L I4 DOHC DI TURBO W/ESS
Interior:	Black Leather
Transmission:	TRANSMISSION: 8-SPEED AUTOMATIC (850RE)
Mileage:	9,107
Drivetrain:	4 Wheel Drive
Economy:	City 17 / Highway 22

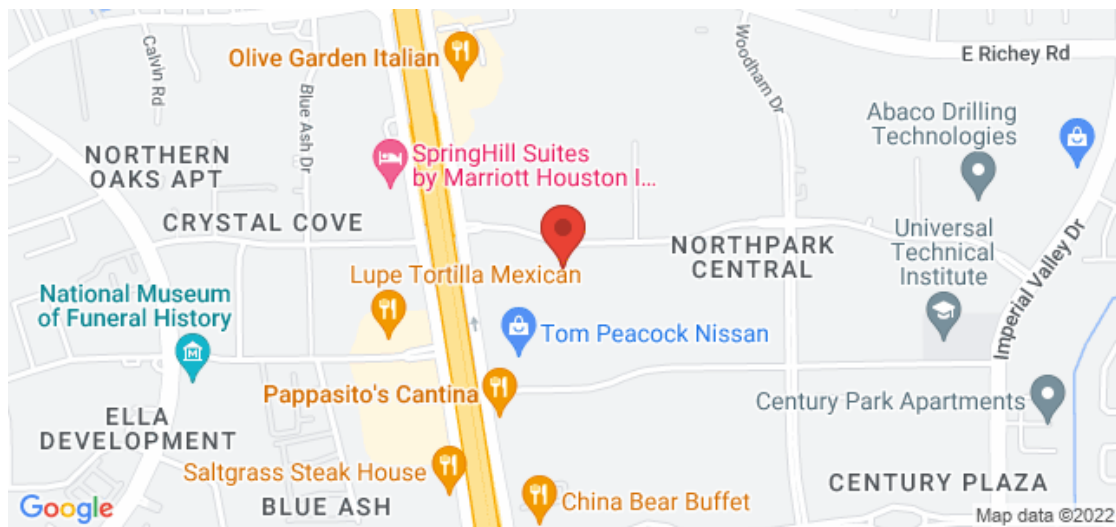


Insurance Theft Recovery! Not Wrecked or Damaged! Save THOUSANDS! Still a Clear Texas Title. 2020 Jeep Wrangler Unlimited Willy's 4X4 with Automatic Transmission and 3 Piece Hard Top. Brand New Two-Tone Black and White Leather Diamond Stitch Interior.

2020 Jeep Wrangler Unlimited Willys

Texas Elite Exotics - 2816829826 - View this car on our website at texaseliteexotics.com/7040925/ebrochure

Our Location :



2020 Jeep Wrangler Unlimited Willys

Texas Elite Exotics - 2816829826 - View this car on our website at texaseliteexotics.com/7040925/ebrochure

Installed Options

Interior

- 2 12V DC Power Outlets- 2 Seatback Storage Pockets
- 4-Way Passenger Seat -inc: Manual Recline and Fore/Aft Movement
- 6-Way Driver Seat -inc: Manual Recline, Height Adjustment, Fore/Aft Movement and Manual Lumbar Support
- 60-40 Folding Split-Bench Front Facing Fold Forward Seatback Cloth Rear Seat
- Analog Appearance- Cargo Space Lights- Carpet Floor Trim, Carpet And Rubber Mat
- Cloth Low-Back Bucket Seats- Compass- Cruise Control w/Steering Wheel Controls
- Day-Night Rearview Mirror- Systems Monitor- Trip Computer
- Urethane Gear Shifter Material- Vanity w/Driver And Passenger Auxiliary Mirror
- Delayed Accessory Power- Fade-To-Off Interior Lighting- Front And Rear Map Lights
- Front Center Armrest w/Storage
- Front Seats w/Cloth Back Material and Manual Driver Lumbar - Full Carpet Floor Covering
- Full Floor Console w/Locking Storage and 2 12V DC Power Outlets
- Gauges -inc: Speedometer, Odometer, Engine Coolant Temp, Tachometer, Engine Hour Meter, Trip Odometer and Trip Computer
- HVAC -inc: Console Ducts- Illuminated Front Cupholder- Illuminated Rear Cupholder
- Instrument Panel Bin, Dashboard Storage, Driver / Passenger And Rear Door Bins
- Integrated Voice Command w/Bluetooth
- Interior Trim -inc: Metal-Look Instrument Panel Insert and Metal-Look Console Insert
- Locking Cargo Area Concealed Storage- Locking Glove Box
- Manual Adjustable Front Head Restraints and Foldable Rear Head Restraints
- Manual Air Conditioning- Manual Tilt/Telescoping Steering Column
- Outside Temp Gauge- Proximity Key For Push Button Start Only
- Redundant Digital Speedometer- Removable 3rd Row Windows
- Sentry Key Engine Immobilizer

Exterior

- Wheels: 17" x 7.5" Moab Black Aluminum - Variable Intermittent Wipers

- Tires: LT255/75R17C- Removable Rear Window- Non-Lock Fuel Cap w/o Discriminator
- Manual Convertible Top w/Fixed Roll-Over Protection
- LED Headlamp & Fog Lamp Group -inc: Front LED Fog Lamps, LED Reflector Headlamps
- Galvanized Steel/Aluminum/Magnesium Panels
- Full-Size Spare Tire Mounted Outside Rear- Deep Tint Sunscreen Windows
- Conventional Rear Cargo Access- Clearcoat Paint Black Side Windows Trim
- Black Rear Bumper w/1 Tow Hook- Black Front Bumper w/2 Tow Hooks
- Black Fender Flares- Black Door Handles- Aero-Composite Headlamps w/Delay-Off
- 110 MPH Vehicle Max Speed Calibration

Safety

- 2 12V DC Power Outlets- 2 Seatback Storage Pockets
- 4-Way Passenger Seat -inc: Manual Recline and Fore/Aft Movement
- 6-Way Driver Seat -inc: Manual Recline, Height Adjustment, Fore/Aft Movement and Manual Lumbar Support
- 60-40 Folding Split-Bench Front Facing Fold Forward Seatback Cloth Rear Seat
- Analog Appearance- Cargo Space Lights- Carpet Floor Trim, Carpet And Rubber Mat
- Cloth Low-Back Bucket Seats- Compass- Cruise Control w/Steering Wheel Controls
- Day-Night Rearview Mirror- Systems Monitor- Trip Computer
- Urethane Gear Shifter Material- Vanity w/Driver And Passenger Auxiliary Mirror
- Delayed Accessory Power- Fade-To-Off Interior Lighting- Front And Rear Map Lights
- Front Center Armrest w/Storage
- Front Seats w/Cloth Back Material and Manual Driver Lumbar - Full Carpet Floor Covering
- Full Floor Console w/Locking Storage and 2 12V DC Power Outlets
- Gauges -inc: Speedometer, Odometer, Engine Coolant Temp, Tachometer, Engine Hour Meter, Trip Odometer and Trip Computer
- HVAC -inc: Console Ducts- Illuminated Front Cupholder- Illuminated Rear Cupholder
- Instrument Panel Bin, Dashboard Storage, Driver / Passenger And Rear Door Bins
- Integrated Voice Command w/Bluetooth
- Interior Trim -inc: Metal-Look Instrument Panel Insert and Metal-Look Console Insert
- Locking Cargo Area Concealed Storage- Locking Glove Box
- Manual Adjustable Front Head Restraints and Foldable Rear Head Restraints
- Manual Air Conditioning- Manual Tilt/Telescoping Steering Column
- Outside Temp Gauge- Proximity Key For Push Button Start Only
- Redundant Digital Speedometer- Removable 3rd Row Windows
- Sentry Key Engine Immobilizer

Mechanical

- 1233# Maximum Payload- 180 Amp Alternator- 21.5 Gal. Fuel Tank
- 3.45 Rear Axle Ratio- 50 State Emissions
- 650CCA Maintenance-Free Battery w/Run Down Protection- Auto Locking Hubs
- Aux Battery- Brakes w/Brake Assist and Hill Hold Control
- Electro-Hydraulic Power Assist Steering- Engine Oil Cooler
- Engine: 3.6L V6 24V VVT UPG I w/ESS - Front And Rear Anti-Roll Bars
- GVWR: 5,300 lbs- Gas-Pressurized Shock Absorbers
- Leading Link Front Suspension w/Coil Springs- Manual Transfer Case
- Normal Duty Suspension- Part-Time Four-Wheel Drive- Single Stainless Steel Exhaust
- Stop-Start Dual Battery System- Towing Equipment -inc: Trailer Sway Control
- Trailing Arm Rear Suspension w/Coil Springs- Transmission: 6-Speed Manual

Option Packages

Factory Installed Packages

ENGINE: 2.0L I4 DOHC DI TURBO W/ESS

TRANSMISSION: 8-SPEED AUTOMATIC (850RE)

-inc: TIP Start, Dana M200 Rear Axle, Hill Descent Control **\$2,750**

BLACK 3-PIECE HARD TOP

-inc: Freedom Panel Storage Bag, Rear Window Defroster, Rear Window Wiper/Washer, No Soft Top **\$1,295**

3.45 REAR AXLE RATIO

QUICK ORDER PACKAGE 22W WILLYS

-inc: Engine: 2.0L I4 DOHC DI Turbo w/ESS, Transmission: 8-Speed Automatic (850RE), Speed Sensitive Power Locks, Leather Wrapped Steering Wheel, 4-Wheel Drive Swing Gate Decal, Black Grille, MOPAR All-Weather Floor Mats, Front 1-Touch Down Power Windows, Anti-Spin Differential Rear Axle, Bridgestone Brand Tires, Wrangler Decal, Security Alarm, Willys, Anti-Lock 4-Wheel Disc HD Brakes, Automatic Headlamps, Black Trail Rated Badge, Willys Hood Decal, Rock Protection Sill Rails, 97 MPH Vehicle Max Speed Calibration, Power Heated Mirrors, Matte Black Jeep Badge, Remote Keyless Entry, Sun Visors w/Illuminated Vanity Mirrors, Front LED Fog Lamps, LED Reflector Headlamps

\$5,695

BRIGHT WHITE CLEARCOAT

TIRES: LT255/75R17C

Option Packages Total
\$9,740

Texas Elite Exotics
texaseliteexotics.com
2816829826
100 Northpark Central Dr.
Houston, TX 77073

© 2022 AutoRevo - All rights reserved. - Powered by AutoRevo