



2020 Ford Edge SEL

Our Price \$29,199

View this vehicle on our website at parksdeals.com

Parks Chevrolet, Inc.

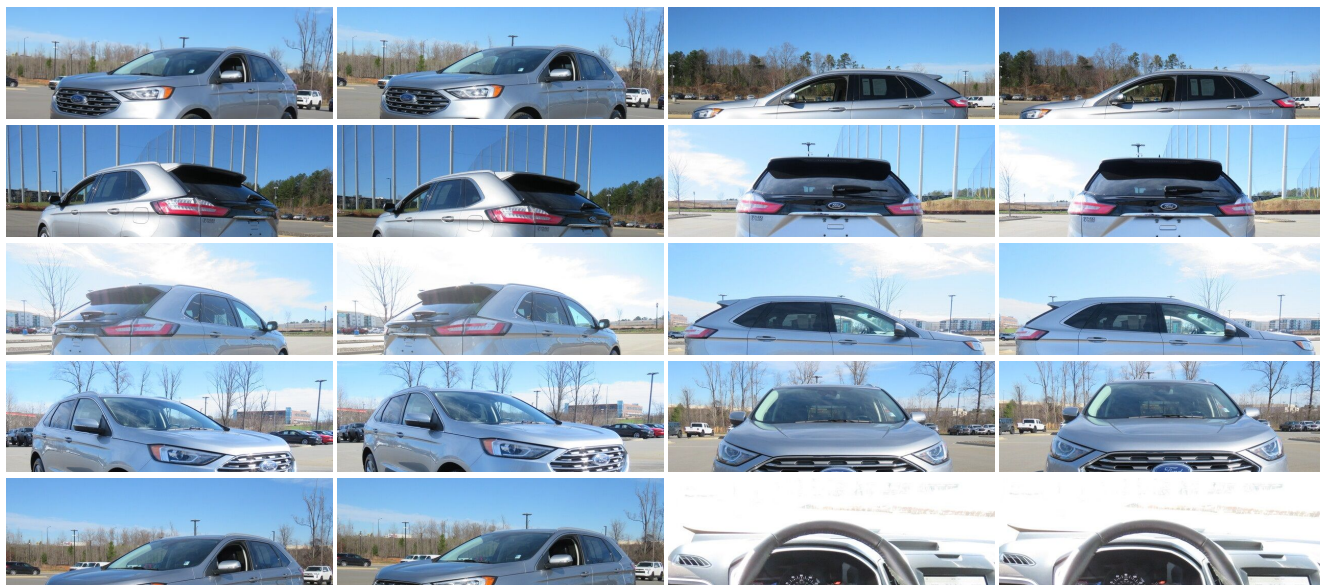
[833-825-2763](tel:833-825-2763)

615 NC-66 South, Kernersville, NC 27284

Photos

Details

Contact



Specifications:

Year:	2020
VIN:	2FMPK3J96LBB66366
Make:	Ford
Stock:	126458B
Model/Trim:	Edge SEL
Condition:	Pre-Owned
Body:	SUV
Exterior:	Silver
Engine:	ENGINE: TWIN-SCROLL 2.0L ECOBOOST
Interior:	Ebony Leather
Mileage:	23,683
Drivetrain:	Front Wheel Drive
Economy:	City 21 / Highway 29

Vehicle Description

2020 Ford Edge SEL

110V/150W AC Power Outlet, 9 Speakers, ActiveX Seating Material Heated Bucket Seats, Adaptive Cruise Control w/Stop & Go, AppLink/Apple CarPlay and Android Auto, Auto High-beam Headlights, Automatic temperature control, Convenience Package, Equipment Group 201A, Evasive Steering Assist, Foot-Activated Hands-Free Liftgate, Ford Co-Pilot360 Assist+, Four wheel independent suspension, Front dual zone A/C, Front fog lights, Fully automatic headlights, Heated front seats, Lane Centering, Perimeter Alarm, Premium 9 Speaker Audio System, Rain sensing wipers, Rear window defroster, Remote Start System, SiriusXM Traffic & Travel Link, SYNC 3 Communications & Entertainment System, Universal Garage Door Opener (UGDO), Voice-Activated Touchscreen Navigation System, Wireless Charging Pad. CARFAX One-Owner.

Odometer is 18735 miles below market average! 21/29 City/Highway MPG

Call 704.288.0662 to check on the availability of this vehicle and schedule a private showing or shop 24 hours a day @ WWW.PARKSCHARLOTTE.COM. *All prices are plus tax, tag, title, and documentation. All vehicles are fully reconditioned by a Master ASE Factory Trained Certified Technician.

Installed Options

Interior

- Gauges -inc: Speedometer, Odometer, Engine Coolant Temp, Tachometer, Trip Odometer and Trip Computer
- Power Rear Windows and Fixed 3rd Row Windows
- Proximity Key For Doors And Push Button Start
- Remote Keyless Entry w/Integrated Key Transmitter, Illuminated Entry, Illuminated Ignition Switch and Panic Button
- FordPass Connect -inc: 4G LTE Wi-Fi hotspot that connects up to 10 devices (includes a complimentary trial subscription of 3 months or 3 gigabytes - whichever comes first, Wireless service plan required after trial subscription ends, Visit www.att.com/ford to start complimentary trail and sign up for a wireless service plan), Remote start w/specific time scheduling, lock and unlock, locate parked vehicle and check vehicle status (service for 1 year from the vehicle sale date as recorded by the dealer)
- Cruise Control w/Steering Wheel Controls
- ActiveX Seating Material Heated Bucket Seats -inc: 10-way power driver's seat (fore/aft, up/down, recline, tilt, lumbar) and 6-way power passenger seat (fore/aft, up/down, tilt w/manual recline)
- FOB Controls -inc: Windows
- Power 1st Row Windows w/Driver And Passenger 1-Touch Up/Down
- Power Door Locks w/Autolock Feature- Trip Computer- 8-Way Driver Seat
- 8-Way Passenger Seat -inc: Manual Recline
- 60-40 Folding Split-Bench Front Facing Manual Reclining Fold Forward Seatback ActiveX Leatherette Rear Seat
- Manual Tilt/Telescoping Steering Column- Leather/Metal-Look Steering Wheel
- Front Cupholder- Rear Cupholder- Compass- Keypad
- Dual Zone Front Automatic Air Conditioning
- HVAC -inc: Underseat Ducts and Console Ducts- Locking Glove Box- Driver Foot Rest
- Interior Trim -inc: Metal-Look Instrument Panel Insert, Metal-Look Door Panel Insert, Metal-Look/Piano Black Console Insert and Chrome/Metal-Look Interior Accents
- Full Cloth Headliner- Vinyl Door Trim Insert

Option Packages

Factory Installed Packages

ENGINE: TWIN-SCROLL 2.0L ECOBOOST
-inc: auto start-stop technology

- Driver And Passenger Visor Vanity Mirrors w/Driver And Passenger Illumination
- Day-Night Auto-Dimming Rearview Mirror
- Full Floor Console w/Covered Storage, Mini Overhead Console w/Storage and 4 12V DC Power Outlets
- Front And Rear Map Lights- Fade-To-Off Interior Lighting
- Full Carpet Floor Covering -inc: Carpet Front And Rear Floor Mats - Carpet Floor Trim
- Cargo Area Concealed Storage- Cargo Space Lights
- Instrument Panel Bin, Covered Dashboard Storage, Driver / Passenger And Rear Door Bins
- Delayed Accessory Power- Systems Monitor- Outside Temp Gauge
- Digital/Analog Appearance
- Manual w/Tilt Front Head Restraints and Manual Adjustable Rear Head Restraints
- Front Center Armrest w/Storage and Rear Center Armrest - 2 Seatback Storage Pockets
- Seats w/Leatherette Back Material
- Securilock Anti-Theft Ignition (pats) Engine Immobilizer- 4 12V DC Power Outlets
- Air Filtration

Exterior

- Wheels: 18" Sparkle Silver-Painted Aluminum -inc: Split-spoke
- Tailgate/Rear Door Lock Included w/Power Door Locks
- Autolamp Auto On/Off Projector Beam Led Low/High Beam Auto High-Beam Daytime Running Lights Preference Setting Headlamps w/Delay-Off
- Tires: 245/60R18 AS BSW- Steel Spare Wheel
- Compact Spare Tire Mounted Inside Under Cargo- Clearcoat Paint
- Body-Colored Front Bumper w/Black Rub Strip/Fascia Accent
- Body-Colored Rear Bumper w/Black Rub Strip/Fascia Accent- Black Bodyside Cladding
- Body-Colored Door Handles
- Chrome Side Windows Trim and Black Front Windshield Trim
- Body-Colored Power Heated Side Mirrors w/Manual Folding and Turn Signal Indicator
- Fixed Rear Window w/Fixed Interval Wiper and Defroster - Deep Tinted Glass
- Speed Sensitive Rain Detecting Variable Intermittent Wipers
- Fully Galvanized Steel Panels- Lip Spoiler- Metal-Look Grille w/Chrome Surround
- Liftgate Rear Cargo Access- Roof Rack Rails Only- LED Brakelights
- Headlights-Automatic Highbeams- Front Fog Lamps- Perimeter/Approach Lights

Safety

- Gauges -inc: Speedometer, Odometer, Engine Coolant Temp, Tachometer, Trip Odometer and Trip Computer
- Power Rear Windows and Fixed 3rd Row Windows
- Proximity Key For Doors And Push Button Start
- Remote Keyless Entry w/Integrated Key Transmitter, Illuminated Entry, Illuminated Ignition Switch and Panic Button
- FordPass Connect -inc: 4G LTE Wi-Fi hotspot that connects up to 10 devices (includes a complimentary trial subscription of 3 months or 3 gigabytes - whichever comes first, Wireless service plan required after trial subscription ends, Visit www.att.com/ford to start complimentary trail and sign up for a wireless service plan), Remote start w/specific time scheduling, lock and unlock, locate parked vehicle and check vehicle status (service for 1 year from the vehicle sale date as recorded by the dealer)
- Cruise Control w/Steering Wheel Controls
- ActiveX Seating Material Heated Bucket Seats -inc: 10-way power driver's seat (fore/aft, up/down, recline, tilt, lumbar) and 6-way power passenger seat (fore/aft, up/down, tilt w/manual recline)
- FOB Controls -inc: Windows
- Power 1st Row Windows w/Driver And Passenger 1-Touch Up/Down
- Power Door Locks w/Autolock Feature- Trip Computer- 8-Way Driver Seat
- 8-Way Passenger Seat -inc: Manual Recline
- 60-40 Folding Split-Bench Front Facing Manual Reclining Fold Forward Seatback ActiveX Leatherette Rear Seat
- Manual Tilt/Telescoping Steering Column- Leather/Metal-Look Steering Wheel
- Front Cupholder- Rear Cupholder- Compass- Keypad
- Dual Zone Front Automatic Air Conditioning
- HVAC -inc: Underseat Ducts and Console Ducts - Locking Glove Box- Driver Foot Rest
- Interior Trim -inc: Metal-Look Instrument Panel Insert, Metal-Look Door Panel Insert, Metal-Look/Piano Black Console Insert and Chrome/Metal-Look Interior Accents
- Full Cloth Headliner- Vinyl Door Trim Insert
- Driver And Passenger Visor Vanity Mirrors w/Driver And Passenger Illumination
- Day-Night Auto-Dimming Rearview Mirror
- Full Floor Console w/Covered Storage, Mini Overhead Console w/Storage and 4 12V DC Power Outlets
- Front And Rear Map Lights- Fade-To-Off Interior Lighting
- Full Carpet Floor Covering -inc: Carpet Front And Rear Floor Mats - Carpet Floor Trim
- Cargo Area Concealed Storage- Cargo Space Lights
- Instrument Panel Bin, Covered Dashboard Storage, Driver / Passenger And Rear Door Bins

01113

- Delayed Accessory Power- Systems Monitor- Outside Temp Gauge
- Digital/Analog Appearance
- Manual w/Tilt Front Head Restraints and Manual Adjustable Rear Head Restraints
- Front Center Armrest w/Storage and Rear Center Armrest- 2 Seatback Storage Pockets
- Seats w/Leatherette Back Material
- Securilock Anti-Theft Ignition (pats) Engine Immobilizer- 4 12V DC Power Outlets
- Air Filtration

Mechanical

- Transmission: 8-Speed Automatic -inc: Active Transmission Warm-Up
- Engine: Twin-Scroll 2.0L EcoBoost -inc: auto start-stop technology - 3.80 Axle Ratio
- GVWR: TBD- 50-State Emissions System- Front-Wheel Drive
- 70-Amp/Hr 760CCA Maintenance-Free Battery w/Run Down Protection
- Gas-Pressurized Shock Absorbers- Front And Rear Anti-Roll Bars
- Electric Power-Assist Steering- 18.4 Gal. Fuel Tank
- Quasi-Dual Stainless Steel Exhaust w/Polished Tailpipe Finisher
- Strut Front Suspension w/Coil Springs- Multi-Link Rear Suspension w/Coil Springs
- 4-Wheel Disc Brakes w/4-Wheel ABS, Front Vented Discs, Brake Assist, Hill Hold Control and Electric Parking Brake
- Brake Actuated Limited Slip Differential

Parks Chevrolet, Inc.

Parks Chevrolet, Inc.

View this car on our website at parksdeals.com/7040750

Website: parksdeals.com

Phone: 833-825-2763

Map: [615 NC-66 South, Kernersville, NC 27284](#)



