

2021 Jeep Gladiator Sport 4X4 DIESEL,DUPONT KEVLAR,LIFTED,BUMPERS,NAV

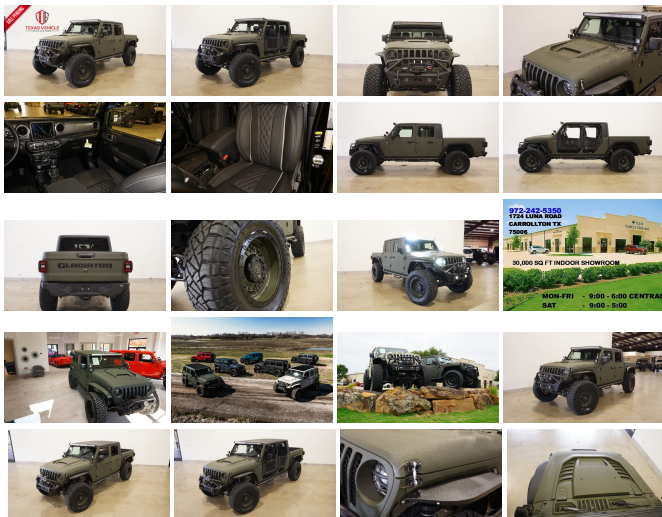
View this car on our website at tveauto.com/7040678/ebrochure



Our Price **\$89,900**

Specifications:

Year:	2021
VIN:	1C6JJTAM8ML594627
Make:	Jeep
Stock:	594627
Model/Trim:	Gladiator Sport 4X4 DIESEL,DUPONT KEVLAR,LIFTED,BUMPERS,NAV
Condition:	Pre-Owned
Body:	Pickup Truck
Exterior:	Green
Engine:	ENGINE: 3.0L V6 TURBO DIESEL W/ESS G3
Interior:	Black Leather
Transmission:	TRANSMISSION: 8-SPEED AUTOMATIC (8HP75)
Mileage:	71
Drivetrain:	4 Wheel Drive
Economy:	City 16 / Highway 22



NATION WIDE FINANCING

SUBMIT CREDIT APP WWW.TVEAUTO.COM

OR CALL 972-242-5350

"TANK GREEN EDITION"

CUSTOM BUILT **KEVLAR** 2021 JEEP
GLADIATOR SPORT 4X4 WITH 26S
PACKAGE

UPGRADES INCLUDE:

- * TANK GREEN KEVLAR COATING WITH BLACK ACCENTS
- * 3.0L V6 TURBO DIESEL ENGINE WITH START STOP
- * CUSTOM ALEA BLACK LEATHER WITH TAN STITCHING
- * HEATED FRONT SEATS
- * FACTORY REMOTE START
- * POPULAR EQUIPMENT PACKAGE
- * ACTIVE SAFETY GROUP
- * FACTORY 8.4 INCH TOUCH SCREEN NAVIGATION WITH HD AM/FM/SIRIUS STEREO & ALPINE PREMIUM AUDIO SYSTEM
- * FACTORY BACK-UP CAMERA
- * U-CONNECT
- * 4 BODY ARMOR TRAIL DOORS & RECON MIRRORS
- * FAB FOURS STUBBY FRONT BUMPER WITH LED FOGLIGHTS
- * FRONT D-RINGS & ISOLATORS (TANK GREEN)
- * SMITTYBILT NEW GEN II "X20" 10,000 LB WATERPROOF AND WIRELESS CONTROL WINCH WITH SYNTHETIC ROPE
- * FACTOR 55 PROLINK (BLACK)
- * FACTORY LED HEADLIGHTS
- * RUGGED RIDGE BLACK HEADLIGHT GUARDS
- * NEW JT CUSTOM VENTED HOOD
- * DRAKE OFF ROAD HOOD LATCHES
- * DV8 OFF ROAD JT SLIM STEEL FENDER FLARES
- * DV8 OFF ROAD FRONT & REAR INNER

FENDERS

- * RUBICON EXPRESS 3.5" SUSPENSION LIFT KIT WITH TERAFLX FALCON SHOCKS
- * TERAFLX FALCON STABILIZER KIT
- * MOPAR AUXILIARY SWITCH BANK KIT
- * 50" LED LIGHT BAR AND 4 RIGID INDUSTRIES DUALY D2 LED PILLAR LIGHTS
- * N-FAB BLACK TUBULAR STEPS
- * SPRAY IN BEDLINER
- * DV8 OFF ROAD REAR BUMPER WITH REAR PARK DISTANCE SENSORS
- * ALL WEATHER FLOOR MATS
- * TAZER JL PROGRAMMER WITH SPEEDOMETER CALIBRATION
- * 20" BLACK RHINO OD GREEN "ABRAMS" WHEELS
- * BRAND NEW NITTO RIDGE GRAPPLER 37X13.50R/20 TIRES






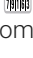
WE BUILD EVERY JEEP WITH PRIDE! DO NOT HESITATE TO CALL US WITH THIS JEEP BUILD. WE CAN MAKE CHANGES TO THIS JEEP BUILD OR CUSTOM BUILD ANY JEEP TO YOUR PREFERENCE. GIVE US A CALL @ 972-242-5350 OR STOP BY FOR A TEST DRIVE. 1724 LUNA RD IN CARROLLTON - 2 MILES NORTH OF 635.

Vehicle History Report : as Of 01/19/2022

CARFAX

Snapshot

2021 JEEP GLADIATOR SPORT

- 
No accidents or damage reported to CARFAX
- 
CARFAX 1-Owner vehicle
- 
Well maintained vehicle
- 
Commercial vehicle
- 
Last owned in Montana
- 
7 Last reported odometer reading



FREE CARFAX Report

See the full CARFAX Report for additional information

*carfax Snapshot is a reflection of available information on the date the report was pulled. carfax is constantly being updated with new information and is subject to change at any time.

Our Location :



2021 Jeep Gladiator Sport 4X4 DIESEL,DUPONT KEVLAR,LIFTED,BUMPERS,NAV

Texas Vehicle Exchange - 972-242-5350 - View this car on our website at veauto.com/7040678/ebrochure

Installed Options

Interior

- 110 mph Vehicle Max Speed Calibration- 2 12V DC Power Outlets
- 2 Seatback Storage Pockets
- 4-Way Passenger Seat -inc: Manual Recline and Fore/Aft Movement
- 6-Way Driver Seat -inc: Manual Recline, Height Adjustment, Fore/Aft Movement and Manual Lumbar Support
- 60-40 Folding Split-Bench Front Facing Fold Forward Seatback Cloth Rear Seat
- Air Filtration- Analog Appearance- Cloth Low-Back Bucket Seats- Compass
- Cruise Control w/Steering Wheel Controls- Day-Night Rearview Mirror
- Delayed Accessory Power- Fade-To-Off Interior Lighting- Front And Rear Map Lights
- Front Center Armrest w/Storage
- Front Seats w/Cloth Back Material and Manual Driver Lumbar
- Full Carpet Floor Covering -inc: Carpet Front And Rear Floor Mats
- Full Floor Console w/Locking Storage and 2 12V DC Power Outlets
- Gauges -inc: Speedometer, Odometer, Engine Coolant Temp, Tachometer, Engine Hour Meter, Trip Odometer and Trip Computer
- HVAC -inc: Console Ducts- Illuminated Front Cupholder- Illuminated Rear Cupholder
- Instrument Panel Bin, Dashboard Storage, Driver / Passenger And Rear Door Bins
- Interior Trim -inc: Metal-Look Instrument Panel Insert and Metal-Look Console Insert

- Locking Glove Box
- Manual Adjustable Front Head Restraints and Foldable Rear Head Restraints
- Manual Air Conditioning- Manual Tilt/Telescoping Steering Column
- Outside Temp Gauge- Proximity Key For Push Button Start Only
- Redundant Digital Speedometer- Sentry Key Engine Immobilizer- Systems Monitor
- Trip Computer- Urethane Gear Shifter Material
- Vanity w/Driver And Passenger Auxiliary Mirror

Exterior

- Aero-Composite Halogen Headlamps w/Delay-Off- Black Door Handles
- Black Front Bumper w/2 Tow Hooks- Black Rear Bumper w/1 Tow Hook
- Black Side Windows Trim- Body-Colored Grille- Clearcoat Paint
- Deep Tint Sunscreen Windows- Front Fog Lamps
- Full-Size Spare Tire Stored Underbody w/Crankdown- Galvanized Steel/Aluminum Panels
- Manual Convertible Top w/Fixed Roll-Over Protection- Regular Box Style
- Removable Rear Window- Steel Spare Wheel- Tailgate Rear Cargo Access
- Tires: 245/75R17 H/T- Variable Intermittent Wipers
- Wheels: 17" x 7.5" Black Steel Styled

Safety

- 110 mph Vehicle Max Speed Calibration- 2 12V DC Power Outlets
- 2 Seatback Storage Pockets
- 4-Way Passenger Seat -inc: Manual Recline and Fore/Aft Movement
- 6-Way Driver Seat -inc: Manual Recline, Height Adjustment, Fore/Aft Movement and Manual Lumbar Support
- 60-40 Folding Split-Bench Front Facing Fold Forward Seatback Cloth Rear Seat
- Air Filtration- Analog Appearance- Cloth Low-Back Bucket Seats- Compass
- Cruise Control w/Steering Wheel Controls- Day-Night Rearview Mirror
- Delayed Accessory Power- Fade-To-Off Interior Lighting- Front And Rear Map Lights
- Front Center Armrest w/Storage
- Front Seats w/Cloth Back Material and Manual Driver Lumbar
- Full Carpet Floor Covering -inc: Carpet Front And Rear Floor Mats
- Full Floor Console w/Locking Storage and 2 12V DC Power Outlets
- Gauges -inc: Speedometer, Odometer, Engine Coolant Temp, Tachometer, Engine Hour Meter, Trip Odometer and Trip Computer
- HVAC -inc: Console Ducts- Illuminated Front Cupholder- Illuminated Rear Cupholder
- Instrument Panel Bin, Dashboard Storage, Driver / Passenger And Rear Door Bins
- Interior Trim -inc: Metal-Look Instrument Panel Insert and Metal-Look Console Insert
- Locking Glove Box
- Manual Adjustable Front Head Restraints and Foldable Rear Head Restraints
- Manual Air Conditioning- Manual Tilt/Telescoping Steering Column
- Outside Temp Gauge- Proximity Key For Push Button Start Only
- Redundant Digital Speedometer- Sentry Key Engine Immobilizer- Systems Monitor
- Trip Computer- Urethane Gear Shifter Material
- Vanity w/Driver And Passenger Auxiliary Mirror

Mechanical

- 1700# Maximum Payload- 180 Amp Alternator- 22 Gal. Fuel Tank- 3 Skid Plates
- 3.73 Rear Axle Ratio- 50 State Emissions
- 650CCA Maintenance-Free Battery w/Run Down Protection
- Anti-Lock 4-Wheel Disc Heavy Duty Brakes- Auto Locking Hubs
- Brake Actuated Limited Slip Differential
- Brakes w/Front And Rear Vented Discs, Brake Assist and Hill Hold Control
- Class II Towing Equipment -inc: Hitch and Trailer Sway Control
- Electro-Hydraulic Power Assist Steering- Engine Auto Stop-Start Feature
- Engine Oil Cooler- Engine: 3.6L V6 24V VVT UPG I w/ESS
- Front And Rear Anti-Roll Bars- GVWR: 5,800 lbs- HD Shock Absorbers
- Leading Link Front Suspension w/Coil Springs- Manual Transfer Case
- Normal Duty Plus Suspension- Part-Time Four-Wheel Drive
- Single Stainless Steel Exhaust- Trailer Wiring Harness
- Trailing Arm Rear Suspension w/Coil Springs- Transmission: 6-Speed Manual

Option Packages

Factory Installed Packages

-
ENGINE: 3.0L V6 TURBO DIESEL W/ESS

OPTIONAL EQUIPMENT LIST

G3
-inc: ABS 4-Wheel HD Disc Brakes w/Front FNC, Selective Catalytic Reduction (Urea), Non-Lock Fuel Cap w/Discriminator, Gray EcoDiesel Badge, Supplemental Heater, Tires: 245/75R17 BSW A/T Dueler, Stop-Start Dual Battery System, GVWR: 6,350 lbs, Auxiliary Battery, Anti-Spin Differential Rear Axle, 19 Gallon Fuel Tank

\$4,000

TRANSMISSION: 8-SPEED AUTOMATIC (8HP75)

-inc: Tip Start, Transmission Skid Plate, Selec-Speed Control

\$2,000

8.4" RADIO & PREMIUM AUDIO GROUP

-inc: Google Android Auto, SiriusXM Traffic Plus, USB Host Flip, Radio: Uconnect 4C Nav w/8.4" Display, Integrated Center Stack Radio, Rear View Auto Dim Mirror, For Details, Visit DriveUconnect.com, Console Bin Task Light, 5-Year SiriusXM Travel Link Service, GPS Navigation, 5-Year SiriusXM Traffic Service, Media Hub w/2 Charge Only USBs, 8.4" Touchscreen Display, Apple CarPlay, Off-Road Info Pages, Alpine Premium Audio System, SiriusXM Satellite Radio, SiriusXM Radio Service, For More Info, Call 800-643-2112, GPS Antenna Input, 400W Inverter, HD Radio, Air Conditioning w/Auto Temp Control, 1-Year SiriusXM Guardian Trial, SiriusXM Travel Link, Emergency/Assistance Call, 115V Auxiliary Power Outlet

\$2,095

AUXILIARY SWITCH GROUP

-inc: 700 Amp Maintenance Free Battery, 240 Amp Alternator, Auxiliary Switches

\$345

POPULAR EQUIPMENT PACKAGE

-inc: Convenience Group, Universal Garage Door Opener, Trailer Tow Package, Trailer Hitch Zoom, Class IV Hitch Receiver, Heavy Duty Engine Cooling, 240 Amp Alternator, Black 3-Piece Hard Top, Freedom Panel Storage Bag, Rear Window Defroster, Rear Sliding Window, Technology Group, Google Android Auto, SiriusXM Satellite Radio, SiriusXM Radio Service, For More Info, Call 800-643-2112, GPS Antenna Input, USB Host Flip, Cluster 7.0" TFT Color Display, Integrated Center Stack Radio, 7.0" Touch Screen Display, Air Conditioning w/Auto Temp Control, Integrated Voice Command w/Bluetooth, Apple CarPlay

\$1,695

SAFETY GROUP

-inc: ParkSense Rear Park Assist System, Blind Spot & Cross Path Detection, LED Taillamps

\$995

QUICK ORDER PACKAGE 26S SPORT S

-inc: Engine: 3.0L V6 Turbo Diesel w/ESS G3, Transmission: 8-Speed Automatic (8HP75), Tires: 245/75R17 BSW All-Terrain, Speed Sensitive Power Locks, Automatic Headlamps, Leather Wrapped Steering Wheel, Molded in Color Bumper w/Accent Color, Body Color Fender Flares (2-Piece), Front 1-Touch Down Power Windows, Sport S, Power Heated Mirrors, Daytime Running Lamp System, Security Alarm, Power Tailgate Lock, Remote Keyless Entry, Sun Visors w/Illuminated Vanity Mirrors

\$3,400

Option Packages Total

\$11,500

\$14,530

Texas Vehicle Exchange

tveauto.com

972-242-5350

1724 Luna Road

Carrollton, TX 75006

© 2022 AutoRevo - All rights reserved. - Powered by [AutoRevo](#)