

2022 Ford Bronco Base

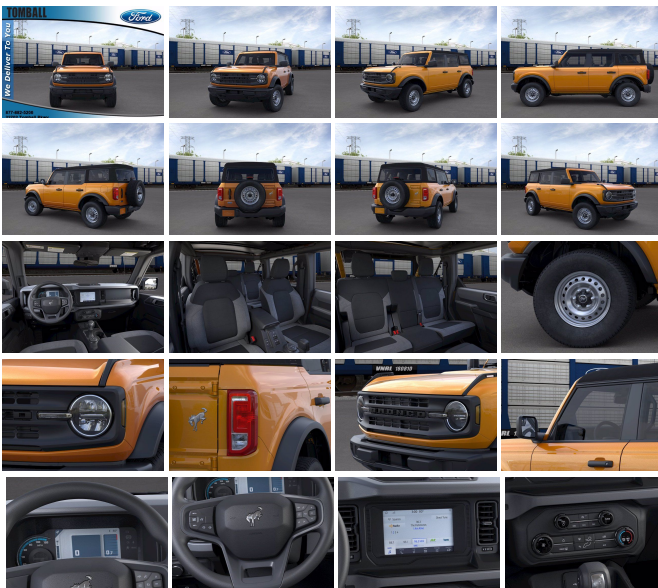
View this car on our website at askjorgelopez.com/7039119/ebrochure



Our Price **\$37,745**

Specifications:

Year:	2022
VIN:	1FMEE5BP1NLA94051
Make:	Ford
Stock:	LA94051
Model/Trim:	Bronco Base
Condition:	New
Body:	SUV
Exterior:	CYBER ORANGE TRI-COAT
Engine:	ENGINE: 2.7L ECOBOOST V6
Interior:	Gray Cloth
Mileage:	6
Drivetrain:	4 Wheel Drive
Economy:	City 18 / Highway 20



"You'll have no regrets driving this dependable 2022 Ford Bronco. Side Impact Beams, Safety Canopy System Curtain 1st And 2nd Row Airbags, Rear Child Safety Locks, Personal Safety System Airbag Occupancy Sensor, Outboard Front Lap And Shoulder Safety Belts -inc: Rear Center 3 Point and Pretensioners.*Fully-Loaded with Additional Options*EQUIPMENT GROUP 101A STANDARD PACKAGE, EQUIPMENT GROUP 101A STANDARD PACKAGE, ENGINE: 2.7L ECOBOOST V6 -inc: electric brake boost, CYBER ORANGE METALLIC TRICOAT, Wheels: 16" Bright Polished Silver-Painted Steel, Wheels w/Hub Covers, Variable Intermittent Wipers, Urethane Gear Shifter Material, Trip Computer, Transmission: 10-Speed Automatic w/o 99P-inc: trail control and trail turn assist w/99P-inc: trail control, trail turn assist and trail one-pedal driving.* Stop By Today *Test drive this must-see, must-drive, must-own beauty today at Tomball Ford, 22702 Tomball Parkway, Tomball, TX 77375."

2022 Ford Bronco Base

Ask Jorge Lopez - (866) 773-1396 - View this car on our website at askjorgelopez.com/7039119/ebrochure

Our Location :



2022 Ford Bronco Base

Ask Jorge Lopez - (866) 773-1396 - View this car on our website at askjorgelopez.com/7039119/ebrochure

Installed Options

Interior

- Driver Seat- Passenger Seat
- 60-40 Folding Split-Bench Front Facing Manual Reclining Fold Forward Seatback Cloth Rear Seat
- Manual Tilt/Telescoping Steering Column
- Gauges -inc: Speedometer, Odometer, Engine Coolant Temp, Tachometer, Inclinator, Trip Odometer and Trip Computer
- Power Rear Windows and Removable 3rd Row Windows- Front Cupholder
- Rear Cupholder- Compass- Proximity Key For Push Button Start Only
- Remote Keyless Entry w/Integrated Key Transmitter, Illuminated Entry, Illuminated Ignition Switch and Panic Button
- Cruise Control w/Steering Wheel Controls- Manual Air Conditioning
- HVAC -inc: Underseat Ducts- Locking Glove Box- Driver Foot Rest
- Interior Trim -inc: Metal-Look Interior Accents - Urethane Gear Shifter Material
- Cloth Bucket Seats -inc: 6-way manual driver and passenger including fore/aft, up/down and recline
- Day-Night Rearview Mirror
- Driver And Passenger Visor Vanity Mirrors w/Driver And Passenger Auxiliary Mirror
- Full Floor Console w/Locking Storage, Mini Overhead Console w/Storage and 2 12V DC Power Outlets
- Front Map Lights- Fade-To-Off Interior Lighting
- Full Carpet Floor Covering -inc: Carpet Front Floor Mats- Carpet Floor Trim
- Cargo Space Lights- Smart Device Remote Engine Start- Tracker System
- Dashboard Storage, Driver / Passenger And Rear Door Bins and 2nd Row Underseat Storage
- Power 1st Row Windows w/Driver And Passenger 1-Touch Up/Down
- Delayed Accessory Power- Power Door Locks w/Autolock Feature- Systems Monitor
- Redundant Digital Speedometer- Trip Computer- Outside Temp Gauge
- Digital/Analog Appearance- Seats w/Cloth Back Material
- Manual Adjustable Front Head Restraints and Foldable Rear Head Restraints
- Front Center Armrest- 2 Seatback Storage Pockets- Perimeter Alarm

- Engine Immobilizer- 2 12V DC Power Outlets- Air Filtration

Exterior

- Wheels: 16" Bright Polished Silver-Painted Steel
- Tires: P255/70R16 A/S -inc: full size spare tire w/TPMS - Wheels w/Hub Covers
- Steel Spare Wheel- Spare Tire Mounted Outside Rear- Clearcoat Paint
- Black Front Bumper w/2 Tow Hooks- Black Rear Step Bumper w/1 Tow Hook
- Black Fender Flares- Black Side Windows Trim- Black Door Handles
- Black Power Heated Side Mirrors w/Convex Spotter and Manual Folding
- Removable Rear Window- Light Tinted Glass- Variable Intermittent Wipers
- Fully Galvanized Steel Panels- Black Grille
- Manual Convertible Top w/Fixed Roll-Over Protection- Conventional Rear Cargo Access
- Tailgate/Rear Door Lock Included w/Power Door Locks
- Ford Co-Pilot360 - Autolamp Auto On/Off Aero-Composite Led Low/High Beam Auto High-Beam Daytime Running Lights Preference Setting Headlamps w/Delay-Off
- Headlights-Automatic Highbeams

Safety

- Driver Seat- Passenger Seat
- 60-40 Folding Split-Bench Front Facing Manual Reclining Fold Forward Seatback Cloth Rear Seat
- Manual Tilt/Telescoping Steering Column
- Gauges -inc: Speedometer, Odometer, Engine Coolant Temp, Tachometer, Inclinometer, Trip Odometer and Trip Computer
- Power Rear Windows and Removable 3rd Row Windows- Front Cupholder
- Rear Cupholder- Compass- Proximity Key For Push Button Start Only
- Remote Keyless Entry w/Integrated Key Transmitter, Illuminated Entry, Illuminated Ignition Switch and Panic Button
- Cruise Control w/Steering Wheel Controls- Manual Air Conditioning
- HVAC -inc: Underseat Ducts- Locking Glove Box- Driver Foot Rest
- Interior Trim -inc: Metal-Look Interior Accents - Urethane Gear Shifter Material
- Cloth Bucket Seats -inc: 6-way manual driver and passenger including fore/aft, up/down and recline
- Day-Night Rearview Mirror
- Driver And Passenger Visor Vanity Mirrors w/Driver And Passenger Auxiliary Mirror
- Full Floor Console w/Locking Storage, Mini Overhead Console w/Storage and 2 12V DC Power Outlets
- Front Map Lights- Fade-To-Off Interior Lighting
- Full Carpet Floor Covering -inc: Carpet Front Floor Mats - Carpet Floor Trim
- Cargo Space Lights- Smart Device Remote Engine Start- Tracker System
- Dashboard Storage, Driver / Passenger And Rear Door Bins and 2nd Row Underseat Storage
- Power 1st Row Windows w/Driver And Passenger 1-Touch Up/Down
- Delayed Accessory Power- Power Door Locks w/Autolock Feature- Systems Monitor
- Redundant Digital Speedometer- Trip Computer- Outside Temp Gauge
- Digital/Analog Appearance- Seats w/Cloth Back Material
- Manual Adjustable Front Head Restraints and Foldable Rear Head Restraints
- Front Center Armrest- 2 Seatback Storage Pockets- Perimeter Alarm
- Engine Immobilizer- 2 12V DC Power Outlets- Air Filtration

Mechanical

- Engine: 2.3L EcoBoost I-4
- Transmission: 10-Speed Automatic w/o 99P-inc: trail control and trail turn assist w/99P-inc: trail control, trail turn assist and trail one-pedal driving
- 3.73 Axle Ratio- GVWR: TBD- 50 State Emissions System
- Engine Auto Stop-Start Feature
- Transmission w/Driver Selectable Mode and Sequential Shift Control
- Electronic Transfer Case- Part And Full-Time Four-Wheel Drive
- 110-Amp/Hr 800CCA Maintenance-Free Battery w/Run Down Protection
- Towing Equipment -inc: Trailer Sway Control- 1444# Maximum Payload
- Gas-Pressurized Shock Absorbers- Front Anti-Roll Bar- Electric Power-Assist Steering
- Single Stainless Steel Exhaust- 20.8 Gal. Fuel Tank- Auto Locking Hubs
- Short And Long Arm Front Suspension w/Coil Springs
- Multi-Link Rear Suspension w/Coil Springs
- 4-Wheel Disc Brakes w/4-Wheel ABS, Front Vented Discs, Brake Assist, Hill Descent Control, Hill Hold Control and Electric Parking Brake

Option Packages

Factory Installed

Packages

-
ENGINE: 2.7L ECOBOOST V6
-inc: electric brake boost \$1,895

-
Option Packages Total
\$1,895

Ask Jorge Lopez

askjorgelopez.com

(866) 773-1396

22702 Tomball Parkway

Tomball, TX 77375

© 2022 AutoRevo - All rights reserved. - Powered by AutoRevo