



## 2022 Chevrolet Traverse LS

**Our Price \$34,435**

**Retail Value ~~\$34,935~~**

View this vehicle on our website at [parksdeals.com](https://parksdeals.com)

Parks Chevrolet, Inc.

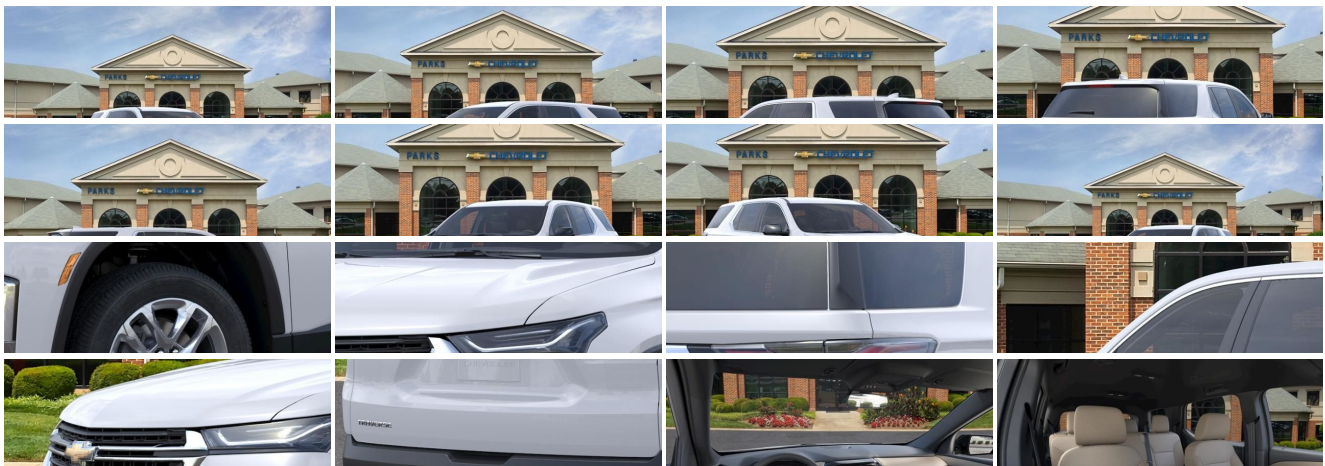
[833-825-2763](tel:833-825-2763)

615 NC-66 South, Kernersville, NC 27284

[Photos](#)

[Details](#)

[Contact](#)





## Specifications:

|                    |                                 |
|--------------------|---------------------------------|
| <b>Year:</b>       | 2022                            |
| <b>VIN:</b>        | 1GNERFKW8NJ118127               |
| <b>Make:</b>       | Chevrolet                       |
| <b>Stock:</b>      | 118127X                         |
| <b>Model/Trim:</b> | Traverse LS                     |
| <b>Condition:</b>  | New                             |
| <b>Body:</b>       | SUV                             |
| <b>Exterior:</b>   | Summit White                    |
| <b>Engine:</b>     | ENGINE, 3.6L V6, SIDI, VVT      |
| <b>Interior:</b>   | Jet Blk/Chai Premium Clth Cloth |
| <b>Mileage:</b>    | 0                               |
| <b>Drivetrain:</b> | Front Wheel Drive               |
| <b>Economy:</b>    | City 18 / Highway 27            |

## Vehicle Description

2022 Chevrolet Traverse LS Summit White 3.6L V6 SIDI VVT FWD 9-Speed Automatic

4-Wheel Disc Brakes, 6-Speaker Audio System Feature, ABS brakes, Air Conditioning, Alloy wheels, Automatic temperature control, Brake assist, Dual front impact airbags, Dual front side impact airbags, Electronic Stability Control, Emergency communication system: OnStar Guidance, Exterior Parking Camera Rear, Front anti-roll bar, Front Bucket Seats, Front dual zone A/C, Front License Plate Bracket Mounting Package, Low tire pressure warning, Occupant sensing airbag, Overhead airbag, Panic alarm, Power steering, Power windows, Preferred Equipment Group 1LS, Radio: Chevrolet Infotainment System AM/FM Stereo, Rear air conditioning, Rear anti-roll bar, Rear window defroster, Remote keyless entry, Security system, SiriusXM Radio, Speed control, Steering wheel mounted audio controls, Variably intermittent wipers.

Contact us online at [www.parkscharlotte.com](http://www.parkscharlotte.com) or give us a call at (704) 288-0662 to have your questions answered, obtain a price quote for this vehicle, or schedule your test drive today. Our prices cannot be beat! Come visit us at 8530 IKEA BLVD CHARLOTTE NC. Price excludes administrative, origination, documentary, procurement and/or other administrative fee. You may or may not qualify for all rebates. Price does not include tax, tag, and fees. Price does not include any aftermarket products, bodies, or upfits. Price includes applicable rebates:\$500 - Customer Cash. Exp. 04/04/2022

### Installed Options

#### Interior

- Seats, front bucket- Seating, 8-passenger (2-3-3 seating configuration)
- Seat trim, premium cloth- Seats, third row 60/40 split-bench, manual-folding
- Floor mats, color-keyed all rows (Deleted when LPO floor mats or LPO floor liners are ordered.)
- Steering wheel controls, mounted controls for audio, phone and cruise
- Door locks, power programmable with lockout protection
- Keyless Open includes extended range Remote Keyless Entry with lock/unlock feature
- Cruise control, electronic with set and resume speed - Remote panic alarm
- Theft-deterrent system, electrical, unauthorized entry
- Seat adjuster, driver 6-way manual- Seat adjuster, front passenger 4-way manual
- Head restraints, front, 2-way adjustable
- Head restraints, second and third row outboard, 2-way manual-folding
- Console, front center with 2 cup holders, covered storage bin with storage and removable tray
- Steering wheel, urethane- Steering column, tilt
- Display, 3.5" driver instrument information, monochromatic- Compass display, digital
- Windows, power with driver Express Up/Down and front passenger Express-Down
- Keyless Start- Vehicle health management
- USB ports 2 first row, 2 second row, 2 third row
- Air conditioning, tri-zone automatic climate control with individual climate settings for driver, right front passenger and rear seat occupants
- Sensor, humidity and windshield temperature- Defogger, rear-window electric
- Heater ducts, 2nd row- Cup holders, 10 total

### Option Packages

#### Factory Installed Packages

ENGINE, 3.6L V6, SIDI, VVT  
(310 hp [232.0 kW] @ 6800 rpm, 266 lb-ft of torque [361 N-m] @ 2800 rpm)

- Umbrella holders, driver and front passenger doors
- Mirror, inside rearview manual day/night
- Visors, driver and passenger illuminated vanity mirrors, covered
- Lighting, interior with theater dimming, cargo compartment, reading lights for front seats, second row reading lamps integrated into dome light, door-and tailgate-activated switches and illuminated entry and exit feature
- Cargo storage, bin under rear floor
- Chevrolet Connected Access capable (Subject to terms. See onstar.com or dealer for details.)

## Exterior

- Wheels, 18" (45.7 cm) Bright Silver painted aluminum
- Tires, P255/65R18 all-season blackwall- IntelliBeam, auto high beam control
- Mirrors, outside heated power-adjustable, Black, manual-folding
- Wheel, spare, 18" (45.7 cm) steel- Tire, compact spare, T135/70R18, blackwall
- Active Aero Shutters, upper and lower- Moldings, Black bodyside- Headlamps, LED
- Headlamps, automatic on/off- Taillamps, LED- Glass, deep-tinted
- Wipers, front intermittent with washers- Wiper, rear intermittent with washer
- Door handles, body-color- Liftgate, rear manual

## Safety

- Seats, front bucket- Seating, 8-passenger (2-3-3 seating configuration)
- Seat trim, premium cloth- Seats, third row 60/40 split-bench, manual-folding
- Floor mats, color-keyed all rows (Deleted when LPO floor mats or LPO floor liners are ordered.)
- Steering wheel controls, mounted controls for audio, phone and cruise
- Door locks, power programmable with lockout protection
- Keyless Open includes extended range Remote Keyless Entry with lock/unlock feature
- Cruise control, electronic with set and resume speed - Remote panic alarm
- Theft-deterrent system, electrical, unauthorized entry
- Seat adjuster, driver 6-way manual- Seat adjuster, front passenger 4-way manual
- Head restraints, front, 2-way adjustable
- Head restraints, second and third row outboard, 2-way manual-folding
- Console, front center with 2 cup holders, covered storage bin with storage and removable tray
- Steering wheel, urethane- Steering column, tilt
- Display, 3.5" driver instrument information, monochromatic- Compass display, digital
- Windows, power with driver Express Up/Down and front passenger Express-Down
- Keyless Start- Vehicle health management
- USB ports 2 first row, 2 second row, 2 third row
- Air conditioning, tri-zone automatic climate control with individual climate settings for driver, right front passenger and rear seat occupants
- Sensor, humidity and windshield temperature- Defogger, rear-window electric
- Heater ducts, 2nd row- Cup holders, 10 total
- Umbrella holders, driver and front passenger doors
- Mirror, inside rearview manual day/night
- Visors, driver and passenger illuminated vanity mirrors, covered
- Lighting, interior with theater dimming, cargo compartment, reading lights for front seats, second row reading lamps integrated into dome light, door-and tailgate-activated switches and illuminated entry and exit feature
- Cargo storage, bin under rear floor
- Chevrolet Connected Access capable (Subject to terms. See onstar.com or dealer for details.)

## Mechanical

- Transmission, 9-speed automatic
- Engine, 3.6L V6, SIDI, VVT (310 hp [232.0 kW] @ 6800 rpm, 266 lb-ft of torque [361 N-m] @ 2800 rpm)
- E10 Fuel capable- Engine control, stop-start system
- Engine control, stop-start system override- Driver Mode Selector
- Axle, 3.49 final drive ratio- Front wheel drive
- Battery, heavy-duty 600 cold-cranking amps- Alternator, 170 amps
- GVWR, 6160 lbs. (2800 kg)- Suspension, Ride and Handling- Steering, power
- Brakes, 4-wheel antilock, 4-wheel disc, 17" front and rear- Electric Parking Brake
- Capless fuel fill- Exhaust, dual-outlet with circular bright tips - Tool kit, road emergency

Parks Chevrolet, Inc.

Parks Chevrolet, Inc.

View this car on our website at [parksdeals.com/7036248](https://parksdeals.com/7036248)

Website: [parksdeals.com](https://parksdeals.com)

Phone: 833-825-2763

Map: 615 NC-66 South, Kernersville, NC 27284

