



## 2005 Chevrolet Corvette w/ Carbon Fiber Fenders & BORLA Exhaust!

**Website Price \$25,995**

View this vehicle on our website at [autoparkdallas.com](http://autoparkdallas.com)



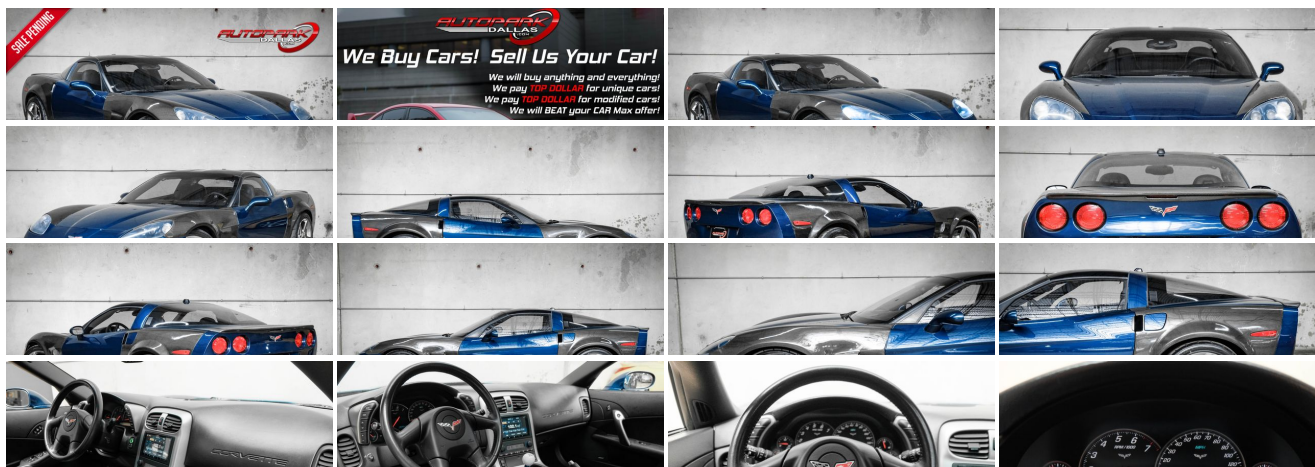
(214) 945-2601

2061 S Stemmons Fwy , Lewisville, TX 75067

Photos

Details

Contact





## Specifications:

<b>Year:</b>	2005
<b>VIN:</b>	1G1YY24U955107748
<b>Make:</b>	Chevrolet
<b>Model/Trim:</b>	Corvette w/ Carbon Fiber Fenders & BORLA Exhaust!
<b>Condition:</b>	Pre-Owned
<b>Body:</b>	Coupe
<b>Exterior:</b>	LeMans Blue Metallic
<b>Engine:</b>	ENGINE, 6.0L LS2 V8 SFI
<b>Interior:</b>	Ebony Leather
<b>Transmission:</b>	TRANSMISSION, 6-SPEED MANUAL, SHORT-THROW
<b>Mileage:</b>	46,654
<b>Drivetrain:</b>	Rear Wheel Drive
<b>Economy:</b>	City 18 / Highway 26

## Vehicle Description

AutoPark Dallas is thrilled to offer you this Carbon Fiber decked out 2005 Chevrolet Corvette with Z51 & 1SB Package for sale! These bald eagle screaming U.S. born beauties are a thrill to drive and always stand out in any crowded car meet or parking lot. Our Corvette here APD has sick looking ZR1 style Carbon Fiber Fenders, loaded well straight from the factory, and best of all has the Z51 Performance Package to give the extra 'Need for Speed' feel! Not to forget BORLA Performance Exhaust that really makes this Corvette sing! Come swing by to check out this Corvette parked here in our indoor 16,000 Sq Ft Showroom located in Dallas , Texas amongst our inventory of 100+ other Performance / Modified and Luxury cars!

## 2005 Chevrolet Corvette

\* Clean CarFax !\*

\* LOW MILEAGE !\*

\* 2 Fobs + 1 Key !\*

\* 1SB Package !\*

\* Z51 Performance Package !\*

## MODIFICATIONS!

C6 ZR1 Carbon Fiber Front Fenders

C6 Carbon Creations ZR Edition Rear Fenders

C6 ZR1 Carbon Fiber Spoiler

BORLA Performance Exhaust System

ALPINE Stereo Unit w/ Bluetooth

MGW Flat Stick Short Throw Shifter

## STOCK!

LeMans Blue Metallic Exterior

Ebony Black Leather Interior

Heated Driver & Passenger Seats

Digital Heads-Up Display

Dual Climate Controls

Cruise Control

Push Button Start

Comfort Access Keyless Entry

Driver Seat Memory

Daytime Running Lights

6.0L V8 SFI Engine

6-Speed Manual Transmission

Rear Wheel Drive

Professionally Detailed!

Well Maintained!

\* Free CarFax Report !\*

AND SO MUCH MORE!!!

---

## Financing is available!

Check out our Payment Calculator to get an estimate on your monthly payments!

OR

Get pre-approved in no time by filling out a credit application on the 'Finance' section of our website!

We also offer MANY different Extended Warranty options!

---

Check out our Google Reviews by \*Clicking\* this LINK!

Referrals and Testimonials is what our business is built on!

---

The team here at AutoPark Dallas, is dedicated to offering a level of customer service not usually found in the automobile industry. Thanks to years of extensive car buying / selling experience, we pursue quality used and new vehicles that are hand-picked from factory sources. Our love for automobiles and dislike of traditional dealership tactics is what motivates us to provide the service we do! The pride we take in continuing this service long after the vehicle has been delivered is what we strive for! Looking forward to making every effort to see that our customer is completely satisfied and a friend for life!

Pre-purchase inspections are always welcomed!

We also offer airport pick-up, competitive financing options, free CarFax Reports, Car Shipping nationwide, Extended Warranty plans, and so much more!

Trade-In(s) are always accepted or sell us your used car (MODIFIED OR NOT)! Please call or text for more information about Trade-Ins or selling your car to us @ (214) 945-2601!

---

#(214) 945-2601

Call or Text **Anytime!**

# Se habla Español

# WE BUY CARS!

## WWW.AUTOPARKDALLAS.COM

### Installed Options

#### Interior

- Air conditioning, dual-zone, automatic, includes individual climate settings for driver and right front passenger, automatic climate control and outside temperature display
- Air filtration, includes pollen filter - Antenna, integral, hidden
- Console, floor, lockable, includes 2 covered cupholders, ashtray with cigar lighter, auxiliary power outlet and CD storage
- Cruise control, electronic with set and resume speed - Defogger, rear-window, electric
- Door locks, power, programmable, includes lockout protection- Floor mats, carpeted
- Hatch release, push button open, includes power hatch pulldown
- Ignition, keyless, engaged with push button start
- Instrumentation, analog, electronic, includes Driver Information Center with 2 line display
- Keyless Access, with push-button start, includes 2 remote transmitters which enable automatic door unlock and open by touching door switch
- Lighting, interior, courtesy, cargo and glovebox
- Mirror, inside rearview, manual day/night, includes dual reading lights
- Oil life monitoring system- Seat adjuster, power, driver 6-way
- Seats, front bucket with leather seating surfaces, includes back angle adjustment
- Sound system, ETR AM/FM stereo with CD player and MP3 playback, includes Radio Data System, seek-and-scan, digital clock, auto-tone control, automatic volume, Theftlock and (U66) Sound system feature, 7-speaker system
- Steering column, manual, Tilt-Wheel- Steering wheel, leather-wrapped
- Storage, includes lockable glovebox, center console and 2 rear compartments with covers
- Theft-deterrent system, push button start, immobilizer and audible visual alarm
- Tire Pressure Monitor System, air pressure sensors in each tire pressure display in Driver Information Center
- Visors, illuminated vanity mirrors, driver and front passenger
- Windows, power, includes driver and passenger express-down

#### Exterior

- Daytime running lamps- Fog lamps, front, integral in fascia- Glass, Solar-Ray light tinted
- Headlamps, bi-functional, Xenon, high-intensity discharge, includes automatic exterior lamp control
- Mirrors, outside rearview, power, heated, body-color
- Roof panel, removable, 1-piece, body-color- Wipers, intermittent, front

#### Safety

- Air conditioning, dual-zone, automatic, includes individual climate settings for driver and right front passenger, automatic climate control and outside temperature display
- Air filtration, includes pollen filter - Antenna, integral, hidden
- Console, floor, lockable, includes 2 covered cupholders, ashtray with cigar lighter, auxiliary power outlet and CD storage
- Cruise control, electronic with set and resume speed - Defogger, rear-window, electric
- Door locks, power, programmable, includes lockout protection- Floor mats, carpeted
- Hatch release, push button open, includes power hatch pulldown
- Ignition, keyless, engaged with push button start
- Instrumentation, analog, electronic, includes Driver Information Center with 2 line display
- Keyless Access, with push-button start, includes 2 remote transmitters which enable automatic door unlock and open by touching door switch
- Lighting, interior, courtesy, cargo and glovebox
- Mirror, inside rearview, manual day/night, includes dual reading lights
- Oil life monitoring system- Seat adjuster, power, driver 6-way
- Seats, front bucket with leather seating surfaces, includes back angle adjustment
- Sound system, ETR AM/FM stereo with CD player and MP3 playback, includes Radio Data System, seek-and-scan, digital clock, auto-tone control, automatic volume, Theftlock and (U66) Sound system feature, 7-speaker system
- Steering column, manual, Tilt-Wheel- Steering wheel, leather-wrapped
- Storage, includes lockable glovebox, center console and 2 rear compartments with covers

### Option Packages

#### Factory Installed Packages

##### ENGINE, 6.0L LS2 V8 SFI

(400 HP [298.3 kW] @ 6000 rpm, 400 lb.-ft.  
[542.8 N-m] @ 4400 rpm)

##### TRANSMISSION, 6-SPEED MANUAL, SHORT-THROW

(Includes (GU6) Axle, 3.42 ratio)

##### AIR BAGS, FRONTAL AND SIDE IMPACT, DRIVER AND FRONT PASSENGER

(Always use safety belts and proper child restraints, even with air bags. See the Owners Manual for more safety information.)

##### HEAD-UP DISPLAY

includes dot-matrix readouts for street mode, track mode with g-meter, vehicle speed, engine rpm, and readings from key gauges including water temperature and oil pressure

##### HOMELINK TRANSMITTER

includes garage door opener, 3-channel programmable, located on driver visor

##### MEMORY PACKAGE

2 driver settings, remembers "presets" for 6-way power seat, outside mirrors, climate control, radio presets and telescoping steering column

##### ONSTAR, 1-YEAR SAFE AND SOUND SERVICE

includes automatic notification of air bag deployment, stolen vehicle tracking, emergency services, roadside assistance, remote door unlock, remote horn and lights, GM Goodwrench remote diagnostics, AccidentAssist and Online Concierge. Drivers can also obtain the available voice-activated, hands-free Personal Calling service and Virtual Advisor that provides location-based traffic and weather reports and other personalized information.

\$695

##### PERFORMANCE HANDLING PACKAGE

performance-oriented package for the Gymkhana/Autocross enthusiast, includes power steering, engine oil and transmission coolers, stiffer springs and stabilizer bars, specific shock absorbers, larger brakes with cross-drilled rotors, specific tires and performance gearing, Z51-specific, 6-speed manual transmission or performance axle ratio with automatic transmission

\$1,695

##### ROOF PANEL, REMOVABLE, 1-PIECE, TRANSPARENT

(Included with (C2L) Roof Package.)

\$750

##### SOUND SYSTEM FEATURE, XM SATELLITE RADIO.

features 67 channels of 100% commercial-free music included in its over 150 channels of the best in music, news, sports, talk, comedy, XM

\$325

- Theft-deterrent system, push button start, immobilizer and audible visual alarm
- Tire Pressure Monitor System, air pressure sensors in each tire pressure display in Driver Information Center
- Visors, illuminated vanity mirrors, driver and front passenger
- Windows, power, includes driver and passenger express-down

## Mechanical

- Wheels, 5-spoke painted aluminum, 18" x 8.5" (45.7 cm x 21.6 cm), front and 19" x 10.0" (48.3 cm x 25.4 cm), rear
- Active handling, improves traction and enhances vehicle stability
- Axle, 3.42 ratio, limited slip (Included and only available with (MN6) Transmission, 6-speed manual.)
- Brakes, 4-wheel antilock, 4-wheel disc
- Engine access, rear opening hood, includes underhood lamp
- Engine, 6.0L LS2 V8 SFI (400 HP [298.3 kW] @ 6000 rpm, 400 lb.-ft. [542.8 N-m @ 4400 rpm)
- Exhaust, aluminized stainless-steel with polished 3" stainless-steel tips
- Fuel capacity, approximate, 18 gallon (68 liters) - Rear wheel drive
- Steering, power, speed-sensitive, rack and pinion
- Suspension, 4-wheel independent, includes transverse fiberglass leaf springs
- Tires, front P245/40ZR18, extended mobility, Eagle F1
- Tires, rear P285/35ZR19, extended mobility, Eagle F1 - Traction control, all-speed
- Transmission, 6-speed manual, short-throw (Includes (GU6) Axle, 3.42 ratio.)

Available in Music, Home, Sports, and Comedy, and Instant Traffic and Weather, and more. Digital quality sound with coast-to-coast signal coverage. Three trial months-no obligation.

AXLE, 3.42 RATIO, LIMITED SLIP

EMISSIONS, FEDERAL REQUIREMENTS

PREMIUM COAT PAINT

\$750

PREFERRED EQUIPMENT GROUP

includes (AJ7) Air bags, frontal and side impact, driver and front passenger, Cargo convenience net, in rear compartment area, (UV6) Head-Up Display, (UG1) Homelink transmitter, (D42) Luggage shade, (AAB) Memory Package, (DD0) Mirrors, inside rearview with compass and driver outside rearview, auto-dimming, (AG2) Seat adjuster, power, front passenger 6-way, (AQ9) Seats, front Sport bucket with perforated leather seating surfaces, (KA1) Seats, heated, driver and passenger, (US9) Sound system, ETR AM/FM stereo with 6-disc, in dash CD changer, MP3 playback, (N37) Steering column, power telescopic, includes manual tilt

\$4,360

HIGHWEAR NUANCE LEATHER SEAT TRIM

SEATS, FRONT SPORT BUCKET WITH PERFORATED LEATHER SEATING SURFACES

includes back angle adjustment, adjustable lumbar and side bolsters

WHEELS, POLISHED, 5-SPOKE ALUMINUM, 18" x 8.5" (45.7 CM x 21.6 CM), FRONT AND 19" x 10.0" (48.3 CM x 25.4 CM), REAR \$1,295

Option Packages Total

\$9,870



Auto Park Dallas

View this car on our website at [autoparkdallas.com/7035663](http://autoparkdallas.com/7035663)

Website: [autoparkdallas.com](http://autoparkdallas.com)

Phone: (214) 945-2601

Map: [2061 S Stemmons Fwy, Lewisville, TX 75067](#)

