

njtrucking.com
856-693-3181
1229 Broadway
Westville, New Jersey
08093

King of Cars and
Trucks

2018 FORD F350 DRW REG CAB 4X4 6.7L DIESEL LOW MILES WHEELS TIRES & MORE

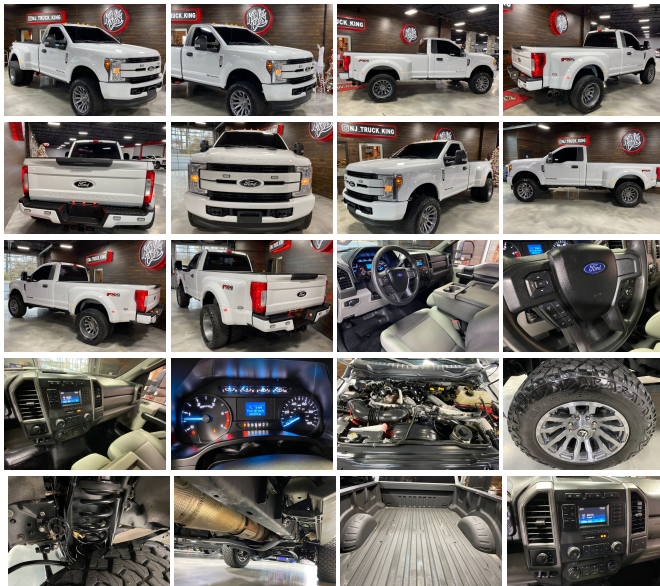
View this car on our website at njtrucking.com/7033733/ebrochure



Our Price **\$59,900**

Specifications:

Year: 2018
VIN: 1FTRF3DT9JEB35526
Make: FORD F350 DRW REG CAB
Model/Trim: 4X4 6.7L DIESEL LOW MILES WHEELS TIRES & MORE
Condition: Pre-Owned
Body: Pickup Truck
Exterior: White
Engine: ENGINE: 6.7L 4V OHV POWER STROKE V8 TURBO DIESEL B20
Interior: Gray
Mileage: 65,229
Drivetrain: 4 Wheel Drive



2018 FORD F-350 DRW 4X4
 REG CAB
 6.7L POWERSTROKE TURBO DIESEL !
 AUTOMATIC TRANSMISSION
 (ONLY 65,229 ORIGINAL / ACTUAL MILES)
 CLEAN CARFAX
 LEVELING KIT
 20" FUEL WHEELS
 35' VENOM TIRES
 STROBE PACKAGE
 AMP POWER STEPS (RUNNING BOARDS)
 COLOR MATCHED
 ALL POWER OPTIONS
 UPFITTER SWITCHES
 EXCELLENT CONDITION
 RUNS AND DRIVES LIKE NEW!
 SHARP COLOR COMBO
 KILLER LOOK TO IT!
 WILL NOT LAST LONG!
 DONT MISS IT!

\$59,900

CALL /TEXT ROB 856-381-6621 WITH ANY QUESTIONS

Our Location :



2018 FORD F350 DRW REG CAB 4X4 6.7L DIESEL LOW MILES WHEELS TIRES & MORE
 King of Cars and Trucks - 856-693-3181 - View this car on our website at njtruckking.com/7033733/ebrochure

Installed Options

Interior

- Gauges -inc: Speedometer, Odometer, Oil Pressure, Engine Coolant Temp, Tachometer, Transmission Fluid Temp, Engine Hour Meter, Trip Odometer and Trip Computer
- HD Vinyl 40/20/40 Split Bench Seat -inc: center armrest, cupholder, storage and driver's side manual lumbar
- Securilock Anti-Theft Ignition (pats) Engine Immobilizer- Trip Computer
- 2 12V DC Power Outlets
- 4-Way Driver Seat -inc: Manual Recline and Fore/Aft Movement
- 4-Way Passenger Seat -inc: Manual Recline and Fore/Aft Movement - Air Filtration
- Analog Appearance- Day-Night Rearview Mirror- Fade-To-Off Interior Lighting
- Front Map Lights- Full Cloth Headliner- Full Vinyl/Rubber Floor Covering
- Illuminated Locking Glove Box- Instrument Panel Covered Bin and Dashboard Storage
- Interior Trim -inc: Chrome Interior Accents - Manual 1st Row Windows
- Manual Adjustable Front Head Restraints- Manual Air Conditioning
- Manual Tilt/Telescoping Steering Column- Outside Temp Gauge
- Passenger Visor Vanity Mirror- Systems Monitor
- Underhood And Pickup Cargo Box Lights - Urethane Gear Shifter Material

Exterior

- Auto On/Off Aero-Composite Halogen Daytime Running Lights Preference Setting Headlamps w/Delay-Off
- Full-Size Spare Tire Stored Underbody w/Crankdown
- Tires: LT245/75R17E BSW A/S (6)
- Wheels: 17" Argent Painted Steel -inc: Hub covers/center ornaments not included
- Aluminum Panels- Black Door Handles
- Black Front Bumper w/Black Rub Strip/Fascia Accent and 2 Tow Hooks - Black Grille
- Black Manual Side Mirrors w/Manual Folding- Black Rear Step Bumper
- Black Side Windows Trim and Black Front Windshield Trim - Cab Clearance Lights
- Cargo Lamp w/High Mount Stop Light- Clearcoat Paint- Fixed Rear Window
- Front License Plate Bracket- Light Tinted Glass- Manual Extendable Trailer Hitch Mirror

Option Packages

Factory Installed Packages

ENGINE: 6.7L 4V OHV POWER STROKE V8 TURBO DIESEL B20
 -inc: manual push-button engine-exhaust braking and intelligent oil-life monitor, 29 Gallon Fuel Tank, 3.55 Axle Ratio, 175 Amp Heavy Duty Alternator, Dual 78-AH 750 CCA Batteries

Option Packages Total **\$9,120**

- Front License Plate Bracket- Light Tinted Glass- Manual Extendable Trailer Style Mirrors
- Manual Tailgate/Rear Door Lock- Regular Box Style- Steel Spare Wheel
- Tailgate Rear Cargo Access- Variable Intermittent Wipers

Safety

- Gauges -inc: Speedometer, Odometer, Oil Pressure, Engine Coolant Temp, Tachometer, Transmission Fluid Temp, Engine Hour Meter, Trip Odometer and Trip Computer
- HD Vinyl 40/20/40 Split Bench Seat -inc: center armrest, cupholder, storage and driver's side manual lumbar
- Securilock Anti-Theft Ignition (pats) Engine Immobilizer- Trip Computer
- 2 12V DC Power Outlets
- 4-Way Driver Seat -inc: Manual Recline and Fore/Aft Movement
- 4-Way Passenger Seat -inc: Manual Recline and Fore/Aft Movement - Air Filtration
- Analog Appearance- Day-Night Rearview Mirror- Fade-To-Off Interior Lighting
- Front Map Lights- Full Cloth Headliner- Full Vinyl/Rubber Floor Covering
- Illuminated Locking Glove Box- Instrument Panel Covered Bin and Dashboard Storage
- Interior Trim -inc: Chrome Interior Accents - Manual 1st Row Windows
- Manual Adjustable Front Head Restraints- Manual Air Conditioning
- Manual Tilt/Telescoping Steering Column- Outside Temp Gauge
- Passenger Visor Vanity Mirror- Systems Monitor
- Underhood And Pickup Cargo Box Lights- Urethane Gear Shifter Material

Mechanical

- Class V Towing Equipment -inc: Hitch, Brake Controller and Trailer Sway Control
- Engine: 6.2L 2-Valve SOHC EFI NA V8 Flex-Fuel -inc: Flex-Fuel badge on fleet orders only
- Transmission: TorqShift 6-Speed Automatic (6R140) -inc: SelectShift- 157 Amp Alternator
- 3.73 Axle Ratio- 34 Gal. Fuel Tank
- 4-Wheel Disc Brakes w/4-Wheel ABS, Front And Rear Vented Discs, Brake Assist and Hill Hold Control
- 50-State Emissions System- 7180# Maximum Payload
- 72-Amp/Hr 650CCA Maintenance-Free Battery w/Run Down Protection
- Auto Locking Hubs- Dual Rear Wheels- Electronic Transfer Case- Firm Suspension
- Front And Rear Anti-Roll Bars- Front Suspension w/Coil Springs
- GVWR: 14,000 lb Payload Package- HD Shock Absorbers
- Hydraulic Power-Assist Steering- Leaf Rear Suspension w/Leaf Springs
- Part-Time Four-Wheel Drive- Single Stainless Steel Exhaust- Trailer Wiring Harness
- Transmission w/Oil Cooler

King of Cars and Trucks

njtruckking.com

856-693-3181

1229 Broadway

Westville, New Jersey 08093

© 2024 AutoRevo - All rights reserved. - Powered by AutoRevo