

2020 MAZDA MX-5 MIATA 2D CONVERTIBLE SPORT ONLY 12K MILES LIKE NEW

View this car on our website at njtruckking.com/7033461/ebrochure



Our Price **\$26,900**

Specifications:

Year:	2020
VIN:	JM1NDAB79L0417423
Make:	MAZDA MX-5 MIATA
Model/Trim:	2D CONVERTIBLE SPORT ONLY 12K MILES LIKE NEW
Condition:	Pre-Owned
Body:	Convertible
Exterior:	White
Engine:	Engine: SKYACTIV-G 2.0L DOHC 16-Valve 4-Cylinder
Interior:	Black Cloth
Mileage:	12,665
Drivetrain:	Rear Wheel Drive
Economy:	City 26 / Highway 34

BUY IT NOW!

2020 MAZDA MX-5 MIATA SPORT

2D CONVERTIBLE

ONLY 12,665 ORIGINAL / ACTUAL MILES!

4-CYLINDER

MANUAL TRANSMISSION

LIKE NEW CONDITION

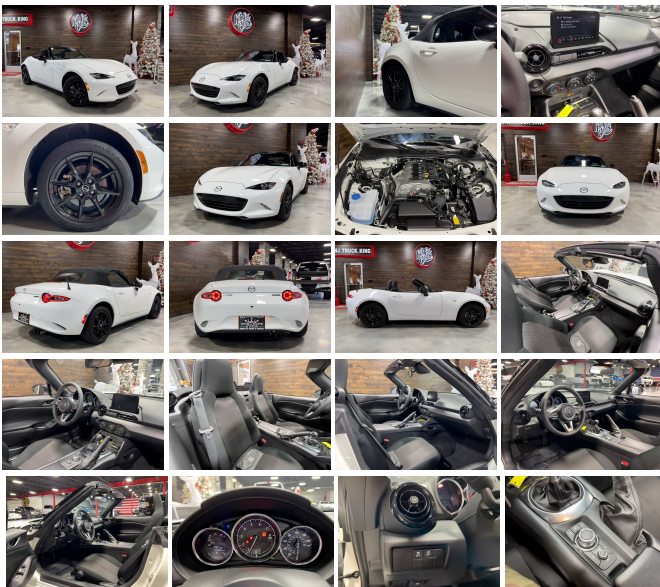
BOTH KEYS

RUNS DRIVES AND SHOWS LIKE NEW!

DONT MISS IT!

BUY IT NOW \$26,900

CALL/TEXT ZACH 609-504-8808 FOR MORE INFO



Our Location :



2020 MAZDA MX-5 MIATA 2D CONVERTIBLE SPORT ONLY 12K MILES LIKE NEW

King of Cars and Trucks - 856-693-3181 - View this car on our website at njtruckking.com/7033461/ebrochure

Installed Options

Interior

- Cloth Upholstery- FOB Controls -inc: Cargo Access and Windows
- Gauges -inc: Speedometer, Odometer, Engine Coolant Temp, Tachometer, Trip Odometer and Trip Computer
- Power Door Locks w/Autolock Feature- Proximity Key For Doors And Push Button Start
- Remote Keyless Entry w/Integrated Key Transmitter, Illuminated Entry, Illuminated Ignition Switch and Panic Button
- Trip Computer- 1 12V DC Power Outlet- 4-Way Passenger Seat- 6-Way Driver Seat
- Air Filtration- Analog Appearance- Cargo Features -inc: Spare Tire Mobility Kit
- Cargo Space Lights- Carpet Floor Trim- Cruise Control w/Steering Wheel Controls
- Day-Night Rearview Mirror- Driver And Passenger Visor Vanity Mirrors- Driver Foot Rest
- Engine Immobilizer- Fade-To-Off Interior Lighting
- Front Bucket Seats -inc: reclining and forward/back slide feature, driver side front tilt and integrated headrests
- Front Center Armrest- Front Cupholder
- Full Carpet Floor Covering -inc: Carpet Front Floor Mats
- Full Floor Console w/Covered Storage and 1 12V DC Power Outlet
- Instrument Panel Bin and Locking Interior Concealed Storage
- Interior Trim -inc: Chrome/Metal-Look Interior Accents - Leather Gear Shifter Material
- Manual Air Conditioning- Manual Tilt/Telescoping Steering Column
- Outside Temp Gauge- Power 1st Row Windows w/Driver And Passenger 1-Touch Down
- Power Fuel Flap Locking Type- Remote Releases -Inc: Power Cargo Access
- Seats w/Cloth Back Material- Sport Leather/Metal-Look Steering Wheel- Systems Monitor
- Vinyl Door Trim Insert

Exterior

- Auto Off Projector Beam Led Low/High Beam Auto-Leveling Daytime Running Lights Preference Setting Headlamps
- Black Grille- Black Power Side Mirrors w/Manual Folding
- Black Side Windows Trim. Black Front Windshield Trim and Black Rear Window Trim

- Body-Colored Door Handles- Body-Colored Front Bumper- Body-Colored Rear Bumper
- Clearcoat Paint- Fixed Rear Window w/Defroster- Galvanized Steel/Aluminum Panels
- LED Brakelights- Light Tinted Glass
- Manual Convertible Top w/Glass Rear Window and Windblocker Fixed Wind Blocker
- Spare Tire Mobility Kit- Tires: 195/50R16 High-Performance Summer
- Trunk Rear Cargo Access- Variable Intermittent Wipers
- Wheels: 16" x 6" Metallic Black Aluminum Alloy

Safety

- Cloth Upholstery- FOB Controls -inc: Cargo Access and Windows
- Gauges -inc: Speedometer, Odometer, Engine Coolant Temp, Tachometer, Trip Odometer and Trip Computer
- Power Door Locks w/Autolock Feature- Proximity Key For Doors And Push Button Start
- Remote Keyless Entry w/Integrated Key Transmitter, Illuminated Entry, Illuminated Ignition Switch and Panic Button
- Trip Computer- 1 12V DC Power Outlet- 4-Way Passenger Seat- 6-Way Driver Seat
- Air Filtration- Analog Appearance- Cargo Features -inc: Spare Tire Mobility Kit
- Cargo Space Lights- Carpet Floor Trim- Cruise Control w/Steering Wheel Controls
- Day-Night Rearview Mirror- Driver And Passenger Visor Vanity Mirrors- Driver Foot Rest
- Engine Immobilizer- Fade-To-Off Interior Lighting
- Front Bucket Seats -inc: reclining and forward/back slide feature, driver side front tilt and integrated headrests
- Front Center Armrest- Front Cupholder
- Full Carpet Floor Covering -inc: Carpet Front Floor Mats
- Full Floor Console w/Covered Storage and 1 12V DC Power Outlet
- Instrument Panel Bin and Locking Interior Concealed Storage
- Interior Trim -inc: Chrome/Metal-Look Interior Accents - Leather Gear Shifter Material
- Manual Air Conditioning- Manual Tilt/Telescoping Steering Column
- Outside Temp Gauge- Power 1st Row Windows w/Driver And Passenger 1-Touch Down
- Power Fuel Flap Locking Type- Remote Releases -Inc: Power Cargo Access
- Seats w/Cloth Back Material- Sport Leather/Metal-Look Steering Wheel- Systems Monitor
- Vinyl Door Trim Insert

Mechanical

- 100 Amp Alternator- 11.9 Gal. Fuel Tank- 2.87 Axle Ratio
- 4-Wheel Disc Brakes w/4-Wheel ABS, Front Vented Discs, Brake Assist and Hill Hold Control
- 45-Amp/Hr Maintenance-Free Battery- Double Wishbone Front Suspension w/Coil Springs
- Electric Power-Assist Speed-Sensing Steering- Engine Oil Cooler
- Engine: SKYACTIV-G 2.0L DOHC 16-Valve 4-Cylinder- Front And Rear Anti-Roll Bars
- Gas-Pressurized Shock Absorbers- Multi-Link Rear Suspension w/Coil Springs
- Quasi-Dual Stainless Steel Exhaust w/Chrome Tailpipe Finisher- Rear-Wheel Drive
- Transmission: SKYACTIV-MT 6-Speed Manual -inc: short throw shifter

King of Cars and Trucks

njtruckking.com

856-693-3181

1229 Broadway

Westville, New Jersey 08093

© 2024 AutoRevo - All rights reserved. - Powered by AutoRevo