

**paniaguaautos.com**  
(706)529-1919



## 2009 Chevrolet Traverse LTZ

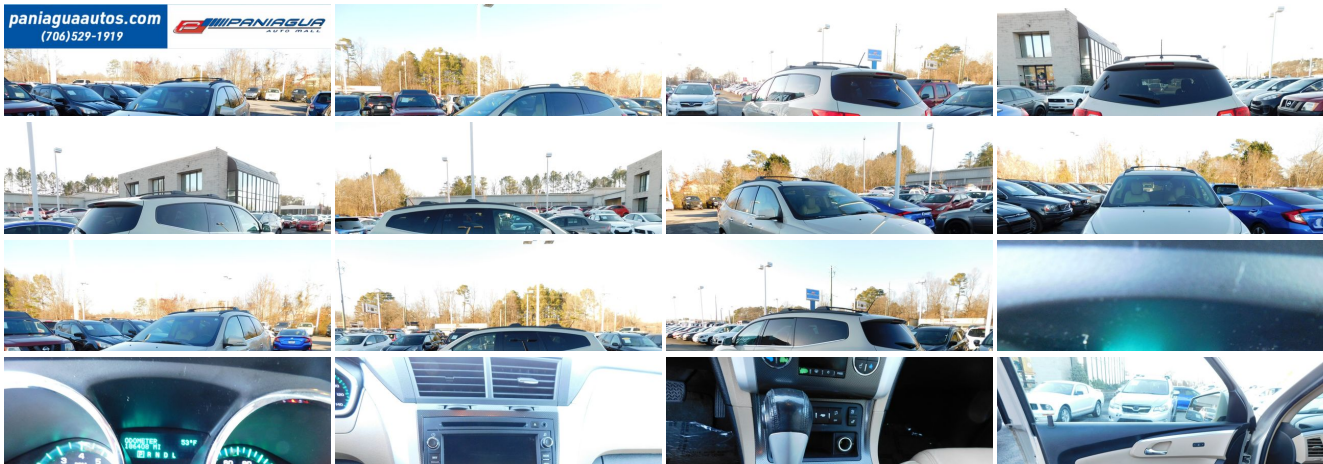
**Our Price \$5,995**

View this vehicle on our website at [paniaguaautos.com](http://paniaguaautos.com)



706-529-1919 & 423-472-4045  
1776 E. Walnut Ave, Dalton, GA 30721

Photos  
Details  
Contact





Specifications:

Year:	2009
VIN:	1GNER33D39S174133
Make:	Chevrolet
Stock:	7855
Model/Trim:	Traverse LTZ
Condition:	Pre-Owned
Body:	SUV
Exterior:	Gold
Engine:	ENGINE, 3.6L SIDI V6
Interior:	Tan Leather
Transmission:	AUTOMATIC
Mileage:	186,384
Drivetrain:	Front Wheel Drive
Economy:	City 17 / Highway 24

Vehicle Description

2009 CHEVROLET TRAVERSE LTZ 3.6L V6 AUTOMATIC LEATHER INTERIOR ALL POWER STOP BY TODAY AND CHECK OUT OUR MOST RECENT INVENTORY

Installed Options

Interior

- Air conditioning, rear manual
- Air conditioning, tri-zone automatic climate control with individual climate settings for driver and right-front passenger and second/third row controls for second and third row passengers
- Cruise control, electronic with set and resume speed
- Door locks, power programmable with lockout protection
- Power outlet, 3-prong household-style, 110-volt- Reclining front buckets
- Remote Keyless Entry, programmable with 2 transmitters and panic button
- Remote vehicle start, includes extended range Remote Keyless Entry
- Seat adjuster, 2-position memory for driver's seat and outside rearview mirrors
- Seat, 8-way power driver with power recline and lumbar control and memory
- Seat, third row manual 60/40 split-folding bench
- Seating, 7-passenger (2-2-3 seating configuration) with 2nd row flat-folding Captains Chair and third row 60/40 split flat folding bench seat
- Steering wheel, leather-wrapped, with (UK3) redundant audio and (K34) cruise controls.
- Bluetooth for phone, personal cell phone connectivity to vehicle audio system and HMI (Human Machine Interface)
- Cargo storage, tray under rear floor
- Console, front center with 2 cup holders and storage
- Cupholders 10 total, 1st row, 2 center console, 2 bottle holders in doors, 2nd row, 2 on door armrest, 2 bottle holders in doors, 3rd row, 2 on armrest
- Defogger, rear-window electric
- Driver Information Center, enhanced with feature personalization
- Floor covering, color-keyed carpeting
- Floor mats, color-keyed carpeted front, second and third row, removable
- Horn, dual-note
- Instrumentation, enhanced Driver Information Center with personalization features, speedometer, tachometer, outside temperature display, low oil, fuel and coolant indicators, odometer, trip odometer and trip computer and digital compass
- Insulation, acoustical package
- Lighting, interior with theater dimming, cargo compartment, reading lights for front seats, second row reading lamps integrated into dome light, door-and tailgate-activated switches and illuminated entry and exit feature

Option Packages

Factory Installed Packages

ENGINE, 3.6L SIDI V6  
(281 hp [210 kW] @ 6300 rpm, 266 lb-ft of torque @ 3400 rpm [359.1 N-m])

- Mirror, inside rearview auto-dimming- Rear Parking Assist, Ultrasonic
- Rearview camera system
- Seat, 4-way power passenger with power recline and lumbar control
- Seats, front, heated and cooled driver and passenger
- Steering column, Tilt-Wheel and telescopic with brake/transmission shift interlock
- Trim, interior, includes Metallic instrument panel and console trim
- Universal Home Remote, includes garage door opener, 3-channel programmable
- Visors, driver and front passenger, padded with cloth trim, color-keyed and illuminated vanity mirrors
- Windows, power with driver Express-Up and -Down and passenger Express- Down
- XM NavTraffic enhances your vehicle's GPS navigation system by showing real-time traffic data when it's needed most--while you're driving. Available in over 80 markets, XM NavTraffic displays various traffic-impacting incidents such as construction, road closures, accidents and disabled vehicles so you can take alternate routes to get to your destination faster. Traffic flow data is also available in select markets, showing average traffic speed and estimated drive time along your route. For more information, visit [gm.xmradio.com/navtraffic](http://gm.xmradio.com/navtraffic) (Required XM Radio and XM NavTraffic monthly subscriptions sold separately after trial period. XM NavTraffic only available in select markets. All fees and programming subject to change. Subscriptions subject to Customer Agreement available at [gm.xmradio.com](http://gm.xmradio.com). XM service only available in the 48 contiguous United States)

## Exterior

- Mirrors, outside heated power-adjustable, power-folding body-color with integrated turn signal indicators, driver-side memory and integral spotter mirror
- Tires, P255/55R20 H-rated, blackwall
- Wheel, 17" (43.2 cm) compact steel spare wheel and tire
- Wheels, 4-20" x 7.5" (50.8 cm x 19.1 cm) machined ultrabright aluminum
- Door handles, chrome
- Glass, Solar-Ray deep-tinted (all windows except light-tinted glass on windshield and driver and front passenger side glass)
- Headlamp control, automatic on and off
- Headlamps, projector low beam and halogen high beam - Liftgate, rear power
- Mirrors, integral spotter for blind-zone- Moldings, Bright at beltline
- Moldings, body-color with chrome accent bodyside
- Roof rails, Black, longitudinal (Cross rails available through Chevy Accessories.)
- Spoiler, rear- Wiper, rear intermittent with washer
- Wipers, front intermittent with washers

## Safety

- Air conditioning, rear manual
- Air conditioning, tri-zone automatic climate control with individual climate settings for driver and right-front passenger and second/third row controls for second and third row passengers
- Cruise control, electronic with set and resume speed
- Door locks, power programmable with lockout protection
- Power outlet, 3-prong household-style, 110-volt- Reclining front buckets
- Remote Keyless Entry, programmable with 2 transmitters and panic button
- Remote vehicle start, includes extended range Remote Keyless Entry
- Seat adjuster, 2-position memory for driver's seat and outside rearview mirrors
- Seat, 8-way power driver with power recline and lumbar control and memory
- Seat, third row manual 60/40 split-folding bench
- Seating, 7-passenger (2-2-3 seating configuration) with 2nd row flat-folding Captains Chair and third row 60/40 split flat folding bench seat
- Steering wheel, leather-wrapped, with (UK3) redundant audio and (K34) cruise controls.
- Bluetooth for phone, personal cell phone connectivity to vehicle audio system and HMI (Human Machine Interface)
- Cargo storage, tray under rear floor
- Console, front center with 2 cup holders and storage
- Cupholders 10 total, 1st row, 2 center console, 2 bottle holders in doors, 2nd row, 2 on door armrest, 2 bottle holders in doors, 3rd row, 2 on armrest
- Defogger, rear-window electric
- Driver Information Center, enhanced with feature personalization
- Floor covering, color-keyed carpeting
- Floor mats, color-keyed carpeted front, second and third row, removable
- Horn, dual-note
- Instrumentation, enhanced Driver Information Center with personalization features, speedometer, tachometer, outside temperature display, low oil, fuel and coolant indicators, odometer, trip odometer and trip computer and digital compass
- Insulation, acoustical package
- Lighting, interior with theater dimming, cargo compartment, reading lights for front seats, second row reading lamps integrated into dome light, door-and tailgate-activated switches and illuminated entry and exit feature
- Mirror, inside rearview auto-dimming- Rear Parking Assist, Ultrasonic
- Rearview camera system
- Seat, 4-way power passenger with power recline and lumbar control

- Seat, 4-way power passenger with power recline and lumbar control
- Seats, front, heated and cooled driver and passenger
- Steering column, Tilt-Wheel and telescopic with brake/transmission shift interlock
- Trim, interior, includes Metallic instrument panel and console trim
- Universal Home Remote, includes garage door opener, 3-channel programmable
- Visors, driver and front passenger, padded with cloth trim, color-keyed and illuminated vanity mirrors
- Windows, power with driver Express-Up and -Down and passenger Express- Down
- XM NavTraffic enhances your vehicle's GPS navigation system by showing real-time traffic data when it's needed most--while you're driving. Available in over 80 markets, XM NavTraffic displays various traffic-impacting incidents such as construction, road closures, accidents and disabled vehicles so you can take alternate routes to get to your destination faster. Traffic flow data is also available in select markets, showing average traffic speed and estimated drive time along your route. For more information, visit [gm.xmradio.com/navtraffic](http://gm.xmradio.com/navtraffic) (Required XM Radio and XM NavTraffic monthly subscriptions sold separately after trial period. XM NavTraffic only available in select markets. All fees and programming subject to change. Subscriptions subject to Customer Agreement available at [gm.xmradio.com](http://gm.xmradio.com). XM service only available in the 48 contiguous United States)

## Mechanical

- Transmission, 6-speed automatic, electronically controlled with overdrive includes auto-grade braking and tap-shift manual shift control (Included and only available with CR14526 FWD models)
- Axle, 3.16 ratio- Brakes, 4-wheel antilock, 4-wheel disc
- Engine, 3.6L SIDI V6 (281 hp [210 kW] @ 6300 rpm, 266 lb-ft of torque @ 3400 rpm [359.1 N-m]) ((288 hp [214.7 kW] @ 6300 rpm, 270 lb-ft of torque @ 3400 rpm [364.5 N-m] with dual exhaust).)
- Exhaust, dual with chrome tips - Front wheel drive
- GVWR, 6411 lbs. (2908 kg) (CR14526 FWD models only.)
- Steering, power, variable effort- Suspension, Ride and Handling

We sale used vehicles as is no warranty. We sale extended warranties ask one of our sales rep. for details.

Paniagua Auto Mall

Paniagua Auto Mall

View this car on our website at [paniaguaautos.com/7032929](http://paniaguaautos.com/7032929)

Website: [paniaguaautos.com](http://paniaguaautos.com)

Phone: [706-529-1919](tel:706-529-1919) & [423-472-4045](tel:423-472-4045)

Map: [1776 E. Walnut Ave , Dalton, GA 30721](#)

