



2008 Chevrolet Silverado 3500HD SRW Work Truck

Our Price \$10,800

View this vehicle on our website at autoworldmotorssa.com

Auto World Motors

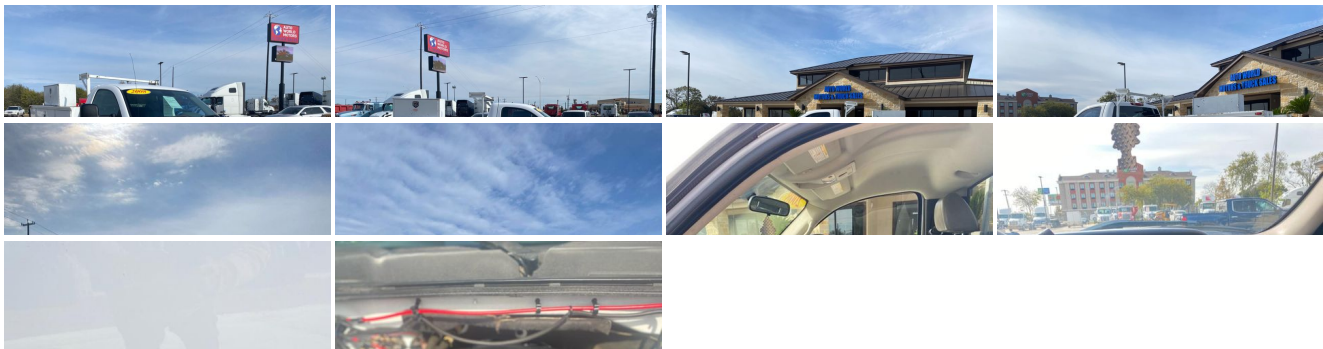
[210-648-0403](tel:210-648-0403)

343 Landa Ave , San Antonio, TX 78237

Photos

Details

Contact



Specifications:

Year:	2008
VIN:	1GBHC34K18E165114
Make:	Chevrolet

Model/Trim:	Silverado 3500HD SRW Work Truck
Condition:	Pre-Owned
Body:	Pickup Truck
Exterior:	White
Engine:	ENGINE, VORTEC 6.0L VARIABLE VALVE TIMING V8 SFI
Interior:	Tan
Mileage:	175,000
Drivetrain:	Rear Wheel Drive

Vehicle Description

This 2008 Service Truck. 3500 HD. Automatic with 175k miles IS LISTED AT \$10,800. COME IN TODAY TO TEST DRIVE IT AND WE CAN NEGOTIATE.

Auto World Motors offers only the best used cars, trucks and SUV's in the San Antonio, TX area. Give us a call at 210-648-5000, email us at autoworld.343@gmail.com or stop by and visit at 1915 Southeast Loop 410 , San Antonio, TX 78220.

Installed Options

Interior

- Power outlets, 2 auxiliary instrument panel-mounted with covers, 12-volt
- Seats, front 40/20/40 split-bench, 3-passenger, driver and front passenger manual reclining with outboard head restraints and center fold-down armrest with storage
- Air conditioning delete provides heater only (Requires Regular Cab models)
- Assist handle, front passenger (Also includes rear assist handles in the headliner on Extended and Crew Cab models)
- Coat hooks, rear driver and passenger side
- Cup holders, front (Also includes rear cupholders on Extended and Crew Cab models)
- Driver Information Center with odometer, trip odometer and message center (monitors numerous systems depending on vehicle equipment level including low fuel, turn signal "on", transmission temperature and oil change notification) (Driver Information Center controls are operated through the trip button unless (UK3) steering wheel mounted audio controls is ordered)
- Floor covering, Black rubberized vinyl
- Instrumentation, analog with speedometer, fuel level, engine temperature, tachometer, voltmeter and oil pressure indicators
- Lighting, interior with dome and reading lights, illuminated entry feature and backlit instrument panel switches
- Mirror, inside rearview manual day/night
- Steering column, Tilt-Wheel, adjustable with brake/transmission shift interlock
- Steering wheel, includes theft-deterrent locking feature
- Tire Pressure Monitoring System (does not apply to spare tire) (Not standard on (C7W) 11,400 lbs. (5171 kg) GVWR)
- Visors, driver and front passenger, sliding with clip and passenger side vanity mirror with cover, Opal Gray-colored
- Warning tones, headlamp on, key-in-ignition, driver and passenger buckle up reminder and turn signal on

Exterior

- Headlamps, dual halogen composite with automatic exterior lamp control and flash-to-pass feature
- Tires, LT265/75R16E on-/off-road, blackwall (Not available with (C7W) 11,400 lbs. (5171 kg) GVWR (dual rear wheel)). Includes 5 tires with (E63) Fleetside pickup box. Includes 4 tires with (ZW9) pickup box delete.)
- Air dam, Black- Bumper, front chrome- Door handles, Black
- Glass, Solar-Ray light-tinted, all windows- Grille, chrome surround
- Lamps, dual cargo area lamps- Mirrors, outside manual, Black, manual-folding
- Tire carrier, outside spare, winch-type mounted under frame at rear (Orders with (ZW9) Pickup box delete will not include a Spare Tire Carrier unless a spare tire is ordered)
- Wheels, 4 - 16" x 7.0" (40.6 cm x 17.8 cm) 8-lug steel (single rear wheel) Spare not included with (ZW9) pickup box delete unless a spare tire is ordered (Center cap is Argent. Not available with (C7W) 11,400 lbs GVWR (dual rear wheels).)
- Wipers, front intermittent wet-arm with pulse washers

Safety

- Power outlets, 2 auxiliary instrument panel-mounted with covers, 12-volt

- Seats, front 40/20/40 split-bench, 3-passenger, driver and front passenger manual reclining with outboard head restraints and center fold-down armrest with storage
- Air conditioning delete provides heater only (Requires Regular Cab models)
- Assist handle, front passenger (Also includes rear assist handles in the headliner on Extended and Crew Cab models)
- Coat hooks, rear driver and passenger side
- Cup holders, front (Also includes rear cupholders on Extended and Crew Cab models)
- Driver Information Center with odometer, trip odometer and message center (monitors numerous systems depending on vehicle equipment level including low fuel, turn signal "on", transmission temperature and oil change notification) (Driver Information Center controls are operated through the trip button unless (UK3) steering wheel mounted audio controls is ordered)
- Floor covering, Black rubberized vinyl
- Instrumentation, analog with speedometer, fuel level, engine temperature, tachometer, voltmeter and oil pressure indicators
- Lighting, interior with dome and reading lights, illuminated entry feature and backlit instrument panel switches
- Mirror, inside rearview manual day/night
- Steering column, Tilt-Wheel, adjustable with brake/transmission shift interlock
- Steering wheel, includes theft-deterrent locking feature
- Tire Pressure Monitoring System (does not apply to spare tire) (Not standard on (C7W) 11,400 lbs. (5171 kg) GVWR)
- Visors, driver and front passenger, sliding with clip and passenger side vanity mirror with cover, Opal Gray-colored
- Warning tones, headlamp on, key-in-ignition, driver and passenger buckle up reminder and turn signal on

Mechanical

- Transmission, 6-speed automatic, heavy-duty, electronically controlled with overdrive and tow/haul mode (Requires (LY6) Vortec 6.0L V8 SFI engine)
- Air cleaner, high-capacity- Alternator, 125 amps
- Battery, heavy-duty 600 cold-cranking amps, maintenance-free with rundown protection and retained accessory power
- Cooling, auxiliary external transmission oil cooler, heavy-duty air-to-oil
- Cooling, external engine oil cooler, heavy-duty air-to-oil, integral to driver side of radiator tank
- Differential, heavy-duty automatic locking rear (Included with (Z71) Off-Road Suspension Package. Standard on CC30903 models. Standard with (GED) 9700 lb. GVWR (single rear wheel) and (C4M) 9900 lb. GVWR (single rear wheel).)
- Engine, Vortec 6.0L Variable Valve Timing V8 SFI (353 hp [262.8 kW] @ 5400 rpm, 373 lb-ft of torque [505.6 N-m] @ 4400 rpm) on (GED) 9700 lbs. (4400 kg) GVWR and (C4M) 9900 lbs. (4490 kg) GVWR)-(312 hp [232.3 kW] @ 4400 rpm, 373 lb-ft of torque [505.6 N-m] @ 4400 rpm on (C7W) 11,400 lbs. (5171 kg) GVWR)
- Exhaust, aluminized stainless-steel muffler and tailpipe- Frame, hydroformed
- GVWR, 9700 lbs. (4400 kg) with single rear wheels (Requires CC30903 models)
- Pickup box, delete includes bumper delete, spare tire delete and spare tire carrier delete (Standard on CC30903)
- Rear axle, 3.73 ratio- Rear wheel drive- Recovery hooks, front, frame-mounted
- Steering, power, recirculating ball
- Suspension Package, Handling/Trailer, heavy-duty includes 46 mm piston monotube shocks and 34mm front stabilizer bar
- Suspension, front independent, torsion bar- Suspension, rear 3-stage springs

Auto World Motors

Auto World Motors

View this car on our website at autoworldmotorssa.com/7032868

Website: autoworldmotorssa.com

Phone: [210-648-0403](tel:210-648-0403)

Map: [343 Landa Ave, San Antonio, TX 78237](#)

