



2013 Nissan GT-R Premium Jotech Stage 2 E85 Tune!

Website Price \$88,995

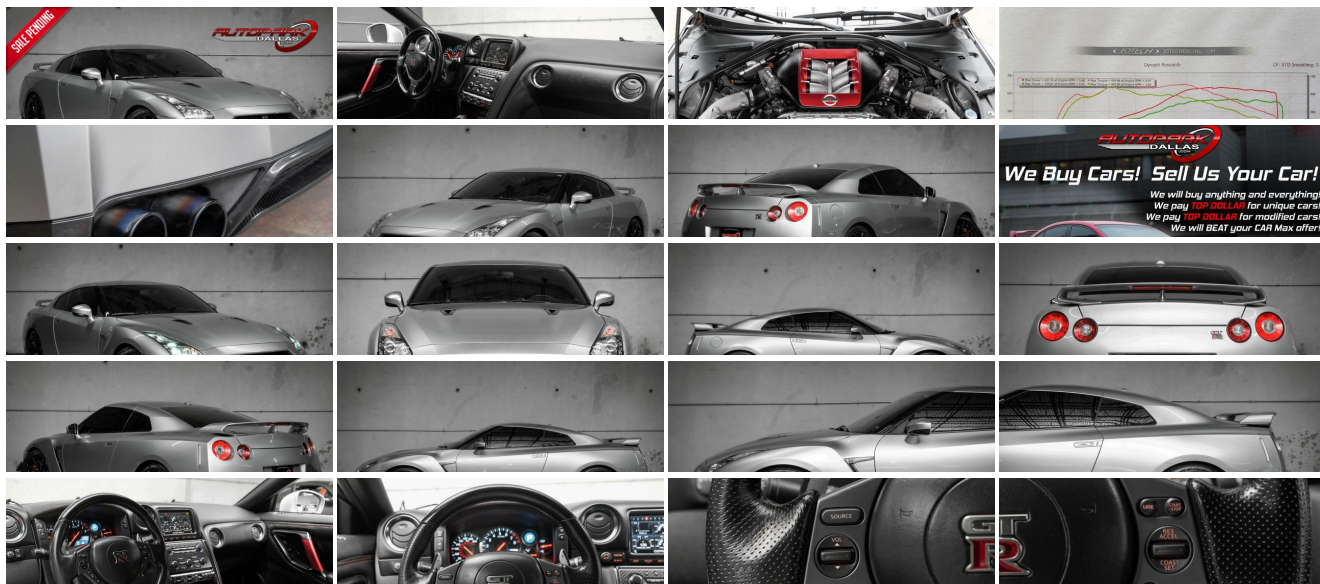
View this vehicle on our website at autoparkdallas.com



(214) 945-2601

2061 S Stemmons Fwy , Lewisville, TX 75067

Photos
Details
Contact



Specifications:

Year:	2013
VIN:	JN1AR5EF1DM260767
Make:	Nissan
Model/Trim:	GT-R Premium Jotech Stage 2 E85 Tune!
Condition:	Pre-Owned
Body:	Coupe
Exterior:	Super Silver Metallic
Engine:	3.8L DOHC 24-valve twin-turbocharged V6 engine -inc: plasma sprayed bores
Interior:	Gray Leather
Transmission:	Sequential 6-speed manual dual-clutch paddle-shift, driver configurable transmission w/automatic mode
Mileage:	26,859
Drivetrain:	All Wheel Drive
Economy:	City 16 / Highway 23

Vehicle Description

AutoPark Dallas is thrilled to offer you this Stage 2 JOTECH 2013 Nissan GT-R Premium on E85 for sale! Our GT-R is a different beast but the same animal, with JOTECH giving plenty of love under the hood with a Stage 2 E85 Tune and tons of other goodies that make an impressive 637 horses a reality! DO! NOT! HESISTATE!!! To swinging on by to check out the insanity of this Nissan GT-R parked here in our indoor 16,000 Sq Ft Showroom located in Dallas , Texas amongst our inventory of 100+ other Unique / Modified and Luxury vehicles!

2013 Nissan GT-R Premium

* Clean CarFax !*

* LOW MILEAGE !*

MODIFICATIONS!

JOTECH Motorsports Stage 2 E85 Tune
- Zeitronix ECA
- Flex Fuel Sensor
- Custom Fuel Lines & Fittings

JOTECH Motorsports 4" Exhaust System w/ Midpipe

ETS GTR 3" Downpipes

ETS GTR Twin Air Intake Kit

Injector Dynamics 1050X CC

DW300C Compact Fuel Pump Kit

NGK DILKAR8A8 Laser Iridium Spark Plug

COBB Tuning Accessport V3

Carbon Fiber Front Side Canards

Windows Tinted

STOCK!

Super Silver Metallic Exterior

Gray Suede / Leather Interior

Bluetooth
Navigation
Heated Front Row Seats
Keyless Entry
Push Button Start
Steering Wheel Mounted Controls
Dual Climate Controls
Bose Premium Audio System
Universal Garage Opener
Selectable Mode w/ Paddle Shifters
3.8L DOHC 24-Valve Twin-Turbocharged V6 Engine
6-Speed Dual-Clutch Transmission
All Wheel Drive
Professionally Detailed!
Well Maintained!
** Free CarFax Report !**
AND SO MUCH MORE!!!

Financing is available!

Check out our Payment Calculator to get an estimate on your monthly payments!

OR

Get pre-approved in no time by filling out a credit application on the 'Finance' section of our website!

Check out our Google Reviews by **Clicking** this [LINK!](#)

Referrals and Testimonials is what our business is built on!

The team here at AutoPark Dallas, is dedicated to offering a level of customer service not usually found in the automobile industry. Thanks to years of extensive car buying / selling experience, we pursue quality used and new vehicles that are hand-picked from factory sources. Our love for automobiles and dislike of traditional dealership tactics is what motivates us to provide the service we do! The pride we take in continuing this service long after the vehicle has been delivered is what we strive for! Looking forward to making every effort to see that our customer is completely satisfied and a friend for life!

Pre-purchase inspections are always welcomed!

We also offer airport pick-up, competitive financing options, free CarFax Reports, Car Shipping nationwide, Extended Warranty plans, and so much more!

Trade-In(s) are always accepted or sell us your used car (MODIFIED OR NOT)! Please call or text for more information about Trade-Ins or selling your car to us @ (214) 945-2601!

#(214) 945-2601

Call or Text **Anytime!**

Se habla Español

WE BUY CARS!

WWW.AUTOPARKDALLAS.COM

Installed Options

Interior

- (2) 12V aux pwr outlets- (2) front map lights- (3) cupholders -inc: (2) front, (1) rear
- 3-position set-up switches for suspension, transmission, vehicle dynamic control (VDC)
- Aluminum interior trim- Auto-dimming rearview mirror
- Center console w/push button engine start- Door step lamp
- Dual rear synthetic leather bucket seats w/entry/exit switch
- Dual sunvisors w/illuminated vanity mirrors
- Dual zone auto climate control -inc: front micro-filters - Front door map pockets
- HDD navigation system w/7" LCD color display -inc: voice recognition, touch screen, Zagat restaurant review feature
- HomeLink universal transceiver- Intelligent key system w/immobilizer
- Large center mounted tachometer w/gear display, easy-to-read graphics
- Leather-wrapped door armrests- Leather-wrapped shift knob & parking brake lever
- Leather-wrapped steering wheel w/cruise, audio, Bluetooth controls -inc: leather-appointed magnesium paddle shifters, tilt & telescopic column
- Leather/synthetic suede trimmed heated front sport seats -inc: 8-way pwr driver seat, 4-way pwr passenger seat
- Locking fuel filler door- Locking glove compartment
- Multifunction driver-focused display system -inc: gauges, timer, data logging capability, easy-to-read graphics, driver programmable functions, trip computer
- Overhead sunglass storage
- Padded interior trim -inc: soft padding on dash & door panels
- Pwr door locks w/auto-locking feature- Pwr windows w/one-touch up & down
- Remote trunk release- Vehicle security alarm system
- XM NavTraffic & NavWeather capability

Exterior

- P255/40ZR20 front & P285/35ZR20 rear nitrogen filled Dunlop SP sport summer high performance run flat tires
- 20" x 9.5" front & 20" x 10.5" rear RAYS premium dark near black finished forged aluminum wheels
- 4-ring taillights w/LED illumination- Aerodynamic front underbody cover- Anti-chip paint
- Body-color rear spoiler- Body-colored heated remote pwr folding mirrors
- Carbon fiber rear underbody diffuser- Dark gray grille- Front fender vents
- Front/rear body-colored bumpers- Integrated flush-mounted door handles
- Speed-sensitive variable intermittent windshield wipers
- Super wide illumination auto on/off HID headlights
- UV filtering front & side window glass

Safety

- (2) 12V aux pwr outlets- (2) front map lights- (3) cupholders -inc: (2) front, (1) rear
- 3-position set-up switches for suspension, transmission, vehicle dynamic control (VDC)
- Aluminum interior trim- Auto-dimming rearview mirror
- Center console w/push button engine start- Door step lamp
- Dual rear synthetic leather bucket seats w/entry/exit switch
- Dual sunvisors w/illuminated vanity mirrors
- Dual zone auto climate control -inc: front micro-filters - Front door map pockets
- HDD navigation system w/7" LCD color display -inc: voice recognition, touch screen, Zagat restaurant review feature
- HomeLink universal transceiver- Intelligent key system w/immobilizer
- Large center mounted tachometer w/gear display, easy-to-read graphics
- Leather-wrapped door armrests- Leather-wrapped shift knob & parking brake lever
- Leather-wrapped steering wheel w/cruise, audio, Bluetooth controls -inc: leather-appointed magnesium paddle shifters, tilt & telescopic column
- Leather/synthetic suede trimmed heated front sport seats -inc: 8-way pwr driver seat, 4-way pwr passenger seat
- Locking fuel filler door- Locking glove compartment

Option Packages

Factory Installed Packages

[E10] SUPER SILVER METALLIC SPECIAL PAINT	\$3,000
---	---------

[W01] COLD WEATHER PKG	
-inc: P255/40ZR20 front & P285/35ZR20 rear nitrogen filled Dunlop all season high performance run flat tires, 20" x 9.5" front & 20" x 10.5" rear premium smoke gray forged aluminum wheels w/special bead knurling, unique coolant-to-water ratio	

[50S] 50 STATE EMISSIONS	
--------------------------	--

SUPER SILVER METALLIC	
-----------------------	--

STANDARD PAINT	
----------------	--

[L92] CARPETED GT-R LOGO FLOOR MATS	\$285
-------------------------------------	-------

GRAY, LEATHER SEAT TRIM	
-------------------------	--

Option Packages Total	\$3,285
-----------------------	---------

- Loading rack inner door -inc: Loading glove compartment
- Multifunction driver-focused display system -inc: gauges, timer, data logging capability, easy-to-read graphics, driver programmable functions, trip computer
- Overhead sunglass storage
- Padded interior trim -inc: soft padding on dash & door panels
- Pwr door locks w/auto-locking feature- Pwr windows w/one-touch up & down
- Remote trunk release- Vehicle security alarm system
- XM NavTraffic & NavWeather capability

Mechanical

- 3.8L DOHC 24-valve twin-turbocharged V6 engine -inc: plasma sprayed bores
- All wheel drive
- Brembo disc brakes -inc: full floating cross drilled ventilated rotors, monoblock 6-piston front & 4-piston rear calipers
- Engine mounts -inc: (2) liquid filled- Front/rear stabilizer bars
- High performance Bilstein Damptronic monotube electronically controlled shock absorbers
- Hill start assist- Independent double wishbone front suspension
- Independent multi-link rear suspension- Quad large diameter exhaust tips
- Sequential 6-speed manual dual-clutch paddle-shift, driver configurable transmission w/automatic mode
- Speed sensitive pwr rack & pinion steering



Auto Park Dallas

View this car on our website at autoparkdallas.com/7032657

Website: autoparkdallas.com

Phone: (214) 945-2601

Map: [2061 S Stemmons Fwy, Lewisville, TX 75067](#)

