

# 2019 Ford Ranger XLT

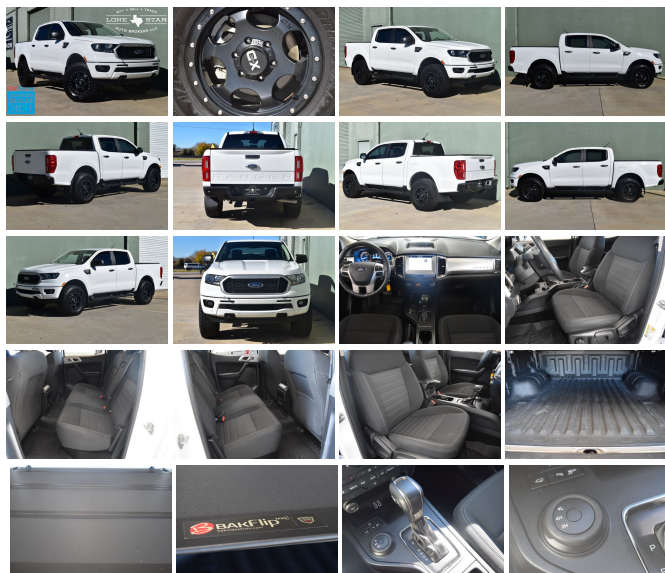
View this car on our website at [lonestarauto brokers.com/7032464/ebrochure](https://lonestarauto brokers.com/7032464/ebrochure)



Our Price **\$38,990**

## Specifications:

<b>Year:</b>	2019
<b>VIN:</b>	1FTER4FH1KLA20310
<b>Make:</b>	Ford
<b>Stock:</b>	A20310
<b>Model/Trim:</b>	Ranger XLT
<b>Condition:</b>	Pre-Owned
<b>Body:</b>	Pickup Truck
<b>Exterior:</b>	Oxford White
<b>Engine:</b>	ENGINE: 2.3L ECOBOOST
<b>Interior:</b>	Ebony Cloth
<b>Mileage:</b>	26,639
<b>Drivetrain:</b>	4 Wheel Drive
<b>Economy:</b>	City 20 / Highway 24



As always, we welcome third party inspections! We offer finance options, We take trade-ins, free airport pick up, nation-wide shipping, extended warranties, installation of additional desired items, and MUCH MORE! We are a full service dealership.

Welcome to LoneStarAutoBrokers.com! We are a family owned and operated business with 10+ years experience in the pre-owned auto industry. We hand select our vehicles from a number of sources then have them thoroughly inspected prior to listing them for sale. Please feel free to read our reviews on google. Customer satisfaction is our number one goal. Call, text, or email us today to Schedule your test drive.

## Our Location :



2019 Ford Ranger XLT

Lone Star Auto Brokers, LLC - 817-478-2100 - View this car on our website at [lonestarauto brokers.com/7032464/ebrochure](http://lonestarauto brokers.com/7032464/ebrochure)

## Installed Options

### Interior

- 3 12V DC Power Outlets- 3 12V DC Power Outlets and 1 120V AC Power Outlet
- Analog Appearance- Cloth Door Trim Insert- Compass
- Cruise Control w/Steering Wheel Controls- Day-Night Rearview Mirror
- Delayed Accessory Power- Driver Seat- Fade-To-Off Interior Lighting
- Front And Rear Map Lights- Front Center Armrest and Rear Center Armrest
- Front Cupholder
- Front Premium Cloth Bucket Seats -inc: manual 4-way adjustable driver/passenger w/manual lumbar, flow-through console and floor shifter
- Full Carpet Floor Covering -inc: Carpet Front And Rear Floor Mats - Full Cloth Headliner
- Full Folding Bench Front Facing Fold-Up Cushion Rear Seat
- Full Overhead Console w/Storage, 3 12V DC Power Outlets and 1 120V AC Power Outlet
- Gauges -inc: Speedometer, Odometer, Voltmeter, Oil Pressure, Engine Coolant Temp, Transmission Fluid Temp, Trip Odometer and Trip Computer
- HVAC -inc: Underseat Ducts
- Instrument Panel Bin, Dashboard Storage, Driver / Passenger And Rear Door Bins and 2nd Row Underseat Storage
- Interior Trim -inc: Metal-Look Instrument Panel Insert, Cabback Insulator and Chrome Interior Accents
- Locking Glove Box- Manual Air Conditioning- Manual Tilt/Telescoping Steering Column
- Manual w/Tilt Front Head Restraints and Manual Adjustable Rear Head Restraints- MyKey
- Outside Temp Gauge- Passenger Seat- Passenger Visor Vanity Mirror- Perimeter Alarm
- Pickup Cargo Box Lights- Power 1st Row Windows w/Driver 1-Touch Up/Down
- Power Door Locks w/Autolock Feature- Power Rear Windows- Rear Cupholder
- Remote Keyless Entry w/Integrated Key Transmitter, Illuminated Entry and Panic Button
- SYNC -inc: enhanced voice recognition communications and entertainment system, 911 Assist, 4.2" LCD display in center stack, AppLink, 1 smart charging USB port, FordPass connect 4G Wi-Fi modem, 4G LTE Wi-Fi hotspot connects up to 10 devices (includes a complimentary trial subscription of 3 months or 3 gigabytes - whichever comes first, Wireless service plan required after trial subscription ends, Visit [att.com/ford](http://att.com/ford) to start complimentary trial and sign up for a wireless service plan), remotely start, lock and unlock vehicle. schedule specific times to remotely start vehicle. locate parked vehicle and check

vehicle status (includes service for 1 year from the vehicle sale date as recorded by the dealer), Note: Ford Telematics and data services prep included for Fleet only: FordPass connect 4G Wi-Fi modem provides data to support telematics and data services including but not limited to vehicle location, speed, idle time, fuel, vehicle diagnostics and maintenance alerts, Device enables telematics services through Ford or authorized providers, Activate at [www.fleet.ford.com](http://www.fleet.ford.com) or call 888-FCS-FORD or 833-327-3673

- Securilock Anti-Theft Ignition (pats) Engine Immobilizer- Trip Computer
- Urethane Gear Shifter Material

---

## Exterior

- Autolamp Auto On/Off Projector Beam Halogen Auto High-Beam Daytime Running Lights Preference Setting Headlamps w/Delay-Off
- Black Door Handles- Black Grille w/Metal-Look Surround
- Black Power Side Mirrors w/Convex Spotter and Manual Folding
- Black Side Windows Trim and Black Front Windshield Trim
- Body-Colored Front Bumper w/Body-Colored Rub Strip/Fascia Accent and 2 Tow Hooks
- Body-Colored Rear Step Bumper- Body-Colored Wheel Well Trim
- Cargo Lamp w/High Mount Stop Light- Clearcoat Paint- Deep Tinted Glass
- Fixed Rear Window w/Defroster- Front Fog Lamps
- Full-Size Spare Tire Stored Underbody w/Crankdown- Galvanized Steel/Aluminum Panels
- Headlights-Automatic Highbeams- Perimeter/Approach Lights- Regular Box Style
- Steel Spare Wheel- Tailgate Rear Cargo Access
- Tailgate/Rear Door Lock Included w/Power Door Locks - Tires: P255/65R17 A/T BSW
- Variable Intermittent Wipers- Wheels: 17" Silver-Painted Aluminum

---

## Safety

- 3 12V DC Power Outlets- 3 12V DC Power Outlets and 1 120V AC Power Outlet
- Analog Appearance- Cloth Door Trim Insert- Compass
- Cruise Control w/Steering Wheel Controls- Day-Night Rearview Mirror
- Delayed Accessory Power- Driver Seat- Fade-To-Off Interior Lighting
- Front And Rear Map Lights- Front Center Armrest and Rear Center Armrest
- Front Cupholder
- Front Premium Cloth Bucket Seats -inc: manual 4-way adjustable driver/passenger w/manual lumbar, flow-through console and floor shifter
- Full Carpet Floor Covering -inc: Carpet Front And Rear Floor Mats - Full Cloth Headliner
- Full Folding Bench Front Facing Fold-Up Cushion Rear Seat
- Full Overhead Console w/Storage, 3 12V DC Power Outlets and 1 120V AC Power Outlet
- Gauges -inc: Speedometer, Odometer, Voltmeter, Oil Pressure, Engine Coolant Temp, Transmission Fluid Temp, Trip Odometer and Trip Computer
- HVAC -inc: Underseat Ducts
- Instrument Panel Bin, Dashboard Storage, Driver / Passenger And Rear Door Bins and 2nd Row Underseat Storage
- Interior Trim -inc: Metal-Look Instrument Panel Insert, Cabback Insulator and Chrome Interior Accents
- Locking Glove Box- Manual Air Conditioning- Manual Tilt/Telescoping Steering Column
- Manual w/Tilt Front Head Restraints and Manual Adjustable Rear Head Restraints- MyKey
- Outside Temp Gauge- Passenger Seat- Passenger Visor Vanity Mirror- Perimeter Alarm
- Pickup Cargo Box Lights- Power 1st Row Windows w/Driver 1-Touch Up/Down
- Power Door Locks w/Autolock Feature- Power Rear Windows- Rear Cupholder
- Remote Keyless Entry w/Integrated Key Transmitter, Illuminated Entry and Panic Button
- SYNC -inc: enhanced voice recognition communications and entertainment system, 911 Assist, 4.2" LCD display in center stack, AppLink, 1 smart charging USB port, FordPass connect 4G Wi-Fi modem, 4G LTE Wi-Fi hotspot connects up to 10 devices (includes a complimentary trial subscription of 3 months or 3 gigabytes - whichever comes first, Wireless service plan required after trial subscription ends, Visit [att.com/ford](http://att.com/ford) to start complimentary trial and sign up for a wireless service plan), remotely start, lock and unlock vehicle, schedule specific times to remotely start vehicle, locate parked vehicle and check vehicle status (includes service for 1 year from the vehicle sale date as recorded by the dealer), Note: Ford Telematics and data services prep included for Fleet only: FordPass connect 4G Wi-Fi modem provides data to support telematics and data services including but not limited to vehicle location, speed, idle time, fuel, vehicle diagnostics and maintenance alerts, Device enables telematics services through Ford or authorized providers, Activate at [www.fleet.ford.com](http://www.fleet.ford.com) or call 888-FCS-FORD or 833-327-3673
- Securilock Anti-Theft Ignition (pats) Engine Immobilizer- Trip Computer
- Urethane Gear Shifter Material

---

## Mechanical

- 150 Amp Alternator- 1560# Maximum Payload- 18 Gal. Fuel Tank
- 4-Wheel Disc Brakes w/4-Wheel ABS, Front Vented Discs, Brake Assist and Hill Hold Control
- 50-State Emissions System
- 70-Amp/Hr 700CCA Maintenance-Free Battery w/Run Down Protection
- Auto Locking Hubs- Electric Power-Assist Speed-Sensing Steering
- Electronic Transfer Case- Engine: 2.3L EcoBoost -inc: auto start-stop technology
- Front Anti-Roll Bar- GVWR: 6,050 lbs- Gas-Pressurized Shock Absorbers

- Leaf Rear Suspension w/Leaf Springs- Part-Time Four-Wheel Drive
- Short And Long Arm Front Suspension w/Coil Springs- Single Stainless Steel Exhaust
- TBD Axle Ratio- Towing Equipment -inc: Trailer Sway Control- Trailer Wiring Harness
- Transmission w/Driver Selectable Mode and SelectShift Sequential Shift Control
- Transmission: Electronic 10-Speed SelectShift Auto

## Option Packages

### Factory Installed Packages

-  
ENGINE: 2.3L ECOBOOST  
-inc: auto start-stop technology

Lone Star Auto Brokers, LLC

[lonestarautobrokers.com](http://lonestarautobrokers.com)

817-478-2100

7445 U.S. 287 Frontage Rd

Arlington, TX 76001

© 2022 AutoRevo - All rights reserved. - Powered by [AutoRevo](#)