



2018 GMC Terrain Denali

Our Price \$31,511

View this vehicle on our website at parksdeals.com

Parks Chevrolet, Inc.

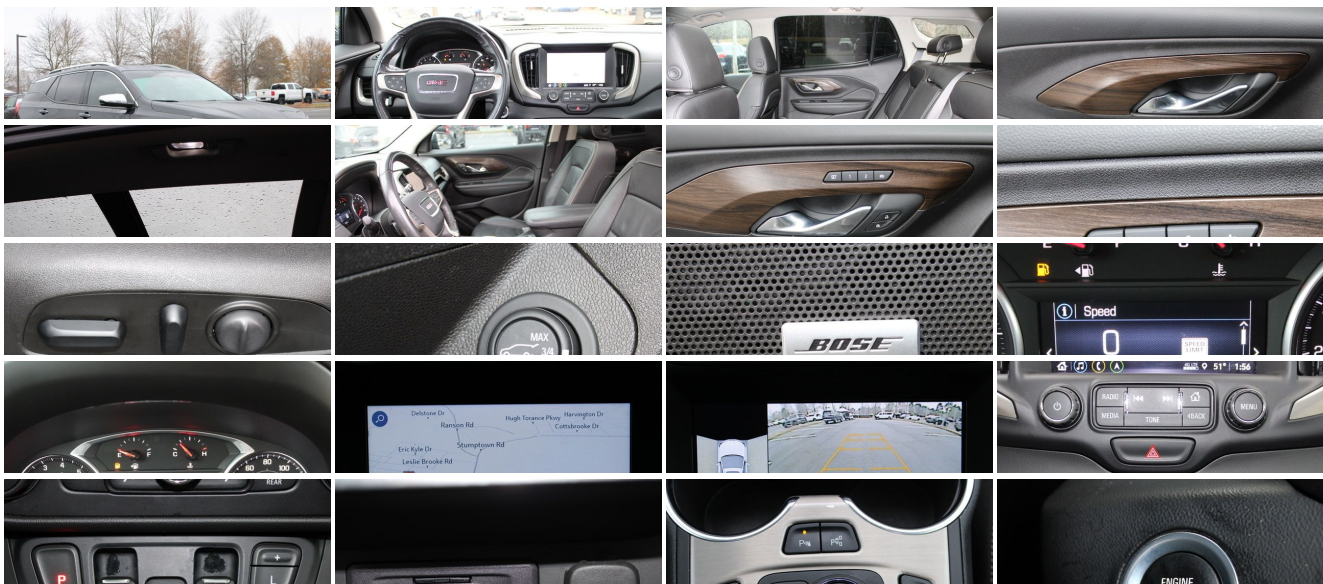
[833-825-2763](tel:833-825-2763)

615 NC-66 South, Kernersville, NC 27284

Photos

Details

Contact



Specifications:

Year:	2018
VIN:	3GKALSEX0JL315838
Make:	GMC
Stock:	3H3551
Model/Trim:	Terrain Denali
Condition:	Pre-Owned
Body:	SUV
Exterior:	Ebony Twilight Metallic
Engine:	ENGINE, 2.0L TURBO, 4-CYLINDER, SIDI, VVT
Interior:	Jet Black Leather
Mileage:	46,355
Drivetrain:	Front Wheel Drive
Economy:	City 22 / Highway 28

Vehicle Description

Certified. Certification Program Details:

2018 GMC Terrain Denali 3 Month/ 3,000 mile warranty, Advanced Safety Package, Android Auto, Apple Car play, Automatic Parking Assist, Backup Camera, Bird's Eye View Surround Vision, Bluetooth, Comfort Package, Driver Alert Package II, Following Distance Indicator, Forward Collision Alert, Heated Leather Seats, Heated Rear Outboard Seating Positions, IntelliBeam Auto High Beam Headlamp Control, Lane Keep Assist w/Lane Departure Warning, LEATHER SEATS, License Plate Front Mounting Package, Low Speed Forward Automatic Braking, Preferred Equipment Group 5SA, Push button Start, USB ports, Ventilated Driver Seat, Ventilated Front Passenger Seat, We Deliver, Wireless Charging For Devices, XM satellite radio. Clean CARFAX.

\$1000 - Dealer Trade-in Allowance (Must own and trade a 2015 or newer passenger vehicle to qualify for the Dealer Trade-in Allowance), Allowance is \$1000 above True Car Cash Offer. This offer is based on the current condition of the vehicle and must be appraised at the Dealership to receive the Trade-In Allowance. \$1000 is reflected in the vehicle discount. \$1000 - Dealer Finance Discount (Must qualify and finance with GM Financial, not available with special financing rates or programs.) You may or may not qualify for all rebates. Price does not include tax, tag, and fees. Price does not include any aftermarket products, bodies, or upfits. Price includes applicable rebates: Contact us online at www.parkschevrolethuntersville.com or give us a call at (704) 875-6558 to have your questions answered, obtain a price quote for this vehicle, or schedule your test drive today. Our prices cannot be beat! Come visit us at 15235 STATESVILLE ROAD HUNTERSVILLE NC 28078.

Installed Options

Interior

- Seats, front bucket- Seat trim, perforated leather-appointed
- Seats, heated driver and front passenger
- Seat, driver 8-way power with 2-way power lumbar- Seat, power driver lumbar control
- Seat, front passenger 6-way power with 2-way power lumbar
- Seat, front passenger power lumbar- Floor mats, carpeted front
- Floor mats, carpeted rear- Steering wheel, heated
- Driver Information Center monitors 26 various systems including, Vehicle Information Menu (oil life, tire pressure, standard/metric units) and Trip Information Menu (trip 1, trip 2, fuel range, average fuel economy, instant fuel economy, average vehicle speed) and compass display
- Window, power with driver Express-Up/Down
- Windows, power with front passenger Express-Down
- Windows, power with rear Express-Down
- Door locks, power programmable with lockout protection
- Keyless Open, includes extended range Remote Keyless Entry - Remote panic alarm
- Universal Home Remote includes garage door opener, 3-channel programmable
- Theft-deterrent system, unauthorized entry- Seating, 5-passenger
- Seatback, passenger side, flat-folding
- Head restraints, 2-way adjustable (up/down), front
- Seat, rear 60/40 split-folding with center armrest
- Seat release levers, 2nd row mechanical release levers in cargo area
- Rear Seat Reminder- Sill plates, front, Denali-specific
- Steering wheel, leather-wrapped 4-spoke
- Steering wheel controls, mounted audio and phone interface
- Speedometer, miles/kilometers- Display, 4.2" multi-color driver information screen
- Compass display, located in the Driver Information Center - Keyless Start, push-button
- Remote Start- Cruise control, electronic with set and resume speed

Option Packages

Factory Installed Packages

ENGINE, 2.0L TURBO, 4-CYLINDER, SIDI, VVT
(252 hp [188.0 kW] @ 5500 rpm, 260 lb-ft of
torque [353.0 N-m] @ 2500 - 4500 rpm)

- Air conditioning, dual-zone automatic climate control with individual climate settings for driver and right-front passenger
- Defogger, rear-window electric- Sensor, cabin humidity
- Power outlet, front auxiliary, 12-volt- Power outlet, cargo area auxiliary, 12-volt
- Power outlet, 110-volt, located on the rear of center console
- Sunglass storage, overhead- Map pocket, driver seatback
- Map pocket, front passenger seatback- Mirror, inside rearview auto-dimming
- Assist handle, driver- Assist handle, front passenger- Assist handles, rear outboard
- Lighting, interior with accent lighting under door armrest, floor console and instrument panel

Exterior

- Headlamps, automatic delay- Headlamp control, automatic on and off
- Liftgate, rear power programmable, hands free
- Wheels, 19" x 7.5 (48.3 cm x 19.1 cm) Ultra-Bright machined aluminum with Premium Gray painted accents
- Tires, P235/50R19 all-season blackwall- Tire, spare, T125/70R17 blackwall
- Mechanical jack with tools- Wheel, spare, 17" (43.2 cm) steel
- Luggage rack, side rails, roof-mounted (Bright Chrome side rails.)
- Trim, body-color lower body- Active Aero Shutters
- Headlamps, LED with C-shaped lighting- Tail lamps, LED signature
- Fog lamps, front, halogen- Glass, acoustic, laminated windshield
- Glass, deep-tinted, rear
- Mirrors, outside heated power-adjustable, manual-folding, LED turn signal indicators and auto-dimming
- Mirror caps, chrome- Door handles, body-color with chrome surround
- Active Noise Cancellation, noise control system

Safety

- Seats, front bucket- Seat trim, perforated leather-appointed
- Seats, heated driver and front passenger
- Seat, driver 8-way power with 2-way power lumbar- Seat, power driver lumbar control
- Seat, front passenger 6-way power with 2-way power lumbar
- Seat, front passenger power lumbar- Floor mats, carpeted front
- Floor mats, carpeted rear- Steering wheel, heated
- Driver Information Center monitors 26 various systems including, Vehicle Information Menu (oil life, tire pressure, standard/metric units) and Trip Information Menu (trip 1, trip 2, fuel range, average fuel economy, instant fuel economy, average vehicle speed) and compass display
- Window, power with driver Express-Up/Down
- Windows, power with front passenger Express-Down
- Windows, power with rear Express-Down
- Door locks, power programmable with lockout protection
- Keyless Open, includes extended range Remote Keyless Entry - Remote panic alarm
- Universal Home Remote includes garage door opener, 3-channel programmable
- Theft-deterrent system, unauthorized entry- Seating, 5-passenger
- Seatback, passenger side, flat-folding
- Head restraints, 2-way adjustable (up/down), front
- Seat, rear 60/40 split-folding with center armrest
- Seat release levers, 2nd row mechanical release levers in cargo area
- Rear Seat Reminder- Sill plates, front, Denali-specific
- Steering wheel, leather-wrapped 4-spoke
- Steering wheel controls, mounted audio and phone interface
- Speedometer, miles/kilometers- Display, 4.2" multi-color driver information screen
- Compass display, located in the Driver Information Center - Keyless Start, push-button
- Remote Start- Cruise control, electronic with set and resume speed
- Air conditioning, dual-zone automatic climate control with individual climate settings for driver and right-front passenger
- Defogger, rear-window electric- Sensor, cabin humidity
- Power outlet, front auxiliary, 12-volt- Power outlet, cargo area auxiliary, 12-volt
- Power outlet, 110-volt, located on the rear of center console
- Sunglass storage, overhead- Map pocket, driver seatback
- Map pocket, front passenger seatback- Mirror, inside rearview auto-dimming
- Assist handle, driver- Assist handle, front passenger- Assist handles, rear outboard
- Lighting, interior with accent lighting under door armrest, floor console and instrument panel

Mechanical

- Transmission, 9-speed automatic 9T50, electronically-controlled with overdrive
- Fuel, gasoline, E15
- Engine, 2.0L Turbo, 4-cylinder, SIDI, VVT (252 hp [188.0 kW] @ 5500 rpm, 260 lb-ft of torque [353.0 N-m] @ 2500 - 4500 rpm)

- Axle, 3.17 final drive ratio- Engine control, stop-start system
- Electronic Precision Shift, button and trigger based transmission interface
- Front wheel drive- Suspension, front MacPherson strut
- Suspension, rear 4-link, non-isolated- Suspension, Enhanced Ride
- Brakes, 4-wheel antilock, 4-wheel disc, 12.6" front and 11.3" rear
- Brake, electronic parking- Brake lining, high-performance, Duralife- Capless fuel fill
- Exhaust, dual with bright tips (Included and only available with (LTG) 2.0L Turbo 4-cylinder engine.)

Parks Chevrolet, Inc.

Parks Chevrolet, Inc.

View this car on our website at parksdeals.com/7032411

Website: parksdeals.com

Phone: [833-825-2763](tel:833-825-2763)

Map: [615 NC-66 South, Kernersville, NC 27284](#)

