



2016 Chevrolet Corvette Z06 3LZ

Website Price \$79,995

View this vehicle on our website at sdecars.com

San Diego ECARS Inc

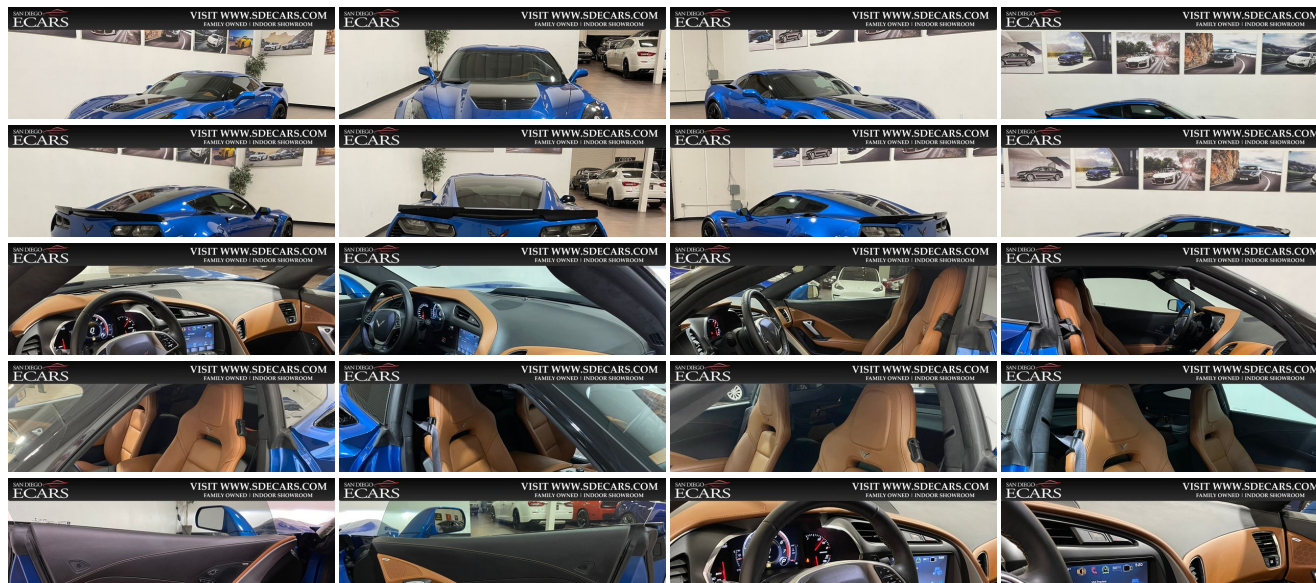
(858) 689-9900

8830 Miramar Rd , San Diego, CA 92126

Photos

Details

Contact



Specifications:

Year:	2016
VIN:	1G1YU2D60G5610617
Make:	Chevrolet
Stock:	610617
Model/Trim:	Corvette Z06 3LZ
Condition:	Pre-Owned
Body:	Coupe
Exterior:	Blue
Engine:	6.2L (376 CI) SUPERCHARGED V8 DI
Interior:	Brown Leather
Transmission:	8-SPEED PADDLE SHIFT
Mileage:	17,926
Drivetrain:	Rear Wheel Drive
Economy:	City 13 / Highway 23

Vehicle Description

2016 Chevrolet Corvette Z06 3LZ

**** 8 Speed Auto Transmission ****

**** 3LZ Package ****

**** Laguna Blue Paint ****

If you have any questions or would like to schedule an appointment to view our vehicle.

TEXT/CALL: [\(858\) 304-7060](tel:8583047060)

E-MAIL: sales@sdecars.com

Our friendly no hassle showroom is located at 8830 Miramar Rd. San Diego, CA 92126.

Personal And Business Lending Available

Please take a moment and complete our secure credit application found under the financing section of our website: www.sdecars.com. Our dealership has direct lending with top financial institutions and many credit unions to offer competitive low rates.

Please verify standard/optional equipment as we are not responsible for any advertisement errors. You are purchasing a pre-owned vehicle of which may have keys, books, or floor mats missing. Please do not hesitate to call or email if you have any questions.

Installed Options

Interior

- Console, floor 2 covered cup holders, auxiliary power outlet, USB ports, auxiliary input jack and storage
- Door locks, power programmable with lockout protection- Floor mats, carpeted
- Keyless Access with push button start and 2 remote transmitters that enable automatic door unlock and open by touching door switch
- Luggage shade
- Memory Package, recalls 2 driver "presets" for 8-way power seat, outside mirrors and tilt/telescoping steering column

Option Packages

Factory Installed Packages

ENGINE, 6.2L (376 CI) SUPERCHARGED V8 DI
(650 hp [485 kW] @ 6400 rpm, 650 lb-ft of
torque [878 N-m] @ 3600 rpm)

TRANSMISSION, 8-SPEED PADDLE SHIFT WITH AUTOMATIC
MODES

\$41,795

- Perforated Napa leather seating surfaces- Seats, GT bucket
- Steering column, power tilt and telescopic
- Theft-deterrent system, body security content and unauthorized entry electrical
- Theft-deterrent system, vehicle, push button start, immobilizer and audible visual alarm
- 3LZ interior trim seats, console, door armrests and instrument panel in interior color selected
- Air conditioning, dual-zone automatic climate control with individual climate settings for driver and dedicated passenger controls and outside temperature display
- Air filtration system with pollen filter- Cargo net
- Cruise control, electronic with set and resume speed
- Custom Leather Wrapped Interior Package features leather-wrapped upper instrument panel, upper door trim panels and console storage cover
- Defogger, rear-window, electric- Driver Information Center, color
- Hatch release, push button open
- Head-Up Display with color readouts for street mode, track mode with g-meter, vehicle speed, engine rpm
- Lighting, interior with courtesy, cargo and glovebox
- Mirror, inside rearview auto-dimming, frameless- Oil life monitoring system
- Seat adjusters, driver and passenger 8-way
- Seat adjusters, power bolster and power lumbar
- Seats, heated and vented driver and passenger
- Steering wheel controls, audio, voice recognition and Driver Information Center
- Steering wheel, 3-spoke leather-wrapped, flat-bottom
- Storage, with electric locking glovebox, behind screen storage, center console and rear compartment with cover
- Sueded Microfiber-Wrapped Upper Interior Trim Package includes headliner, visors, trim above windshield and rear window, A-pillar trim and area around quarter window
- Universal Home Remote includes garage door opener, 3-channel programmable, located on driver visor
- Visors, driver and passenger illuminated vanity mirrors
- Windows, power with driver and passenger Express-Down/Up

Exterior

- Tires, front P285/30ZR19 and rear P335/25ZR20 Michelin Pilot Super Sport summer-only, run-flat (Do not use summer only tires in winter conditions, as it would adversely affect vehicle safety, performance and durability. Use only GM-approved tire and wheel combinations. Unapproved combinations may change the vehicle's performance characteristics. For important tire and wheel information, see your dealer for a copy of the vehicle's owner's manual.)
- Wheels, Z06 Pearl Nickel-painted aluminum 19" x 10" (48.3 cm x 25.4 cm) front and 20" x 12" (50.8 cm x 30.48 cm) rear
- Carbon Flash Badge Package- Engine access, rear-opening hood
- Glass, Solar-Ray light-tinted
- Headlamps, high intensity discharge (HID), Xenon, LED park and turn signals and Daytime Running Lamps
- Mirrors, outside heated power-adjustable and driver-side auto-dimming, body- color
- Roof panel, carbon fiber, painted body-color, removable- Wipers, front intermittent

Safety

- Console, floor 2 covered cup holders, auxiliary power outlet, USB ports, auxiliary input jack and storage
- Door locks, power programmable with lockout protection- Floor mats, carpeted
- Keyless Access with push button start and 2 remote transmitters that enable automatic door unlock and open by touching door switch
- Luggage shade
- Memory Package, recalls 2 driver "presets" for 8-way power seat, outside mirrors and tilt/telescoping steering column
- Perforated Napa leather seating surfaces- Seats, GT bucket
- Steering column, power tilt and telescopic
- Theft-deterrent system, body security content and unauthorized entry electrical
- Theft-deterrent system, vehicle, push button start, immobilizer and audible visual alarm
- 3LZ interior trim seats, console, door armrests and instrument panel in interior color selected
- Air conditioning, dual-zone automatic climate control with individual climate settings for driver and dedicated passenger controls and outside temperature display
- Air filtration system with pollen filter- Cargo net
- Cruise control, electronic with set and resume speed
- Custom Leather Wrapped Interior Package features leather-wrapped upper instrument panel, upper door trim panels and console storage cover
- Defogger, rear-window, electric- Driver Information Center, color
- Hatch release, push button open
- Head-Up Display with color readouts for street mode, track mode with g-meter, vehicle speed, engine rpm
- Lighting, interior with courtesy, cargo and glovebox
- Mirror, inside rearview auto-dimming, frameless- Oil life monitoring system

Option Packages Total

\$1,725

- Seat adjusters, driver and passenger 8-way
- Seat adjusters, power bolster and power lumbar
- Seats, heated and vented driver and passenger
- Steering wheel controls, audio, voice recognition and Driver Information Center
- Steering wheel, 3-spoke leather-wrapped, flat-bottom
- Storage, with electric locking glovebox, behind screen storage, center console and rear compartment with cover
- Sueded Microfiber-Wrapped Upper Interior Trim Package includes headliner, visors, trim above windshield and rear window, A-pillar trim and area around quarter window
- Universal Home Remote includes garage door opener, 3-channel programmable, located on driver visor
- Visors, driver and passenger illuminated vanity mirrors
- Windows, power with driver and passenger Express-Down/Up

Mechanical

- Brakes, 4-wheel antilock, 4-wheel disc- Differential, electronic limited slip, rear
- Rear axle, 3.42 ratio, electronic limited slip (eLSD)
- Suspension, Performance Ride and Handling with Magnetic Selective Ride Control
- Transmission, 7-speed manual with Active Rev Matching- Calipers, Red-painted
- Cooler, rear differential- Dry sump oil system
- Engine, 6.2L (376 ci) supercharged V8 DI (650 hp [485 kW] @ 6400 rpm, 650 lb-ft of torque [878 N-m] @ 3600 rpm)
- Exhaust, performance aggressive exhaust sound, with 4" polished stainless-steel tips
- Frame, aluminum, structure- Rear wheel drive
- Steering, power, speed-sensitive rack-and-pinion, variable ratio

San Diego ECARS Inc

View this car on our website at sdecars.com/7032315

Website: sdecars.com

Phone: (858) 689-9900

Map: [8830 Miramar Rd, San Diego, CA 92126](#)



