

2002 DODGE RAM 3500 FLATBED DUMP 4X4 5.9L CUMMINS TURBO DIESEL AUTO LOW MILES!

View this car on our website at njtruckking.com/7032164/ebrochure



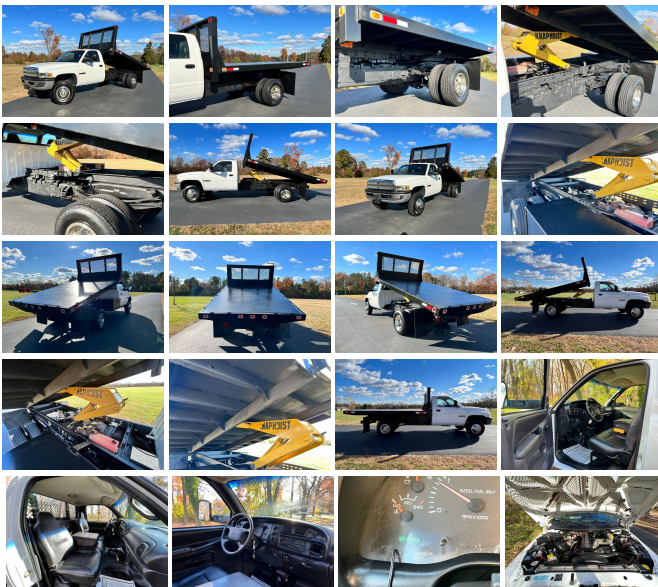
Our Price **\$29,900**

Specifications:

Year:	2002
VIN:	3B6MF36632M230021
Make:	DODGE RAM 3500
Model/Trim:	FLATBED DUMP 4X4 5.9L CUMMINS TURBO DIESEL AUTO LOW MILES!
Condition:	Pre-Owned
Body:	Pickup Truck
Exterior:	White
Engine:	5.9L (359) 24-VALVE I6 CUMMINS TURBO DIESEL ENGINE
Interior:	Gray
Mileage:	124,220
Drivetrain:	4 Wheel Drive

2002 RAM 3500 DRW 4X4
24V 5.9L CUMMINS TURBO DIESEL
AUTOMATIC TRANSMISSION
(ONLY 124,220 ORIGINAL / ACTUAL MILES)
FLAT BED DUMP
RUNS AND DRIVES EXCELLENT
READY TO WORK!
DONT MISS IT!

BUY IT NOW
\$29,900
CALL / TEXT ROB 856-381-6621 WITH ANY QUESTIONS



Our Location :



2002 DODGE RAM 3500 FLATBED DUMP 4X4 5.9L CUMMINS TURBO DIESEL AUTO LOW MILES!
King of Cars and Trucks - 856-693-3181 - View this car on our website at njtrucking.com/7032164/ebrochure

Installed Options

Interior

- Electronic AM/FM stereo radio w/cassette-inc: digital clock, (4) speakers
- HD vinyl 40/20/40 split bench seat - 2-spoke steering wheel
- Behind seat modular storage system- Black vinyl floor covering- Dash liner insulation
- Dome lamp- Fixed radio antenna- Hood insulation
- Instrument cluster-inc: 120 MPH primary speedometer, tachometer, trip odometer, oil pressure, engine temp, voltmeter
- Passenger assist handle- Pwr outlets-inc: 12-volt & cigar lighter- Storage tray
- Warning lights-inc: anti-lock brake, seat belt, airbag, check engine, low fuel/oil/washer fluid

Exterior

- Bright front bumper w/step pad- Bright grille- Cargo lamp- Clearance lamps
- Dual black 7" x 10" folding exterior mirrors - Halogen headlamps
- Tinted glass windows w/fixed rear window - Underhood lamp
- Variable intermittent windshield wipers

Safety

- Electronic AM/FM stereo radio w/cassette-inc: digital clock, (4) speakers
- HD vinyl 40/20/40 split bench seat - 2-spoke steering wheel
- Behind seat modular storage system- Black vinyl floor covering- Dash liner insulation
- Dome lamp- Fixed radio antenna- Hood insulation
- Instrument cluster-inc: 120 MPH primary speedometer, tachometer, trip odometer, oil pressure, engine temp, voltmeter
- Passenger assist handle- Pwr outlets-inc: 12-volt & cigar lighter- Storage tray
- Warning lights-inc: anti-lock brake, seat belt, airbag, check engine, low fuel/oil/washer fluid

Mechanical

- (6) LT235/85R16E all-season SBR BSW tires- 4-wheel anti-lock brakes
- 5-speed manual transmission w/OD- 5.9L (360) SMPI V8 Magnum engine
- Dual rear wheels- (4) bright wheel skins & hub centers- (6) 16" X 6" steel wheels
- 11,000# GVWR (5200 front/8000 rear), springs (5200 front/8000 rear) axles (5200 front/8000 rear)
- 136 amp alternator- 3.55 rear axle ratio- 35 gallon polyethylene fuel tank- 4-wheel drive
- 750 CCA maintenance-free battery
- Camper special group-inc: rear stabilizer bar, auxiliary rear springs
- Front Dana M60/248MM axle- Front coil springs- Front stabilizer bar
- HD Ram-Trac part-time transfer case w/shift-on-the-fly- HD engine cooling
- HD front/rear shock absorbers- Pwr front/rear disc brakes- Rear Dana M80 axle
- Stainless steel exhaust system- Steel spare wheel- Transfer case skid plate
- Variable-assist pwr steering

Option Packages

Factory Installed Packages

5.9L (359) 24-VALVE I6 CUMMINS TURBO DIESEL ENGINE	
-inc: dual 750 CCA batteries, diesel message center warning lights, "Cummins Diesel" name plates, diesel sound insulation on inner hood/dash/cowl/floor pads, engine block heater	\$4,625

Option Packages Total	\$4,625
-----------------------	---------

King of Cars and Trucks

njtruckking.com

856-693-3181

1229 Broadway

Westville, New Jersey 08093

© 2024 AutoRevo - All rights reserved. - Powered by [AutoRevo](#)