



## 2008 INFINITI G37 Sport

Website Price \$16,995

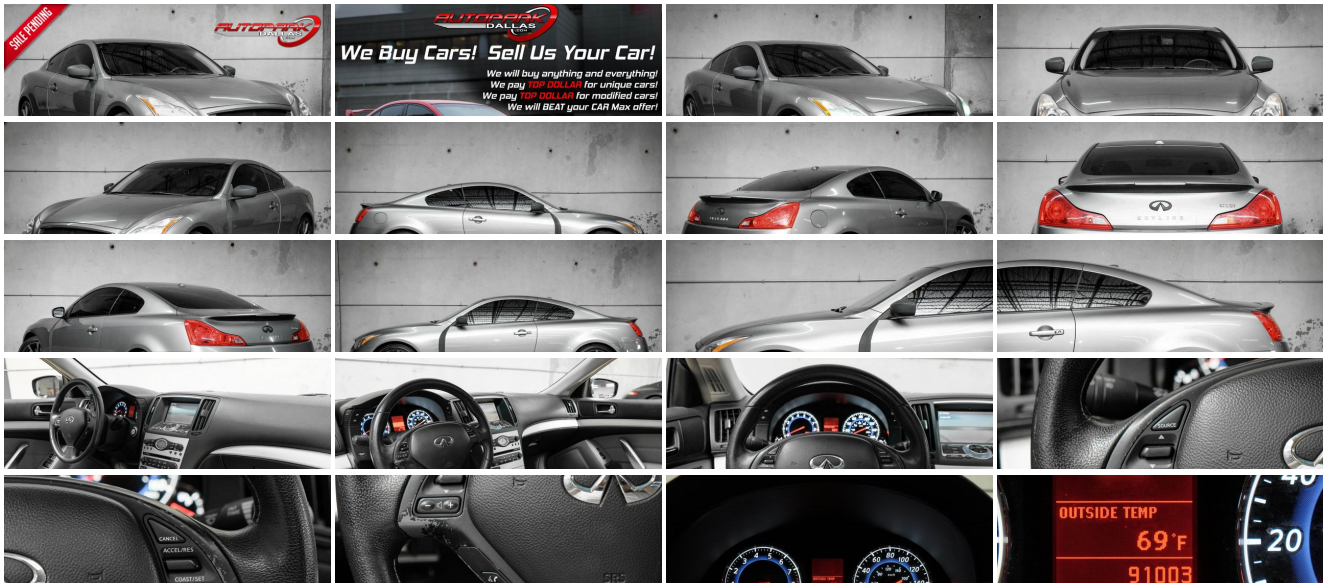
View this vehicle on our website at [autoparkdallas.com](http://autoparkdallas.com)



(214) 945-2601

2061 S Stemmons Fwy , Lewisville, TX 75067

- Photos
- Details
- Contact



## Specifications:

<b>Year:</b>	2008
<b>VIN:</b>	JNKCV64EX8M102061
<b>Make:</b>	INFINITI
<b>Model/Trim:</b>	G37 Sport
<b>Condition:</b>	Pre-Owned
<b>Body:</b>	Coupe
<b>Exterior:</b>	Platinum Graphite
<b>Engine:</b>	3.7L DOHC SMPI 24-valve V6 aluminum engine
<b>Interior:</b>	Stone Leather
<b>Mileage:</b>	91,003
<b>Drivetrain:</b>	Rear Wheel Drive
<b>Economy:</b>	City 17 / Highway 26

## Vehicle Description

AutoPark Dallas is thrilled to offer you this RARE 6-Speed Manual 2008 INFINITI G37 Coupe Sport with Premium Package for sale! The G-Series is insanely well-made and always provides amazing performance while not being overly priced like most of INFINITI's German competitors. INFINITI is always a fan favorite here at APD, even better is this G37 is a manual transmission which is hard to find and even comes with the factory "Premium Package" that gives extra comfort accessories that we always appreciate during the daily drive! Don't hesitate to come swing on by and check out this INFINITI G37 parked in our indoor 16,000 Sq Ft Showroom located in Dallas , Texas amongst our inventory of 100+ other Performance / Modified and Luxury Vehicles!

---

### 2008 INFINITI G37 Coupe Sport

\* 2 Previous Owners !\*

\* Premium Package !\*

\* Sport Package !\*

Platinum Graphite Exterior

\* Custom Matte Wrapped Rocker Panels & Front Fenders !\*

Stone Gray Leather Interior

\* STILLEN Cold-Air Intake !\*

\* NISMO Front Mesh Grille !\*

Hands Free Bluetooth

Heated Front Row Seats

Powered Moonroof

Push Button Start

Comfort Access Keyless Entry

Dual Climate Controls

Back-Up Camera w/ Guide Lines

Cruise Control

BOSE Premium Audio System

CD / AUX / USB Capable

Driver Seat Memory

Steering Wheel Mounted Controls

3.7L DOHC 24-Valve V6 Aluminum Engine

\* RARE! \* 6-Speed Manual Transmission

Rear Wheel Drive

Professionally Detailed!

Well Maintained!

\* Free CarFax Report !\*

AND SO MUCH MORE!!!

---

## Financing is available!

Check out our Payment Calculator to get an estimate on your monthly payments!

OR

Get pre-approved in no time by filling out a credit application on the 'Finance' section of our website!

We also offer MANY different Extended Warranty options!

---

Check out our Google Reviews by \*Clicking\* this LINK!

Referrals and Testimonials is what our business is built on!

---

The team here at AutoPark Dallas, is dedicated to offering a level of customer service not usually found in the automobile industry. Thanks to years of extensive car buying / selling experience, we pursue quality used and new vehicles that are hand-picked from factory sources. Our love for automobiles and dislike of traditional dealership tactics is what motivates us to provide the service we do! The pride we take in continuing this service long after the vehicle has been delivered is what we strive for! Looking forward to making every effort to see that our customer is completely satisfied and a friend for life!

Pre-purchase inspections are always welcomed!

We also offer airport pick-up, competitive financing options, free CarFax Reports, Car Shipping nationwide, Extended Warranty plans, and so much more!

Trade-In(s) are always accepted or sell us your used car (MODIFIED OR NOT)! Please call or text for more information about Trade-Ins or selling your car to us @ (214) 945-2601!

---

# #(214) 945-2601

## Call or Text **Anytime!**

## Se habla Español

# WE BUY CARS!

## WWW.AUTOPARKDALLAS.COM

### Installed Options

#### Interior

- Vehicle security system w/vehicle immobilizer- (2) 12V pwr points

### Option Packages

#### Factory Installed Packages

- (4) front/(2) rear cup holders
- AM/FM stereo w/6-disc in-dash CD/MP3 changer-inc: radio data system (RDS), (6) speakers, auxiliary audio input jack, speed-sensitive volume control, XM satellite radio
- Aluminum foot pedals
- Aluminum interior trim-inc: instrument panel, door grips, door speaker grilles
- Analog quartz clock- Carpeted floor mats- Cruise control
- Dual front map reading lamps w/sunglasses holder- Dual front seatback pockets
- Dual illuminated visor vanity mirrors w/sunvisor extenders
- Dual-zone automatic temp control w/in-cabin micro-filtration
- Folding rear bench seat w/trunk pass-through- Front door map pockets w/bottle holders
- Illuminated entry/exit system w/delayed fade-out
- Intelligent key system w/remote keyless entry, pwr trunk release, push button ignition, panic alarm
- Leather & aluminum trimmed shift knob
- Leather-wrapped tilt/telescopic sport-styled steering wheel w/cruise & audio controls
- Leather-wrapped tilt/telescopic steering wheel w/cruise & audio controls
- Lockable illuminated glove box
- Multi-function vehicle info display-inc: 7" color monitor, HVAC controls, outside temp, compass, multi-function trip computer
- Pwr door locks
- Pwr leather sport-styled front bucket seats-inc: 8-way pwr driver/passenger adjustment, manual driver lumbar, pwr access to rear seats, active headrests, thigh extensions, pwr driver thigh & torso bolsters
- Pwr windows-inc: front windows 1-touch up/down feature & safety reverse
- Rear heater vents- Rear window defroster w/timer
- Rear window in-glass diversity antenna system- Retained accessory pwr
- Tire pressure monitoring system

## Exterior

- Auto on/off high intensity discharge (HID) xenon headlamps - Body color pwr mirrors
- Chrome front grille- Integrated front fog lamps- UV-reducing glass
- Unique front fascia & side sills- Vehicle-speed-sensitive intermittent windshield wipers

## Safety

- Vehicle security system w/vehicle immobilizer- (2) 12V pwr points
- (4) front/(2) rear cup holders
- AM/FM stereo w/6-disc in-dash CD/MP3 changer-inc: radio data system (RDS), (6) speakers, auxiliary audio input jack, speed-sensitive volume control, XM satellite radio
- Aluminum foot pedals
- Aluminum interior trim-inc: instrument panel, door grips, door speaker grilles
- Analog quartz clock- Carpeted floor mats- Cruise control
- Dual front map reading lamps w/sunglasses holder- Dual front seatback pockets
- Dual illuminated visor vanity mirrors w/sunvisor extenders
- Dual-zone automatic temp control w/in-cabin micro-filtration
- Folding rear bench seat w/trunk pass-through- Front door map pockets w/bottle holders
- Illuminated entry/exit system w/delayed fade-out
- Intelligent key system w/remote keyless entry, pwr trunk release, push button ignition, panic alarm
- Leather & aluminum trimmed shift knob
- Leather-wrapped tilt/telescopic sport-styled steering wheel w/cruise & audio controls
- Leather-wrapped tilt/telescopic steering wheel w/cruise & audio controls
- Lockable illuminated glove box
- Multi-function vehicle info display-inc: 7" color monitor, HVAC controls, outside temp, compass, multi-function trip computer
- Pwr door locks
- Pwr leather sport-styled front bucket seats-inc: 8-way pwr driver/passenger adjustment, manual driver lumbar, pwr access to rear seats, active headrests, thigh extensions, pwr driver thigh & torso bolsters
- Pwr windows-inc: front windows 1-touch up/down feature & safety reverse
- Rear heater vents- Rear window defroster w/timer
- Rear window in-glass diversity antenna system- Retained accessory pwr
- Tire pressure monitoring system

## Mechanical

- 19" x 8.5" front & 19" x 9" rear aluminum-alloy wheels
- 3.7L DOHC SMPI 24-valve V6 aluminum engine
- 4-wheel anti-lock braking system (ABS)- 4-wheel vented pwr disc brakes
- 6-speed manual transmission w/OD- Continuously variable valve timing control system
- Double wishbone front suspension- Dual chrome exhaust outlets- Dual gas hood struts
- Electronic brake force distribution (EBD) w/brake assist
- Engine-speed-sensitive pwr rack & pinion steering
- Front 4-piston/rear 2-piston sport brakes- Front/rear stabilizer bars

## [P01] PREMIUM PKG

-inc: pwr sliding/tilt glass sunroof w/sunshade, auto-dimming rearview mirror w/compass, Bose premium sound system w/auxiliary audio input, 3-way component door speakers, 10" subwoofers, HomeLink universal transceiver, pwr tilt/telescopic steering wheel, driver 2-way pwr lumbar, heated front seats, heated exterior mirrors, Bluetooth hands-free phone system, driver seat, exterior mirror & steering wheel memory, digital audio link for iPod connection

\$3,200

## [C03] 50 STATE EMISSIONS

## STANDARD PAINT

## [T95] TRUNK MAT

\$100

## Option Packages Total

\$3,300

- Independent aluminum-alloy multi-link rear suspension- P225/45WR19 front tires
- P245/40WR19 rear tires- Rear wheel drive- Sport-tuned springs & shock absorbers
- Temporary use spare tire- Vehicle dynamic control (VDC)
- Viscous limited slip differential

# AUTOPARK

## Dallas

Auto Park Dallas

View this car on our website at [autoparkdallas.com/7031743](https://autoparkdallas.com/7031743)

Website: [autoparkdallas.com](https://autoparkdallas.com)

Phone: (214) 945-2601

Map: 2061 S Stemmons Fwy, Lewisville, TX 75067

