

# 2021 FORD F250 CREW 6.7L DIESEL 4X4 LARIAT LIKE NEW LOW MILES JTX WHEELS

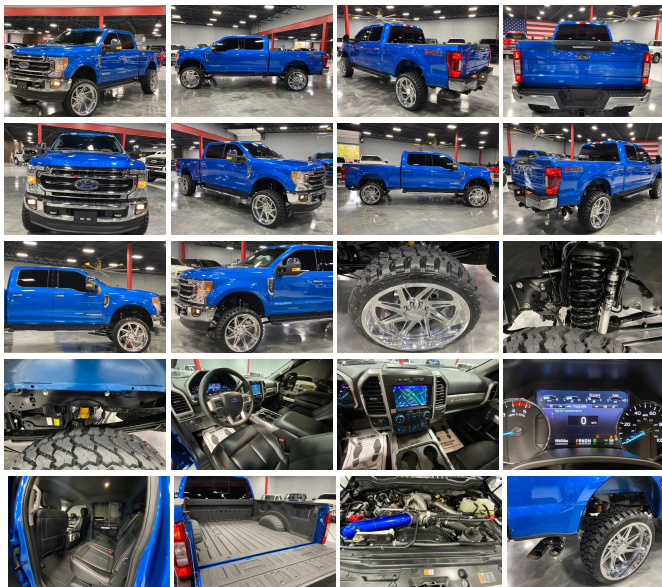
View this car on our website at [njtruckking.com/7031692/ebrochure](http://njtruckking.com/7031692/ebrochure)



Our Price **\$89,900**

## Specifications:

<b>Year:</b>	2021
<b>VIN:</b>	1FT7W2BT2MEC86152
<b>Make:</b>	FORD F250 CREW 6.7L DIESEL
<b>Model/Trim:</b>	4X4 LARIAT LIKE NEW LOW MILES JTX WHEELS
<b>Condition:</b>	Pre-Owned
<b>Body:</b>	Pickup Truck
<b>Exterior:</b>	Blue
<b>Engine:</b>	ENGINE: 6.7L 4V OHV POWER STROKE V8 TURBO DIESEL B20
<b>Interior:</b>	Black Leather
<b>Mileage:</b>	19,169
<b>Drivetrain:</b>	4 Wheel Drive



2021 FORD F250 4X4 CREW  
~LARIAT~  
6.7L POWERSTROKE TURBO DIESEL  
AUTOMATIC TRANSMISSION  
( ONLY 19,169 ORIGINAL / ACTUAL MILES )  
LIKE NEW  
SHOWROOM CONDITION  
NEW 26X12" JTX FORGED WHEELS  
NEW 35" FURY TIRES  
4" LIFT  
FOX SHOCKS  
TINTED  
BED LINER  
SHARP COLOR COMBO  
STOCK POWERTRAIN  
JUST COLD AIR INTAKE INSTALLED  
DONT MISS IT!

BUY IT NOW  
\$89,900  
CALL / TEXT ROB 856-381-6621 WITH ANY QUESTIONS

**Our Location :**



2021 FORD F250 CREW 6.7L DIESEL 4X4 LARIAT LIKE NEW LOW MILES JTX WHEELS  
King of Cars and Trucks - 856-693-3181 - View this car on our website at [njtruckking.com/7031692/ebrochure](http://njtruckking.com/7031692/ebrochure)

**Installed Options**

**Interior**

- Flow-Through Console -inc: 110V/400W outlet in rear
- Front Leather Seating Surfaces 40/Console/40 -inc: 10-way power driver and 8-way power front passenger seating (includes power lumbar) and 2-way adjustable driver/passenger headrests
- Full Carpet Floor Covering -inc: Carpet Front And Rear Floor Mats
- Gauges -inc: Speedometer, Odometer, Oil Pressure, Engine Coolant Temp, Tachometer, Transmission Fluid Temp, Engine Hour Meter, Trip Odometer and Trip Computer
- Interior Trim -inc: Metal-Look Instrument Panel Insert, Simulated Wood/Metal-Look Door Panel Insert and Chrome/Metal-Look Interior Accents
- Leather Steering Wheel- Manual Tilt/Telescoping Steering Column
- Power 1st Row Windows w/Driver And Passenger 1-Touch Up/Down
- Power Adjustable Pedals- Power Door Locks w/Autolock Feature- Power Rear Windows
- Remote Keyless Entry w/Integrated Key Transmitter, Illuminated Entry and Panic Button
- Smart Device Remote Engine Start- Trip Computer
- 110V/400W Outlet -inc: 1 in-dash mounted outlet - 2 Seatback Storage Pockets
- 60/40 Folding Split-Bench Front Facing Fold-Up Cushion Rear Seat - Air Filtration
- Cruise Control w/Steering Wheel Controls- Day-Night Auto-Dimming Rearview Mirror
- Delayed Accessory Power- Digital/Analog Appearance
- Driver And Passenger Visor Vanity Mirrors w/Driver And Passenger Illumination
- Driver Seat- Fade-To-Off Interior Lighting
- FordPass Connect 4G Mobile Hotspot Internet Access- Front And Rear Map Lights
- Front Cupholder- Full Cloth Headliner- Full Overhead Console w/Storage
- HVAC -inc: Underseat Ducts- Illuminated Locking Glove Box
- Instrument Panel Covered Bin, Dashboard Storage, Driver / Passenger And Rear Door Bins and Locking 2nd Row Underseat Storage
- Keypad- Manual Adjustable Rear Head Restraints- Outside Temp Gauge
- Passenger Seat- Perimeter Alarm- Rear Center Armrest- Rear Cupholder
- Seats w/Leatherette Back Material
- Securilock Anti-Theft Ignition (pats) Engine Immobilizer- Systems Monitor
- Underhood And Dash Glow Plug Lights- Leatherette Gear Shifter Material

**Option Packages**

**Factory Installed Packages**

ENGINE: 6.7L 4V OHV POWER STROKE V8 TURBO DIESEL B20  
-inc: manual push-button engine-exhaust braking  
and intelligent oil-life monitor, 240 Amp  
Alternator, 34 Gallon Fuel Tank, 3.31 Axle Ratio,  
Dual 78-AH 750 CCA Batteries

Option Packages Total  
\$10,495

- Underhood And Pickup Cargo Box Lights- Urethane Gear Shifter Material
- Voice Activated Dual Zone Front Automatic Air Conditioning

## Exterior

- Autolamp Auto On/Off Aero-Composite Halogen Auto High-Beam Daytime Running Lights Preference Setting Headlamps w/Delay-Off
- Chrome Front Bumper w/Body-Colored Rub Strip/Fascia Accent and 2 Tow Hooks
- Front Fog Lamps- Tailgate/Rear Door Lock Included w/Power Door Locks
- Tires: LT275/65R18E BSW A/S -inc: Spare may not be the same as road tire
- Variable Intermittent Wipers
- Wheels: 18" Bright Machined Cast Aluminum -inc: magnetic painted pockets and bright hub covers/center ornaments
- Aluminum Panels- Black Side Windows Trim and Black Front Windshield Trim
- Body-Colored Door Handles- Body-Colored Side Mirrors
- Cargo Lamp w/High Mount Stop Light- Chrome Grille- Chrome Rear Step Bumper
- Clearcoat Paint- Deep Tinted Glass- Headlights-Automatic Highbeams
- Perimeter/Approach Lights- Power Rear Window w/Defroster
- PowerScope Trailer Tow Mirrors w/Heat -inc: power-folding w/Autofold, telescoping, power glass, turn signal, high intensity LED security approach lamps and utility lighting system (LED side-mirror spotlights)
- Regular Box Style- Spare Tire Stored Underbody w/Crankdown- Steel Spare Wheel
- Tailgate Rear Cargo Access

## Safety

- Flow-Through Console -inc: 110V/400W outlet in rear
- Front Leather Seating Surfaces 40/Console/40 -inc: 10-way power driver and 8-way power front passenger seating (includes power lumbar) and 2-way adjustable driver/passenger headrests
- Full Carpet Floor Covering -inc: Carpet Front And Rear Floor Mats
- Gauges -inc: Speedometer, Odometer, Oil Pressure, Engine Coolant Temp, Tachometer, Transmission Fluid Temp, Engine Hour Meter, Trip Odometer and Trip Computer
- Interior Trim -inc: Metal-Look Instrument Panel Insert, Simulated Wood/Metal-Look Door Panel Insert and Chrome/Metal-Look Interior Accents
- Leather Steering Wheel- Manual Tilt/Telescoping Steering Column
- Power 1st Row Windows w/Driver And Passenger 1-Touch Up/Down
- Power Adjustable Pedals- Power Door Locks w/Autolock Feature- Power Rear Windows
- Remote Keyless Entry w/Integrated Key Transmitter, Illuminated Entry and Panic Button
- Smart Device Remote Engine Start- Trip Computer
- 110V/400W Outlet -inc: 1 in-dash mounted outlet - 2 Seatback Storage Pockets
- 60-40 Folding Split-Bench Front Facing Fold-Up Cushion Rear Seat - Air Filtration
- Cruise Control w/Steering Wheel Controls- Day-Night Auto-Dimming Rearview Mirror
- Delayed Accessory Power- Digital/Analog Appearance
- Driver And Passenger Visor Vanity Mirrors w/Driver And Passenger Illumination
- Driver Seat- Fade-To-Off Interior Lighting
- FordPass Connect 4G Mobile Hotspot Internet Access- Front And Rear Map Lights
- Front Cupholder- Full Cloth Headliner- Full Overhead Console w/Storage
- HVAC -inc: Underseat Ducts- Illuminated Locking Glove Box
- Instrument Panel Covered Bin, Dashboard Storage, Driver / Passenger And Rear Door Bins and Locking 2nd Row Underseat Storage
- Keypad- Manual Adjustable Rear Head Restraints- Outside Temp Gauge
- Passenger Seat- Perimeter Alarm- Rear Center Armrest- Rear Cupholder
- Seats w/Leatherette Back Material
- Securilock Anti-Theft Ignition (pats) Engine Immobilizer- Systems Monitor
- Underhood And Pickup Cargo Box Lights- Urethane Gear Shifter Material
- Voice Activated Dual Zone Front Automatic Air Conditioning

## Mechanical

- Class V Towing Equipment -inc: Hitch, Brake Controller and Trailer Sway Control
- Engine: 6.2L 2-Valve SOHC EFI NA V8 Flex-Fuel
- Transmission: TorqShift-G 6-Spd Auto w/SelectShift- 3.73 Axle Ratio- 34 Gal. Fuel Tank
- 3470# Maximum Payload
- 4-Wheel Disc Brakes w/4-Wheel ABS, Front And Rear Vented Discs, Brake Assist and Hill Hold Control
- 50-State Emissions System
- 78-Amp/Hr 750CCA Maintenance-Free Battery w/Run Down Protection
- Auto Locking Hubs- Electronic Transfer Case- Firm Suspension- Front Anti-Roll Bar
- Front Suspension w/Coil Springs- GVWR: 10,000 lb Payload Package
- HD 200 Amp Alternator- HD Shock Absorbers- Hydraulic Power-Assist Steering
- Leaf Rear Suspension w/Leaf Springs- Part-Time Four-Wheel Drive
- Single Stainless Steel Exhaust- Trailer Wiring Harness- Transmission w/Oil Cooler

---

King of Cars and Trucks

[njtrucking.com](http://njtrucking.com)

856-693-3181

1229 Broadway

Westville, New Jersey 08093

© 2024 AutoRevo - All rights reserved. - Powered by AutoRevo