



## 2015 Maserati Quattroporte S Q4

**Website Price \$42,995**

View this vehicle on our website at [sdecars.com](http://sdecars.com)

San Diego ECARS Inc

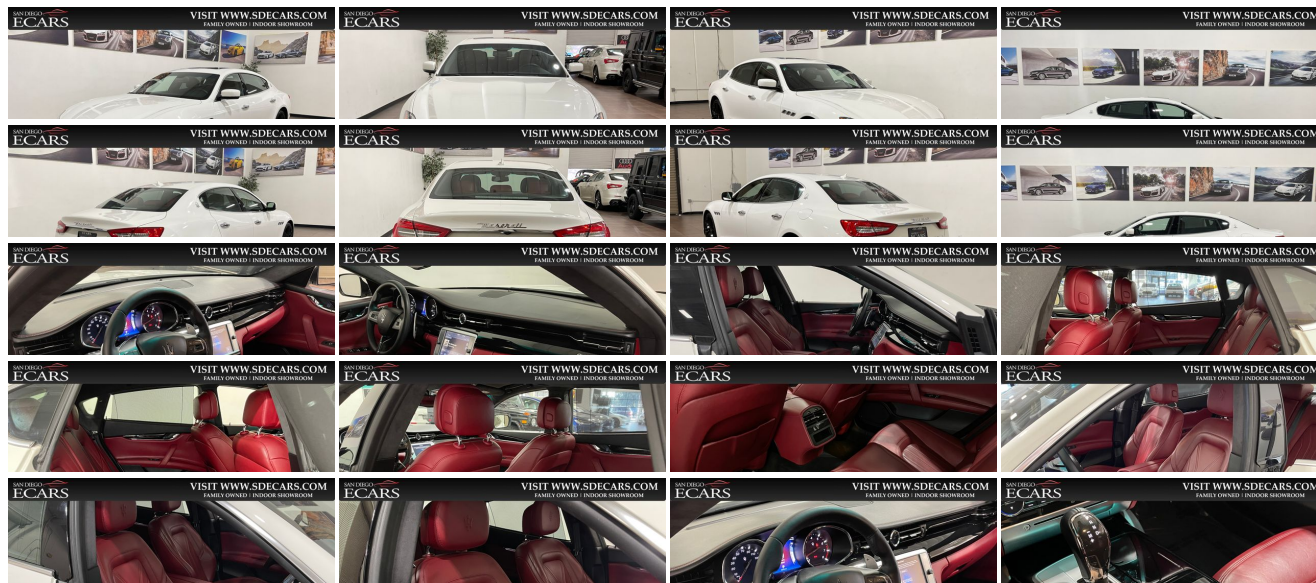
(858) 689-9900

8830 Miramar Rd , San Diego, CA 92126

Photos

Details

Contact



## Specifications:

|             |                            |
|-------------|----------------------------|
| Year:       | 2015                       |
| VIN:        | ZAM56RRA6F1138449          |
| Make:       | Maserati                   |
| Stock:      | 138449                     |
| Model/Trim: | Quattroporte S Q4          |
| Condition:  | Pre-Owned                  |
| Body:       | Sedan                      |
| Exterior:   | White                      |
| Engine:     | Engine: 3.0L Twin Turbo V6 |
| Interior:   | Red Leather                |
| Mileage:    | 42,476                     |
| Drivetrain: | All Wheel Drive            |
| Economy:    | City 15 / Highway 24       |

## Vehicle Description

### **2015 Maserati Quattroporte S Q4**

**\*\* White On Red Leather Interior \*\***

**\*\* 21" Wheel Sport Package \*\***

**\*\* Paddle Shifters \*\***

**\*\* Piano Black Gloss Trim \*\***

**\*\* New Brakes + Fresh Service \*\***

---

If you have any questions or would like to schedule an appointment to view our vehicle.

TEXT/CALL: [\(858\) 304-7060](tel:8583047060)

E-MAIL: [sales@sdecars.com](mailto:sales@sdecars.com)

Our friendly no hassle showroom is located at 8830 Miramar Rd. San Diego, CA 92126.

### **Personal And Business Lending Available**

Please take a moment and complete our secure credit application found under the financing section of our website: [www.sdecars.com](http://www.sdecars.com). Our dealership has direct lending with top financial institutions and many credit unions to offer competitive low rates.

Please verify standard/optional equipment as we are not responsible for any advertisement errors. You are purchasing a pre-owned vehicle of which may have keys, books, or floor mats missing. Please do not hesitate to call or email if you have any questions.

### **Installed Options**

#### **Interior**

- 12-Way Adjustable Heated Bucket Seats -inc: two memories for drivers seat

- Bench Front Facing Power Reclining Rear Seat w/Power Fore/Aft
- Dual Zone Front Automatic Air Conditioning
- FOB Controls -inc: Cargo Access and Remote Engine Start
- Gauges -inc: Speedometer, Odometer, Engine Coolant Temp, Tachometer, Trip Odometer and Trip Computer
- Interior Trim -inc: Deluxe Sound Insulation, Genuine Wood Instrument Panel Insert, Genuine Wood Door Panel Insert, Genuine Wood Console Insert, Chrome Interior Accents and Leather Upholstered Dashboard
- Power 1st Row Windows w/Front And Rear 1-Touch Up/Down
- Power Door Locks w/Autolock Feature- Power Rear Windows
- Proximity Key For Doors And Push Button Start
- Remote Keyless Entry w/Integrated Key Transmitter, Illuminated Entry and Panic Button
- Sport Leather Steering Wheel w/Auto Tilt-Away
- Standard Grain Leather Seat Upholstery- Trip Computer- 2 12V DC Power Outlets
- 2 Seatback Storage Pockets- Air Filtration- Analog Appearance
- Cargo Features -inc: Spare Tire Mobility Kit- Cargo Net- Cargo Space Lights
- Carpet Floor Trim and Carpet Trunk Lid/Rear Cargo Door Trim
- Cruise Control w/Steering Wheel Controls- Day-Night Auto-Dimming Rearview Mirror
- Delayed Accessory Power
- Driver And Passenger Visor Vanity Mirrors w/Driver And Passenger Illumination
- Driver Foot Rest- Driver Seat- Engine Immobilizer- Fade-To-Off Interior Lighting
- Front And Rear Map Lights
- Front Center Armrest w/Storage and Rear Center Armrest w/Storage- Front Cupholder
- Full Carpet Floor Covering- Full Cloth Headliner
- Full Floor Console w/Covered Storage, Mini Overhead Console and 2 12V DC Power Outlets
- Garage Door Transmitter
- HVAC -inc: Underseat Ducts, Residual Heat Recirculation, Headliner/Pillar Ducts and Console Ducts
- Illuminated Locking Glove Box
- Instrument Panel Covered Bin, Refrigerated/Cooled Box Located In The Console, Driver / Passenger And Rear Door Bins and 1st Row Underseat Storage
- Leather Door Trim Insert- Leather Gear Shifter Material- Mobile Hotspot Internet Access
- Outside Temp Gauge- Passenger Seat- Perimeter Alarm
- Power Anti-Whiplash Adjustable Front Head Restraints and Manual Adjustable Rear Head Restraints
- Power Fuel Flap Locking Type- Power Tilt/Telescoping Steering Column
- Rear Cupholder- Redundant Digital Speedometer
- Remote Releases -Inc: Power Cargo Access and Power Fuel- Systems Monitor
- Trunk/Hatch Auto-Latch- Valet Function

## Exterior

- Tires: P245/45R19 Front & P275/40R19 Rear AS -inc: Performance
- Wheels: 19" Tritone Alloy- Aluminum Spare Wheel- Black Grille w/Chrome Surround
- Body-Colored Front Bumper
- Body-Colored Power Heated Auto Dimming Side Mirrors w/Power Folding and Turn Signal Indicator
- Body-Colored Rear Bumper- Chrome Door Handles- Chrome Side Windows Trim
- Clearcoat Paint- Door Auto-Latch
- Express Open/Close Sliding And Tilting Glass 1st Row Sunroof w/Sunshade
- Fixed Rear Window w/Defroster- Front Fog Lamps- Front Splash Guards
- Full-Size Spare Tire Mounted Inside Under Cargo- Galvanized Steel/Aluminum Panels
- LED Brakelights- Laminated Glass- Light Tinted Glass
- Programmable Projector Beam High Intensity Low/High Beam Daytime Running Auto-Leveling Directionally Adaptive Headlamps w/Washer
- Spare Tire Mobility Kit
- Speed Sensitive Rain Detecting Variable Intermittent Wipers w/Heated Jets
- Trunk Rear Cargo Access

## Safety

- 12-Way Adjustable Heated Bucket Seats -inc: two memories for drivers seat
- Bench Front Facing Power Reclining Rear Seat w/Power Fore/Aft
- Dual Zone Front Automatic Air Conditioning
- FOB Controls -inc: Cargo Access and Remote Engine Start
- Gauges -inc: Speedometer, Odometer, Engine Coolant Temp, Tachometer, Trip Odometer and Trip Computer
- Interior Trim -inc: Deluxe Sound Insulation, Genuine Wood Instrument Panel Insert, Genuine Wood Door Panel Insert, Genuine Wood Console Insert, Chrome Interior Accents and Leather Upholstered Dashboard
- Power 1st Row Windows w/Front And Rear 1-Touch Up/Down
- Power Door Locks w/Autolock Feature- Power Rear Windows
- Proximity Key For Doors And Push Button Start
- Remote Keyless Entry w/Integrated Key Transmitter, Illuminated Entry and Panic Button

- Remote Keyless Entry w/Integrated Key Transmitter, Illuminated Entry and Panic Button
- Sport Leather Steering Wheel w/Auto Tilt-Away
- Standard Grain Leather Seat Upholstery- Trip Computer- 2 12V DC Power Outlets
- 2 Seatback Storage Pockets- Air Filtration- Analog Appearance
- Cargo Features -inc: Spare Tire Mobility Kit- Cargo Net- Cargo Space Lights
- Carpet Floor Trim and Carpet Trunk Lid/Rear Cargo Door Trim
- Cruise Control w/Steering Wheel Controls- Day-Night Auto-Dimming Rearview Mirror
- Delayed Accessory Power
- Driver And Passenger Visor Vanity Mirrors w/Driver And Passenger Illumination
- Driver Foot Rest- Driver Seat- Engine Immobilizer- Fade-To-Off Interior Lighting
- Front And Rear Map Lights
- Front Center Armrest w/Storage and Rear Center Armrest w/Storage- Front Cupholder
- Full Carpet Floor Covering- Full Cloth Headliner
- Full Floor Console w/Covered Storage, Mini Overhead Console and 2 12V DC Power Outlets
- Garage Door Transmitter
- HVAC -inc: Underseat Ducts, Residual Heat Recirculation, Headliner/Pillar Ducts and Console Ducts
- Illuminated Locking Glove Box
- Instrument Panel Covered Bin, Refrigerated/Cooled Box Located In The Console, Driver / Passenger And Rear Door Bins and 1st Row Underseat Storage
- Leather Door Trim Insert- Leather Gear Shifter Material- Mobile Hotspot Internet Access
- Outside Temp Gauge- Passenger Seat- Perimeter Alarm
- Power Anti-Whiplash Adjustable Front Head Restraints and Manual Adjustable Rear Head Restraints
- Power Fuel Flap Locking Type- Power Tilt/Telescoping Steering Column
- Rear Cupholder- Redundant Digital Speedometer
- Remote Releases -Inc: Power Cargo Access and Power Fuel- Systems Monitor
- Trunk/Hatch Auto-Latch- Valet Function

## Mechanical

- Transmission w/Driver Selectable Mode and Sequential Shift Control
- Transmission: ZF 8-Speed Automatic- 21.1 Gal. Fuel Tank
- 4-Corner Auto-Leveling Suspension
- 4-Wheel Disc Brakes w/4-Wheel ABS, Front And Rear Vented Discs, Hill Hold Control and Electric Parking Brake
- 4.10 Axle Ratio
- Automatic w/Driver Control Height Adjustable Automatic w/Driver Control Ride Control Sport Tuned Adaptive Suspension
- Double Wishbone Front Suspension w/Coil Springs
- Dual Stainless Steel Exhaust w/Chrome Tailpipe Finisher- Engine: 3.0L Twin Turbo V6
- Front And Rear Anti-Roll Bars- Full-Time All-Wheel
- Hydraulic Power-Assist Speed-Sensing Steering- Mechanical Limited Slip Differential
- Multi-Link Rear Suspension w/Coil Springs- Premium Shock Absorbers



San Diego ECARS Inc

View this car on our website at [sdecars.com/7031526](https://sdecars.com/7031526)

Website: [sdecars.com](https://sdecars.com)

Phone: (858) 689-9900

Map: [8830 Miramar Rd, San Diego, CA 92126](#)

