



## 2010 Chevrolet Corvette Z16 Grand Sport w/ CAMMED, 2LT, & Z51 Performance

**Website Price \$33,995**

View this vehicle on our website at [autoparkdallas.com](http://autoparkdallas.com)



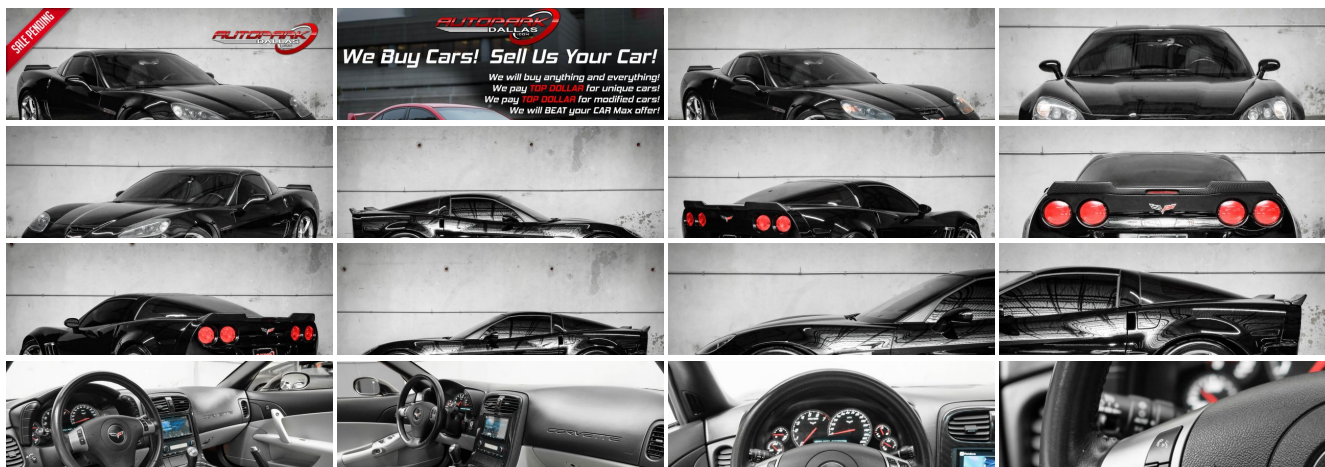
(214) 945-2601

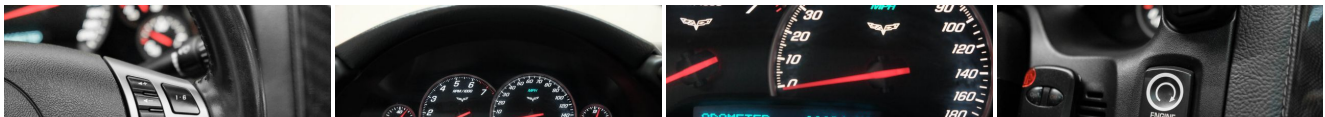
2061 S Stemmons Fwy , Lewisville, TX 75067

Photos

Details

Contact





## Specifications:

<b>Year:</b>	2010
<b>VIN:</b>	1G1YR2DW1A5109583
<b>Make:</b>	Chevrolet
<b>Model/Trim:</b>	Corvette Z16 Grand Sport w/ CAMMED, 2LT, & Z51 Performance
<b>Condition:</b>	Pre-Owned
<b>Body:</b>	Coupe
<b>Exterior:</b>	Black
<b>Engine:</b>	ENGINE, 6.2L V8 SFI
<b>Interior:</b>	Titanium Gray Leather
<b>Transmission:</b>	TRANSMISSION, 6-SPEED MANUAL, SHORT-THROW
<b>Mileage:</b>	66,624
<b>Drivetrain:</b>	Rear Wheel Drive
<b>Economy:</b>	City 15 / Highway 25

## Vehicle Description

AutoPark Dallas is excited to offer you this CAMMED 2010 Chevrolet Corvette Z16 Grand Sport with 2LT Package and MORE for sale! The American made 2-door coupe that strikes a fire in everyone's heart with a passion for speed, the desire to burn some rubber, and the competitive spirit! There is not a soul that does not recognize the style of a Corvette. Our Grand Sport here at APD comes in that classic solid Black with Aftermarket CAM & KOOKS Long Tube Headers to roar this corvette to life every time you push the start up! Don't hesitate to swing by and checks out this Grand Sport parked in our indoor 16,000 Sq Ft Showroom located in Dallas , Texas amongst our inventory of 100+ other Performance / Modified and Luxury cars!

## 2012 Chevrolet Corvette Z16 Grand Sport

\* Clean CarFax !\*

\* 2LT Package !\*

\* Z51 Performance Package !\*

## MODIFICATIONS!

KOOKS Long-Tube Stainless Steel Headers

Vararam Cold-Air Intake

Carbon Fiber C6 ZR1 Rear Spoiler

KENWOOD Stereo System

Windows Tinted

## STOCK!

Black Exterior

Black Leather Interior

Bluetooth

Navigation

Push Button Start

Comfort Access Keyless Entry

Dual Climate Controls

Cruise Control

Daytime Running Lights

BOSE Premium Audio System

CD & AUX Capable

Steering Wheel Mounted Controls

6.2L V8 SFI Engine

6-Speed Manual Transmission

Rear Wheel Drive

Professionally Detailed!

Well Maintained!

\* Free CarFax Report !\*

AND SO MUCH MORE!!!

---

## Financing is available!

Check out our Payment Calculator to get an estimate on your monthly payments!

OR

Get pre-approved in no time by filling out a credit application on the 'Finance' section of our website!

---

Check out our Google Reviews by \*Clicking\* this [LINK!](#)

Referrals and Testimonials is what our business is built on!

---

The team here at AutoPark Dallas, is dedicated to offering a level of customer service not usually found in the automobile industry. Thanks to years of extensive car buying / selling experience, we pursue quality used and new vehicles that are hand-picked from factory sources. Our love for automobiles and dislike of traditional dealership tactics is what motivates us to provide the service we do! The pride we take in continuing this service long after the vehicle has been delivered is what we strive for! Looking forward to making every effort to see that our customer is completely satisfied and a friend for life!

Pre-purchase inspections are always welcomed!

We also offer airport pick-up, competitive financing options, free CarFax Reports, Car Shipping nationwide, Extended Warranty plans, and so much more!

Trade-In(s) are always accepted or sell us your used car (MODIFIED OR NOT)! Please call or text for more information about Trade-Ins or selling your car to us @ (214) 945-2601!

---

# #(214) 945-2601

## Call or Text **Anytime!**

## Se habla Español

# WE BUY CARS!

WWW.AUTOPARKDALLAS.COM

## Installed Options

### Interior

- Air conditioning, dual-zone automatic climate control with individual climate settings for driver and right-front passenger and outside temperature display
- Air filtration system with pollen filter- Cargo net and luggage shade
- Console, floor 2 covered cup holders, ashtray with cigar lighter, auxiliary power outlet and CD storage
- Cruise control, electronic with set and resume speed - Defogger, rear-window, electric
- Door locks, power programmable with lockout protection- Floor mats, carpeted
- Hatch release, push button open with power hatch pulldown
- Instrumentation, electronic analog with Driver Information Center and 2-line display
- Keyless Access with push button start and 2 remote transmitters that enable automatic door unlock and open by touching door switch
- Lighting, interior with courtesy, cargo and glovebox
- Mirror, inside rearview auto-dimming with compass, includes dual reading lights
- Oil life monitoring system- Seat adjuster, driver 6-way power
- Seat adjuster, front passenger 6-way power
- Seat adjusters, power bolster and power lumbar
- Seats, Sport front bucket with perforated leather seating surfaces includes back angle adjustment, adjustable lumbar and side bolsters
- Steering column, Tilt-Wheel, manual- Steering wheel controls, mounted audio controls
- Steering wheel, 3-spoke leather-wrapped
- Storage, with lockable glovebox, center console and 2 rear compartments with covers (Only includes 1 rear storage compartment with manual transmission.)
- Theft-deterrent system, vehicle push button start, immobilizer and audible visual alarm
- Visors, driver and front passenger illuminated vanity mirrors
- Windows, power with driver and passenger Express-Down

### Exterior

- Tires, front P275/35ZR18 Eagle F1 Supercar extended mobility
- Tires, rear P325/30ZR19 Eagle F1 Supercar extended mobility
- Wheels, Grand Sport Silver painted aluminum 18" x 9.5" (45.7 cm x 24.1 cm) front and 19" x 12" (48.3 cm x 30.48 cm) rear
- Fog lamps, front, integral in front fascia- Glass, Solar-Ray light-tinted
- Headlamps, dual projector lamps, Xenon, High-Intensity Discharge (HID) low-beam tungsten-halogen high-beam with automatic exterior lamp control
- Mirrors, outside heated power-adjustable and driver-side auto-dimming, body- color
- Roof panel, 1-piece body-color, removable- Wipers, front intermittent

### Safety

- Air conditioning, dual-zone automatic climate control with individual climate settings for driver and right-front passenger and outside temperature display
- Air filtration system with pollen filter- Cargo net and luggage shade
- Console, floor 2 covered cup holders, ashtray with cigar lighter, auxiliary power outlet and CD storage
- Cruise control, electronic with set and resume speed - Defogger, rear-window, electric
- Door locks, power programmable with lockout protection- Floor mats, carpeted
- Hatch release, push button open with power hatch pulldown
- Instrumentation, electronic analog with Driver Information Center and 2-line display
- Keyless Access with push button start and 2 remote transmitters that enable automatic door unlock and open by touching door switch
- Lighting, interior with courtesy, cargo and glovebox
- Mirror, inside rearview auto-dimming with compass, includes dual reading lights
- Oil life monitoring system- Seat adjuster, driver 6-way power
- Seat adjuster, front passenger 6-way power
- Seat adjusters, power bolster and power lumbar
- Seats, Sport front bucket with perforated leather seating surfaces includes back angle adjustment, adjustable lumbar and side bolsters
- Steering column, Tilt-Wheel, manual- Steering wheel controls, mounted audio controls
- Steering wheel, 3-spoke leather-wrapped
- Storage, with lockable glovebox, center console and 2 rear compartments with covers (Only includes 1 rear storage compartment with manual transmission.)

## Option Packages

### Factory Installed Packages

#### ENGINE, 6.2L V8 SFI

(430 hp [320.6 kW] @ 5900 rpm, 424 lb-ft of torque [572.4 N-m] @ 4600 rpm)

#### TRANSMISSION, 6-SPEED MANUAL, SHORT-THROW

includes launch control, specific gearing and quicker ratios

#### EXHAUST, DUAL-MODE, PERFORMANCE

increases horsepower, adds 6 hp, aggressive exhaust sound **\$1,195**

#### REAR AXLE, 3.42 RATIO, LIMITED SLIP

#### EMISSIONS, FEDERAL REQUIREMENTS

#### BLACK

#### STANDARD PAINT

#### PREFERRED EQUIPMENT GROUP

includes Standard Equipment **\$1,195**

#### AUDIO SYSTEM, AM/FM STEREO WITH 6-DISC IN-DASH CD CHANGER AND MP3 PLAYBACK

seek-and-scan, digital clock, auto-tone control, Radio Data System (RDS), automatic volume, TheftLock and auxiliary input jack **\$395**

#### TITANIUM GRAY, LEATHER SEATING SURFACES

#### SEATS, SPORT FRONT BUCKET WITH PERFORATED LEATHER SEATING SURFACES

includes back angle adjustment, adjustable lumbar and side bolsters

#### WHEELS, GRAND SPORT CHROME ALUMINUM

18" x 9.5" (45.7 cm x 24.1 cm) front and 19" x 12" (48.3 cm x 30.48 cm) rear **\$1,995**

#### Option Packages Total

**\$4,780**

- Theft-deterrent system, vehicle push button start, immobilizer and audible visual alarm
- Visors, driver and front passenger illuminated vanity mirrors
- Windows, power with driver and passenger Express-Down

## Mechanical

- Brakes, 4-wheel antilock, 4-wheel disc- Engine access, rear-opening hood
- Engine, 6.2L V8 SFI (430 hp [320.6 kW] @ 5900 rpm, 424 lb-ft of torque [572.4 N-m] @ 4600 rpm)
- Exhaust, aluminized stainless-steel with 3" polished stainless-steel tips
- Rear axle, 3.42 ratio, limited slip (Included and only available with (MN6) 6-speed manual transmission.)
- Rear wheel drive- Steering, power, speed-sensitive rack-and-pinion, variable ratio
- Transmission, 6-speed manual, short-throw includes launch control, specific gearing and quicker ratios



Auto Park Dallas

View this car on our website at [autoparkdallas.com/7031120](http://autoparkdallas.com/7031120)

Website: [autoparkdallas.com](http://autoparkdallas.com)

Phone: (214) 945-2601

Map: [2061 S Stemmons Fwy, Lewisville, TX 75067](#)

