

parksdeals.com  
833-825-2763  
615 NC-66 South  
Kernersville, NC  
27284

Parks Chevrolet,  
Inc.

## 2022 Chevrolet Silverado 1500 LTD Custom

View this car on our website at [parksdeals.com/7030317/ebrochure](https://parksdeals.com/7030317/ebrochure)



Our Price **\$44,370**

Retail Value **\$45,870**

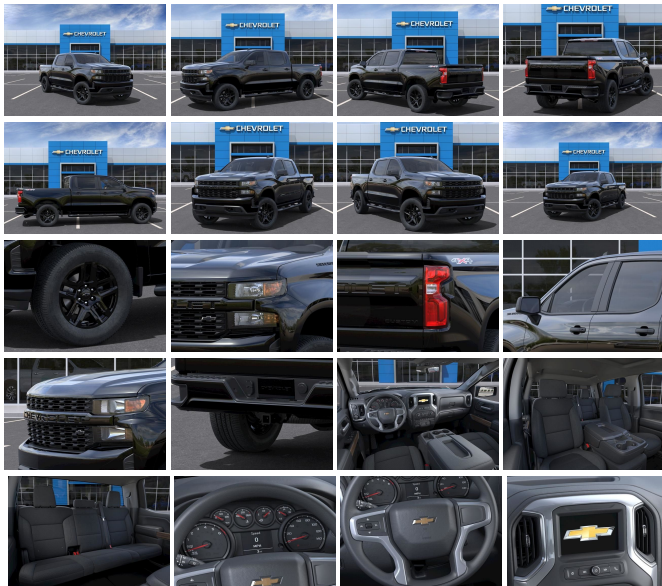
### Specifications:

**Year:** 2022  
**VIN:** 1GCPYBEK2NZ127266  
**Make:** Chevrolet  
**Stock:** 127266  
**Model/Trim:** Silverado 1500 LTD Custom  
**Condition:** New  
**Body:** Pickup Truck  
**Exterior:** Black  
**Engine:** ENGINE, 2.7L TURBO  
**Interior:** Jet Blk Clth Cloth  
**Mileage:** 0  
**Drivetrain:** 4 Wheel Drive  
**Economy:** City 17 / Highway 20

2022 Chevrolet Silverado 1500 Custom Black 2.7L Turbo 4WD 8-Speed Automatic

8-Speed Automatic, 4WD, Black Cloth, 120-Volt Bed Mounted Power Outlet, 120-Volt Instrument Panel Power Outlet, 3.5" Monochromatic Display Driver Info Center, 4" Black Round Assist Steps (LPO), 6-Speaker Audio System, Air Conditioning, Apple CarPlay/Android Auto, Black Chrome Exhaust Tip (LPO), Bluetooth?? For Phone, Body Color Grille, Chevrolet Connected Access Capable, Chevytec Spray-On Black Bedliner, Color-Keyed Carpeting Floor Covering, Custom Convenience Package, Custom Value Package, Deep-Tinted Glass, Electric Rear-Window Defogger, Electronic Cruise Control, EZ Lift Power Lock & Release Tailgate, Front Frame-Mounted Black Recovery Hooks, Front Rubberized Vinyl Floor Mats, Hitch Guidance, Infotainment Package, LED Cargo Area Lighting, Manual Tilt Wheel Steering Column, OnStar & Chevrolet Connected Services Capable, Power Door Locks, Power Front Windows w/Driver Express Up/Down, Power Front Windows w/Passenger Express Down, Power Rear Windows w/Express Down, Power steering, Power windows, Preferred Equipment Group 1CX, Radio: Chevrolet Infotainment 3 System, Rally Edition, Rear 60/40 Folding Bench Seat (Folds Up), Rear Rubberized-Vinyl Floor Mats, Rear window defroster, Remote Keyless Entry, Remote keyless entry, Remote Vehicle Starter System, SiriusXM Radio, Standard Tailgate, Theft Deterrent System (Unauthorized Entry), Trailing Package, Wheels: 20" x 9" High Gloss Black Painted Alum, Wi-Fi Hot Spot Capable.

Contact us online at [www.parkscharlotte.com](http://www.parkscharlotte.com) or give us a call at (704) 288-0662 to have your questions answered, obtain a price quote for this vehicle, or schedule your test drive today. Our prices cannot be beat! Come visit us at 8530 IKEA BLVD CHARLOTTE NC. Price excludes administrative, origination, documentary, procurement and/or other administrative fee. You may or may not qualify for all rebates. Price does not include tax, tag, and fees. Price does not include any aftermarket products, bodies, or upfits. Price includes applicable rebates:\$1000 - Costco Member Private Offer . Exp. 01/03/2022 \$500 - Chevrolet Bonus Cash Program. Exp. 01/03/2022



## Our Location :



2022 Chevrolet Silverado 1500 LTD Custom

Parks Chevrolet, Inc. - 833-825-2763 - View this car on our website at [parksdeals.com/7030317/ebrochure](https://parksdeals.com/7030317/ebrochure)

## Installed Options

### Interior

- Seats, front 40/20/40 split-bench with covered armrest storage - Seat trim, Cloth
- Seat adjuster, driver 4-way manual- Seat adjuster, passenger 4-way manual
- Seat, rear 60/40 folding bench (folds up), 3-passenger (includes child seat top tether anchor)
- Floor covering, color-keyed carpeting
- Floor mats, rubberized vinyl, front (Deleted when LPO floor liners are ordered.)
- Floor mats, rubberized-vinyl rear (Deleted when LPO floor liners are ordered.)
- Steering wheel, urethane
- Steering column, Tilt-Wheel, manual with wheel locking security feature
- Instrument cluster, 6-gauge cluster featuring speedometer, fuel level, engine temperature, tachometer, voltage and oil pressure
- Driver Information Center, 3.5" diagonal monochromatic display
- Exterior Temperature Display located in radio display
- Compass located in instrument cluster- Rear Seat Reminder
- Window, power front, drivers express up/down
- Window, power front, passenger express down- Windows, power rear, express down
- Door locks, power- Remote Keyless Entry, with 2 transmitters
- Remote vehicle starter system
- Cruise control, electronic with set and resume speed, steering wheel-mounted
- Theft-deterrent system, unauthorized entry- Power outlet, front auxiliary, 12-volt
- USB ports, 2 (first row) located on instrument panel
- Air conditioning, single-zone manual, semi-automatic- Air vents, rear, heating/cooling
- Defogger, rear-window electric- Mirror, inside rearview, manual tilt
- Assist handles front A-pillar mounted for driver and passenger, rear B-pillar mounted
- Chevrolet Connected Access capable (Subject to terms. See onstar.com or dealer for details.)

### Exterior

Wheels, 20" x 8" (50.8 cm x 20.3 cm) Black Silver-activated aluminum

- wheels, 20" x 9" (50.8 cm x 22.9 cm) Bright Silver painted aluminum
- Tires, 275/60R20 all-season, blackwall- Tire, spare 255/80R17SL all-season, blackwall
- Wheel, 17" x 8" (43.2 cm x 20.3 cm) full-size, steel spare
- Tire carrier lock, keyed cylinder lock that utilizes same key as ignition and door
- Bumper, front (Body-color.)- Bumper, rear (Body-color.)- CornerStep, rear bumper
- Recovery hooks, front, frame-mounted, Black
- Cargo tie downs (12), fixed rated at 500 lbs per corner
- Grille (Body color bars with black mesh inserts.)
- Headlamps, halogen reflector with halogen Daytime Running Lamps
- Lamps, cargo area, cab mounted integrated with center high mount stop lamp, with switch in bank on left side of steering wheel
- LED Cargo Area Lighting located in pickup bed, activated with switch on center switch bank or key fob
- Taillamps, LED with signature- Mirrors, outside heated power-adjustable
- Glass, deep-tinted- Door handles, Black- Tailgate and bed rail protection cap, top
- Tailgate, standard
- Tailgate, gate function manual with EZ Lift includes power lock and release

## Safety

- Seats, front 40/20/40 split-bench with covered armrest storage - Seat trim, Cloth
- Seat adjuster, driver 4-way manual- Seat adjuster, passenger 4-way manual
- Seat, rear 60/40 folding bench (folds up), 3-passenger (includes child seat top tether anchor)
- Floor covering, color-keyed carpeting
- Floor mats, rubberized vinyl, front (Deleted when LPO floor liners are ordered.)
- Floor mats, rubberized-vinyl rear (Deleted when LPO floor liners are ordered.)
- Steering wheel, urethane
- Steering column, Tilt-Wheel, manual with wheel locking security feature
- Instrument cluster, 6-gauge cluster featuring speedometer, fuel level, engine temperature, tachometer, voltage and oil pressure
- Driver Information Center, 3.5" diagonal monochromatic display
- Exterior Temperature Display located in radio display
- Compass located in instrument cluster- Rear Seat Reminder
- Window, power front, drivers express up/down
- Window, power front, passenger express down- Windows, power rear, express down
- Door locks, power- Remote Keyless Entry, with 2 transmitters
- Remote vehicle starter system
- Cruise control, electronic with set and resume speed, steering wheel-mounted
- Theft-deterrent system, unauthorized entry- Power outlet, front auxiliary, 12-volt
- USB ports, 2 (first row) located on instrument panel
- Air conditioning, single-zone manual, semi-automatic- Air vents, rear, heating/cooling
- Defogger, rear-window electric- Mirror, inside rearview, manual tilt
- Assist handles front A-pillar mounted for driver and passenger, rear B-pillar mounted
- Chevrolet Connected Access capable (Subject to terms. See onstar.com or dealer for details.)

## Mechanical

- Steering, Electric Power Steering (EPS) assist, rack-and-pinion
- Brakes, 4-wheel antilock, 4-wheel disc with DURALIFE rotors- Brake lining wear indicator
- Capless Fuel Fill- Exhaust, single outlet- Frame, fully-boxed, hydroformed front section
- Alternator, 220 amps
- Battery, heavy-duty 730 cold-cranking amps/80 Amp-hr, maintenance-free with rundown protection and retained accessory power
- Four wheel drive
- Transfer case, single speed electronic Autotrac with push button control (4WD models only)
- Automatic Stop/Start
- GVWR, 7000 lbs. (3175 kg) (Requires Crew Cab or Double Cab 4WD model and (L3B) 2.7L Turbo engine.)
- Durabed, pickup bed- Rear axle, 3.42 ratio
- Transmission, 8-speed automatic, electronically controlled with overdrive and tow/haul mode. Includes Cruise Grade Braking and Powertrain Grade Braking
- Engine, 2.7L Turbo (310 hp [231 kW] @ 5600 rpm, 348 lb-ft of torque [471 Nm] @ 1500 rpm)

## Option Packages

### Factory Installed Packages

ENGINE, 2.7L TURBO  
(310 hp [231 kW] @ 5600 rpm,

348 lb-ft of torque [471 Nm] @  
1500 rpm

---

Parks Chevrolet, Inc.  
[parksdeals.com](http://parksdeals.com)  
833-825-2763  
615 NC-66 South  
Kernersville, NC 27284

© 2022 AutoRevo - All rights reserved. - Powered by AutoRevo