

parksdeals.com
833-825-2763
615 NC-66 South
Kernersville, NC
27284

Parks Chevrolet,
Inc.

2022 Chevrolet Silverado 1500 LTD Custom

View this car on our website at parksdeals.com/7029855/ebrochure



Our Price **\$40,749**

Retail Value **\$42,995**

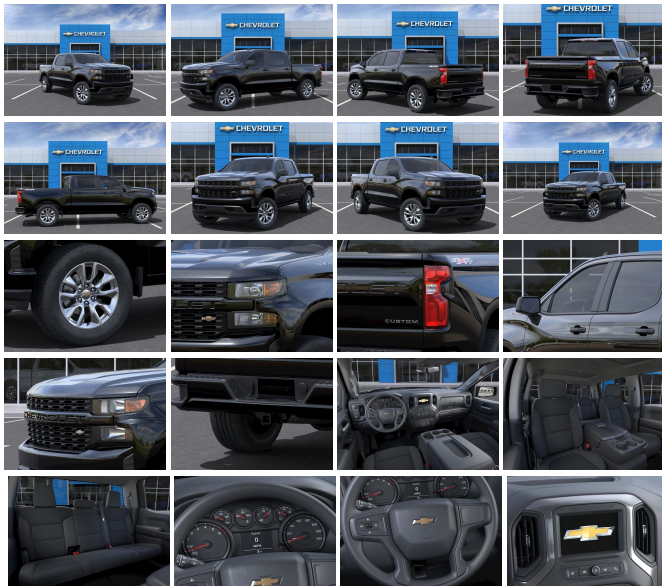
Specifications:

Year:	2022
VIN:	1GCPYBEK5NZ131831
Make:	Chevrolet
Stock:	131831
Model/Trim:	Silverado 1500 LTD Custom
Condition:	New
Body:	Pickup Truck
Exterior:	Black
Engine:	ENGINE, 2.7L TURBO
Interior:	Jet Blk Clth Cloth
Mileage:	0
Drivetrain:	4 Wheel Drive
Economy:	City 17 / Highway 20

2022 Chevrolet Silverado 1500 Custom Black 2.7L Turbo 4WD 8-Speed Automatic

8-Speed Automatic, 4WD, Black Cloth, 3.5" Monochromatic Display Driver Info Center, 6-Speaker Audio System, Air Conditioning, Apple CarPlay/Android Auto, Bluetooth?? For Phone, Body Color Grille, Chevrolet Connected Access Capable, Color-Keyed Carpeting Floor Covering, Custom Convenience Package, Custom Value Package, Deep-Tinted Glass, Electric Rear-Window Defogger, Electronic Cruise Control, EZ Lift Power Lock & Release Tailgate, Front Frame-Mounted Black Recovery Hooks, Front Rubberized Vinyl Floor Mats, Hitch Guidance, Infotainment Package, LED Cargo Area Lighting, Manual Tilt Wheel Steering Column, OnStar & Chevrolet Connected Services Capable, Power Door Locks, Power Front Windows w/Driver Express Up/Down, Power Front Windows w/Passenger Express Down, Power Rear Windows w/Express Down, Power steering, Power windows, Preferred Equipment Group 1CX, Radio: Chevrolet Infotainment 3 System, Rear 60/40 Folding Bench Seat (Folds Up), Rear Rubberized-Vinyl Floor Mats, Rear window defroster, Remote Keyless Entry, Remote keyless entry, Remote Vehicle Starter System, SiriusXM Radio, Standard Tailgate, Theft Deterrent System (Unauthorized Entry), Trailing Package, Wi-Fi Hot Spot Capable.

Contact us online at www.parkscharlotte.com or give us a call at (704) 288-0662 to have your questions answered, obtain a price quote for this vehicle, or schedule your test drive today. Our prices cannot be beat! Come visit us at 8530 IKEA BLVD CHARLOTTE NC. Price excludes administrative, origination, documentary, procurement and/or other administrative fee. You may or may not qualify for all rebates. Price does not include tax, tag, and fees. Price does not include any aftermarket products, bodies, or upfits. Price includes applicable rebates:\$500 - Purchase Bonus Cash. Exp. 04/04/2022



2022 Chevrolet Silverado 1500 LTD Custom

Parks Chevrolet, Inc. - 833-825-2763 - View this car on our website at parksdeals.com/7029855/ebrochure

Vehicle History Report : as Of 04/17/2024



Snapshot

2022 CHEVROLET SILVERADO 1500 LIMITED CUSTOM



No accidents or damage reported to CARFAX



1 Service history record



CARFAX 1-Owner vehicle



Personal vehicle



5 Detailed records available



202 Last reported odometer reading



FREE CARFAX Report

See the full CARFAX Report for additional information

*carfax Snapshot is a reflection of available information on the date the report was pulled. carfax is constantly being updated with new information and is subject to change at any time.

Our Location :



2022 Chevrolet Silverado 1500 LTD Custom

Parks Chevrolet, Inc. - 833-825-2763 - View this car on our website at parksdeals.com/7029855/ebrochure

Installed Options

Interior

- Seats, front 40/20/40 split-bench with covered armrest storage - Seat trim, Cloth
- Seat, rear 60/40 folding bench (folds up), 3-passenger (includes child seat top tether anchor)
- Floor mats, rubberized vinyl, front (Deleted when LPO floor liners are ordered.)
- Floor mats, rubberized-vinyl rear (Deleted when LPO floor liners are ordered.)
- Window, power front, passenger express down- Windows, power rear, express down
- Door locks, power- Remote Keyless Entry, with 2 transmitters
- Remote vehicle starter system- Theft-deterrent system, unauthorized entry
- USB ports, 2 (first row) located on instrument panel
- Air conditioning, single-zone manual, semi-automatic- Air vents, rear, heating/cooling
- Defogger, rear-window electric- Seat adjuster, driver 4-way manual
- Seat adjuster, passenger 4-way manual- Floor covering, color-keyed carpeting
- Steering wheel, urethane
- Steering column, Tilt-Wheel, manual with wheel locking security feature
- Instrument cluster, 6-gauge cluster featuring speedometer, fuel level, engine temperature, tachometer, voltage and oil pressure
- Driver Information Center, 3.5" diagonal monochromatic display
- Exterior Temperature Display located in radio display

Option Packages

Factory Installed Packages

ENGINE, 2.7L TURBO

(310 hp [231 kW] @ 5600 rpm, 348 lb-ft of torque
[471 Nm] @ 1500 rpm)

- Compass located in instrument cluster- Rear Seat Reminder
- Window, power front, drivers express up/down
- Cruise control, electronic with set and resume speed, steering wheel-mounted
- Power outlet, front auxiliary, 12-volt- Mirror, inside rearview, manual tilt
- Assist handles front A-pillar mounted for driver and passenger, rear B-pillar mounted
- Chevrolet Connected Access capable (Subject to terms. See onstar.com or dealer for details.)

Exterior

- Wheels, 20" x 9" (50.8 cm x 22.9 cm) Bright Silver painted aluminum
- Tires, 275/60R20 all-season, blackwall- Tire, spare 255/80R17SL all-season, blackwall
- Headlamps, halogen reflector with halogen Daytime Running Lamps
- Wheel, 17" x 8" (43.2 cm x 20.3 cm) full-size, steel spare
- Tire carrier lock, keyed cylinder lock that utilizes same key as ignition and door
- Bumper, front (Body-color.)- Bumper, rear (Body-color.)- CornerStep, rear bumper
- Recovery hooks, front, frame-mounted, Black
- Cargo tie downs (12), fixed rated at 500 lbs per corner
- Grille (Body color bars with black mesh inserts.)
- Lamps, cargo area, cab mounted integrated with center high mount stop lamp, with switch in bank on left side of steering wheel
- LED Cargo Area Lighting located in pickup bed, activated with switch on center switch bank or key fob
- Taillamps, LED with signature- Mirrors, outside heated power-adjustable
- Glass, deep-tinted- Door handles, Black- Tailgate and bed rail protection cap, top
- Tailgate, standard
- Tailgate, gate function manual with EZ Lift includes power lock and release

Safety

- Seats, front 40/20/40 split-bench with covered armrest storage - Seat trim, Cloth
- Seat, rear 60/40 folding bench (folds up), 3-passenger (includes child seat top tether anchor)
- Floor mats, rubberized vinyl, front (Deleted when LPO floor liners are ordered.)
- Floor mats, rubberized-vinyl rear (Deleted when LPO floor liners are ordered.)
- Window, power front, passenger express down- Windows, power rear, express down
- Door locks, power- Remote Keyless Entry, with 2 transmitters
- Remote vehicle starter system- Theft-deterrent system, unauthorized entry
- USB ports, 2 (first row) located on instrument panel
- Air conditioning, single-zone manual, semi-automatic- Air vents, rear, heating/cooling
- Defogger, rear-window electric- Seat adjuster, driver 4-way manual
- Seat adjuster, passenger 4-way manual- Floor covering, color-keyed carpeting
- Steering wheel, urethane
- Steering column, Tilt-Wheel, manual with wheel locking security feature
- Instrument cluster, 6-gauge cluster featuring speedometer, fuel level, engine temperature, tachometer, voltage and oil pressure
- Driver Information Center, 3.5" diagonal monochromatic display
- Exterior Temperature Display located in radio display
- Compass located in instrument cluster- Rear Seat Reminder
- Window, power front, drivers express up/down
- Cruise control, electronic with set and resume speed, steering wheel-mounted
- Power outlet, front auxiliary, 12-volt- Mirror, inside rearview, manual tilt
- Assist handles front A-pillar mounted for driver and passenger, rear B-pillar mounted
- Chevrolet Connected Access capable (Subject to terms. See onstar.com or dealer for details.)

Mechanical

- Transmission, 8-speed automatic, electronically controlled with overdrive and tow/haul mode. Includes Cruise Grade Braking and Powertrain Grade Braking
- Engine, 2.7L Turbo (310 hp [231 kW] @ 5600 rpm, 348 lb-ft of torque [471 Nm] @ 1500 rpm)
- Rear axle, 3.42 ratio- Durabed, pickup bed
- GVWR, 7000 lbs. (3175 kg) (Requires Crew Cab or Double Cab 4WD model and (L3B) 2.7L Turbo engine.)
- Automatic Stop/Start
- Transfer case, single speed electronic Autotrac with push button control (4WD models only)
- Four wheel drive
- Battery, heavy-duty 730 cold-cranking amps/80 Amp-hr, maintenance-free with rundown protection and retained accessory power
- Alternator, 220 amps- Frame, fully-boxed, hydroformed front section
- Steering, Electric Power Steering (EPS) assist, rack-and-pinion
- Brakes, 4-wheel antilock, 4-wheel disc with DURALIFE rotors- Brake lining wear indicator
- Capless Fuel Fill- Exhaust, single outlet

Parks Chevrolet, Inc.

parksdeals.com

833-825-2763

615 NC-66 South

Kernersville, NC 27284

© 2024 AutoRevo - All rights reserved. - Powered by [AutoRevo](#)