



2008 Mercedes-Benz E350 3rd row Seat

Website Price \$13,495

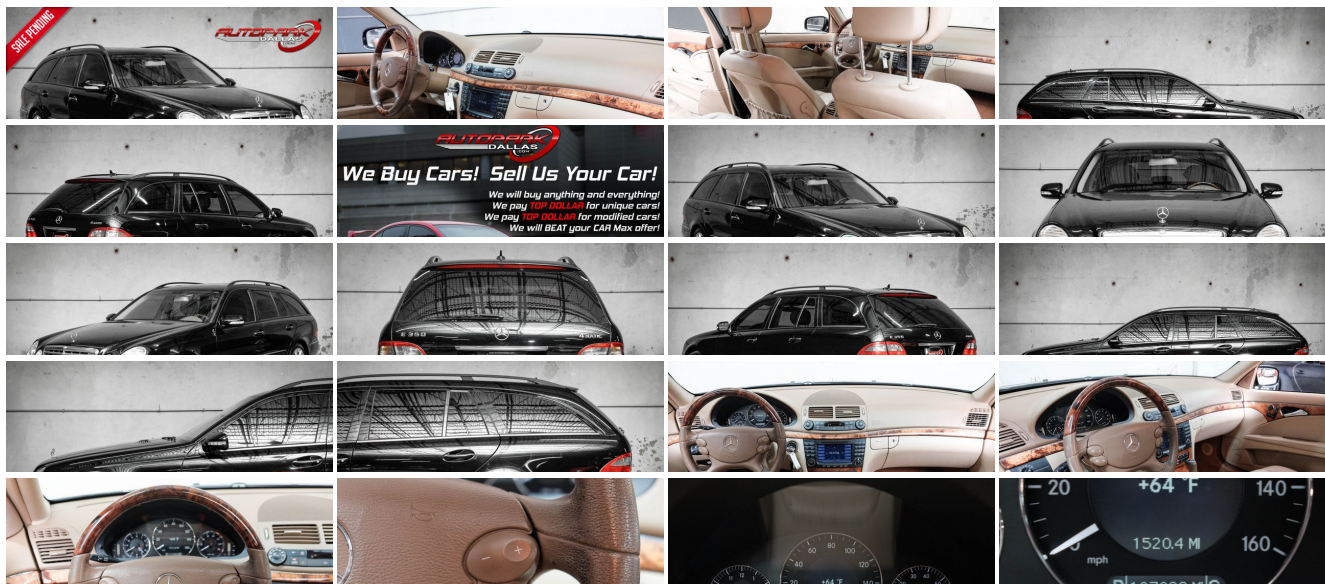
View this vehicle on our website at autoparkdallas.com



(214) 945-2601

2061 S Stemmons Fwy , Lewisville, TX 75067

Photos
Details
Contact



Specifications:

Year:	2008
VIN:	WDBUH87X98B277644
Make:	Mercedes-Benz
Model/Trim:	E350 3rd row Seat
Condition:	Pre-Owned
Body:	Wagon
Exterior:	Black
Engine:	3.5L DOHC 24-valve V6 engine
Interior:	Cashmere Leather
Transmission:	5-speed automatic electronically controlled driver-adaptive transmission
Mileage:	107,988
Drivetrain:	All Wheel Drive
Economy:	City 16 / Highway 21

Vehicle Description

AutoPark Dallas is thrilled to offer you this 2008 Mercedes-Benz E 350 Wagon with Premium Package for sale! When you think German engineering you thoughts are Mercedes-Benz instantly, with this E 350 Luxury Wagon there isn't any neglect to the high-end luxury desired! From the sharp look to the comfortable cabin, this Benz comes powered by a 3.5L DOHC 24-valve V6 engine that'll take you from A to B in style with the Mercedes name. Come check out this E-class Wagon parked here in our indoor 16,000 Sq Ft Showroom located in Dallas , Texas amongst our inventory of 100+ other Unique / Modified and Luxury vehicles!

2008 Mercedes Benz E 350

*** Clean CarFax !***

*** Premium Package 1 !***

3rd ROW SEATS (RARE!!!)

Black Exterior

Cashmere Leather Interior

Navigation

Heated Front Row Seats

Powered Sunroof

In-Dash 6-Disc CD Changer

Cruise Control

Dual Climate Control

Daytime Running Lights

Harmon/Kardon Sound System

Steering Wheel Mounted Controls

3.5L DOHC 24-Valve V6 Engine

5-Speed Automatic Transmission

All Wheel Drive

Professionally Detailed!

Well Maintained!

*** Free CarFax Report !***

AND SO MUCH MORE!!!

Financing is available!

Check out our Payment Calculator to get an estimate on your monthly payments!

OR

Get pre-approved in no time by filling out a credit application on the 'Finance' section of our website!

We also offer MANY different Extended Warranty options!

Check out our Google Reviews by *Clicking* this LINK!

Referrals and Testimonials is what our business is built on!

The team here at AutoPark Dallas, is dedicated to offering a level of customer service not usually found in the automobile industry. Thanks to years of extensive car buying / selling experience, we pursue quality used and new vehicles that are hand-picked from factory sources. Our love for automobiles and dislike of traditional dealership tactics is what motivates us to provide the service we do! The pride we take in continuing this service long after the vehicle has been delivered is what we strive for! Looking forward to making every effort to see that our customer is completely satisfied and a friend for life!

Pre-purchase inspections are always welcomed!

We also offer airport pick-up, competitive financing options, free CarFax Reports, Car Shipping nationwide, Extended Warranty plans, and so much more!

Trade-In(s) are always accepted or sell us your used car (MODIFIED OR NOT)! Please call or text for more information about Trade-Ins or selling your car to us @ (214) 945-2601!

#(214) 945-2601

Call or Text **Anytime!**

Se habla Español

WE BUY CARS!

WWW.AUTOPARKDALLAS.COM

Installed Options

Interior

- MB-Tex upholstery
- 10-way pwr front bucket seats-inc: 3-position memory, adjustable lumbar support, pwr active head restraints
- 4-way pwr tilt/telescopic steering column w/memory, programmable easy-exit feature
- 60/40-split-folding 2nd row seatbacks w/flip forward seat cushions
- Audio auxiliary input jack in glovebox - Auto-dimming rearview mirror
- Automatic dual-zone climate control-inc: electrostatic dust & pollen filters, humidity & dew point sensors, tunnel mode w/1-touch closing of all windows
- Burl Walnut wood trim
- COMAND cockpit management & data system-inc: AM/FM/Weatherband radio, integrated MP3 compatible 6-disc CD changer, large color LCD screen, (10) soft keys, fiber-optic communication among components
- Cargo area & cabin 12V pwr outlets- Cruise control
- Driver/passenger illuminated visor mirrors

Option Packages

Factory Installed Packages

PREMIUM PKG 1

-inc: hands-free communication system, DVD navigation, Sirius satellite radio, rear side window blinds, heated front seats

\$2,410

WOOD & LEATHER STEERING WHEEL

\$550

STANDARD PAINT

LEATHER UPHOLSTERY

\$1,550

\$1,550

Option Packages Total

\$4,510

- Driver/passenger illuminated visor mirrors
- Electrically heated rear window w/auto shut off based on time & driving speed & exterior temp
- Folding rear facing 3rd row seats- Front reading lamps- Front/rear floor mats
- Harman/kardon LOGIC7 digital surround sound system
- Illuminated entry system w/locator lighting
- Instrumentation-inc: fuel & coolant temp electronic bar-graph, tachometer, quartz clock
- Integrated HomeLink compatible (3) button garage door opener
- Leather-trimmed shift knob
- Leather-trimmed steering wheel w/audio & multi-function display controls
- Mercedes-Benz Maintenance System Plus display
- Multi-function display in instrument cluster-inc: trip computer, exterior temp gauge, digital speedometer, audio status, reminder & malfunction indicator, driver-programmable settings, trip meter
- Night security illumination- Pwr door locks w/drive away locking- Pwr tailgate
- Pwr windows w/1-touch express down & up
- SmartKey infrared remote-inc: tailgate open, closing windows & sunroof open/close, panic alarm, fuel filler door, selective unlock
- Tele Aid global positioning system (GPS) satellite system-inc: stolen vehicle recovery, remote door unlock service, automatic alarm & collision notification
- Tire pressure monitor

Exterior

- Front halogen foglamps- Intermittent rear wiper w/washer system
- Programmable daytime running lamps w/auto override
- Pwr heated mirrors-inc: memory, auto-dimming driver mirror
- Pwr tilt/slide tinted glass sunroof w/1-touch express open/close, memory
- Rain-sensing windshield wipers w/heated windshield washer reservoir - Roof rails
- Single red rear foglamp
- Variable-focus halogen headlamps-inc: projector low beams, selectable light- sensing headlamps

Safety

- MB-Tex upholstery
- 10-way pwr front bucket seats-inc: 3-position memory, adjustable lumbar support, pwr active head restraints
- 4-way pwr tilt/telescopic steering column w/memory, programmable easy-exit feature
- 60/40-split-folding 2nd row seatbacks w/flip forward seat cushions
- Audio auxliary input jack in glovebox - Auto-dimming rearview mirror
- Automatic dual-zone climate control-inc: electrostatic dust & pollen filters, humidity & dew point sensors, tunnel mode w/1-touch closing of all windows
- Burl Walnut wood trim
- COMAND cockpit management & data system-inc: AM/FM/Weatherband radio, integrated MP3 compatible 6-disc CD changer, large color LCD screen, (10) soft keys, fiber-optic communication among components
- Cargo area & cabin 12V pwr outlets- Cruise control
- Driver/passenger illuminated visor mirrors
- Electrically heated rear window w/auto shut off based on time & driving speed & exterior temp
- Folding rear facing 3rd row seats- Front reading lamps- Front/rear floor mats
- Harman/kardon LOGIC7 digital surround sound system
- Illuminated entry system w/locator lighting
- Instrumentation-inc: fuel & coolant temp electronic bar-graph, tachometer, quartz clock
- Integrated HomeLink compatible (3) button garage door opener
- Leather-trimmed shift knob
- Leather-trimmed steering wheel w/audio & multi-function display controls
- Mercedes-Benz Maintenance System Plus display
- Multi-function display in instrument cluster-inc: trip computer, exterior temp gauge, digital speedometer, audio status, reminder & malfunction indicator, driver-programmable settings, trip meter
- Night security illumination- Pwr door locks w/drive away locking- Pwr tailgate
- Pwr windows w/1-touch express down & up
- SmartKey infrared remote-inc: tailgate open, closing windows & sunroof open/close, panic alarm, fuel filler door, selective unlock
- Tele Aid global positioning system (GPS) satellite system-inc: stolen vehicle recovery, remote door unlock service, automatic alarm & collision notification
- Tire pressure monitor

Mechanical

- 17" x 8.0" 7-spoke aluminum wheels - 3.5L DOHC 24-valve V6 engine
- 4-wheel anti-lock disc brakes system (ABS) w/brake assist system
- 4-wheel electronic traction system (4-ETS)- 4-wheel ventilated pwr disc brakes
- 4MATIC permanent all-wheel drive
- 5 speed automatic electronically controlled drive adaptive transmission

- 5-speed automatic electronically controlled driver-adaptive transmission
- Airmatic rear suspension w/automatic level control- Compact spare tire
- Electronic stability program (ESP)- Front coil springs over gas shock absorbers
- Front/rear stabilizer bars
- Independent double wishbone front & 5-arm multi-link rear suspension
- P245/45R17 all-season performance tires
- Vehicle-speed-sensitive pwr rack & pinion steering

AUTOPARK

Dallas

Auto Park Dallas

View this car on our website at autoparkdallas.com/7029524

Website: autoparkdallas.com

Phone: (214) 945-2601

Map: [2061 S Stemmons Fwy, Lewisville, TX 75067](#)

