

# 2021 Jeep Wrangler Unlimited Sport 4X4 DIESEL,DUPONT KEVLAR,LIFTED,NAV

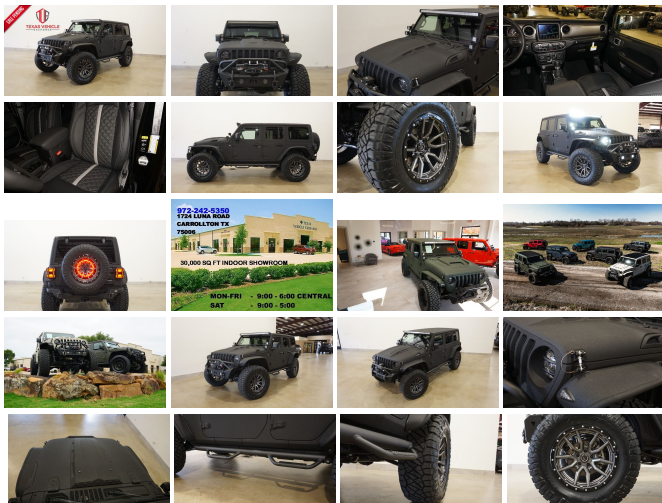
View this car on our website at [tveauto.com/7028852/ebrochure](https://tveauto.com/7028852/ebrochure)



Our Price **\$88,899**

## Specifications:

<b>Year:</b>	2021
<b>VIN:</b>	1C4HJXDM2MW585950
<b>Make:</b>	Jeep
<b>Stock:</b>	585950
<b>Model/Trim:</b>	Wrangler Unlimited Sport 4X4 DIESEL,DUPONT KEVLAR,LIFTED,NAV
<b>Condition:</b>	Pre-Owned
<b>Body:</b>	SUV
<b>Exterior:</b>	Black
<b>Engine:</b>	ENGINE: 3.0L V6 TURBO DIESEL W/ESS G3
<b>Interior:</b>	Black Leather
<b>Transmission:</b>	TRANSMISSION: 8-SPEED AUTOMATIC (8HP75)
<b>Mileage:</b>	59
<b>Drivetrain:</b>	4 Wheel Drive
<b>Economy:</b>	City 17 / Highway 23



NATION WIDE FINANCING

SUBMIT CREDIT APP [WWW.TVEAUTO.COM](https://www.tveauto.com)

OR CALL 972-242-5350

**"RAPTOR BLACK EDITION"**

CUSTOM BUILT **KEVLAR** 2021 JEEP  
WRANGLER JL UNLIMITED SPORT 4X4  
WITH 26S PACKAGE

**UPGRADES INCLUDE:**

- \* RAPTOR BLACK KEVLAR COATING WITH ANTHRACITE ACCENTS
- \* 3.0L V6 TURBO DIESEL ENGINE WITH START STOP
- \* CUSTOM ALEA BLACK LEATHER WITH SILVER STITCHING
- \* FACTORY REMOTE START
- \* COLD WEATHER GROUP
- \* CONVENIENCE GROUP
- \* FACTORY 8.4 INCH TOUCH SCREEN NAVIGATION WITH HD AM/FM/SIRIUS STEREO & ALPINE PREMIUM AUDIO SYSTEM
- \* FACTORY BACK-UP CAMERA
- \* U-CONNECT
- \* FAB FOURS STUBBY FRONT BUMPER WITH LED FOGLIGHTS
- \* FRONT D-RINGS & ISOLATORS (ANTHRACITE)
- \* SMITTYBILT NEW GEN II "X20" 10,000 LB WATERPROOF AND WIRELESS CONTROL WINCH WITH SYNTHETIC ROPE
- \* FACTOR 55 PROLINK (BLACK)
- \* FACTORY MESH GRILLE PAINTED (ANTHRACITE)
- \* FACTORY LED HEADLIGHTS
- \* RUGGED RIDGE BLACK HEADLIGHT GUARDS
- \* CUSTOM JL HEAT EXPULSION HOOD
- \* DRAKE OFF ROAD HOOD LATCHES
- \* BUSHWACKER JL FLAT STYLE FENDERS
- \* RUBICON EXPRESS 2.5" LIFT KIT WITH TERAFLX FALCON SHOCKS
- \* TERAFLX FALCON STABILIZER KIT
- \* MOPAR AUXILIARY SWITCH BANK KIT

- \* 50" LED LIGHT BAR AND 4 RIGID INDUSTRIES DUALY D2 LED PILLAR LIGHTS
- \* SMITTYBILT BLACK TUBULAR STEPS
- \* MOPAR BLACK FUEL DOOR
- \* EVOLUTION 2 BLACK LED TAIL LIGHTS
- \* RUGGED RIDGE BLACK TAIL LIGHT GUARDS
- \* RUGGED RIDGE SPARTACUS HD HINGE KIT
- \* RUGGED RIDGE LED THIRD BRAKE LIGHT RING
- \* DV8 OFF ROAD REAR BUMPER
- \* REAR D-RINGS & ISOLATORS (ANTHRACITE)
- \* ALL WEATHER FLOOR MATS
- \* TAZER JL PROGRAMMER WITH SPEEDOMETER CALIBRATION
- \* 20" FUEL ANTHRACITE "REBEL 5" WHEELS
- \* BRAND NEW NITTO RIDGE GRAPPLER 37X13.50R/20 TIRES

**WE BUILD EVERY JEEP WITH PRIDE! DO NOT HESITATE TO CALL US WITH THIS JEEP BUILD. WE CAN MAKE CHANGES TO THIS JEEP BUILD OR CUSTOM BUILD ANY JEEP TO YOUR PREFERENCE. GIVE US A CALL @ 972-242-5350 OR STOP BY FOR A TEST DRIVE. 1724 LUNA RD IN CARROLLTON - 2 MILES NORTH OF 635.**

## Our Location :



2021 Jeep Wrangler Unlimited Sport 4X4 DIESEL,DUPONT KEVLAR,LIFTED,NAV  
Texas Vehicle Exchange - 972-242-5350 - View this car on our website at [veauto.com/7028852/ebrochure](http://veauto.com/7028852/ebrochure)

## Installed Options

### Interior

- 110 MPH Vehicle Max Speed Calibration- 2 12V DC Power Outlets
- 2 Seatback Storage Pockets
- 4-Way Passenger Seat -inc: Manual Recline and Fore/Aft Movement
- 6-Way Driver Seat -inc: Manual Recline, Height Adjustment, Fore/Aft Movement and Manual Lumbar Support
- 60-40 Folding Split-Bench Front Facing Fold Forward Seatback Cloth Rear Seat
- Analog Appearance- Cargo Space Lights- Carpet Floor Trim, Carpet And Rubber Mat
- Cloth Low-Back Bucket Seats- Compass- Cruise Control w/Steering Wheel Controls
- Day-Night Rearview Mirror- Delayed Accessory Power- Fade-To-Off Interior Lighting
- Front And Rear Map Lights- Front Center Armrest w/Storage
- Front Seats w/Cloth Back Material and Manual Driver Lumbar
- Full Carpet Floor Covering -inc: Carpet Front And Rear Floor Mats
- Full Floor Console w/Locking Storage and 2 12V DC Power Outlets
- Gauges -inc: Speedometer, Odometer, Engine Coolant Temp, Tachometer, Engine Hour Meter, Trip Odometer and Trip Computer
- HVAC -inc: Console Ducts- Illuminated Front Cupholder- Illuminated Rear Cupholder
- Instrument Panel Bin, Dashboard Storage, Driver / Passenger And Rear Door Bins
- Interior Trim -inc: Metal-Look Instrument Panel Insert and Metal-Look Console Insert
- Locking Cargo Area Concealed Storage- Locking Glove Box
- Manual Adjustable Front Head Restraints and Foldable Rear Head Restraints
- Manual Air Conditioning- Manual Tilt/Telescoping Steering Column
- Outside Temp Gauge- Proximity Key For Push Button Start Only
- Redundant Digital Speedometer- Removable 3rd Row Windows
- Sentry Key Engine Immobilizer- Systems Monitor- Trip Computer
- Urethane Gear Shifter Material- Vanity w/Driver And Passenger Auxiliary Mirror

### Exterior

- Aero-Composite Halogen Headlamps w/Delay-Off- Black Door Handles

- Black Fender Flares- Black Front Bumper w/2 Tow Hooks
- Black Rear Bumper w/1 Tow Hook- Black Side Windows Trim- Body-Colored Grille
- Clearcoat Paint- Conventional Rear Cargo Access- Deep Tint Sunscreen Windows
- Front Fog Lamps- Full-Size Spare Tire Mounted Outside Rear
- Galvanized Steel/Aluminum/Magnesium Panels
- Manual Convertible Top w/Fixed Roll-Over Protection
- Non-Lock Fuel Cap w/o Discriminator- Removable Rear Window
- Tires: 245/75R17 All Season- Variable Intermittent Wipers
- Wheels: 17" x 7.5" Tech Silver Aluminum

## Safety

- 110 MPH Vehicle Max Speed Calibration- 2 12V DC Power Outlets
- 2 Seatback Storage Pockets
- 4-Way Passenger Seat -inc: Manual Recline and Fore/Aft Movement
- 6-Way Driver Seat -inc: Manual Recline, Height Adjustment, Fore/Aft Movement and Manual Lumbar Support
- 60-40 Folding Split-Bench Front Facing Fold Forward Seatback Cloth Rear Seat
- Analog Appearance- Cargo Space Lights- Carpet Floor Trim, Carpet And Rubber Mat
- Cloth Low-Back Bucket Seats- Compass- Cruise Control w/Steering Wheel Controls
- Day-Night Rearview Mirror- Delayed Accessory Power- Fade-To-Off Interior Lighting
- Front And Rear Map Lights- Front Center Armrest w/Storage
- Front Seats w/Cloth Back Material and Manual Driver Lumbar
- Full Carpet Floor Covering -inc: Carpet Front And Rear Floor Mats
- Full Floor Console w/Locking Storage and 2 12V DC Power Outlets
- Gauges -inc: Speedometer, Odometer, Engine Coolant Temp, Tachometer, Engine Hour Meter, Trip Odometer and Trip Computer
- HVAC -inc: Console Ducts- Illuminated Front Cupholder- Illuminated Rear Cupholder
- Instrument Panel Bin, Dashboard Storage, Driver / Passenger And Rear Door Bins
- Interior Trim -inc: Metal-Look Instrument Panel Insert and Metal-Look Console Insert
- Locking Cargo Area Concealed Storage- Locking Glove Box
- Manual Adjustable Front Head Restraints and Foldable Rear Head Restraints
- Manual Air Conditioning- Manual Tilt/Telescoping Steering Column
- Outside Temp Gauge- Proximity Key For Push Button Start Only
- Redundant Digital Speedometer- Removable 3rd Row Windows
- Sentry Key Engine Immobilizer- Systems Monitor- Trip Computer
- Urethane Gear Shifter Material- Vanity w/Driver And Passenger Auxiliary Mirror

## Mechanical

- 1233# Maximum Payload- 180 Amp Alternator- 21.5 Gal. Fuel Tank- 3 Skid Plates
- 3.45 Rear Axle Ratio
- 4-Wheel Disc Brakes w/4-Wheel ABS, Front Vented Discs, Brake Assist and Hill Hold Control
- 50 State Emissions- 650CCA Maintenance-Free Battery w/Run Down Protection
- Auto Locking Hubs- Aux Battery- Brake Actuated Limited Slip Differential
- Electro-Hydraulic Power Assist Steering- Engine Oil Cooler
- Engine: 3.6L V6 24V VVT UPG I w/ESS - Front And Rear Anti-Roll Bars
- GVWR: 5,400 lbs- Gas-Pressurized Shock Absorbers
- Leading Link Front Suspension w/Coil Springs- Manual Transfer Case
- Normal Duty Suspension- Part-Time Four-Wheel Drive- Single Stainless Steel Exhaust
- Stop-Start Dual Battery System- Towing Equipment -inc: Trailer Sway Control
- Trailing Arm Rear Suspension w/Coil Springs- Transmission: 6-Speed Manual

## Option Packages

### Factory Installed Packages

ENGINE: 3.0L V6 TURBO DIESEL W/ESS G3

-inc: Selective Catalytic Reduction (Urea), Anti-Spin Differential Rear Axle, Non-Lock Fuel Cap w/Discriminator, 18.3 Gallon Fuel Tank, Chrome EcoDiesel Badge, 3.73 Rear Axle Ratio, Black Fuel Filler Door, Dana M210 Front Axle, GVWR: 5,800 lbs

\$3,500

TRANSMISSION: 8-SPEED AUTOMATIC (8HP75)

\$2,500

-  
**8.4" RADIO & PREMIUM AUDIO GROUP**

-inc: Emergency/Assistance Call, Alpine Premium Audio System, Rear View Auto Dim Mirror **\$2,095**

-  
**BLACK 3-PIECE HARD TOP**

-inc: Freedom Panel Storage Bag, Rear Window Defroster, Rear Window Wiper/Washer, No Soft Top **\$1,595**

-  
**COLD WEATHER GROUP**

-inc: Heated Steering Wheel, Heated Front Seats **\$995**

-  
**CONVENIENCE GROUP**

-inc: Universal Garage Door Opener **\$595**

-  
**TECHNOLOGY GROUP**

-inc: Google Android Auto, Cluster 7.0" TFT Color Display, SiriusXM Satellite Radio, SiriusXM Radio Service, For More Info, Call 800-643-2112, USB Host Flip, Integrated Center Stack Radio, 7.0" Touchscreen Display, Air Conditioning w/Auto Temp Control, Radio: Uconnect 4 w/7" Display, Apple CarPlay, Air Filtering, GPS Antenna Input **\$995**

-  
**QUICK ORDER PACKAGE 26S SPORT S**

-inc: Engine: 3.0L V6 Turbo Diesel w/ESS G3, Transmission: 8-Speed Automatic (8HP75), Front 1-Touch Down Power Windows, Speed Sensitive Power Locks, Sport S, Power Heated Mirrors, Automatic Headlamps, Leather Wrapped Steering Wheel, Security Alarm, Remote Keyless Entry, Sun Visors w/Illuminated Vanity Mirrors **\$3,200**

-  
**Option Packages Total**

**\$15,475**

---

Texas Vehicle Exchange

[tveauto.com](http://tveauto.com)

972-242-5350

1724 Luna Road

Carrollton, TX 75006

© 2023 AutoRevo - All rights reserved. - Powered by AutoRevo