



## 2016 Chevrolet Corvette Z51 3LT w/ MODS

**Website Price \$49,995**

View this vehicle on our website at [autoparkdallas.com](http://autoparkdallas.com)



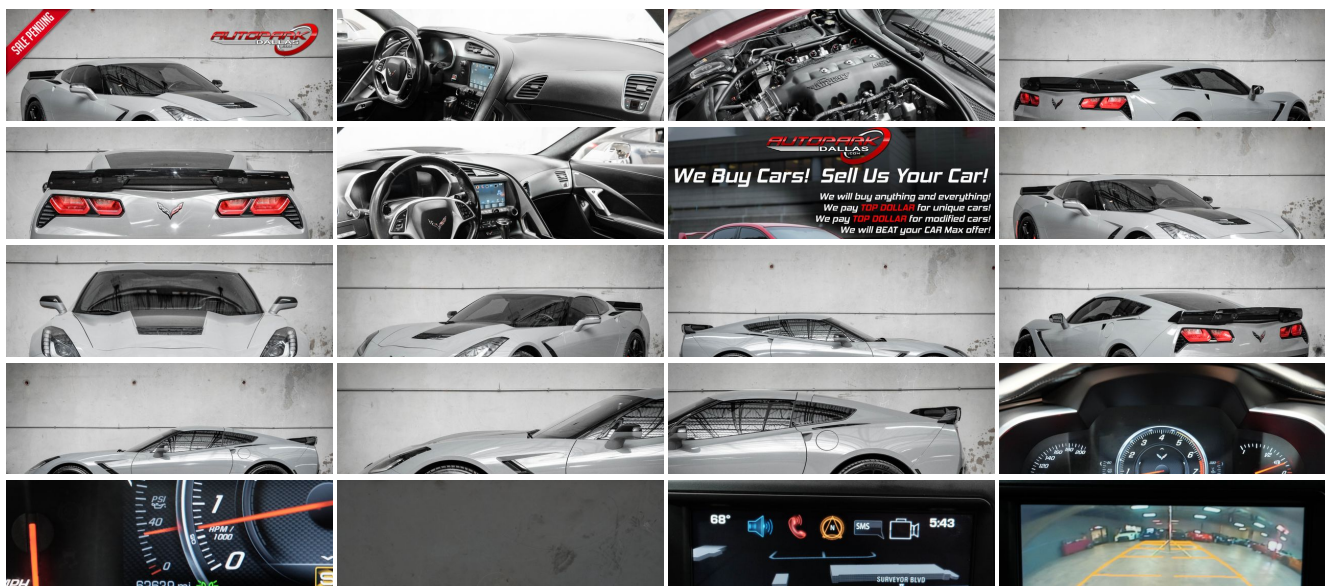
(214) 945-2601

2061 S Stemmons Fwy , Lewisville, TX 75067

Photos

Details

Contact



## Specifications:

<b>Year:</b>	2016
<b>VIN:</b>	1G1YM2D73G5114705
<b>Make:</b>	Chevrolet
<b>Model/Trim:</b>	Corvette Z51 3LT w/ MODS
<b>Condition:</b>	Pre-Owned
<b>Body:</b>	Coupe
<b>Exterior:</b>	Gray
<b>Engine:</b>	ENGINE, 6.2L (376 CI) V8 DI
<b>Interior:</b>	Jet Black Leather
<b>Transmission:</b>	TRANSMISSION, 8-SPEED PADDLE SHIFT WITH AUTOMATIC MODES
<b>Mileage:</b>	62,369
<b>Drivetrain:</b>	Rear Wheel Drive
<b>Economy:</b>	City 16 / Highway 29

## Vehicle Description

AutoPark Dallas is thrilled to offer you this Tuned & TSP Headers 2016 Chevrolet Corvette Stingray Z51 3LT with MANY Modifications for sale! Wrapped in Avery Gloss Rock Grey with a EOS Stage 3 Body Kit, this Corvette stands out immediately with all the love its been delivered! Even better is under the hood you have a MSD Intake Manifold, aFe Cold Air Intake, and TSP Long Tube Headers tuned together by Serious HP. Not to forget that Houston House of Power assisting with a Transmission Tune to help withstand the madness that Corvette delivers!!! DO! NOT HESISTATE!!! To swing by and checks out this Corvette Stingray Z51 3LT parked here in our indoor 16,000 Sq Ft Showroom located in Dallas , Texas amongst our inventory of 100+ other Performance / Modified and Luxury cars!

---

### 2016 Chevrolet Corvette Stingray Z51 3LT

\* 2 Set of Keys !\*

\* Z51 Package !\*

\* 3LT Package !\*

### MODIFICATIONS!

\* DYNO TUNED BY SERIOUS HP !\*

\* TRANSMISSION TUNED BY HOUSTON HOUSE OF POWER !\*

MSD Intake Manifold

aFe Cold-Air Intake

TSP Long Tube Headers

Avery Gloss Rock Wrapped Exterior

EOS Stage 3 Body Kit

\* Front Splitter, Side Skirts, Spoiler \*

Blacked Out Side Markers

Rear Reflectors Blacked Out & LED Lights

Z06 Front Grille

Black Badges & Emblems

Windows Tinted

## STOCK!

\* Factory Color !\* Long Beach Red Metallic Tintcoat Exterior

Jet Black Leather Interior

Bluetooth

Navigation

Heated & Cooled Seats

Push Button Start

Digital Heads-Up Display

Comfort Access Keyless Entry

Dual Climate Controls

Remote Start-Up

Cruise Control

Daytime Running Lights

BOSE Premium Audio System

CD & AUX Capable

Steering Wheel Mounted Controls

Manual Mode w/ Paddle Shifters

6.2L V8 DI Engine

8-Speed Automatic Transmission

Rear Wheel Drive

Professionally Detailed!

Well Maintained!

\* Free CarFax Report !\*

AND SO MUCH MORE!!!

---

## Financing is available!

Check out our Payment Calculator to get an estimate on your monthly payments!

OR

Get pre-approved in no time by filling out a credit application on the 'Finance' section of our website!

---

Check out our Google Reviews by \*Clicking\* this [LINK!](#)

Referrals and Testimonials is what our business is built on!

---

The team here at AutoPark Dallas, is dedicated to offering a level of customer service not usually found in the automobile industry. Thanks to years of extensive car buying / selling experience, we pursue quality used and new vehicles that are hand-picked from factory sources. Our love for automobiles and dislike of traditional dealership tactics is what motivates us to provide the service we do! The pride we take in continuing this service long after the vehicle has been delivered is what we strive for! Looking forward to making every effort to see that our customer is completely satisfied and a friend for life!

Pre-purchase inspections are always welcomed!

We also offer airport pick-up, competitive financing options, free CarFax Reports, Car Shipping nationwide, and so much more!

Trade-In(s) are always accepted or sell us your used car (MODIFIED OR NOT)! Please call or text for more information about Trade-Ins or selling your car to us @ (214) 945-2601!

#(214) 945-2601

Call or Text **Anytime!**

Se habla Español

**WE BUY CARS!**

WWW.AUTOPARKDALLAS.COM

## Installed Options

### Interior

- 3LT interior trim seats, console, door armrests and instrument panel in interior color selected
- Air conditioning, dual-zone automatic climate control with individual climate settings for driver and dedicated passenger controls and outside temperature display
- Air filtration system with pollen filter- Cargo net
- Console, floor 2 covered cup holders, auxiliary power outlet, USB ports, auxiliary input jack and storage
- Cruise control, electronic with set and resume speed
- Custom Leather Wrapped Interior Package features leather-wrapped upper instrument panel, upper door trim panels and console storage cover
- Defogger, rear-window, electric
- Door locks, power programmable with lockout protection
- Driver Information Center, color- Floor mats, carpeted
- Hatch release, push button open
- Head-Up Display with color readouts for street mode, track mode with g-meter, vehicle speed, engine rpm
- Keyless Access with push button start and 2 remote transmitters that enable automatic door unlock and open by touching door switch
- Lighting, interior with courtesy, cargo and glovebox- Luggage shade
- Memory Package, recalls 2 driver "presets" for 8-way power seat, outside mirrors and tilt/telescoping steering column
- Mirror, inside rearview auto-dimming, frameless- Oil life monitoring system
- Perforated Napa leather seating surfaces- Seat adjusters, driver and passenger 8-way
- Seat adjusters, power bolster and power lumbar- Seats, GT bucket
- Seats, heated and vented driver and passenger
- Steering column, power tilt and telescopic
- Steering wheel controls, audio, voice recognition and Driver Information Center
- Steering wheel, 3-spoke leather-wrapped, flat-bottom
- Storage, with electric locking glovebox, behind screen storage, center console and rear compartment with cover
- Sueded Microfiber-Wrapped Upper Interior Trim Package includes headliner, visors, trim above windshield and rear window, A-pillar trim and area around quarter window
- Theft-deterrent system, body security content and unauthorized entry electrical
- Theft-deterrent system, vehicle, push button start, immobilizer and audible visual alarm
- Universal Home Remote includes garage door opener, 3-channel programmable, located on driver visor
- Visors, driver and passenger illuminated vanity mirrors
- Windows, power with driver and passenger Express-Down/Up

### Exterior

- Tires, P245/35ZR19 front and P285/30ZR20 rear, performance, summer-only, run flat (Do not use summer only tires in winter conditions, as it would adversely affect vehicle safety, performance and durability. Use only GM-approved tire and wheel combinations. Unapproved combinations may change the vehicle's performance characteristics. For important tire and wheel information, see your dealer for a copy of the vehicle's owner's manual.)
- Wheels, 5-split spoke, Silver-painted aluminum, 19" x 8.5" (48.3 cm x 21.6 cm) front and 20" x 10" (50.8 cm x 25.4 cm) rear
- Chrome Badge Package- Engine access, rear-opening hood
- Glass, Solar-Ray light-tinted

## Option Packages

### Factory Installed Packages

ENGINE, 6.2L (376 CI) V8 DI  
(455 hp [339.3 kW] @ 6000 rpm, 460 lb-ft of  
torque [621.0 N-m] @ 4600 rpm)

TRANSMISSION, 8-SPEED PADDLE SHIFT WITH AUTOMATIC  
MODES

\$1,725

CALIPERS, RED-PAINTED

\$595

REMOTE VEHICLE STARTER SYSTEM

REAR AXLE, 2.73 RATIO, ELECTRONIC LIMITED-SLIP,  
PERFORMANCE

EMISSIONS, FEDERAL REQUIREMENTS, 50-STATE CERTIFIED

LONG BEACH RED METALLIC TINTCOAT

\$995

STANDARD PAINT

3LT PREFERRED EQUIPMENT GROUP  
includes Standard Equipment

\$9,745

AUDIO SYSTEM, CHEVROLET MYLINK RADIO WITH  
NAVIGATION

and 8" diagonal color touch-screen, AM/FM  
stereo with seek-and-scan and digital clock,  
includes Bluetooth streaming audio for music  
and select phones; voice-activated technology  
for radio and phone; featuring Apple CarPlay  
capability for compatible phone

JET BLACK, PERFORATED NAPA LEATHER SEATING  
SURFACES

SEATS, GT BUCKET

WHEELS, BLACK ALUMINUM, 19" X 8.5" (48.3 CM X 21.6 CM)  
FRONT AND 20" X 10" (50.8 CM X 25.4 CM) REAR

\$495

- Headlamps, high intensity discharge (HID), Xenon, LED park and turn signals and Daytime Running Lamps
- Mirrors, outside heated power-adjustable and driver-side auto-dimming, body- color
- Roof panel, carbon fiber, painted body-color, removable- Wipers, front intermittent

## Safety

- 3LT interior trim seats, console, door armrests and instrument panel in interior color selected
- Air conditioning, dual-zone automatic climate control with individual climate settings for driver and dedicated passenger controls and outside temperature display
- Air filtration system with pollen filter- Cargo net
- Console, floor 2 covered cup holders, auxiliary power outlet, USB ports, auxiliary input jack and storage
- Cruise control, electronic with set and resume speed
- Custom Leather Wrapped Interior Package features leather-wrapped upper instrument panel, upper door trim panels and console storage cover
- Defogger, rear-window, electric
- Door locks, power programmable with lockout protection
- Driver Information Center, color- Floor mats, carpeted
- Hatch release, push button open
- Head-Up Display with color readouts for street mode, track mode with g-meter, vehicle speed, engine rpm
- Keyless Access with push button start and 2 remote transmitters that enable automatic door unlock and open by touching door switch
- Lighting, interior with courtesy, cargo and glovebox- Luggage shade
- Memory Package, recalls 2 driver "presets" for 8-way power seat, outside mirrors and tilt/telescoping steering column
- Mirror, inside rearview auto-dimming, frameless- Oil life monitoring system
- Perforated Napa leather seating surfaces- Seat adjusters, driver and passenger 8-way
- Seat adjusters, power bolster and power lumbar- Seats, GT bucket
- Seats, heated and vented driver and passenger
- Steering column, power tilt and telescopic
- Steering wheel controls, audio, voice recognition and Driver Information Center
- Steering wheel, 3-spoke leather-wrapped, flat-bottom
- Storage, with electric locking glovebox, behind screen storage, center console and rear compartment with cover
- Sueded Microfiber-Wrapped Upper Interior Trim Package includes headliner, visors, trim above windshield and rear window, A-pillar trim and area around quarter window
- Theft-deterrent system, body security content and unauthorized entry electrical
- Theft-deterrent system, vehicle, push button start, immobilizer and audible visual alarm
- Universal Home Remote includes garage door opener, 3-channel programmable, located on driver visor
- Visors, driver and passenger illuminated vanity mirrors
- Windows, power with driver and passenger Express-Down/Up

## Mechanical

- Differential, electronic limited slip, rear- Rear axle, 3.42 ratio, limited slip
- Transmission, 7-speed manual with Active Rev Matching with Z51 performance ratios
- Brakes, performance 4-wheel antilock, 4-wheel disc- Calipers, Black-painted
- Cooler, rear differential- Dry sump oil system
- Engine, 6.2L (376 ci) V8 DI (455 hp [339.3 kW] @ 6000 rpm, 460 lb-ft of torque [621.0 N-m] @ 4600 rpm)
- Exhaust, performance increases to 460 horsepower, aggressive exhaust sound, with 4" polished stainless-steel tips
- Frame, aluminum, structure- Rear wheel drive
- Steering, power, speed-sensitive rack-and-pinion, variable ratio
- Suspension, Z51 performance

Option Packages Total

\$13,555



View this car on our website at [autoparkdallas.com/7027075](https://autoparkdallas.com/7027075)

Website: [autoparkdallas.com](https://autoparkdallas.com)

Phone: (214) 945-2601

Map: 2061 S Stemmons Fwy, Lewisville, TX 75067

