



2014 Cadillac CTS-V R&R CAMMED, HP Tuned, and MORE!

Website Price \$42,995

View this vehicle on our website at autoparkdallas.com



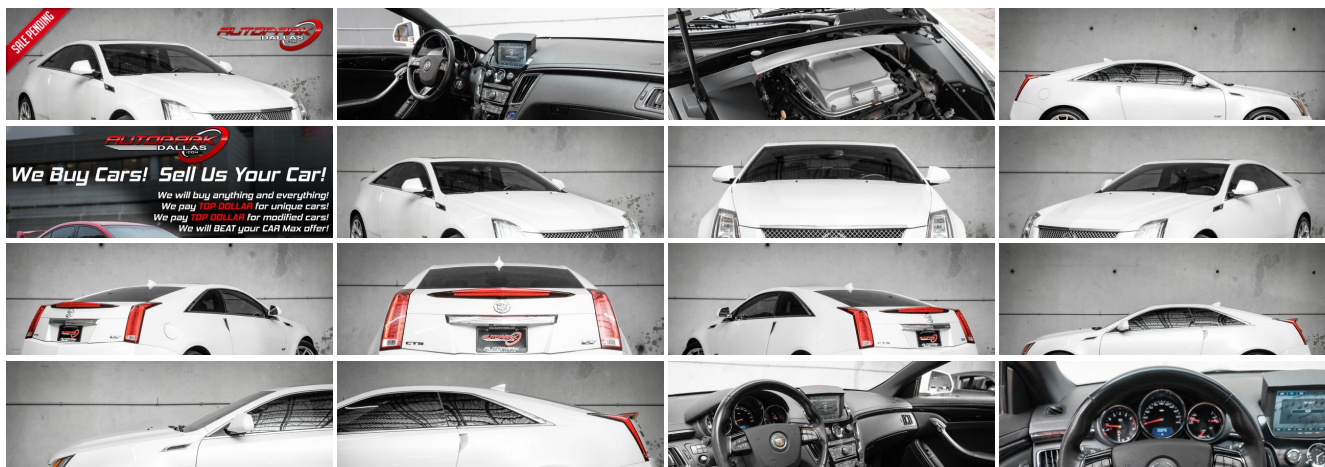
(214) 945-2601

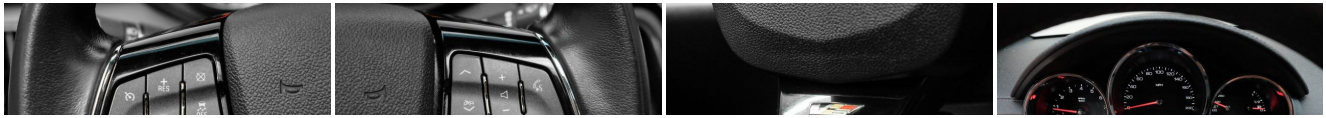
2061 S Stemmons Fwy , Lewisville, TX 75067

Photos

Details

Contact





Specifications:

Year:	2014
VIN:	1G6DV1EPXE0105332
Make:	Cadillac
Model/Trim:	CTS-V R&R CAMMED, HP Tuned, and MORE!
Condition:	Pre-Owned
Body:	Coupe
Exterior:	White Diamond Tricoat
Engine:	ENGINE, 6.2L SUPERCHARGED V8
Interior:	Ebony/Ebony Leather
Transmission:	TRANSMISSION, 6-SPEED AUTOMATIC
Mileage:	60,998
Drivetrain:	Rear Wheel Drive
Economy:	City 12 / Highway 18

Vehicle Description

AutoPark Dallas is thrilled to offer you this R&R CAMMED 2014 Cadillac CTS-V with MANY Modifications for sale! Hit the street roaring with this R&R CAMMED, Stainless Steel Longtube Header, Lonestar Horsepower Level 2 Tuned CTS-V that has so many additional goodies under the hood that when you turn the key wakes up the driving spirit every time! Not to forgot looking good in one of Cadillac's best colors: White Diamond Tricoat! DO! NOT! HESISTATE!!! If your search is for a fun high-performance luxury vehicle, then look no further than this CTS-V parked here in our indoor 16,000 Sq Ft Showroom located in Dallas , Texas amongst our inventory of 100+ other Performance / Modified and Luxury cars!

2014 Cadillac CTS-V Sedan

* Clean CarFax !*

MODIFICATIONS!

Lonestar Horsepower Level 2 Tuned
R&R Camshaft Upgrade
Stainless Steel Long Tube Headers
R&R Timing Chain Tensioner to Dog Bone Conversion
R&R Intercooler Brick Reinforcement
Hylift Johnson Direct Shot Lifters
Brian Tooley Racing 1 Bolt to 3 Bolt Conversion Kit
Brain Tooley Racing Stage 3 LSA Blower Cam Package
LHP Gasket and Bolt Kit
GM LS Gen4 160 Thermostat
Injector Dynamics ID 1050x Injectors
MSD Spark Plug Wire Set
AIRAID Cold Air Intake
Metco Motorsports Solid Supercharger Isolator
Modified Exhaust System

Windows Tinted

STOCK!

White Diamond Tricoat Exterior

Ebony Leather & Suede Interior

Bluetooth

Navigation

Blind-Spot Monitoring

Heated Front Row Seats

Rear Reverse Sensors

Remote Start

Factory BREMBO Brakes

Manual Mode w/ Paddle Shifters

Cruise Control

Daytime Running Lights

Dual Climate Controls

BOSE Premium Sound System

Steering Wheel Mounted Controls

6.2L Supercharged V8 Engine

6-Speed Automatic Transmission

Rear Wheel Drive

Professionally Detailed!

Well Maintained!

* Free CarFax Report !*

AND SO MUCH MORE!!!

Financing is available!

Check out our Payment Calculator to get an estimate on your monthly payments!

OR

Get pre-approved in no time by filling out a credit application on the 'Finance' section of our website!

Check out our Google Reviews by *Clicking* this [LINK!](#)

Referrals and Testimonials is what our business is built on!

The team here at AutoPark Dallas, is dedicated to offering a level of customer service not usually found in the automobile industry. Thanks to years of extensive car buying / selling experience, we pursue quality used and new vehicles that are hand-picked from factory sources. Our love for automobiles and dislike of traditional dealership tactics is what motivates us to provide the service we do! The pride we take in continuing this service long after the vehicle has been delivered is what we strive for! Looking forward to making every effort to see that our customer is completely satisfied and a friend for life!

Pre-purchase inspections are always welcomed!

We also offer airport pick-up, competitive financing options, free CarFax Reports, Car Shipping nationwide, and so much more!

Trade-In(s) are always accepted or sell us your used car (MODIFIED OR NOT)! Please call or text for more information about Trade-Ins or selling your car to us @ (214) 945-2601!

#(214) 945-2601

Call or Text **Anytime!**

Se habla Español

WE BUY CARS!

WWW.AUTOPARKDALLAS.COM

Installed Options

Interior

- Air filtration system, automatic cabin odor filtration- Armrest, front center
- Cargo convenience net, trunk
- Climate control, dual-zone automatic with individual climate settings for driver and right-front passenger
- Console, front floor with floor shifter, integral armrest, storage compartment and cup holders
- Console, rear center with dual cup holders
- Cruise control, electronic with set and resume speed
- Defogger, rear-window electric with front and side window outlets for the driver and right-front passenger
- Door locks, power programmable- Floor mats, carpeted front and rear
- Fuel gauge, analog- Head restraints, active front
- Instrumentation, analog with speedometer, tachometer, fuel gauge, oil pressure gauge (V-Series supercharger boost gauge), engine water temperature gauge and Driver Information Center
- Keyless Access, passive entry- Keyless start, switch
- Leather Seating Surfaces with Sueded fabric inserts
- Lighting accent, LED spotlights with lighting pipes
- Mirror, inside rearview auto-dimming with OnStar controls
- Remote vehicle start (Not available with (MN6) 6-speed manual transmission.)
- Seat adjuster, 8-way power front passenger
- Seat adjusters, 2-way power driver and front passenger lumbar control
- Seat, rear split-folding
- Seats, front bucket includes 8-way power driver seat adjuster and articulating head restraints
- Seats, heated driver and front passenger
- Steering column, power rake wheel and telescopic with memory
- Steering wheel controls, mounted controls for audio and cruise and Bluetooth (Also includes Traction Control/StabiliTrak button.)
- Steering wheel, leather-wrapped- Theft-deterrent alarm system
- Theft-deterrent system, vehicle, PASS-Key III- Trunk release, power
- Universal Home Remote, includes garage door opener, 3-channel programmable
- Visors, driver and front passenger illuminated vanity mirrors
- Windows, power with front Express-down/-up and front passenger lockout

Exterior

- Wheels, 19" x 9" (48.3 cm x 22.9 cm) front and 19" x 10" (48.3 cm x 25.4 cm) rear, premium multi-coat painted finish
- CHMSL, V-Series- Fog lamps, integrated in front fascia- Glass, Solar-Ray light-tinted
- Headlamp washer system
- Headlamps, high intensity discharge with Adaptive Forward Lighting System and flash-to-pass.
- Mirrors, outside heated power-adjustable, body-color, manual-folding- Sunroof, delete
- Tire Inflation Kit Tires P255/40R19 front and P285/35R19 rear V-rated performance

Option Packages

Factory Installed Packages

ENGINE, 6.2L SUPERCHARGED V8
(556 hp [414.6 kW] @ 6100 rpm, 551 lb-ft of torque [743.9 N-m] @ 3800 rpm)

TRANSMISSION, 6-SPEED AUTOMATIC

LICENSE PLATE BRACKET, FRONT

STEERING WHEEL MOUNTED PADDLE SHIFT CONTROLS

SUNROOF, STANDARD SIZED, POWER, TILT-TO-OPEN ONLY,
POWER SUNSHADE

\$700

WOOD TRIM PACKAGE

real Midnight Sapele wood on instrument panel,
center console and door trim

\$600

EMISSIONS, FEDERAL REQUIREMENTS

WHITE DIAMOND TRICOAT

\$995

STANDARD PAINT

PREFERRED EQUIPMENT GROUP

Includes standard equipment

AUDIO SYSTEM, AM/FM STEREO WITH SINGLE-SLOT CD/DVD
PLAYER (AUDIO ONLY), MP3 PLAYBACK, BOSE SURROUND
SOUND 10-SPEAKER SYSTEM AND HDD-BASED NAVIGATION
with XM NavTraffic/Real Time Weather, 8"
diagonal glide-up screen with voice and text
guidance, auxiliary input jack, Radio Data
System (RDS), 40GB Hard Drive Device (HDD)
10GB for music storage, and USB with audio
connectivity

EBONY/EBONY, LEATHER SEATING SURFACES
with Sueded fabric inserts

- The innovative tires, 1200/70/17 front and 1200/50/17 rear, rated performance
- Wipers, Rainsense- Wipers, front intermittent with washers

Safety

- Air filtration system, automatic cabin odor filtration- Armrest, front center
- Cargo convenience net, trunk
- Climate control, dual-zone automatic with individual climate settings for driver and right-front passenger
- Console, front floor with floor shifter, integral armrest, storage compartment and cup holders
- Console, rear center with dual cup holders
- Cruise control, electronic with set and resume speed
- Defogger, rear-window electric with front and side window outlets for the driver and right-front passenger
- Door locks, power programmable- Floor mats, carpeted front and rear
- Fuel gauge, analog- Head restraints, active front
- Instrumentation, analog with speedometer, tachometer, fuel gauge, oil pressure gauge (V-Series supercharger boost gauge), engine water temperature gauge and Driver Information Center
- Keyless Access, passive entry- Keyless start, switch
- Leather Seating Surfaces with Sueded fabric inserts
- Lighting accent, LED spotlights with lighting pipes
- Mirror, inside rearview auto-dimming with OnStar controls
- Remote vehicle start (Not available with (MN6) 6-speed manual transmission.)
- Seat adjuster, 8-way power front passenger
- Seat adjusters, 2-way power driver and front passenger lumbar control
- Seat, rear split-folding
- Seats, front bucket includes 8-way power driver seat adjuster and articulating head restraints
- Seats, heated driver and front passenger
- Steering column, power rake wheel and telescopic with memory
- Steering wheel controls, mounted controls for audio and cruise and Bluetooth (Also includes Traction Control/StabiliTrak button.)
- Steering wheel, leather-wrapped- Theft-deterrent alarm system
- Theft-deterrent system, vehicle, PASS-Key III- Trunk release, power
- Universal Home Remote, includes garage door opener, 3-channel programmable
- Visors, driver and front passenger illuminated vanity mirrors
- Windows, power with front Express-down/-up and front passenger lockout

Mechanical

- Transmission, 6-speed manual (Must specify a transmission. No charge option.)
- Battery, maintenance-free with rundown protection- Brake, electronic parking
- Brakes, 4-wheel antilock, 4-wheel disc- Brakes, Brembo- Differential, limited slip
- Drivetrain, rear-wheel drive
- Engine, 6.2L supercharged V8 (556 hp [414.6 kW] @ 6100 rpm, 551 lb-ft of torque [743.9 N-m] @ 3800 rpm)
- Exhaust, stainless steel- Steering, power, rack-and-pinion
- Suspension, Sport with Magnetic Ride Control

SEATS, FRONT BUCKET

includes 8-way power driver seat adjuster and articulating head restraints

WHEELS, 19" X 9" (48.3 CM X 22.9 CM) FRONT AND 19" X 10" (48.3 CM X 25.4 CM) REAR, HIGH POLISHED

\$800

Option Packages Total

\$3,095



Auto Park Dallas

View this car on our website at autoparkdallas.com/7026647

Website: autoparkdallas.com

Phone: (214) 945-2601

Map: 2061 S Stemmons Fwy, Lewisville, TX 75067

