



2020 Chevrolet Camaro 1LT

Our Price \$35,995

View this vehicle on our website at autodepotcalexico.com

Auto Depot of Calexico

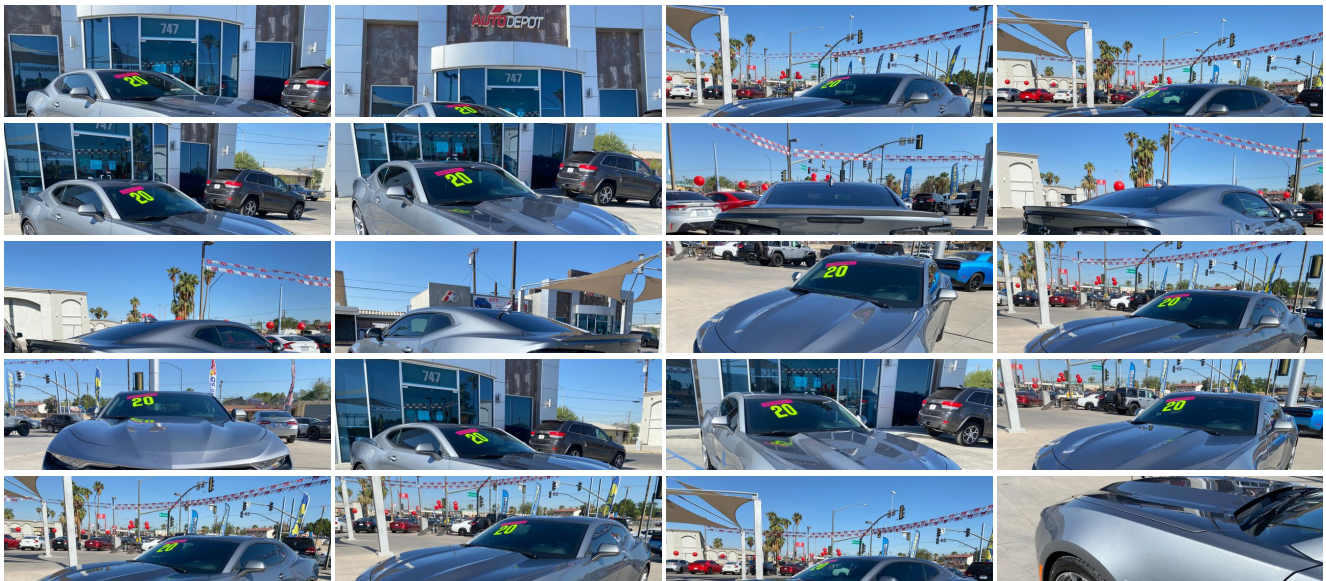
[760-357-0043](tel:760-357-0043)

747 Imperial Ave , Calexico, CA 92231

[Photos](#)

[Details](#)

[Contact](#)



Specifications:

Year:	2020
VIN:	1G1FB1RSXL0131271
Make:	Chevrolet
Stock:	6120
Model/Trim:	Camaro 1LT
Condition:	Pre-Owned
Body:	Coupe
Exterior:	Satin Steel Gray Metallic
Engine:	ENGINE, 3.6L V6, DI, VVT
Interior:	Jet Black Cloth
Mileage:	14,328
Drivetrain:	Rear Wheel Drive
Economy:	City 16 / Highway 26

Vehicle Description

Installed Options	Option Packages
<div>Interior<div><ul style="list-style-type: none">- Door locks, power programmable with lockout protection- Floor mats, carpeted front- Keyless Open and Start includes 2 remote transmitters that enable automatic door unlock and open by touching door switch- Seat trim, Cloth- Seats, Cloth front Sport bucket- Air conditioning, single-zone automatic climate control- Chevrolet Connected Access with 10 years of standard connectivity which enables services such as, Vehicle Diagnostics, Dealer Maintenance Notification, Chevrolet Smart Driver, Marketplace and more (Limitations apply. Not transferable. Standard connectivity available to original purchaser for ten years from the date of initial vehicle purchase for model year 2018 or newer Chevrolet vehicles. See onstar.com for details and further plan limitations. Connected Access does not include emergency or security services. Availability and additional services enabled by Connected Access are subject to change.)- Compass display- Cruise control, electronic with set and resume speed, steering wheel mounted- Cup holders, 2 front- Dead pedal, driver- Defogger, rear-window, electric- Driver Information Center, color display- Glovebox, lockable- Lighting, front reading lamps- Mirror, inside rearview manual day/night, frameless- Seat adjuster, driver, 8-way power- Seat adjuster, front passenger, 6-way power- Seat, rear, folding- Shift knob, leather-wrapped- Speedometer, miles/kilometers- Steering column, manual rake and telescopic- Steering wheel, leather-wrapped, flat-bottom- Theft-deterrent system, electrical, unauthorized entry- Trunk release, power- Visors, driver and front passenger vanity mirrors, covered, non-illuminated- Windows, power with driver and passenger Express-Down/Up</div></div> <div>Exterior<div><ul style="list-style-type: none">- Tires, 245/50R18, blackwall, all-season- Mirrors, outside power-adjustable, body-color- Wheels, 18" (45.7 cm) Silver-painted aluminum- Wipers, front variable-speed, intermittent with washers</div></div> <div>Safety<div><ul style="list-style-type: none">- Door locks, power programmable with lockout protection- Floor mats, carpeted front- Keyless Open and Start includes 2 remote transmitters that enable automatic door unlock and open by touching door switch- Seat trim, Cloth- Seats, Cloth front Sport bucket- Air conditioning, single-zone automatic climate control- Chevrolet Connected Access with 10 years of standard connectivity which enables services such as, Vehicle Diagnostics, Dealer Maintenance Notification, Chevrolet Smart Driver, Marketplace and more (Limitations apply. Not transferable. Standard connectivity available to original purchaser for ten years from the date of initial vehicle purchase for model year 2018 or newer Chevrolet vehicles. See onstar.com for details and further plan limitations. Connected Access does not include emergency or security services. Availability and additional services enabled by Connected Access are subject to change.)</div></div>	<div>Factory Installed Packages</div> <div>ENGINE, 3.6L V6, DI, VVT<div>(335 hp [250 kW] @ 6800 rpm, 284 lb-ft of torque [383.4 N-m] @ 5300 rpm)</div>\$1,595</div> <div>REMOTE VEHICLE STARTER SYSTEM</div> <div>RS PACKAGE<div>includes (RQ9) 20" 5-split spoke premium Gray-painted, machined-face aluminum wheels, dark tint LED tail lamps, RS-specific grilles, Black front and rear bowties, and (D80) decklid-mounted lip spoiler</div>\$1,950</div> <div>TRANSMISSION, 8-SPEED</div> <div>SATIN STEEL GRAY METALLIC</div> <div>STANDARD PAINT</div> <div>1LT PREFERRED EQUIPMENT GROUP<div>includes standard equipment</div></div> <div>AUDIO SYSTEM, CHEVROLET INFOTAINMENT 3 SYSTEM, 7" DIAGONAL COLOR TOUCHSCREEN, AM/FM STEREO.<div>Additional features for compatible phones include: Bluetooth audio streaming for 2 active devices, voice command pass-through to phone, Apple CarPlay and Android Auto capable.</div></div> <div>JET BLACK, SEAT TRIM</div> <div>Option Packages Total\$3,545</div>

Availability and additional services enabled by connected features are subject to change.

- Compass display
- Cruise control, electronic with set and resume speed, steering wheel mounted
- Cup holders, 2 front- Dead pedal, driver- Defogger, rear-window, electric
- Driver Information Center, color display- Glovebox, lockable
- Lighting, front reading lamps- Mirror, inside rearview manual day/night, frameless
- Seat adjuster, driver, 8-way power- Seat adjuster, front passenger, 6-way power
- Seat, rear, folding- Shift knob, leather-wrapped- Speedometer, miles/kilometers
- Steering column, manual rake and telescopic
- Steering wheel, leather-wrapped, flat-bottom
- Theft-deterrent system, electrical, unauthorized entry- Trunk release, power
- Visors, driver and front passenger vanity mirrors, covered, non-illuminated
- Windows, power with driver and passenger Express-Down/Up

Mechanical

- Brakes, 4-wheel antilock, 4-wheel disc
- Differential, limited slip (Deleted when (MX0) automatic transmission is ordered.)
- Engine, 2.0L Turbo, 4-cylinder, SIDI, VVT (275 hp [205 kW] @ 5600 rpm, 295 lb-ft of torque [398.3 N-m] @ 3000-4500 rpm)
- Transmission, 6-speed manual- Battery rundown protection
- Driver Selector Mode up to 4 modes available for various driving conditions - Snow/Ice, Tour, Sport and Track (SS and ZL1 models only)
- Engine air filter life monitor- Exhaust, dual-outlet stainless-steel with bright tips
- Fueling system, capless- Rear axle, 3.27 ratio- Rear wheel drive
- Steering, power, variable ratio, electric- Suspension, Sport

Auto Depot of Calexico

Auto Depot of Calexico

View this car on our website at autodepotcalexico.com/7026343

Website: autodepotcalexico.com

Phone: 760-357-0043

Map: [747 Imperial Ave, Calexico, CA 92231](#)



