



## 1993 RAM 250 LE 1ST GEN 4X4 CUMMINS DIESEL REG CAB CLEAN CARFAX RARE

**Our Price \$29,500**

View this vehicle on our website at [njtrucking.com](http://njtrucking.com)

King of Cars and Trucks

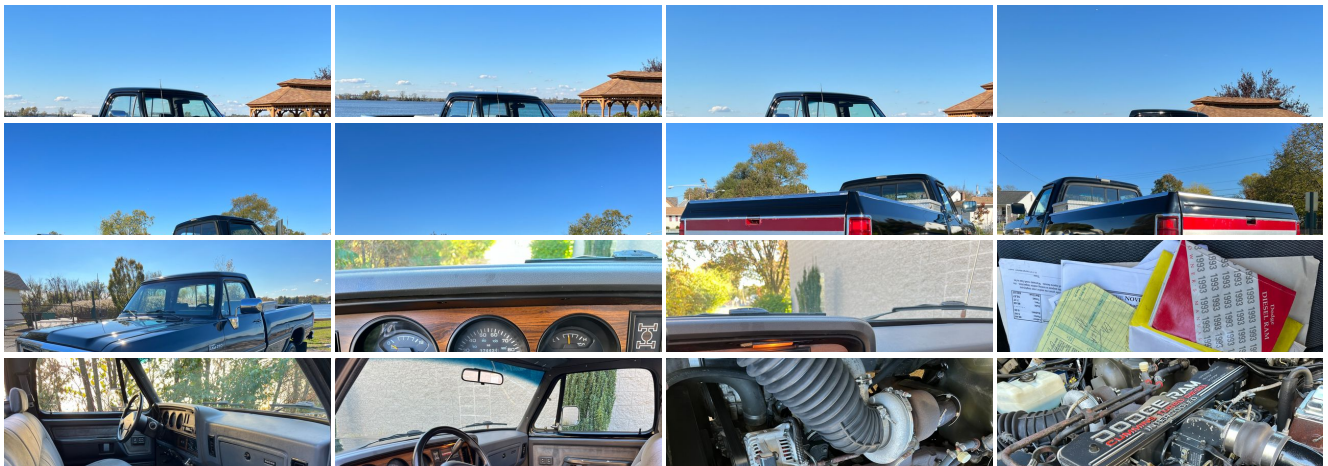
**856-693-3181**

1229 Broadway , Westville, New Jersey 08093

Photos

Details

Contact





Specifications:

Year:	1993
VIN:	1B7KM26C5PS260399
Make:	RAM 250 LE 1ST GEN 4X4
Model/Trim:	CUMMINS DIESEL REG CAB CLEAN CARFAX RARE
Condition:	Pre-Owned
Exterior:	Black
Interior:	Gray
Mileage:	174,433
Drivetrain:	4 Wheel Drive

Vehicle Description

1993 RAM 250 LE 4X4  
REG CAB  
CUMMINS TURBO DIESEL  
AUTOMATIC TRANSMISSION  
( 174,433 ORIGINAL ACTUAL MILES )  
RUNS AND DRIVES EXCELLENT AND TIGHT  
VERY CLEAN  
WEST COAST TRUCK  
POWER OPTIONS  
WILL NOT LAST  
SHARP LOOKING TRUCK!  
DONT SNOOZE AND LOSE THIS ONE !

\$29,500  
CALL/TEXT ZACH 609-504-8808

## Installed Options

### Interior

- Color-keyed bench seat-inc: vinyl trim, folding seatback, head restraints
- ETR AM/FM stereo w/front door speakers
- "Maintenance Required"/"brake"/"low oil"/"check engine"/"anti-lock brake" warning lights
- 10" interior day/night rearview mirror- Black 2-spoke steering wheel w/horn pad
- Black front floor mat w/bright door opening retainer- Cigar lighter
- Color-keyed dual vinyl sun visors- Color-keyed full length door trim panels w/armrests
- Color-keyed instrument panel w/ash receiver & non-locking glove box
- Dash/plenum insulation liners- Digital clock
- Fasten seat belts/key-in-ignition/headlamps-on warning buzzer
- Full fabric covered hardboard headliner- Hood release in cab
- Voltmeter, trip odometer, oil pressure/engine temp gauges

### Exterior

- 2-spnd elect windshield wipers- Bright front bumper
- Bright grille w/bright insert & "Dodge" letters- Dual bright 5" X 7" exterior mirrors
- Galvanized steel corrosion protection- Polyurethane lower body anti-chip protection
- Premium paint w/clear topcoat finish- Tinted glass (all windows) w/moveable front vents

### Mechanical

- (4) LT215/85R16D all-season BSW SBR tires- 5-speed manual transmission
- 5.2L (318) "MAGNUM" MPI 8-cyl engine
- "Ram Trac" pwr shift 4WD system w/NP241 2-spnd synchronized Shift-On-The-Fly transfer case (w/o pwr take-off provision)
- (4) 16" X 6.0" 8-stud plain argent steel wheels - 2970# maximum payload
- 30 gallon fuel tank- 3300# capacity axle jack- 3500# front/5500# rear axle capacities
- 4 bright hub caps- 4.10 axle ratio- 600-amp maintenance-free battery
- 75-amp alternator- 7500# GVW pkg
- 8' box w/double wall construction/2-tier loading/easy-off tailgate
- Aluminized steel exhaust system- Elect ignition system
- Exhaust emission control system- HD gas-filled shock absorbers
- High strength (36,000 psi) carbon steel frame- Pwr front disc/anti-lock rear drum brakes
- Pwr recirculating-ball steering
- Removeable tailgate w/caliper latches & color-keyed "Dodge Ram" decal
- Solid live axle suspension w/leaf spring

King of Cars and Trucks

King of Cars and Trucks

View this car on our website at [njtruckking.com/7025958](http://njtruckking.com/7025958)

Website: [njtruckking.com](http://njtruckking.com)

Phone: [856-693-3181](tel:856-693-3181)

Map: [1229 Broadway, Westville, New Jersey 08093](#)

