



2019 Chevrolet Express Cargo Van

Our Price \$42,999

View this vehicle on our website at palaceautosales.com

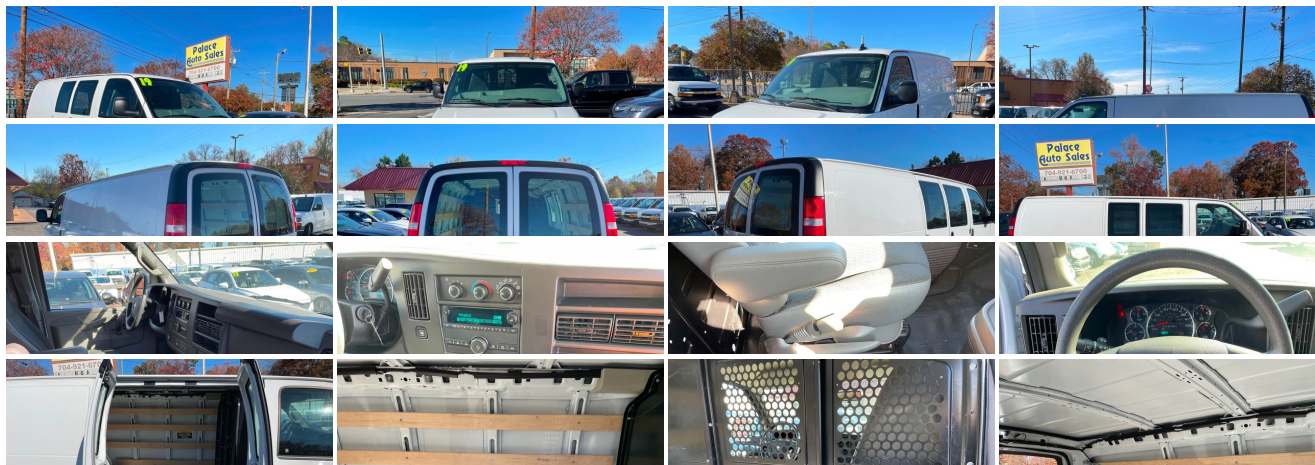
(704) 921-6700

4104 N. Tryon St. , CHARLOTTE, North Carolina 28206

Photos

Details

Contact





Specifications:

Year:	2019
VIN:	1GCWGAFG5K1341455
Make:	Chevrolet
Stock:	P14463
Model/Trim:	Express Cargo Van
Condition:	Pre-Owned
Body:	Minivan/Van
Exterior:	Summit White
Engine:	ENGINE, VORTEC 6.0L V8 SFI FLEXFUEL
Interior:	Gray
Transmission:	Automatic
Mileage:	18,710
Drivetrain:	Rear Wheel Drive

Vehicle Description

PRICES LISTED ARE CASH PRICES; FINANCING AVAILABLE. FOR YOUR CONVENIENCE, NO-HAGGLE PRICING. Prices listed exclude additional applicable fees. FOR MORE PICTURES AND DETAILS LOG ONTO OUR WEBSITE: WWW.PALACEAUTOSALES.COM

Installed Options

Interior

- Air conditioning, single-zone manual (Not available with (R6G) air conditioning delete.)
- Door locks, power with lock-out protection (Included with (ZQ2) Power Convenience Package. NOTE: Does not include (ATG) Remote Keyless Entry. (ATG) Remote Keyless Entry must be ordered separately.)
- Driver Information Center includes fuel range, average speed, oil life, tire pressure monitoring, fuel used, ice warning, engine hours, average fuel economy, tachometer, and maintenance reminders. Compass and outside temperature available if equipped.
- Mirror, inside rearview includes Rear Vision Camera display - Power outlet, 120-volt
- Power outlets, 2 auxiliary on engine console cover with covers, 12-volt
- Seating arrangement, driver and front passenger high-back buckets with head restraints and vinyl or cloth trim (Not available with (AJ3) driver-side only frontal airbag.)
- Seats, front bucket with vinyl trim and outboard head restraints, includes inboard armrests. (Requires (**W) interior trim. Includes (DAA) driver and front passenger vinyl visors.)
- Windows, power (Included with (ZQ2) Power Convenience Package.)
- Assist handles, driver and right-front passenger
- Cargo tie-downs 6 D-ring attachments on cargo area floor (Not available with (Y3H) Paratransit Package, (5BV) Upfitter electrical provisions or (ZP6) 5-passenger Express Crew Van.)
- Console, engine cover with open storage bin
- Cup holders, 3 on the engine console cover - Defogger, side windows
- Floor covering, full-length Black rubberized-vinyl (Not available with (RFM) rear floor covering delete, (5BV) Upfitter electrical or (PCH) Hotel Shuttle Package.)
- Headliner, cloth, over driver and passenger
- Instrumentation, analog with speedometer, odometer with trip odometer, fuel level, voltmeter, engine temperature and oil pressure
- Lighting, interior with 4 dome lights 1 overhead and 3 LED's on cross members in cargo area, includes defeat switch and door handle-activated switches
- Oil life monitor
- Steering wheel, steel sleeve column with theft-deterrent locking feature, Black
- Theft-deterrent system, vehicle, PASS-Key III
- Tow/haul mode selector, instrument panel-mounted
- Trim panels, hinged rear side doors and hinged rear doors (Not available with (Y3H) Paratransit Package or (5BV) Upfitter electrical provisions.)
- Visors, driver and front passenger, cloth, padded
- Warning tones, headlamp on and key-in-ignition

Option Packages

Factory Installed Packages

ENGINE, VORTEC 6.0L V8 SFI FLEXFUEL (341 hp [254.3 kW] @ 5400 rpm, 373 lb-ft of torque [503.6 N-m] @ 4200 rpm)	\$995
--	-------

Option Packages Total	\$995
-----------------------	-------

Exterior

- Tire, spare LT245/75R16E all-season, blackwall located at rear underbody of vehicle
- Wheels, 4 - 16" x 6.5" (40.6 cm x 16.5 cm) steel includes Gray center caps and steel spare
- Bumpers, front and rear painted Black with step-pad
- Door, swing-out passenger-side, 60/40 split - Glass, Solar-Ray light-tinted, all windows
- Headlamps, dual halogen composite- Mirrors, outside manual, Black
- Tires, front LT245/75R16E all-season, blackwall
- Tires, rear LT245/75R16E all-season, blackwall
- Wipers, front intermittent wet-arm with pulse washers

Safety

- Air conditioning, single-zone manual (Not available with (R6G) air conditioning delete.)
- Door locks, power with lock-out protection (Included with (ZQ2) Power Convenience Package. NOTE: Does not include (ATG) Remote Keyless Entry. (ATG) Remote Keyless Entry must be ordered separately.)
- Driver Information Center includes fuel range, average speed, oil life, tire pressure monitoring, fuel used, ice warning, engine hours, average fuel economy, tachometer, and maintenance reminders. Compass and outside temperature available if equipped.
- Mirror, inside rearview includes Rear Vision Camera display - Power outlet, 120-volt
- Power outlets, 2 auxiliary on engine console cover with covers, 12-volt
- Seating arrangement, driver and front passenger high-back buckets with head restraints and vinyl or cloth trim (Not available with (AJ3) driver-side only frontal airbag.)
- Seats, front bucket with vinyl trim and outboard head restraints, includes inboard armrests. (Requires (**W) interior trim. Includes (DAA) driver and front passenger vinyl visors.)
- Windows, power (Included with (ZQ2) Power Convenience Package.)
- Assist handles, driver and right-front passenger
- Cargo tie-downs 6 D-ring attachments on cargo area floor (Not available with (Y3H) Paratransit Package, (5BV) Upfitter electrical provisions or (ZP6) 5-passenger Express Crew Van.)
- Console, engine cover with open storage bin
- Cup holders, 3 on the engine console cover - Defogger, side windows
- Floor covering, full-length Black rubberized-vinyl (Not available with (RFM) rear floor covering delete, (5BV) Upfitter electrical or (PCH) Hotel Shuttle Package.)
- Headliner, cloth, over driver and passenger
- Instrumentation, analog with speedometer, odometer with trip odometer, fuel level, voltmeter, engine temperature and oil pressure
- Lighting, interior with 4 dome lights 1 overhead and 3 LED's on cross members in cargo area, includes defeat switch and door handle-activated switches
- Oil life monitor
- Steering wheel, steel sleeve column with theft-deterrent locking feature, Black
- Theft-deterrent system, vehicle, PASS-Key III
- Tow/haul mode selector, instrument panel-mounted
- Trim panels, hinged rear side doors and hinged rear doors (Not available with (Y3H) Paratransit Package or (5BV) Upfitter electrical provisions.)
- Visors, driver and front passenger, cloth, padded
- Warning tones, headlamp on and key-in-ignition

Mechanical

- Engine, 4.3L V6 with Direct Injection and Variable Valve Timing, includes aluminum block construction (276 hp [206 kW] @ 5200 rpm, 298 lb-ft of torque [404 Nm] @ 3900 rpm) (Reference the Engine/Axle page for availability.)
- Transmission, 8-speed automatic, electronically controlled with overdrive and tow/haul mode, includes Cruise Grade Braking and Powertrain Grade Braking (Requires (LV1) 4.3L V6 SIDI engine or (LWN) 2.8L Duramax Turbo-Diesel engine.)
- Alternator, 105 amps (Not available with (Y3H) Paratransit Package, (C69) rear air conditioning, (9L7) Wiring junction block equipment accessory, (5BV) Upfitter electrical provisions or (LWN) 2.8L Duramax Turbo-Diesel engine.)
- Battery, 600 cold-cranking amps, maintenance-free with rundown protection and retained accessory power
- Body, standard- Brakes, 4-wheel antilock, 4-wheel disc
- Cooling, external engine oil cooler (Not available with (LWN) 2.8L Duamax Turbo-Diesel engine.)
- Exhaust, aluminized stainless-steel muffler and tailpipe
- Frame, full-length box ladder-type
- Fuel tank capacity, mid-frame and approximately 31 gallons (117.3L)
- GVWR, 8600 lbs. (3901 kg) (Reference the Engine/Axle page for availability.)
- Rear axle, 3.42 ratio (Reference the Engine/Axle page for availability.)
- Rear wheel drive- Steering, power
- Suspension, front independent with coil springs and stabilizer bar
- Suspension, rear hypoid drive axle with multi-leaf springs
- Transmission oil cooler, external (Not available with (LWN) 2.8L Duramax Turbo-Diesel engine.)

MPG based on 2008 -2009 EPA mileage estimates, reflecting new EPA fuel economy methods beginning with 2008 models. Use for comparison purposes only. Do not compare to models before 2008. Your actual mileage will vary depending on how you drive and maintain your vehicle.

Palace Auto Sales

View this car on our website at palaceautosales.com/7025947

Website: palaceautosales.com

Phone: (704) 921-6700

Map: [4104 N. Tryon St., CHARLOTTE, North Carolina 28206](#)

