

# 2022 F-150 Hybrid Lariat 7.2KW PRO POWER ONBOARD



281-378-3176  
22702 TX-249  
Tomball, TX 77375

## 2022 Ford F-150 LARIAT

**Our Price \$37,111**

**Retail Value \$39,000**

View this vehicle on our website at [askjorgelopez.com](http://askjorgelopez.com)

Ask Jorge Lopez

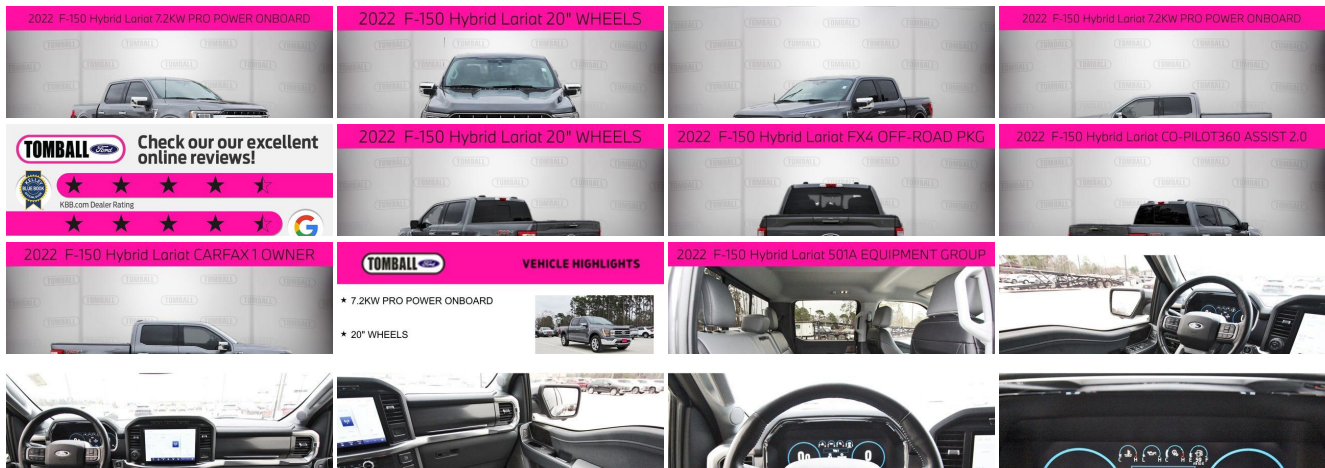
[281-205-0352](tel:281-205-0352)

22702 Tomball Parkway , Tomball, TX 77375

Photos

Details

Contact





## Specifications:

<b>Year:</b>	2022
<b>VIN:</b>	1FTFW1ED9NFA26725
<b>Make:</b>	Ford
<b>Stock:</b>	NFA26725
<b>Model/Trim:</b>	F-150 LARIAT
<b>Condition:</b>	Pre-Owned
<b>Body:</b>	Pickup Truck
<b>Exterior:</b>	CARBONIZED GRAY
<b>Engine:</b>	ENGINE: 3.5L POWERBOOST FULL-HYBRID V6
<b>Interior:</b>	LEATHER BUCKET SEATS W/CONSOLE MEDIUM DARK SLATE Leather
<b>Mileage:</b>	75,172
<b>Drivetrain:</b>	4 Wheel Drive
<b>Economy:</b>	City 18 / Highway 24

## Vehicle Description

7.2KW PRO POWER ONBOARD, 20" WHEELS, FX4 OFF-ROAD PKG, CO-PILOT360 ASSIST 2.0, CARFAX 1 OWNER, 501A EQUIPMENT GROUP.

The 2022 Ford F-150 Lariat 4X4 SuperCrew in Carbonized Gray Metallic is a high-performance, full-hybrid truck built for power, efficiency, and versatility. Equipped with the 3.5L PowerBoost?? Hybrid Engine, advanced towing capabilities, and premium luxury features, this truck is perfect for both work and play.

Added Features & Optional Equipment:  
 ??? Equipment Group 501A ??? \$1,270

Lariat Series  
 B&O Sound System with 8 Speakers  
 ??? 3.5L PowerBoost?? Full Hybrid Engine ??? \$3,300  
 ??? Ford Co-Pilot360?? Assist 2.0 ??? \$750  
 Connected Built-in Navigation (3-Year Plan Included)  
 ??? Pro Power Onboard ??? 7.2kW ??? \$750  
 ??? Trailer Tow Package ??? \$1,090  
 Integrated Trailer Brake Controller  
 ??? FX4 Off-Road Package ??? \$1,005  
 Skid Plates  
 ??? 20??? Chrome-Like PVD Wheels ??? \$1,395  
 ??? Bed Utility Package ??? \$995  
 BoxLink???

Power Tailgate  
 Tailgate Step  
 LED Box Lighting  
 ??? 360-Degree Camera Package ??? \$765  
 ??? Lariat Chrome Appearance Package ??? \$1,695  
 6??? Bright Polished Running Boards  
 ??? Leather-Trimmed Bucket Seats with Console ??? \$650

Technology & Entertainment Features:  
 SYNC?? 4 with 12??? Touchscreen & Apple CarPlay??/Android Auto???

FordPass???

Connect 4G Wi-Fi Hotspot  
 B&O?? Sound System with 8 Speakers  
 SiriusXM?? with 360L  
 12??? Productivity Digital Instrument Cluster  
 Ambient Interior Lighting

Advanced Safety & Driver-Assist Features:  
 Ford Co-Pilot360???

Technology Suite  
 Blind Spot Information System (BLIS??) with Cross-Traffic Alert  
 Lane-Keeping System

Pre-Collision Assist with Automatic Emergency Braking  
 Reverse Brake Assist  
 Post-Collision Braking  
 Reverse Sensing System  
 360-Degree Camera Package for Enhanced Visibility  
 Intelligent Adaptive Cruise Control  
 Advanced Security Pack  
 SOS Post-Crash Alert System???  
 Tire Pressure Monitoring System  
 Interior Comfort & Convenience Features:  
 Heated & Ventilated Front Leather Seats  
 Power Adjustable Pedals with Memory  
 Power Sliding Rear Window with Defrost & Privacy Tint  
 Leather-Wrapped Steering Wheel  
 Dual-Zone Automatic Climate Control  
 10-Way Power Driver???'s Seat & Multi-Adjustable Power Passenger Seat  
 60/40 Split Fold-Up Rear Bench Seat  
 Exterior Features & Utility:  
 LED Headlamps & Fog Lamps  
 Power-Folding Heated Side Mirrors  
 Zone Lighting for Enhanced Visibility  
 Trailer Sway Control for Towing Stability  
 Fully Boxed High-Strength Steel Frame  
 6???' Bright Polished Running Boards (Lariat Chrome Package)  
 Performance & Capability:  
 3.5L PowerBoost??' Full Hybrid V6 Engine (Best-in-Class Horsepower & Torque)  
 Hybrid Electric 10-Speed Automatic Transmission  
 7.2kW Pro Power Onboard ??? Mobile Generator Capability  
 3.73 Electronic Locking Rear Axle  
 FX4 Off-Road Package for Rugged Terrain Handling  
 Class IV Trailer Hitch with Smart Trailer Tow Connector


**Why Choose the 2022 Ford F-150 Lariat Hybrid 4X4?**


The 2022 Ford F-150 Lariat Hybrid 4X4 SuperCrew delivers an exceptional combination of power, luxury, and technology. Whether you're tackling tough jobs, heading off-road, or cruising in comfort, this truck is built to handle it all with hybrid efficiency and class-leading performance.


???? Come test drive this powerhouse today and see why it???'s the ultimate work-and-play truck!


**Vehicle History Report : as Of 05/17/2025**


**CARFAX**  
 Snapshot  
**2022 FORD F-150 LARIAT**


 No accidents or damage reported to CARFAX


 **8** Service history records

 **1** CARFAX 1-Owner vehicle

 Personal vehicle

 Last owned in Texas

 **75,264** Last reported odometer reading



**Installed Options**

**Interior**

- Leather-Trimmed 40/20/40 Front Seat -inc: heated and ventilated 10-way power driver and passenger w/power lumbar and memory driver's seat
- Manual Tilt/Telescoping Steering Column
- Gauges -inc: Speedometer, Odometer, Voltmeter, Oil Pressure, Engine Coolant Temp, Tachometer, Transmission Fluid Temp, Trip Odometer and Trip Computer
- Power Rear Windows
- Remote Keyless Entry w/Integrated Key Transmitter, Illuminated Entry and Panic Button
- Proximity Key For Doors And Push Button Start
- Full Carpet Floor Covering -inc: Carpet Front And Rear Floor Mats
- Smart Device Remote Engine Start- Door Mirrors and Pedals
- FOB Controls -inc: Cargo Access and Remote Engine Start
- SYNC 4 Connected Navigation Integrated Navigation System w/Voice Activation
- SYNC 4 w/Enhanced Voice Recognition -inc: 12" LCD capacitive touchscreen w/swipe capability, information on demand panel, wireless phone connection, cloud connected, AppLink w/App catalog, 911 Assist, Apple CarPlay and Android Auto compatibility, digital owners manual, conversational voice command recognition and connected navigation, Note: Navigation services require SYNC@4 and FordPass Connect (optional on select vehicles), complimentary connect service and the FordPass app (see FordPass Terms for details), Customer receives a complimentary 90-day trial of navigation services when an eligible vehicle is added to a member's FordPass account, Trial period begins on the new vehicle warranty start date, At the end of the complimentary period, navigation service will terminate, Connected service and features depend on compatible AT&T network availability, Evolving technology/cellular networks/vehicle capability may limit functionality and prevent operation of connected features, FordPass App, compatible w/select smartphone platforms, is available via a download, Message and data rates may apply
- Power 1st Row Windows w/Driver And Passenger 1-Touch Up/Down
- Power Door Locks w/Autolock Feature- Trip Computer
- Seats w/Leatherette Back Material- Driver Seat- Passenger Seat
- 60-40 Folding Split-Bench Front Facing Fold-Up Cushion Rear Seat
- FordPass Connect 4G Mobile Hotspot Internet Access
- Leather/Metal-Look Steering Wheel- Front Cupholder- Rear Cupholder- Compass
- Keypad- Remote Releases -Inc: Keyfob Cargo Access

## FREE CARFAX Report

See the full CARFAX Report for additional information

\*carfax Snapshot is a reflection of available information on the date the report was pulled. carfax is constantly being updated with new information and is subject to change at any time.

- Cruise Control w/Steering Wheel Controls- HVAC -inc: Underseat Ducts
- Dual Zone Front Automatic Air Conditioning- Locking Glove Box- Full Cloth Headliner
- Urethane Gear Shifter Material
- Interior Trim -inc: Metal-Look Instrument Panel Insert, Cabback Insulator, Metal-Look Door Panel Insert and Chrome/Metal-Look Interior Accents
- Day-Night Auto-Dimming Rearview Mirror
- Driver And Passenger Visor Vanity Mirrors w/Driver And Passenger Illumination
- Full Overhead Console w/Storage and 1 12V DC Power Outlet
- Fade-To-Off Interior Lighting- Front And Rear Map Lights- Pickup Cargo Box Lights
- Instrument Panel Bin, Dashboard Storage, Driver / Passenger And Rear Door Bins, Locking 1st Row Underseat Storage and 2nd Row Underseat Storage
- Delayed Accessory Power- Power Adjustable Pedals- Outside Temp Gauge
- Redundant Digital Speedometer- Digital/Analog Appearance
- 2 Seatback Storage Pockets
- Manual Adjustable Front Head Restraints and Manual Adjustable Rear Head Restraints
- Front Center Armrest w/Storage and Rear Center Armrest
- Securilock Anti-Theft Ignition (pats) Engine Immobilizer- Perimeter Alarm
- 1 12V DC Power Outlet

## Exterior

- Wheels: 18" Machined-Aluminum -inc: magnetic painted pockets
- Tires: 275/65R18 BSW A/T- Full-Size Spare Tire Stored Underbody w/Crankdown
- Chrome Front Bumper w/Body-Colored Rub Strip/Fascia Accent and 2 Tow Hooks
- Body-Colored Power Heated Side Mirrors w/Driver Auto Dimming, Power Folding and Turn Signal Indicator
- Variable Intermittent Wipers- Tailgate/Rear Door Lock Included w/Power Door Locks
- Ford Co-Pilot360 - Autolamp Auto On/Off Aero-Composite Led Low/High Beam Auto High-Beam Daytime Running Lights Preference Setting Headlamps w/Delay-Off
- Regular Box Style- Steel Spare Wheel- Clearcoat Paint- Chrome Rear Step Bumper
- Black Side Windows Trim and Black Front Windshield Trim
- Body-Colored Wheel Well Trim- Body-Colored Door Handles
- Power Rear Window w/Defroster- Deep Tinted Glass- Aluminum Panels
- Black Grille w/Chrome Accents- Tailgate Rear Cargo Access
- Cargo Lamp w/High Mount Stop Light- Front Fog Lamps- Perimeter/Approach Lights
- Headlights-Automatic Highbeams- LED Brakelights

## Safety

- Leather-Trimmed 40/20/40 Front Seat -inc: heated and ventilated 10-way power driver and passenger w/power lumbar and memory driver's seat
- Manual Tilt/Telescoping Steering Column
- Gauges -inc: Speedometer, Odometer, Voltmeter, Oil Pressure, Engine Coolant Temp, Tachometer, Transmission Fluid Temp, Trip Odometer and Trip Computer
- Power Rear Windows
- Remote Keyless Entry w/Integrated Key Transmitter, Illuminated Entry and Panic Button
- Proximity Key For Doors And Push Button Start
- Full Carpet Floor Covering -inc: Carpet Front And Rear Floor Mats
- Smart Device Remote Engine Start- Door Mirrors and Pedals
- FOB Controls -inc: Cargo Access and Remote Engine Start
- SYNC 4 Connected Navigation Integrated Navigation System w/Voice Activation
- SYNC 4 w/Enhanced Voice Recognition -inc: 12" LCD capacitive touchscreen w/swipe capability, information on demand panel, wireless phone connection, cloud connected, AppLink w/App catalog, 911 Assist, Apple CarPlay and Android Auto compatibility, digital owners manual, conversational voice command recognition and connected navigation, Note: Navigation services require SYNC@4 and FordPass Connect (optional on select vehicles), complimentary connect service and the FordPass app (see FordPass Terms for details). Customer receives a complimentary 90-day trial of navigation services when an eligible vehicle is added to a member's FordPass account. Trial period begins on the new vehicle warranty start date. At the end of the complimentary period, navigation service will terminate. Connected service and features depend on compatible AT&T network availability. Evolving technology/cellular networks/vehicle capability may limit functionality and prevent operation of connected features, FordPass App, compatible w/select smartphone platforms, is available via a download. Message and data rates may apply
- Power 1st Row Windows w/Driver And Passenger 1-Touch Up/Down
- Power Door Locks w/Autolock Feature- Trip Computer
- Seats w/Leatherette Back Material- Driver Seat- Passenger Seat
- 60-40 Folding Split-Bench Front Facing Fold-Up Cushion Rear Seat
- FordPass Connect 4G Mobile Hotspot Internet Access
- Leather/Metal-Look Steering Wheel- Front Cupholder- Rear Cupholder- Compass
- Keypad- Remote Releases -Inc: Keyfob Cargo Access
- Cruise Control w/Steering Wheel Controls- HVAC -inc: Underseat Ducts
- Dual Zone Front Automatic Air Conditioning- Locking Glove Box- Full Cloth Headliner
- Urethane Gear Shifter Material
- Interior Trim -inc: Metal-Look Instrument Panel Insert, Cabback Insulator, Metal-Look Door Panel Insert and Chrome/Metal-Look Interior Accents

- Door Panel Insert and Chrome/Metal-Look Interior Accents
- Day-Night Auto-Dimming Rearview Mirror
- Driver And Passenger Visor Vanity Mirrors w/Driver And Passenger Illumination
- Full Overhead Console w/Storage and 1 12V DC Power Outlet
- Fade-To-Off Interior Lighting- Front And Rear Map Lights- Pickup Cargo Box Lights
- Instrument Panel Bin, Dashboard Storage, Driver / Passenger And Rear Door Bins, Locking 1st Row Underseat Storage and 2nd Row Underseat Storage
- Delayed Accessory Power- Power Adjustable Pedals- Outside Temp Gauge
- Redundant Digital Speedometer- Digital/Analog Appearance
- 2 Seatback Storage Pockets
- Manual Adjustable Front Head Restraints and Manual Adjustable Rear Head Restraints
- Front Center Armrest w/Storage and Rear Center Armrest
- Securilock Anti-Theft Ignition (pats) Engine Immobilizer- Perimeter Alarm
- 1 12V DC Power Outlet

## Mechanical

- Engine: 2.7L V6 EcoBoost -inc: auto start-stop technology
- Transmission: Electronic 10-Speed Automatic -inc: selectable drive modes: normal, ECO, sport, tow/haul, slippery, deep snow/sand and mud/rut
- 3.55 Axle Ratio- GVWR: 6,600 lbs Payload Package- Electronic Transfer Case
- Automatic Full-Time Four-Wheel Drive
- 70-Amp/Hr 610CCA Maintenance-Free Battery w/Run Down Protection
- 200 Amp Alternator- Towing Equipment -inc: Trailer Sway Control
- Class IV Trailer Hitch Receiver -inc: towing capability up to TBD lbs, on 3.3L V6 PFDI engine (99B) and 2.7L EcoBoost engine (99P) or up to TBD lbs, on 3.5L EcoBoost engine (998) and 5.0L V8 engine (995), 7/4-pin connector, class IV trailer hitch receiver, smart trailer tow connector ( BLIS w/trailer tow coverage where BLIS is available) Ordering the Trailer Tow Package does not include Integrated Brake Controller (67T). Integrated Brake Controller (67T) is a standalone option and must be ordered separately.
- 1760# Maximum Payload- Gas-Pressurized Shock Absorbers- Front Anti-Roll Bar
- Electric Power-Assist Steering- Single Stainless Steel Exhaust- 26 Gal. Fuel Tank
- Auto Locking Hubs- Double Wishbone Front Suspension w/Coil Springs
- Leaf Rear Suspension w/Leaf Springs
- 4-Wheel Disc Brakes w/4-Wheel ABS, Front And Rear Vented Discs, Brake Assist, Hill Hold Control and Electric Parking Brake

## Option Packages

### Factory Installed Packages

ENGINE: 3.5L POWERBOOST FULL-HYBRID V6 -inc: GVWR: 7,350 lbs Payload Package, Electronic Locking w/3.73 Axle Ratio,	\$3,300
Option Packages Total	\$3,300

Ask Jorge Lopez

Ask Jorge Lopez

View this car on our website at [askjorgelopez.com/7025846](http://askjorgelopez.com/7025846)

Website: [askjorgelopez.com](http://askjorgelopez.com)

Phone: [281-205-0352](tel:281-205-0352)

Map: [22702 Tomball Parkway, Tomball, TX 77375](#)

