



2007 FORD F550 DIESEL 4X4 XLT JERR-DAN SELF LOADER WRECKER LOW MILES

Our Price \$37,900

View this vehicle on our website at njtruckking.com

King of Cars and Trucks

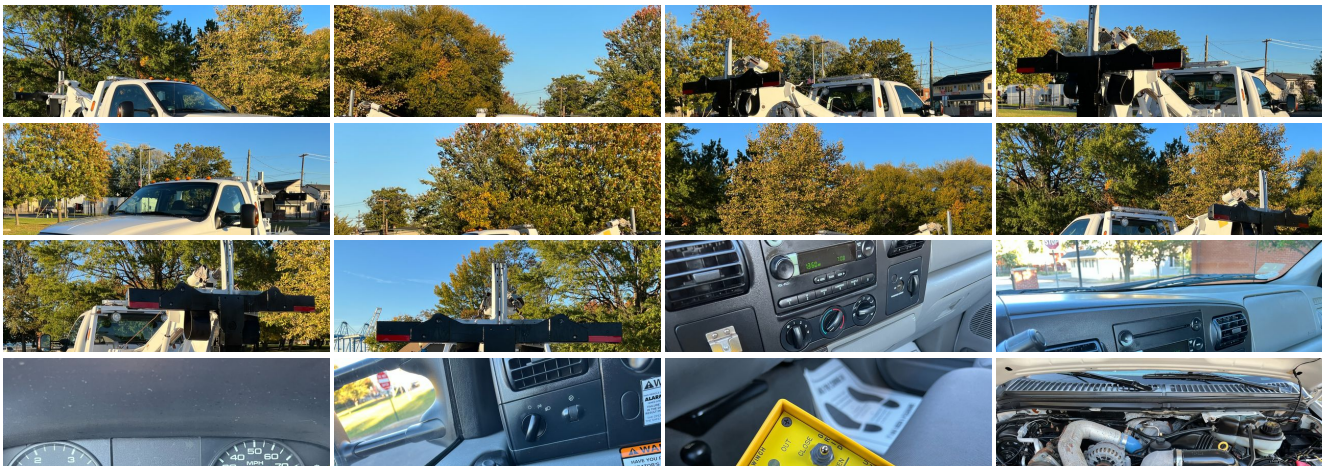
[856-693-3181](tel:856-693-3181)

1229 Broadway , Westville, New Jersey 08093

Photos

Details

Contact





Specifications:

Year:	2007
VIN:	1FDAF57P37EA73875
Make:	FORD F550 DIESEL 4X4
Model/Trim:	XLT JERR-DAN SELF LOADER WRECKER LOW MILES
Condition:	Pre-Owned
Body:	Pickup Truck
Exterior:	White
Engine:	6.0L DI V8 POWER STROKE TURBO-DIESEL ENGINE
Interior:	Gray Cloth
Mileage:	95,299
Drivetrain:	4 Wheel Drive

Vehicle Description

LOW MILE DIESEL 4X4 WRECKER

2007 FORD F-550 4X4
JERR-DAN TWIN LINE SELF LOADER
POWERSTROKE TURBO DIESEL
AUTOMATIC TRANSMISSION
(ONLY 95,299 ORIGINAL / ACTUAL MILES)
1-OWNER
ALWAYS SERVICED
BRAND NEW TIRES
POWER OPTIONS
RUNS AND DRIVES EXCELLENT AND TIGHT
READY TO WORK!
EXCELLENT SHAPE
WILL NOT LAST !

BUY IT NOW
\$37,900
CALL / TEXT ZACH 609-504-8808 WITH ANY QUESTIONS

Installed Options	Option Packages
<p>Interior</p> <ul style="list-style-type: none">- AM/FM stereo w/CD player-inc: digital clock, (4) speakers- Color-coordinated carpet floor mats- Cruise control- High series cloth 40/20/40 split bench seat-inc: center armrest, storage, cup holders, driver & front passenger manual lumbar support- Pwr door locks w/backlit switches- Tilt steering wheel w/cruise controls	<p>Factory Installed Packages</p> <hr/> <p>6.0L DI V8 POWER STROKE TURBO-DIESEL ENGINE -inc: 110-amp HD alternator, dual 78 amp/hr 750 CCA battery, turbo boost gauge, air filter minder</p> <hr/>

- 11.5" day/night rearview mirror- Accessory delay- Air conditioning- Auxiliary pwr point
- Behind seat storage trays- Black instrument cluster w/black gauges & white graphics
- Black vinyl steering wheel- Color-coordinated carpet full floor covering
- Color-coordinated cloth sun visors-inc: LH map strap, RH vanity mirror
- Color-coordinated door trim panel-inc: soft armrest/grab handle, reflector, molded upper applique, upper/lower map pockets
- Color-coordinated instrument panel w/glove box, dual cup holders, (4) air registers w/positive shutoff, ashtray & cigar lighter & (4) upfitter switches
- Color-coordinated molded cloth headliner- Color-coordinated scuff plates
- Dome lamp w/dual map lights- Dual color-coordinated coat hooks
- Dual front grab handles- Inside hood release
- Instrumentation-inc: tachometer, voltmeter, oil pressure/coolant temp/fuel gauges, indicator lights, message center w/odometer & trip meter, engine hour meter, warning messages
- Pwr windows-inc: driver side one-touch down feature, backlit switches
- Roof ride handles- Secondary glove box- Underhood service light

Exterior

- Black door handles- Bright grille w/chromed surround
- Chromed steel front bumper w/grained MIC top cover-inc: bumper extenders & front fender moldings
- Dual beam jewel effect headlight
- Manual telescoping trailer tow mirrors w/pwr heated glass, integrated clearance lights, turn signals & 2-way fold
- Roof clearance lights- Solar tinted glass- Variable intermittent windshield wipers

Safety

- AM/FM stereo w/CD player-inc: digital clock, (4) speakers
- Color-coordinated carpet floor mats- Cruise control
- High series cloth 40/20/40 split bench seat-inc: center armrest, storage, cup holders, driver & front passenger manual lumbar support
- Pwr door locks w/backlit switches- Tilt steering wheel w/cruise controls
- 11.5" day/night rearview mirror- Accessory delay- Air conditioning- Auxiliary pwr point
- Behind seat storage trays- Black instrument cluster w/black gauges & white graphics
- Black vinyl steering wheel- Color-coordinated carpet full floor covering
- Color-coordinated cloth sun visors-inc: LH map strap, RH vanity mirror
- Color-coordinated door trim panel-inc: soft armrest/grab handle, reflector, molded upper applique, upper/lower map pockets
- Color-coordinated instrument panel w/glove box, dual cup holders, (4) air registers w/positive shutoff, ashtray & cigar lighter & (4) upfitter switches
- Color-coordinated molded cloth headliner- Color-coordinated scuff plates
- Dome lamp w/dual map lights- Dual color-coordinated coat hooks
- Dual front grab handles- Inside hood release
- Instrumentation-inc: tachometer, voltmeter, oil pressure/coolant temp/fuel gauges, indicator lights, message center w/odometer & trip meter, engine hour meter, warning messages
- Pwr windows-inc: driver side one-touch down feature, backlit switches
- Roof ride handles- Secondary glove box- Underhood service light

Mechanical

- (6) 225/70R19.5F all-season BSW Continental tires- 4-wheel anti-lock brakes
- 6.8L 30-valve SOHC EFI Triton V10 engine
- TorqShift 5-speed automatic transmission w/OD & tow/haul mode- (2) front tow hooks
- 115-amp HD alternator- 141" wheelbase- 19.5" argent steel wheels
- 4.88 rear axle ratio- 7-wire trailer tow harness w/relays, blunt cut & labeled
- 78 amp/hr maintenance-free battery
- Engine block heater *STD in AK, CO, IA, ME, MN, MT, ND, SD, WI & WY*
- Four wheel drive- Front/rear stabilizer bars- HD gas shock absorbers
- Manual transfer case & hubs- Pwr 4-wheel disc brakes w/hydro-boost
- Pwr steering w/steering damper- Stationary elevated idle control (SEIC)
- Wide-axle twin-coil mono-beam front suspension

Option Packages Total

\$4,950

King of Cars and Trucks

King of Cars and Trucks

View this car on our website at njtruckking.com/7025385

Website: njtruckking.com

Phone: 856-693-3181

Map: [1229 Broadway, Westville, New Jersey 08093](#)

