



2016 Ram 2500 Laramie

Our Price \$51,922

View this vehicle on our website at parksdeals.com

Parks Chevrolet, Inc.

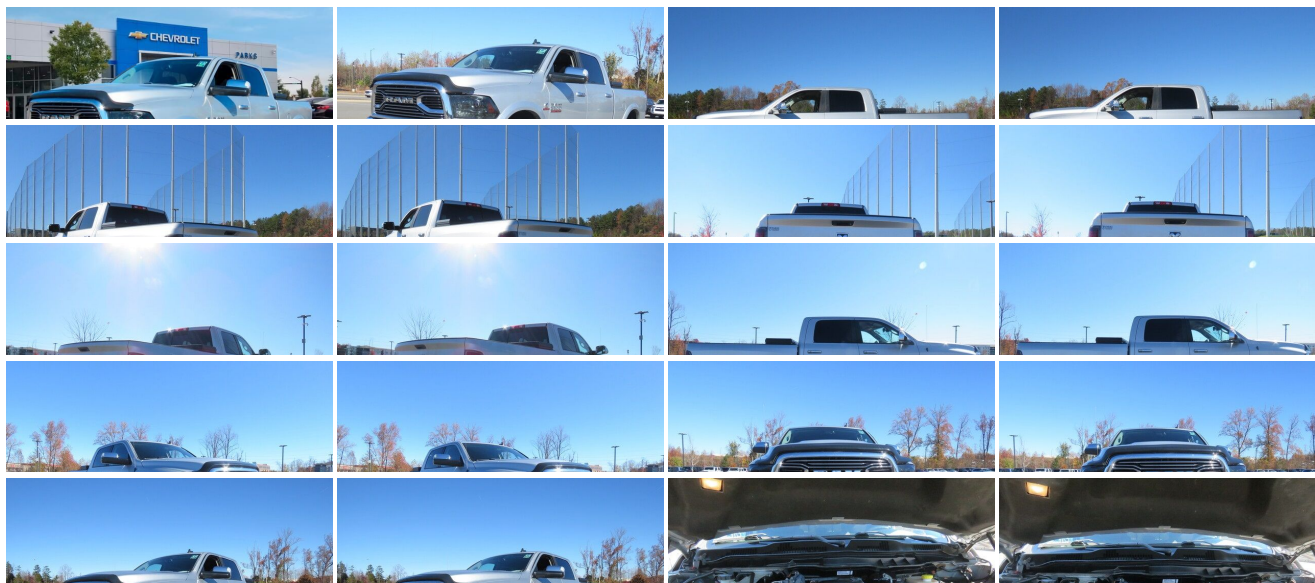
[833-825-2763](tel:833-825-2763)

615 NC-66 South, Kernersville, NC 27284

[Photos](#)

[Details](#)

[Contact](#)



Specifications:

Year:	2016
VIN:	3C6UR5FL4GG172826
Make:	Ram
Stock:	2C3469
Model/Trim:	2500 Laramie
Condition:	Pre-Owned
Body:	Pickup Truck
Exterior:	Bright Silver Metallic Clearcoat
Engine:	ENGINE: 6.7L I6 CUMMINS TURBO DIESEL
Interior:	Black Leather
Mileage:	95,390
Drivetrain:	4 Wheel Drive

Vehicle Description

2016 Ram 2500 Laramie

LIFTED TRUCK!!!

Clean CARFAX.

Call 704.288.0662 to check on the availability of this vehicle and schedule a private showing or shop 24 hours a day @ WWW.PARKSCHARLOTTE.COM. *All prices are plus tax, tag, title, and documentation. All vehicles are fully reconditioned by a Master ASE Factory Trained Certified Technician.

Installed Options	Option Packages
<div>Interior<div><ul style="list-style-type: none">- Heated Front Seats- 60-40 Folding Split-Bench Front Facing Fold-Up Cushion Rear Seat- Gauges -inc: Speedometer, Odometer, Voltmeter, Oil Pressure, Engine Coolant Temp, Tachometer, Oil Temperature, Transmission Fluid Temp, Engine Hour Meter, Trip Odometer and Trip Computer- Power Rear Windows- Remote Keyless Entry w/Integrated Key Transmitter, Illuminated Entry and Panic Button- Leather Trim 40/20/40 Bench Seat- Memory Settings -inc: Driver Seat, Door Mirrors and Audio- Power Door Locks w/Autolock Feature- Power 1st Row Windows w/Driver And Passenger 1-Touch Up/Down - Trip Computer- Driver Seat- Passenger Seat- Manual Tilt Steering Column- Voice Recorder- Mobile Hotspot Internet Access- Heated Leather Steering Wheel- Rear Cupholder- Compass- Valet Function- Garage Door Transmitter- Cruise Control w/Steering Wheel Controls- HVAC -inc: Underseat Ducts and Console Ducts- Dual Zone Front Automatic Air Conditioning w/Front Infrared - Illuminated Glove Box- Full Cloth Headliner- Urethane Gear Shifter Material- Interior Trim -inc: Simulated Wood/Metal-Look Instrument Panel Insert, Simulated Wood/Metal-Look Door Panel Insert and Chrome/Metal-Look Interior Accents- Day-Night Auto-Dimming Rearview Mirror- Driver And Passenger Visor Vanity Mirrors w/Driver And Passenger Illumination- Mini Overhead Console and 3 12V DC Power Outlets- Front Map Lights- Fade-To-Off Interior Lighting- Full Carpet Floor Covering -inc: Carpet Front And Rear Floor Mats- Cargo Area Concealed Storage- Underhood And Pickup Cargo Box Lights- Smart Device Integration- Instrument Panel Bin, Dashboard Storage, Driver / Passenger And Rear Door Bins, 1st Row Underseat Storage and 2nd Row Underseat Storage- Delayed Accessory Power- 115V Auxiliary Power Outlet- Systems Monitor- Redundant Digital Speedometer- Outside Temp Gauge- Analog Appearance- Manual Adjustable Front Head Restraints and Manual Adjustable Rear Head Restraints- Rear Center Armrest- 2 Seatback Storage Pockets- Sentry Key Engine Immobilizer</div></div>	<div>Factory Installed Packages<div><div>ENGINE: 6.7L I6 CUMMINS TURBO DIESEL</div><div><div>-inc: Selective Catalytic Reduction (Urea), 180 Amp Alternator, Cummins Turbo Diesel Badge, Electronically Controlled Throttle, Tow Hooks, Current Generation Engine Controller, Diesel Exhaust Brake, 5.5 Additional Gallons of Diesel, GVWR: 10,000 lbs, RAM Active Air, Front Bumper Sight Shields</div><div>\$8,995</div></div></div><div><div>Option Packages Total</div><div>\$8,995</div></div></div>

- Rear Center Armrest- 2 Seatback Storage Pockets- Sentry Key Engine Immobilizer
- Perimeter Alarm- 3 12V DC Power Outlets

Exterior

- Wheels: 18" x 8.0" Polished Aluminum- Tires: LT275/70R18E BSW AS
- Chrome Power w/Tilt Down Heated Side Mirrors w/Driver Auto Dimming, Power Folding and Turn Signal Indicator
- Variable Intermittent Wipers- Manual Tailgate/Rear Door Lock- Regular Box Style
- Steel Spare Wheel- Full-Size Spare Tire Stored Underbody w/Crankdown
- Clearcoat Paint- Chrome Front Bumper- Chrome Rear Step Bumper
- Black Side Windows Trim and Black Front Windshield Trim - Chrome Door Handles
- Power Rear Window- Deep Tinted Glass- Fully Galvanized Steel Panels
- Chrome Grille- Front License Plate Bracket- Tailgate Rear Cargo Access
- Cargo Lamp w/High Mount Stop Light
- Auto On/Off Projector Beam Halogen Headlamps w/Delay-Off- Front Fog Lamps
- Perimeter/Approach Lights- LED Brakelights- Vendor Painted Cargo Box Tracking

Safety

- Heated Front Seats
- 60/40 Folding Split-Bench Front Facing Fold-Up Cushion Rear Seat
- Gauges -inc: Speedometer, Odometer, Voltmeter, Oil Pressure, Engine Coolant Temp, Tachometer, Oil Temperature, Transmission Fluid Temp, Engine Hour Meter, Trip Odometer and Trip Computer
- Power Rear Windows
- Remote Keyless Entry w/Integrated Key Transmitter, Illuminated Entry and Panic Button
- Leather Trim 40/20/40 Bench Seat
- Memory Settings -inc: Driver Seat, Door Mirrors and Audio
- Power Door Locks w/Autolock Feature
- Power 1st Row Windows w/Driver And Passenger 1-Touch Up/Down - Trip Computer
- Driver Seat- Passenger Seat- Manual Tilt Steering Column- Voice Recorder
- Mobile Hotspot Internet Access- Heated Leather Steering Wheel- Rear Cupholder
- Compass- Valet Function- Garage Door Transmitter
- Cruise Control w/Steering Wheel Controls
- HVAC -inc: Underseat Ducts and Console Ducts
- Dual Zone Front Automatic Air Conditioning w/Front Infrared - Illuminated Glove Box
- Full Cloth Headliner- Urethane Gear Shifter Material
- Interior Trim -inc: Simulated Wood/Metal-Look Instrument Panel Insert, Simulated Wood/Metal-Look Door Panel Insert and Chrome/Metal-Look Interior Accents
- Day-Night Auto-Dimming Rearview Mirror
- Driver And Passenger Visor Vanity Mirrors w/Driver And Passenger Illumination
- Mini Overhead Console and 3 12V DC Power Outlets- Front Map Lights
- Fade-To-Off Interior Lighting
- Full Carpet Floor Covering -inc: Carpet Front And Rear Floor Mats
- Cargo Area Concealed Storage- Underhood And Pickup Cargo Box Lights
- Smart Device Integration
- Instrument Panel Bin, Dashboard Storage, Driver / Passenger And Rear Door Bins, 1st Row Underseat Storage and 2nd Row Underseat Storage
- Delayed Accessory Power- 115V Auxiliary Power Outlet- Systems Monitor
- Redundant Digital Speedometer- Outside Temp Gauge- Analog Appearance
- Manual Adjustable Front Head Restraints and Manual Adjustable Rear Head Restraints
- Rear Center Armrest- 2 Seatback Storage Pockets- Sentry Key Engine Immobilizer
- Perimeter Alarm- 3 12V DC Power Outlets

Mechanical

- Engine: 5.7L V8 HEMI VVT- Transmission: 6-Speed Automatic (66RFE)
- Transmission w/Driver Selectable Mode, Sequential Shift Control and Oil Cooler
- Class V Towing Equipment -inc: Hitch, Brake Controller and Trailer Sway Control
- 3.73 Rear Axle Ratio- GVWR: 9,000 lbs- 50 State Emissions
- Part-Time Four-Wheel Drive- Electronic Transfer Case
- 730CCA Maintenance-Free Battery w/Run Down Protection- 160 Amp Alternator
- Trailer Wiring Harness- 2180# Maximum Payload- HD Shock Absorbers
- Front Anti-Roll Bar- HD Suspension- Hydraulic Power-Assist Steering
- Single Stainless Steel Exhaust- 31 Gal. Fuel Tank- Auto Locking Hubs
- Multi-Link Front Suspension w/Coil Springs- Multi-Link Rear Suspension w/Coil Springs
- 4-Wheel Disc Brakes w/4-Wheel ABS, Front And Rear Vented Discs, Brake Assist and Hill Hold Control

Parks Chevrolet, Inc.

Parks Chevrolet, Inc.

View this car on our website at parksdeals.com/7025059

Website: parksdeals.com

Phone: 833-825-2763

Map: 615 NC-66 South, Kernersville, NC 27284

