



2014 BMW 428i xDrive 428i xDrive

Our Price \$18,306

View this vehicle on our website at makmotorsports.com



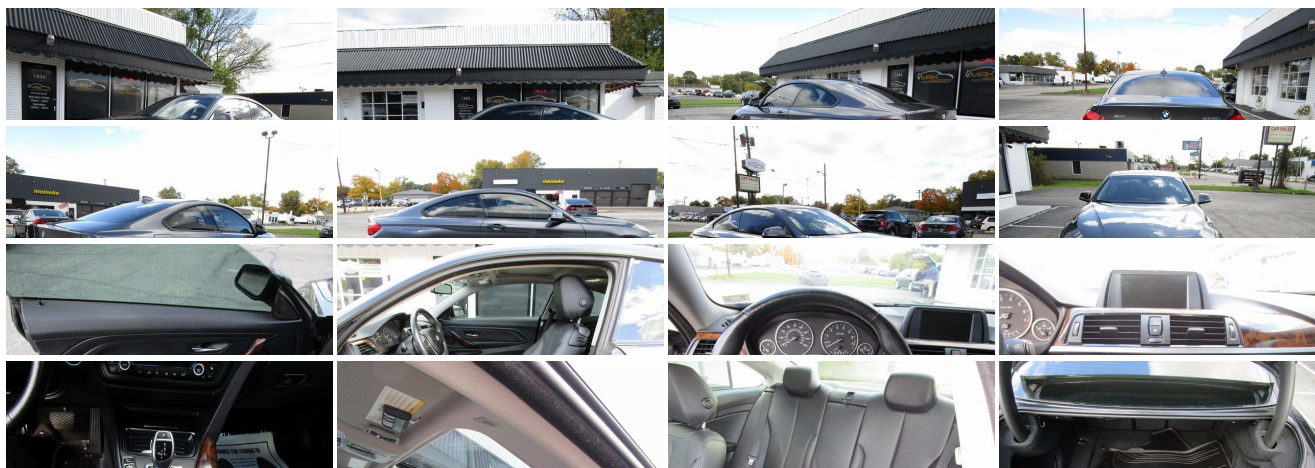
855-562-5668

1444 S 10th St, Noblesville, IN 46060

Photos

Details

Contact





Specifications:

Year:	2014
VIN:	WBA3N9C50EF720281
Make:	BMW
Stock:	1067
Model/Trim:	428i xDrive 428i xDrive
Condition:	Pre-Owned
Body:	Coupe
Exterior:	Mineral Grey Metallic
Engine:	Engine: 2.0L DOHC 16-Valve 4-Cylinder Turbocharged -inc: aluminum engine block, high precision direct injection, Valvetronic, Double-VANOS steplessly variable valve timing and electronic throttle control
Interior:	Black
Mileage:	80,200
Drivetrain:	All Wheel Drive
Economy:	City 22 / Highway 33

Vehicle Description

2014 BMW 4 Series 428i xDrive Mineral Grey Metallic AWD 2.0L 4-Cylinder DOHC 16V Turbocharged 8-Speed Automatic Reviews:

* If you want to be seen in a prestigious 2-door sports car with German badge appeal and performance chops, get ready to be among the first to own the new 4 Series. Drivers who live where it snows will be happy to know all-wheel-drive versions are part of the lineup, convertibles included. Source: KBB.com

* Engaging handling; powerful and fuel-efficient engines; upscale interior with straightforward controls and spacious seating. Source: Edmunds

* The supped-up 2014 BMW 4 Series is a beauty and its superior design and dynamics make it one of a kind. It is lengthier, lower, and wider than the 3 Series coupe, and has an added two inches of wheelbase. The 4 Series still boasts an athletic appeal, but with recast quad-headlamps, available LED units, understated air curtain slots and air breathers to create an effortless drive (especially with its new 50/50 weight distribution that creates the lowest center of gravity of all BMW models). The exterior hides wind-cheating underbody fairings as well. The interior continues to radiate the BMW charm with their exclusive materials now in base, Sport, Limited, and M Sport trims. A leather-wrapped steering wheel, aluminum-intensive suspension hardware, and seats designed for extreme comfort create a cocoon of safety for all enclosed. Servotronic power steering and driver-centric placement of the ergonomically-enhanced console and driving functions make this a car custom-made for the driver. In the rear, the 40/20/40 flat-folding bench allows for extended cargo space to get the biggest bang out of the ride. Also new to 2014, the auto start/stop function and brake energy regeneration to get the most efficient drive possible. TwinPower Turbo engine choices give oomph to the eight-speed automatic transmission with a speed topping off at 155mph on all levels of the 4 Series. For the tech side, BMW offers Teleservice, the latest iDrive 4.2 system, Radio BMW Professional, optional navigation with touchpad, and available Head-up display. Additional safety features include airbags, fog lights, and dynamic brake lights. Source: The Manufacturer Summary

Awards:

* JD Power Automotive Performance, Execution and Layout (APEAL) Study

Clean CARFAX. Priced below KBB Fair Purchase Price! Odometer is 8700 miles below market average!

Installed Options

Interior

- Front Bucket Seats
- 8-Way Power Driver Seat -inc: Power Recline, Height Adjustment, Fore/Aft Movement, Cushion Tilt and Power Rear Seat Easy Entry
- 8-Way Power Passenger Seat -inc: Power Recline, Height Adjustment, Fore/Aft Movement, Cushion Tilt and Power Rear Seat Easy Entry
- Gauges -inc: Speedometer, Odometer, Tachometer, Oil Temperature, Trip Odometer and Trip Computer
- MyInfo Selective Service Internet Access- Sport Leather Steering Wheel
- Proximity Key For Push Button Start Only
- Remote Keyless Entry w/Integrated Key Transmitter, 2 Door Curb/Courtesy and Illuminated Entry
- Dual Zone Front Automatic Air Conditioning- Rear HVAC w/Separate Controls

- Interior Trim -inc: Genuine Wood/Metal-Look Instrument Panel Insert, Genuine Wood Door Panel Insert, Genuine Wood Console Insert and Metal-Look Interior Accents
- SensaTec Leatherette Upholstery
- FOB Controls -inc: Cargo Access, Windows and Sunroof/Convertible Roof
- Power Door Locks w/Autolock Feature- Trip Computer
- 40-20-40 Folding Bench Front Facing Fold Forward Seatback Rear Seat
- Manual Tilt/Telescoping Steering Column- Fixed Rear Windows- Front Cupholder
- Rear Cupholder- Interior Lock Disable- Valet Function- Power Fuel Flap Locking Type
- Remote Releases -Inc: Power Cargo Access- Garage Door Transmitter
- Cruise Control w/Steering Wheel Controls
- HVAC -inc: Underseat Ducts, Residual Heat Recirculation and Console Ducts
- Illuminated Locking Glove Box- Driver Foot Rest- Full Cloth Headliner
- Leatherette Door Trim Insert- Leather/Metal-Look Gear Shifter Material
- Day-Night Auto-Dimming Rearview Mirror
- Driver And Passenger Visor Vanity Mirrors w/Driver And Passenger Illumination
- Full Floor Console w/Covered Storage, Rear Console w/Storage and 4 12V DC Power Outlets
- Front And Rear Map Lights- Fade-To-Off Interior Lighting
- Full Carpet Floor Covering -inc: Carpet Front And Rear Floor Mats
- Carpet Floor Trim and Carpet Trunk Lid/Rear Cargo Door Trim
- Cargo Area Concealed Storage- Cargo Space Lights
- Memory Settings -inc: Driver Seat and Door Mirrors - Tracker System
- Driver And Passenger Door Bins
- Power 1st Row Windows w/Driver And Passenger 1-Touch Up/Down
- Delayed Accessory Power- Systems Monitor- Outside Temp Gauge
- Analog Appearance
- Manual Anti-Whiplash Adjustable Front Head Restraints and Manual Adjustable Rear Head Restraints
- Sliding Front Center Armrest and Rear Center Armrest- 2 Seatback Storage Pockets
- Engine Immobilizer- 4 12V DC Power Outlets- Air Filtration

Exterior

- Wheels: 17 x 7.5 Lt Alloy Star-Spoke (Style 393) - Tires: P225/50R17 All Season
- Tailgate/Rear Door Lock Included w/Power Door Locks- Front Fog Lamps
- Wheels w/Silver Accents- Clearcoat Paint
- Express Open/Close Sliding And Tilting Glass 1st Row Sunroof w/Sunshade
- Body-Colored Front Bumper- Body-Colored Rear Bumper
- Black Side Windows Trim and Black Front Windshield Trim
- Body-Colored Door Handles
- Body-Colored Power Heated Auto Dimming Side Mirrors w/Power Folding and Turn Signal Indicator
- Fixed Rear Window w/Defroster- Light Tinted Glass
- Speed Sensitive Rain Detecting Variable Intermittent Wipers w/Heated Jets
- Front Windshield -inc: Sun Visor Strip- Fully Galvanized Steel Panels
- Black Grille w/Chrome Surround- Trunk Rear Cargo Access
- Auto On/Off Projector Beam High Intensity Low/High Beam Daytime Running Auto-Leveling Directionally Adaptive Headlamps w/Delay-Off
- Perimeter/Approach Lights

Safety

- Front Bucket Seats
- 8-Way Power Driver Seat -inc: Power Recline, Height Adjustment, Fore/Aft Movement, Cushion Tilt and Power Rear Seat Easy Entry
- 8-Way Power Passenger Seat -inc: Power Recline, Height Adjustment, Fore/Aft Movement, Cushion Tilt and Power Rear Seat Easy Entry
- Gauges -inc: Speedometer, Odometer, Tachometer, Oil Temperature, Trip Odometer and Trip Computer
- MyInfo Selective Service Internet Access- Sport Leather Steering Wheel
- Proximity Key For Push Button Start Only
- Remote Keyless Entry w/Integrated Key Transmitter, 2 Door Curb/Courtesy and Illuminated Entry
- Dual Zone Front Automatic Air Conditioning- Rear HVAC w/Separate Controls
- Interior Trim -inc: Genuine Wood/Metal-Look Instrument Panel Insert, Genuine Wood Door Panel Insert, Genuine Wood Console Insert and Metal-Look Interior Accents
- SensaTec Leatherette Upholstery
- FOB Controls -inc: Cargo Access, Windows and Sunroof/Convertible Roof
- Power Door Locks w/Autolock Feature- Trip Computer
- 40-20-40 Folding Bench Front Facing Fold Forward Seatback Rear Seat
- Manual Tilt/Telescoping Steering Column- Fixed Rear Windows- Front Cupholder
- Rear Cupholder- Interior Lock Disable- Valet Function- Power Fuel Flap Locking Type
- Remote Releases -Inc: Power Cargo Access- Garage Door Transmitter
- Cruise Control w/Steering Wheel Controls
- HVAC -inc: Underseat Ducts, Residual Heat Recirculation and Console Ducts

- HVAC -inc: Underseat Ducts, Residual Heat Recirculation and Console Ducts
- Illuminated Locking Glove Box- Driver Foot Rest- Full Cloth Headliner
- Leatherette Door Trim Insert- Leather/Metal-Look Gear Shifter Material
- Day-Night Auto-Dimming Rearview Mirror
- Driver And Passenger Visor Vanity Mirrors w/Driver And Passenger Illumination
- Full Floor Console w/Covered Storage, Rear Console w/Storage and 4 12V DC Power Outlets
- Front And Rear Map Lights- Fade-To-Off Interior Lighting
- Full Carpet Floor Covering -inc: Carpet Front And Rear Floor Mats
- Carpet Floor Trim and Carpet Trunk Lid/Rear Cargo Door Trim
- Cargo Area Concealed Storage- Cargo Space Lights
- Memory Settings -inc: Driver Seat and Door Mirrors - Tracker System
- Driver And Passenger Door Bins
- Power 1st Row Windows w/Driver And Passenger 1-Touch Up/Down
- Delayed Accessory Power- Systems Monitor- Outside Temp Gauge
- Analog Appearance
- Manual Anti-Whiplash Adjustable Front Head Restraints and Manual Adjustable Rear Head Restraints
- Sliding Front Center Armrest and Rear Center Armrest- 2 Seatback Storage Pockets
- Engine Immobilizer- 4 12V DC Power Outlets- Air Filtration

Mechanical

- 4-Wheel Disc Brakes w/4-Wheel ABS, Front And Rear Vented Discs, Brake Assist and Hill Hold Control
- Engine: 2.0L DOHC 16-Valve 4-Cylinder Turbocharged -inc: aluminum engine block, high precision direct injection, Valvetronic, Double-VANOS steplessly variable valve timing and electronic throttle control
- Transmission: Sport Automatic w/Shift Paddles- Engine Auto Stop-Start Feature
- Transmission w/Driver Selectable Mode- Full-Time All-Wheel- 3.15 Axle Ratio
- 90-Amp/Hr 900CCA Maintenance-Free Battery- Regenerative 170 Amp Alternator
- Gas-Pressurized Shock Absorbers- Front And Rear Anti-Roll Bars
- Electric Power-Assist Speed-Sensing Steering- 15.8 Gal. Fuel Tank
- Single Stainless Steel Exhaust w/Chrome Tailpipe Finisher
- Strut Front Suspension w/Coil Springs- Multi-Link Rear Suspension w/Coil Springs

MAK Motorsports

MAK Motorsports

View this car on our website at makmotorsports.com/7024732

Website: makmotorsports.com

Phone: [855-562-5668](tel:855-562-5668)

Map: [1444 S 10th St, Noblesville, IN 46060](#)

