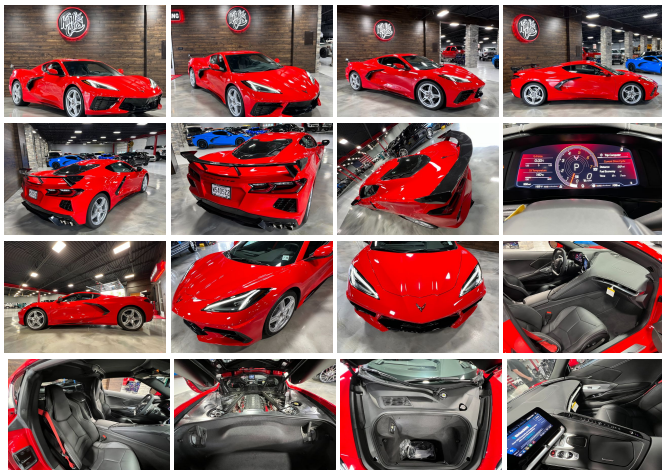


2021 CHEVROLET CORVETTE C8 1LT NEW ONLY 356 MILE

View this car on our website at njtruckking.com/7024427/ebrochure



Our Price **\$89,900**

Specifications:

Year:	2021
VIN:	1G1YA2D45M5117020
Make:	CHEVROLET CORVETTE C8
Model/Trim:	1LT NEW ONLY 356 MILE
Condition:	Pre-Owned
Body:	Coupe
Exterior:	Red
Engine:	ENGINE, 6.2L V8 DI, HIGH-OUTPUT
Interior:	Black
Mileage:	356
Drivetrain:	Rear Wheel Drive
Economy:	City 15 / Highway 27

C8 CORVETTE

2021 CHEVROLET CORVETTE C8

1LT

HIGH WING

(ONLY 356 ORIGINAL / ACTUAL MILES)

LIKE NEW!

WILL NOT LAST!

\$89900

CALL / TEXT ZACH 609-504-8808 WITH ANY QUESTIONS

Our Location :



2021 CHEVROLET CORVETTE C8 1LT NEW ONLY 356 MILE

King of Cars and Trucks - 856-693-3181 - View this car on our website at njtruckking.com/7024427/ebrochure

Installed Options

Interior

- Console, floor 2 covered cup holders, auxiliary power outlet, USB ports, auxiliary input jack and lockable storage
- Door locks, power programmable with lockout protection- Floor mats, carpeted
- Keyless Open and Start includes 2 remote transmitters that enable automatic door unlock and open by touching door switch
- Mulan leather seating surfaces with perforated inserts- Seats, GT1 bucket
- Theft-deterrent system, vehicle, push button start, immobilizer and audible visual alarm
- Air conditioning, dual-zone automatic climate control individual climate settings for driver and passenger, with outside temperature display
- Air filtration system with pollen filter
- Chevrolet Connected Access (Subject to terms. See onstar.com or dealer for details.)
- Cruise control, electronic with set and resume speed - Defogger, rear-window, electric
- Gauge cluster, 12" diagonal color with driver information display with multiple selectable modes and gauge configurations
- Hatch release, push button open - Lighting, interior, theater dimming
- Oil life monitoring system- Remote vehicle starter system
- Seat adjuster, driver 8-way power- Seat adjuster, passenger 8-way power
- Seat belt color, Black- Steering column, power tilt and telescopic
- Steering wheel controls, audio, voice recognition, cruise and Driver Information Center
- Steering wheel, leather-wrapped
- Vehicle health management provides advanced warning of vehicle issues
- Visors, driver and passenger illuminated vanity mirrors, covered
- Windows, power with driver and passenger Express-Down/Up

Exterior

- Roof panel, body-color, removable
- Tires, 245/35ZR19 front and 305/30ZR20 rear, blackwall, all-season, performance
- Wheels, 19" x 8.5" (48.3 cm x 21.6 cm) front and 20" x 11" (50.8 cm x 27.9 cm) rear 5-open-spoke Bright Silver-painted aluminum

Option Packages

Factory Installed Packages

ENGINE, 6.2L V8 DI, HIGH-OUTPUT

Variable Valve Timing (VVT), Active Fuel Management (AFM) (490 hp [365.4 kW] @ 6450 rpm, 465 lb-ft of torque [627.8 N-m] @ 5150 rpm)

- Carbon Flash Exterior Badge Package
- Exterior accents, Carbon Flash, side vents and front/rear grille accents
- Glass, Solar-Ray light-tinted- Headlamps, LED
- Mirrors, outside heated, power-adjustable, manual-folding with turn signal indicators
- Wipers, front intermittent

Safety

- Console, floor 2 covered cup holders, auxiliary power outlet, USB ports, auxiliary input jack and lockable storage
- Door locks, power programmable with lockout protection- Floor mats, carpeted
- Keyless Open and Start includes 2 remote transmitters that enable automatic door unlock and open by touching door switch
- Mulan leather seating surfaces with perforated inserts- Seats, GT1 bucket
- Theft-deterrent system, vehicle, push button start, immobilizer and audible visual alarm
- Air conditioning, dual-zone automatic climate control individual climate settings for driver and passenger, with outside temperature display
- Air filtration system with pollen filter
- Chevrolet Connected Access (Subject to terms. See onstar.com or dealer for details.)
- Cruise control, electronic with set and resume speed - Defogger, rear-window, electric
- Gauge cluster, 12" diagonal color with driver information display with multiple selectable modes and gauge configurations
- Hatch release, push button open - Lighting, interior, theater dimming
- Oil life monitoring system- Remote vehicle starter system
- Seat adjuster, driver 8-way power- Seat adjuster, passenger 8-way power
- Seat belt color, Black- Steering column, power tilt and telescopic
- Steering wheel controls, audio, voice recognition, cruise and Driver Information Center
- Steering wheel, leather-wrapped
- Vehicle health management provides advanced warning of vehicle issues
- Visors, driver and passenger illuminated vanity mirrors, covered
- Windows, power with driver and passenger Express-Down/Up

Mechanical

- Differential, mechanical limited-slip
- Transmission, 8-speed dual clutch, includes manual and auto modes
- Brakes, 4-wheel antilock, 4-wheel disc 12.6" (321 mm) front and 13.3" (339 mm) rear brake rotors
- Calipers, Black-painted
- Engine, 6.2L V8 DI, high-output Variable Valve Timing (VVT), Active Fuel Management (AFM) (490 hp [365.4 kW] @ 6450 rpm, 465 lb-ft of torque [627.8 N-m] @ 5150 rpm)
- Exhaust, aluminized stainless-steel with stainless-steel tips - Frame, aluminum structure
- Rear wheel drive- Steering, power, magnetic rack-and-pinion, variable assist
- Suspension, Corvette standard

King of Cars and Trucks

njtruckking.com

856-693-3181

1229 Broadway

Westville, New Jersey 08093

© 2024 AutoRevo - All rights reserved. - Powered by AutoRevo