



2021 CHEVROLET SUBURBAN RST 4WD SUV LOADED LIKE NEW ONLY 7K MILES

Our Price \$89,900

View this vehicle on our website at njtruckking.com

King of Cars and Trucks

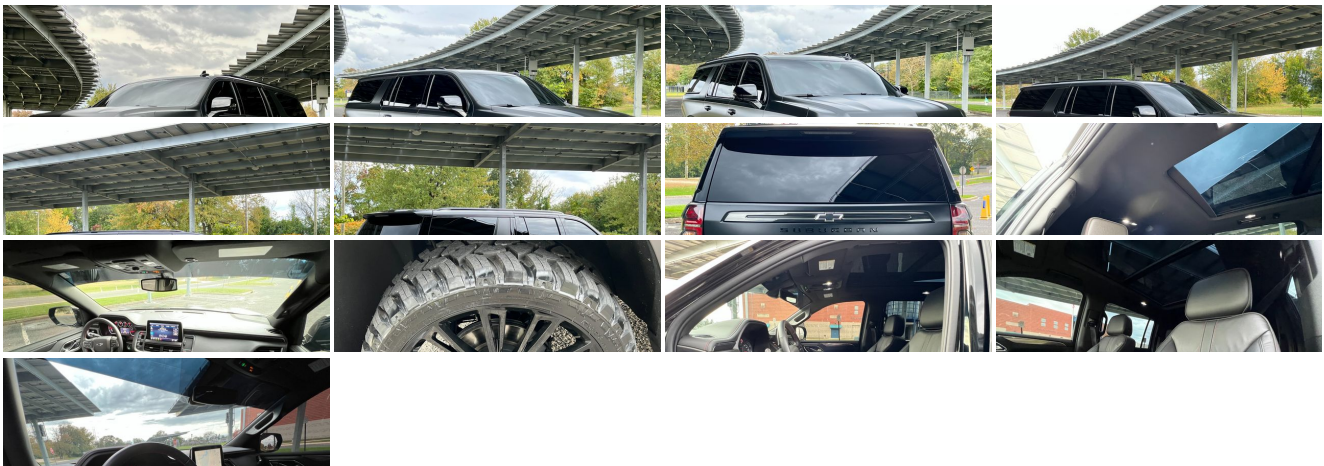
[856-693-3181](tel:856-693-3181)

1229 Broadway , Westville, New Jersey 08093

[Photos](#)

[Details](#)

[Contact](#)



Specifications:

Year:	2021
VIN:	1GNSKEKD6MR289703
Make:	CHEVROLET SUBURBAN RST
Model/Trim:	4WD SUV LOADED LIKE NEW ONLY 7K MILES
Condition:	Pre-Owned
Body:	SUV
Exterior:	Black
Engine:	ENGINE, 5.3L ECOTEC3 V8
Interior:	Black Leather
Mileage:	7,392
Drivetrain:	4 Wheel Drive
Economy:	City 15 / Highway 19

Vehicle Description

2021 CHEVROLET SUBURBAN RST PACKAGE

4X4
AUTOMATIC TRANSMISSION
(ONLY 7,392 ORIGINAL / ACTUAL MILES)
HARD LOADED
SHOWROOM CONDITION
NEW 24" ASANTI WHEELS
NEW 33" FURY TIRES
LEVELING KIT
FULL TINT
AVERYDENNISON SATIN BLACK WRAP
(BLACK UNDERNEATH)
3RD ROW SEATING!
ALL OPTIONS !
LIKE NEW!
DONT MISS IT!

BUY IT NOW!
\$89,900

Installed Options

Interior

- Air conditioning, rear
- Air conditioning, tri-zone automatic climate control with individual climate settings for driver, right front passenger and rear seat occupants
- Cruise control, electronic with set and resume speed
- Door locks, power programmable with lockout protection and delayed locking
- Floor mats, color-keyed carpeted first and second row, removable
- Keyless Open includes extended range Remote Keyless Entry
- Memory settings, recalls 2 "driver" presets for power driver seat
- Seat trim, perforated leather-appointed- Seats, front bucket
- Seats, second row 60/40 split-folding bench, manual
- Seats, third row 60/40 split-folding bench, manual
- Steering column, manual tilt and telescopic
- Steering wheel controls, mounted audio Driver Information Center, cruise control, Forward Collision Alert following gap button and heated steering wheel (when equipped)
- USB data ports 2, one type-A and one type-C, includes SD Card Reader, located within front center console (When (DCH) power-sliding center console is ordered, relocated within instrument panel.)
- USB data ports, 2, one type-A and one type-C, located within center console (Deleted when (DCH) power-sliding center console is ordered.)
- Window, power with driver Express-Up/Down
- Window, power with front passenger Express-Up/Down
- Windows, power with rear Express-Down
- Assist handles, front passenger A pillar and second row outboard B pillar

Option Packages

Factory Installed Packages

ENGINE, 5.3L ECOTEC3 V8
with Dynamic Fuel Management, Direct Injection
and Variable Valve Timing, includes aluminum
block construction (355 hp [265 kW] @ 5600
rpm, 383 lb-ft of torque [518 Nm] @ 4100 rpm)

- Assist handles, front passenger A-pillar and second row outboard B-pillar
- Assist handles, overhead, driver and front passenger, located in headliner
- Cargo management system
- Chevrolet Connected Access capable (Subject to terms. See onstar.com or dealer for details.)
- Console, floor with storage area and removable storage tray
- Defogger, rear-window electric
- Driver Information Center, 4.2" diagonal color display includes driver personalization
- Electronic Precision Shift- Floor covering, color-keyed carpeting
- Keyless start, push button
- Lighting, interior with dome light, driver- and passenger-side door switch with delayed entry feature, cargo lights, door handle or Remote Keyless Entry-activated illuminated entry and map lights in front and second seat positions
- Mirror, inside rearview auto-dimming
- Power outlet, front auxiliary, 12-volt, located in the center stack of instrument panel
- Power outlets, 2, 120-volt, located on the rear of the center console and rear cargo area
- Rear Seat Reminder- Remote start
- Seat adjusters, 10-way power includes 8-way power driver and front passenger seats with 2-way power lumbar
- Seats, heated driver and front passenger - Sill plates, bright, front and rear door
- Steering wheel, leather-wrapped- Theft-deterrent system, electrical, unauthorized entry
- USB charging-only ports, 4, (2) located on rear of center console and (2) in 3rd row
- Universal Home Remote includes garage door opener, programmable
- Visors, driver and front passenger illuminated vanity mirrors, sliding
- Wireless charging (Standard on vehicles built before 7-12-2021. Vehicles built on or after 7-12-2021, will have (00C) Not Equipped with Wireless Charging which removes Wireless Charging and its content. See dealer for details. The system wirelessly charges one compatible mobile device. Some phones have built-in wireless charging technology and others require a special adaptor/back cover. To check for phone or other device compatibility, see my.chevrolet.com/learnAbout/wireless-charging or consult your carrier.)

Exterior

- LPO, Wheel locks, set of 4 (dealer-installed) (Included with (SGF) 22" bright machined High-Gloss Black painted wheels. Not available with any LPO wheels. Note that LPO 22" wheels will come with wheel locks without the LPO code (SFE).)
- Luggage rack side rails, roof-mounted, Black
- Mirrors, outside heated power-adjustable, manual-folding, body-color
- Tire, spare P265/70R17 all-season, blackwall
- Wheel, full-size spare, 17" (43.2 cm) steel
- Wheels, 22" x 9" (55.9 cm x 22.9 cm) bright machined High-Gloss Black painted (Includes (SFE) wheel locks, LPO.)
- Active aero shutters, upper (Standard with (L84) 5.3L EcoTec3 V8 engine only.)
- Assist steps, Black with chrome accent strip (Includes Gloss Black accent strip.)
- Door handles, body-color- Fascia, front- Glass, acoustic, laminated
- Glass, deep-tinted (all windows, except light-tinted glass on windshield and driver- and front passenger-side glass)
- Glass, windshield shade band- Headlamps, LED
- IntelliBeam, automatic high beam on/off - Lamps, stop and tail, LED
- Liftgate, rear power programmable, hands-free with emblem projection
- Mirror caps, body-color
- Tire carrier, lockable outside spare, winch-type mounted under frame at rear
- Tires, 275/50R22SL all-season, blackwall- Wiper, rear intermittent with washer
- Wipers, front intermittent, Rainsense

Safety

- Air conditioning, rear
- Air conditioning, tri-zone automatic climate control with individual climate settings for driver, right front passenger and rear seat occupants
- Cruise control, electronic with set and resume speed
- Door locks, power programmable with lockout protection and delayed locking
- Floor mats, color-keyed carpeted first and second row, removable
- Keyless Open includes extended range Remote Keyless Entry
- Memory settings, recalls 2 "driver" presets for power driver seat
- Seat trim, perforated leather-appointed- Seats, front bucket
- Seats, second row 60/40 split-folding bench, manual
- Seats, third row 60/40 split-folding bench, manual
- Steering column, manual tilt and telescopic
- Steering wheel controls, mounted audio Driver Information Center, cruise control, Forward Collision Alert following gap button and heated steering wheel (when equipped)
- USB data ports 2, one type-A and one type-C, includes SD Card Reader, located within front center console (When (DCH) power-sliding center console is ordered, relocated within instrument panel.)
- USB data ports, 2, one type-A and one type-C, located within center console (Deleted when (DCH) power-sliding center console is ordered.)
- Window, power with driver Express-Up/Down

- Window, power with front passenger Express-Up/Down
- Windows, power with rear Express-Down
- Assist handles, front passenger A-pillar and second row outboard B-pillar
- Assist handles, overhead, driver and front passenger, located in headliner
- Cargo management system
- Chevrolet Connected Access capable (Subject to terms. See onstar.com or dealer for details.)
- Console, floor with storage area and removable storage tray
- Defogger, rear-window electric
- Driver Information Center, 4.2" diagonal color display includes driver personalization
- Electronic Precision Shift- Floor covering, color-keyed carpeting
- Keyless start, push button
- Lighting, interior with dome light, driver- and passenger-side door switch with delayed entry feature, cargo lights, door handle or Remote Keyless Entry-activated illuminated entry and map lights in front and second seat positions
- Mirror, inside rearview auto-dimming
- Power outlet, front auxiliary, 12-volt, located in the center stack of instrument panel
- Power outlets, 2, 120-volt, located on the rear of the center console and rear cargo area
- Rear Seat Reminder- Remote start
- Seat adjusters, 10-way power includes 8-way power driver and front passenger seats with 2-way power lumbar
- Seats, heated driver and front passenger - Sill plates, bright, front and rear door
- Steering wheel, leather-wrapped- Theft-deterrent system, electrical, unauthorized entry
- USB charging-only ports, 4, (2) located on rear of center console and (2) in 3rd row
- Universal Home Remote includes garage door opener, programmable
- Visors, driver and front passenger illuminated vanity mirrors, sliding
- Wireless charging (Standard on vehicles built before 7-12-2021. Vehicles built on or after 7-12-2021, will have (00C) Not Equipped with Wireless Charging which removes Wireless Charging and its content. See dealer for details. The system wirelessly charges one compatible mobile device. Some phones have built-in wireless charging technology and others require a special adaptor/back cover. To check for phone or other device compatibility, see my.chevrolet.com/learnAbout/wireless-charging or consult your carrier.)

Mechanical

- Fuel, gasoline, E15 (Standard with (L84) 5.3L EcoTec3 V8 engine only.)
- Transmission, 10-speed automatic electronically controlled with overdrive, includes Traction Select System including tow/haul (Most vehicles built on or after 6-7-2021 with a V8 engine will have (NSS) Not Equipped with Automatic Stop/Start, which removes Automatic Stop/Start, Engine control stop/start disable button and its content.)
- 4-wheel drive
- Alternator, 220 amps (Standard with (L84) 5.3L EcoTec3 V8 engine only.)
- Automatic Stop/Start (Standard on vehicles built before 6-7-2021. Most vehicles built on or after 6-7-2021 equipped with a V8 engine will have (NSS) Not Equipped with Automatic Stop/Start, which removes Automatic Stop/Start, Engine control stop/start disable button and its content. See dealer for details.)
- Battery, 800 cold-cranking amps with 80 amp hour rating (Standard with (L84) 5.3L EcoTec3 V8 engine only.)
- Brakes, 4-wheel antilock, 4-wheel disc with DURALIFE rotors
- Cooling, auxiliary transmission oil cooler, heavy-duty air-to-oil
- Cooling, external engine oil cooler, heavy-duty air-to-oil integral to driver side of radiator (Deleted when (LM2) Duramax 3.0L Turbo-Diesel I6 engine is ordered.)
- Differential, mechanical limited-slip- Engine air filtration monitor
- Engine control, stop/start system disable button, non-latching (Standard on vehicles built before 6-7-2021. Most vehicles built on or after 6-7-2021 equipped with a V8 engine will have (NSS) Not Equipped with Automatic Stop/Start, which removes Automatic Stop/Start, Engine control stop/start disable button and its content. See dealer for details.)
- Engine, 5.3L EcoTec3 V8 with Dynamic Fuel Management, Direct Injection and Variable Valve Timing, includes aluminum block construction (355 hp [265 kW] @ 5600 rpm, 383 lb-ft of torque [518 Nm] @ 4100 rpm)
- Exhaust, single system, single-outlet- GVWR, 7700 lbs. (3493 kg) (4WD models only.)
- Hitch Guidance- Mechanical Jack with tools- Rear axle, 3.23 ratio- Steering, power
- Suspension Package, Premium Smooth Ride
- Suspension, front coil-over-shock with stabilizer bar
- Suspension, rear multi-link with coil springs- Trailer sway control
- Trailering equipment includes trailering hitch platform, 7-wire harness with independent fused trailering circuits mated to a 7-way connector and 2" trailering receiver
- Transfer case, active, single-speed, electronic Autotrac does not include neutral. Cannot be dinghy towed (4WD models only. Deleted when (NHT) Max Trailering Package is ordered.)

View this car on our website at njtruckking.com/7024413

Website: njtruckking.com

Phone: [856-693-3181](tel:856-693-3181)

Map: [1229 Broadway, Westville, New Jersey 08093](#)

