

2021 FORD BRONCO FIRST EDITION SASQUATCH CACTUS GRAY NEW ONLY 253 MILES WOW!

View this car on our website at njtruckking.com/7024009/ebrochure



Our Price **\$104,900**

Specifications:

Year:	2021
VIN:	1FMEE5EP1MLA41036
Make:	FORD BRONCO FIRST EDITION
Model/Trim:	SASQUATCH CACTUS GRAY NEW ONLY 253 MILES WOW!
Condition:	Pre-Owned
Body:	SUV
Exterior:	Gray
Engine:	ENGINE: 2.7L ECOBOOST V6
Interior:	Black
Mileage:	253
Drivetrain:	4 Wheel Drive
Economy:	City 18 / Highway 20

2021 FORD BRONCO

FIRST EDITION SASQUATCH

CACTUS GRAY!

4X4

ALL OPTIONS

V6

AUTOMATIC TRANSMISSION

(ONLY 253 ORIGINAL / ACTUAL MILES)

SHOWROOM CONDITION

DONT MISS IT!

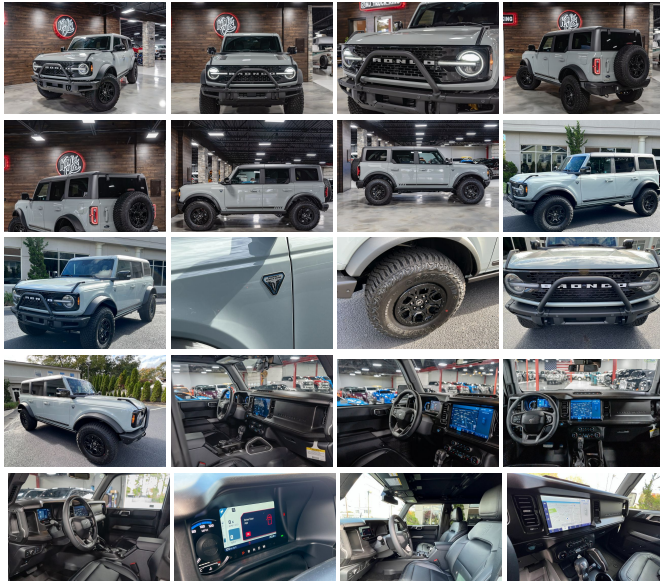
THE RIGHT COLOR!

RARE

BUY IT NOW

\$104900

CALL /TEXT ZACH 609-504-8808 WITH ANY QUESTIONS



2021 FORD BRONCO FIRST EDITION SASQUATCH CACTUS GRAY NEW ONLY 253 MILES WOW!
King of Cars and Trucks - 856-693-3181 - View this car on our website at njtruckking.com/7024009/ebrochure

Our Location :



2021 FORD BRONCO FIRST EDITION SASQUATCH CACTUS GRAY NEW ONLY 253 MILES WOW!
King of Cars and Trucks - 856-693-3181 - View this car on our website at njtruckking.com/7024009/ebrochure

Installed Options

Interior

- FOB Controls -inc: Remote Engine Start
- Gauges -inc: Speedometer, Odometer, Voltmeter, Engine Coolant Temp, Tachometer, Inclinometer, Trip Odometer and Trip Computer
- Heated Leather-Trimmed/Vinyl Bucket Seats -inc: 10-way power driver seat and 8-way front passenger seat
- Power 1st Row Windows w/Driver And Passenger 1-Touch Up/Down
- Power Door Locks w/Autolock Feature
- Power Rear Windows and Removable 3rd Row Windows
- Proximity Key For Doors And Push Button Start
- Remote Keyless Entry w/Integrated Key Transmitter, Illuminated Entry, Illuminated Ignition Switch and Panic Button
- Smart Device Remote Engine Start- Trip Computer- 2 Seatback Storage Pockets
- 3 12V DC Power Outlets- 3 12V DC Power Outlets and 1 120V AC Power Outlet
- 60-40 Folding Split-Bench Front Facing Manual Reclining Fold Forward Seatback Leather/Leatherette Rear Seat
- Air Filtration- Cargo Space Lights- Compass
- Connected Built-In Navigation -inc: 3 years of service, pinch-to-zoom capability, live traffic, predictive destinations and route guidance, Navigation service requires SYNC4 and FordPass Connect, complimentary connect service and the FordPass app (see FordPass Terms for details), Customer receives a complimentary 3-year trial of navigation services when an eligible vehicle is added to a member's FordPass account, Trial period begins w/new vehicle warranty start date, At the end of the complimentary period, access to connected navigation services will be discontinued, Connected service and features depend on compatible AT&T network availability, Evolving technology/cellular networks/vehicle capability may limit functionality and prevent operation of connected features, FordPass App, compatible w/select smartphone platforms, is available via a download, Message and data rates may apply
- Cruise Control w/Steering Wheel Controls
- Dashboard Storage, Driver / Passenger And Rear Door Bins and 2nd Row Underseat

Option Packages

Factory Installed Packages

ENGINE: 2.7L ECOBOOST V6
-inc: 4-wheel disc brakes w/Anti-Lock Brake System (ABS), electronic stability control and electric brake boost

Storage

- Day-Night Auto-Dimming Rearview Mirror- Delayed Accessory Power
- Digital/Analog Appearance- Distance Pacing w/Traffic Stop-Go
- Driver And Passenger Visor Vanity Mirrors w/Driver And Passenger Illumination, Driver And Passenger Auxiliary Mirror
- Driver Foot Rest- Driver Seat- Dual Zone Front Automatic Air Conditioning
- Engine Immobilizer- Fade-To-Off Interior Lighting
- Front Center Armrest and Rear Center Armrest- Front Cupholder- Front Map Lights
- Full Board Headliner
- Full Floor Console w/Locking Storage, Mini Overhead Console, 3 12V DC Power Outlets and 1 120V AC Power Outlet
- Full Vinyl/Rubber Floor Covering -inc: Carpet Front And Rear Floor Mats
- HVAC -inc: Underseat Ducts- Heated Leather/Metal-Look Steering Wheel
- Interior Trim -inc: Metal-Look Instrument Panel Insert, Metal-Look Door Panel Insert and Metal-Look Interior Accents
- Leather/Metal-Look Gear Shifter Material- Locking Glove Box
- Manual Adjustable Front Head Restraints and Foldable Rear Head Restraints
- Manual Tilt/Telescoping Steering Column- Outside Temp Gauge- Passenger Seat
- Perimeter Alarm- Rear Cupholder- Redundant Digital Speedometer- Systems Monitor
- Tracker System- Vinyl/Rubber Floor Trim

Exterior

- Black Front Bumper w/2 Tow Hooks and Black Brush Guard
- Black Rear Step Bumper w/2 Tow Hooks
- Flip-Up Rear Window w/Fixed Interval Wiper and Defroster
- Manual Convertible Hard Top w/Glass Rear Window and Fixed Roll-Over Protection
- Manual Targa Composite 1st Row Sunroof
- Removable Manual Fixed Composite 2nd Row Sunroof
- Tailgate/Rear Door Lock Included w/Power Door Locks- Aluminum Spare Wheel
- Black Fender Flares- Black Grille
- Black Power Heated Side Mirrors w/Convex Spotter, Manual Folding and Turn Signal Indicator
- Black Side Windows Trim- Body-Colored Door Handles- Clearcoat Paint w/Decal
- Conventional Rear Cargo Access- Deep Tinted Glass
- Ford Co-Pilot360 - Autolamp Auto On/Off Aero-Composite Led Low/High Beam Auto High-Beam Daytime Running Lights Preference Setting Headlamps w/Delay-Off
- Fully Galvanized Steel Panels- Headlights-Automatic Highbeams- LED Brakelights
- Perimeter/Approach Lights- Spare Tire Mounted Outside Rear
- Tires: LT315/70R17 Mud-Terrain -inc: full size spare tire w/TPMS
- Variable Intermittent Wipers
- Wheels: 17" Black High Gloss-Painted Aluminum -inc: black beauty ring and beadlock capable wheels

Safety

- FOB Controls -inc: Remote Engine Start
- Gauges -inc: Speedometer, Odometer, Voltmeter, Engine Coolant Temp, Tachometer, Inclinator, Trip Odometer and Trip Computer
- Heated Leather-Trimmed/Vinyl Bucket Seats -inc: 10-way power driver seat and 8-way front passenger seat
- Power 1st Row Windows w/Driver And Passenger 1-Touch Up/Down
- Power Door Locks w/Autolock Feature
- Power Rear Windows and Removable 3rd Row Windows
- Proximity Key For Doors And Push Button Start
- Remote Keyless Entry w/Integrated Key Transmitter, Illuminated Entry, Illuminated Ignition Switch and Panic Button
- Smart Device Remote Engine Start- Trip Computer- 2 Seatback Storage Pockets
- 3 12V DC Power Outlets- 3 12V DC Power Outlets and 1 120V AC Power Outlet
- 60-40 Folding Split-Bench Front Facing Manual Reclining Fold Forward Seatback Leather/Leatherette Rear Seat
- Air Filtration- Cargo Space Lights- Compass
- Connected Built-In Navigation -inc: 3 years of service, pinch-to-zoom capability, live traffic, predictive destinations and route guidance, Navigation service requires SYNC4 and FordPass Connect, complimentary connect service and the FordPass app (see FordPass Terms for details), Customer receives a complimentary 3-year trial of navigation services when an eligible vehicle is added to a member's FordPass account, Trial period begins w/new vehicle warranty start date, At the end of the complimentary period, access to connected navigation services will be discontinued, Connected service and features depend on compatible AT&T network availability, Evolving technology/cellular networks/vehicle capability may limit functionality and prevent operation of connected features, FordPass App, compatible w/select smartphone platforms, is available via a download, Message and data rates may apply
- Cruise Control w/Steering Wheel Controls
- Dashboard Storage, Driver / Passenger And Rear Door Bins and 2nd Row Underseat Storage
- Day-Night Auto-Dimming Rearview Mirror- Delayed Accessory Power

- Digital/Analog Appearance- Distance Pacing w/Traffic Stop-Go
- Driver And Passenger Visor Vanity Mirrors w/Driver And Passenger Illumination, Driver And Passenger Auxiliary Mirror
- Driver Foot Rest- Driver Seat- Dual Zone Front Automatic Air Conditioning
- Engine Immobilizer- Fade-To-Off Interior Lighting
- Front Center Armrest and Rear Center Armrest- Front Cupholder- Front Map Lights
- Full Board Headliner
- Full Floor Console w/Locking Storage, Mini Overhead Console, 3 12V DC Power Outlets and 1 120V AC Power Outlet
- Full Vinyl/Rubber Floor Covering -inc: Carpet Front And Rear Floor Mats
- HVAC -inc: Underseat Ducts- Heated Leather/Metal-Look Steering Wheel
- Interior Trim -inc: Metal-Look Instrument Panel Insert, Metal-Look Door Panel Insert and Metal-Look Interior Accents
- Leather/Metal-Look Gear Shifter Material- Locking Glove Box
- Manual Adjustable Front Head Restraints and Foldable Rear Head Restraints
- Manual Tilt/Telescoping Steering Column- Outside Temp Gauge- Passenger Seat
- Perimeter Alarm- Rear Cupholder- Redundant Digital Speedometer- Systems Monitor
- Tracker System- Vinyl/Rubber Floor Trim

Mechanical

- Driver Selectable Front Locking Differential- Driver Selectable Rear Locking Differential
- Transmission w/Driver Selectable Mode and Sequential Shift Control
- Transmission: 10-Speed Automatic -inc: trail control, trail turn assist and trail one-pedal driving
- 110-Amp/Hr 800CCA Maintenance-Free Battery w/Run Down Protection
- 20.8 Gal. Fuel Tank- 4.7 Axle Ratio- 50 State Emissions System- 6 Skid Plates
- Auto Locking Hubs- Bilstein Brand Name Shock Absorbers
- Brakes w/Front Vented Discs, Brake Assist, Hill Hold Control and Electric Parking Brake
- Electric Power-Assist Steering- Electronic Transfer Case- Engine Auto Stop-Start Feature
- Engine: 2.7L EcoBoost V6 -inc: 4-wheel disc brakes w/Anti-Lock Brake System (ABS), electronic stability control and electric brake boost
- Front Active w/Driver Control Anti-Roll Bar- GVWR: TBD
- Multi-Link Rear Suspension w/Coil Springs- Off-Road Suspension
- Part And Full-Time Four-Wheel Drive
- Short And Long Arm Front Suspension w/Coil Springs- Single Stainless Steel Exhaust
- Towing Equipment -inc: Trailer Sway Control- Upfitter Switches

King of Cars and Trucks

njtruckking.com

856-693-3181

1229 Broadway

Westville, New Jersey 08093

© 2024 AutoRevo - All rights reserved. - Powered by AutoRevo