



2021 Chevrolet Corvette 2LT

Our Price \$89,995

View this vehicle on our website at dakotamotor.com



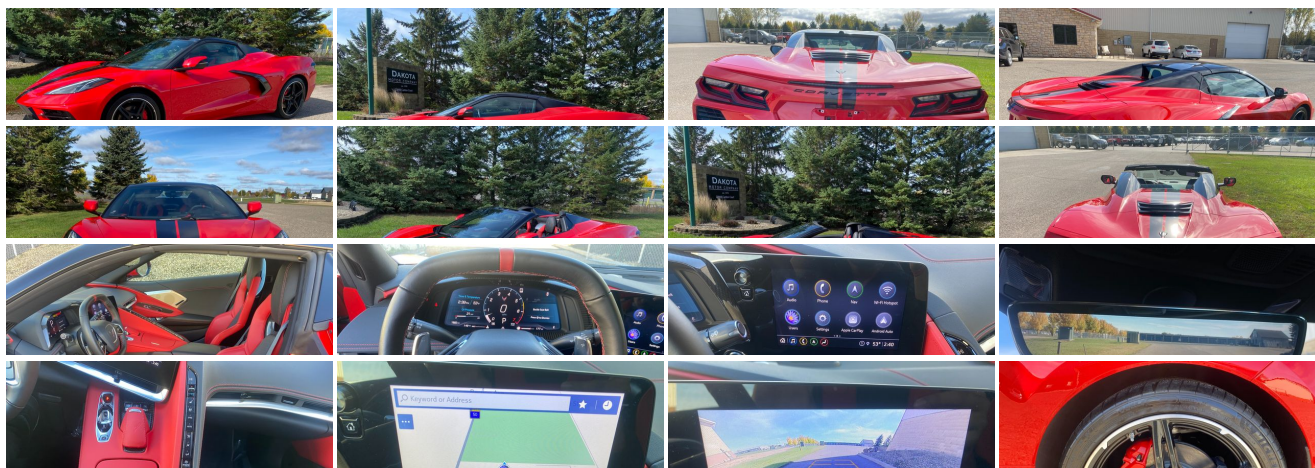
(651) 460-6655

22098 Canton Court , Farmington, MN 55024

Photos

Details

Contact



Specifications:

Year:	2021
VIN:	1G1YB3D49M5111417
Make:	Chevrolet
Model/Trim:	Corvette 2LT
Condition:	Pre-Owned
Body:	Convertible
Exterior:	Torch Red
Engine:	ENGINE, 6.2L V8 DI, HIGH-OUTPUT
Interior:	Red Leather
Mileage:	1,681
Drivetrain:	Rear Wheel Drive
Economy:	City 15 / Highway 27

Vehicle Description

LEATHER!!LOW MILES!! LOW PRICE!!NAVIGATION!!BACK UP CAM!!HEATED AND COOLED SEATS!!CONVERTIBLE!!

Check out our full line of inventory at DAKOTAMOTOR.COM

Call us anytime and ask for Bart or David and we will be happy to assist you. For your convenience please call before you come to be certain of availability. Full financing available. All of our vehicles have been checked by our in house service department. All of our vehicles are clean title and have actual miles. Enjoy our low overhead low price philosophy. We buy in bulk and sell at wholesale cost to save you the new car store markup!! 30years in wholesaling makes us retailing's smartest choice for a price savvy saver.

Installed Options

Interior

- Console, floor 2 covered cup holders, auxiliary power outlet, USB ports, auxiliary input jack and lockable storage
- Defogger, rear-window, electric
- Door locks, power programmable with lockout protection- Floor mats, carpeted
- Keyless Open and Start includes 2 remote transmitters that enable automatic door unlock and open by touching door switch
- Mulan leather seating surfaces with perforated inserts
- Rear Camera Mirror inside rearview auto-dimming with full camera display
- Seat adjuster, driver 8-way power- Seat adjuster, power driver lumbar control
- Seats, GT1 bucket- Theft deterrent sensor, vehicle inclination
- Theft deterrent sensor, vehicle interior movement
- Theft-deterrent system, electrical, unauthorized entry, activates the horn
- Theft-deterrent system, vehicle, push button start, immobilizer and audible visual alarm
- Air conditioning, dual-zone automatic climate control individual climate settings for driver and passenger, with outside temperature display
- Air filtration system with pollen filter- Cargo nets, 2
- Chevrolet Connected Access (Subject to terms. See onstar.com or dealer for details.)
- Cruise control, electronic with set and resume speed
- Gauge cluster, 12" diagonal color with driver information display with multiple selectable modes and gauge configurations
- Head-Up Display color display with 3 modes: tour, sport, track; can display speed, gear, tach, shift lights, turn signals, bright headlamps, turn-by-turn navigation, g-meter, speed limit, lap times
- Lighting, interior, theater dimming
- Memory Driver and Passenger Convenience Package includes steering wheel and outside mirrors plus seat memory for both driver and passenger; key fob or door button activated
- Oil life monitoring system- Remote vehicle starter system
- Seat adjuster, driver power bolster- Seat adjuster, passenger 8-way power
- Seat adjuster, passenger power bolster- Seat adjuster, power passenger lumbar control
- Seat belt color, Black- Seats, heated and vented driver and passenger
- Steering column, power tilt and telescopic
- Steering wheel controls, audio, voice recognition, cruise and Driver Information Center
- Steering wheel. heated- Steering wheel. leather-wrapped

Option Packages

Factory Installed Packages

ENGINE, 6.2L V8 DI, HIGH-OUTPUT

Variable Valve Timing (VVT), Active Fuel Management (AFM) (490 hp [365.4 kW] @ 6450 rpm, 465 lb-ft of torque [627.8 N-m] @ 5150 rpm)

Steering wheel, heated- Steering wheel, leather-wrapped

- Trunk release, push button open
- Universal Home Remote includes garage door opener, 3-channel programmable, located on driver visor
- Vehicle health management provides advanced warning of vehicle issues
- Visors, driver and passenger illuminated vanity mirrors, covered
- Windows, power with driver and passenger Express-Down/Up
- Wireless Charging for devices

Exterior

- Convertible top, retractable, power-folding hard top painted body-color roof, remote control (down only), includes power glass rear window with integral defogger
- Tires, 245/35ZR19 front and 305/30ZR20 rear, blackwall, all-season, performance
- Wheels, 19" x 8.5" (48.3 cm x 21.6 cm) front and 20" x 11" (50.8 cm x 27.9 cm) rear 5-open-spoke Bright Silver-painted aluminum
- Carbon Flash Exterior Badge Package
- Exterior accents, Carbon Flash, side vents and front/rear grille accents (Also includes tonneau grille.)
- Glass, Solar-Ray light-tinted- Headlamps, LED
- Mirrors, outside heated, power-adjustable, power-folding driver-side auto-dimming with turn signal indicators
- Wipers, front intermittent

Safety

- Console, floor 2 covered cup holders, auxiliary power outlet, USB ports, auxiliary input jack and lockable storage
- Defogger, rear-window, electric
- Door locks, power programmable with lockout protection- Floor mats, carpeted
- Keyless Open and Start includes 2 remote transmitters that enable automatic door unlock and open by touching door switch
- Mulan leather seating surfaces with perforated inserts
- Rear Camera Mirror inside rearview auto-dimming with full camera display
- Seat adjuster, driver 8-way power- Seat adjuster, power driver lumbar control
- Seats, GT1 bucket- Theft deterrent sensor, vehicle inclination
- Theft deterrent sensor, vehicle interior movement
- Theft-deterrent system, electrical, unauthorized entry, activates the horn
- Theft-deterrent system, vehicle, push button start, immobilizer and audible visual alarm
- Air conditioning, dual-zone automatic climate control individual climate settings for driver and passenger, with outside temperature display
- Air filtration system with pollen filter- Cargo nets, 2
- Chevrolet Connected Access (Subject to terms. See onstar.com or dealer for details.)
- Cruise control, electronic with set and resume speed
- Gauge cluster, 12" diagonal color with driver information display with multiple selectable modes and gauge configurations
- Head-Up Display color display with 3 modes: tour, sport, track; can display speed, gear, tach, shift lights, turn signals, bright headlamps, turn-by-turn navigation, g-meter, speed limit, lap times
- Lighting, interior, theater dimming
- Memory Driver and Passenger Convenience Package includes steering wheel and outside mirrors plus seat memory for both driver and passenger; key fob or door button activated
- Oil life monitoring system- Remote vehicle starter system
- Seat adjuster, driver power bolster- Seat adjuster, passenger 8-way power
- Seat adjuster, passenger power bolster- Seat adjuster, power passenger lumbar control
- Seat belt color, Black- Seats, heated and vented driver and passenger
- Steering column, power tilt and telescopic
- Steering wheel controls, audio, voice recognition, cruise and Driver Information Center
- Steering wheel, heated- Steering wheel, leather-wrapped
- Trunk release, push button open
- Universal Home Remote includes garage door opener, 3-channel programmable, located on driver visor
- Vehicle health management provides advanced warning of vehicle issues
- Visors, driver and passenger illuminated vanity mirrors, covered
- Windows, power with driver and passenger Express-Down/Up
- Wireless Charging for devices

Mechanical

- Differential, mechanical limited-slip
- Transmission, 8-speed dual clutch, includes manual and auto modes
- Brakes, 4-wheel antilock, 4-wheel disc 12.6" (321 mm) front and 13.3" (339 mm) rear brake rotors
- Calipers, Black-painted
- Engine, 6.2L V8 DI, high-output Variable Valve Timing (VVT), Active Fuel Management (AFM) (490 hp [365.4 kW] @ 6450 rpm, 465 lb-ft of torque [627.8 N-m] @ 5150 rpm)

- Exhaust, aluminized stainless-steel with stainless-steel tips - Frame, aluminum structure
- Rear wheel drive- Steering, power, magnetic rack-and-pinion, variable assist
- Suspension, Corvette standard

Dakota Motor Company

Dakota Motor Company

View this car on our website at dakotamotor.com/7020362

Website: dakotamotor.com

Phone: (651) 460-6655

Map: [22098 Canton Court, Farmington, MN 55024](#)

