



2015 Ford Super Duty F-250 Pickup XL Long Bed

Eric Zuwalick

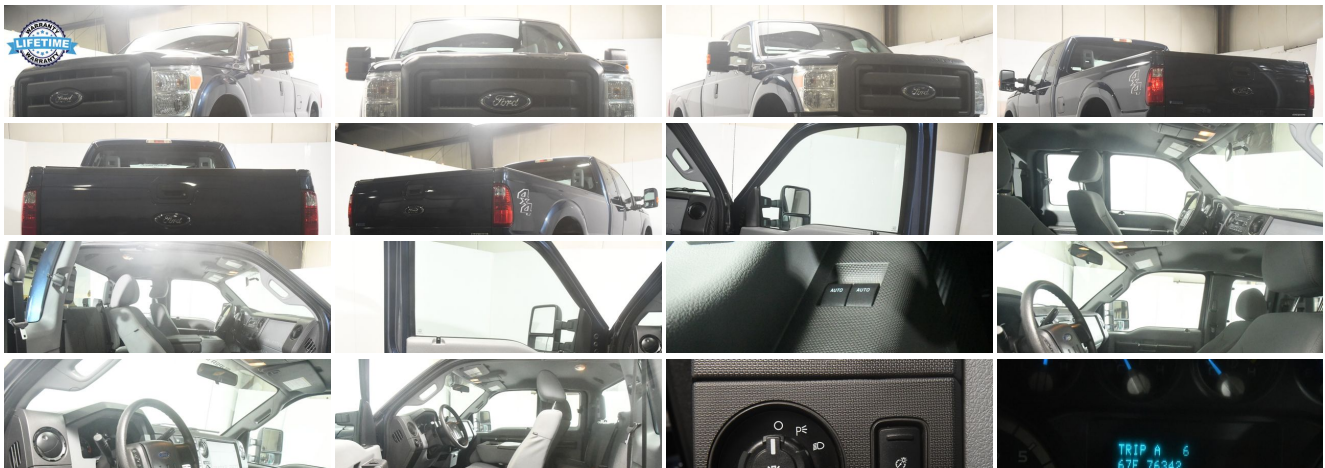
No-Haggle Price \$31,999

View this vehicle on our website at soundautowholesalers.com



139 W Main St, Branford, CT 06405

Photos
Details
Contact





Specifications:

Year:	2015
VIN:	1FT7X2B62FEA35898
Make:	Ford
Stock:	4682
Model/Trim:	Super Duty F-250 Pickup XL Long Bed
Condition:	Pre-Owned
Body:	Pickup Truck
Exterior:	Blue Jeans Metallic
Engine:	ENGINE: 6.2L 2-VALVE SOHC EFI NA V8 FLEX-FUEL
Interior:	Steel Cloth
Mileage:	76,337
Drivetrain:	4 Wheel Drive

Vehicle Description

FREE LIFETIME POWERTRAIN WARRANTY (See Website for Complete Details - not available on Range Rover, Porsche or vehicles with over 100,000 miles). Dan Merriam's Sound Auto Wholesalers is A PLUS RATED by the Better Business Bureau - HIGHEST RATING POSSIBLE. Every vehicle is VALUE PRICED & SOUND AUTO CERTIFIED. CLICK ON THE {CARVANA? CARMAX?} TAB TO SEE HOW WE PROVIDE MORE VALUE AND CONVENIENCE THAN THE NATIONAL COMPETITORS.

Installed Options

Interior

- 4-Way Driver Seat -inc: Manual Recline, Fore/Aft Movement and Manual Lumbar Support
- Front Seats w/Manual Driver Lumbar
- Heavy Duty Vinyl 40/20/40 Split Bench Seat -inc: center armrest, cupholder and storage
- Manual Air Conditioning- 2 12V DC Power Outlets
- 4-Way Passenger Seat -inc: Manual Recline and Fore/Aft Movement
- 60-40 Folding Split-Bench Front Facing Fold-Up Cushion Rear Seat
- Analog Appearance- Day-Night Rearview Mirror- Fade-To-Off Interior Lighting
- Front Cupholder- Front Map Lights- Full Cloth Headliner
- Full Overhead Console w/Storage and 2 12V DC Power Outlets
- Full Vinyl/Rubber Floor Covering
- Gauges -inc: Speedometer, Odometer, Oil Pressure, Engine Coolant Temp, Tachometer, Transmission Fluid Temp, Engine Hour Meter and Trip Odometer
- Glove Box- HVAC -inc: Underseat Ducts- Instrument Panel Bin and Dashboard Storage
- Interior Trim -inc: Chrome Interior Accents - Manual 1st Row Windows
- Manual Adjustable Front Head Restraints and Fixed Rear Head Restraints
- Manual Tilt/Telescoping Steering Column- Manual Vented Rear Windows
- Outside Temp Gauge- Passenger Visor Vanity Mirror
- Securilock Anti-Theft Ignition (pats) Engine Immobilizer- Systems Monitor
- Underhood And Pickup Cargo Box Lights- Urethane Gear Shifter Material

Exterior

- Full-Size Spare Tire Stored Underbody w/Crankdown- Tires: LT245/75Rx17E BSW A/S
- Wheels: 17" Argent Painted Steel -inc: painted hub covers/center ornaments
- Aero-Composite Halogen Headlamps- Black Door Handles
- Black Front Bumper w/2 Tow Hooks- Black Grille
- Black Manual Side Mirrors w/Manual Folding- Black Rear Step Bumper
- Black Side Windows Trim and Black Front Windshield Trim
- Cargo Lamp w/High Mount Stop Light- Clearcoat Paint- Fixed Rear Window
- Front License Plate Bracket- Fully Galvanized Steel Panels- Light Tinted Glass
- Manual Extendable Trailer Style Mirrors- Manual Tailgate/Rear Door Lock
- Regular Box Style- Reverse Opening Rear Doors- Steel Spare Wheel
- Tailgate Rear Cargo Access- Variable Intermittent Wipers

Option Packages

Factory Installed Packages

ENGINE: 6.2L 2-VALVE SOHC EFI NA V8 FLEX-FUEL

BLUE JEANS METALLIC

Safety

- 4-Way Driver Seat -inc: Manual Recline, Fore/Aft Movement and Manual Lumbar Support
- Front Seats w/Manual Driver Lumbar
- Heavy Duty Vinyl 40/20/40 Split Bench Seat -inc: center armrest, cupholder and storage
- Manual Air Conditioning- 2 12V DC Power Outlets
- 4-Way Passenger Seat -inc: Manual Recline and Fore/Aft Movement
- 60-40 Folding Split-Bench Front Facing Fold-Up Cushion Rear Seat
- Analog Appearance- Day-Night Rearview Mirror- Fade-To-Off Interior Lighting
- Front Cupholder- Front Map Lights- Full Cloth Headliner
- Full Overhead Console w/Storage and 2 12V DC Power Outlets
- Full Vinyl/Rubber Floor Covering
- Gauges -inc: Speedometer, Odometer, Oil Pressure, Engine Coolant Temp, Tachometer, Transmission Fluid Temp, Engine Hour Meter and Trip Odometer
- Glove Box- HVAC -inc: Underseat Ducts- Instrument Panel Bin and Dashboard Storage
- Interior Trim -inc: Chrome Interior Accents - Manual 1st Row Windows
- Manual Adjustable Front Head Restraints and Fixed Rear Head Restraints
- Manual Tilt/Telescoping Steering Column- Manual Vented Rear Windows
- Outside Temp Gauge- Passenger Visor Vanity Mirror
- Securilock Anti-Theft Ignition (pats) Engine Immobilizer- Systems Monitor
- Underhood And Pickup Cargo Box Lights- Urethane Gear Shifter Material

Mechanical

- Transmission: TorqShift 6-Speed Automatic -inc: SelectShift- 157 Amp Alternator
- 3.73 Axle Ratio- 3200# Maximum Payload- 35 Gal. Fuel Tank
- 4-Wheel Disc Brakes w/4-Wheel ABS, Front And Rear Vented Discs, Brake Assist and Hill Hold Control
- 72-Amp/Hr 650CCA Maintenance-Free Battery w/Run Down Protection
- Class V Towing Equipment -inc: Hitch and Trailer Sway Control
- Engine: 6.2L 2-Valve SOHC EFI NA V8 Flex-Fuel- Firm Suspension
- Front Anti-Roll Bar- Front Suspension w/Coil Springs
- GVWR: 10,000 lb Payload Package- HD Shock Absorbers
- Hydraulic Power-Assist Steering- Leaf Rear Suspension w/Leaf Springs
- Manual Locking Hubs- Manual Transfer Case- Part-Time Four-Wheel Drive
- Single Stainless Steel Exhaust- Trailer Wiring Harness- Transmission w/Oil Cooler

Prices do not include sales tax, registration fees and dealer conveyance fee of 799. If you have a trade-in your sales tax will be reduced based on the difference between the car you are purchasing and your trade-in. Final credit decisions are made by lenders. The advertised price is the price for this vehicle in its current condition. Any alterations, upgrades, installations, cosmetic work, or any other additions requested by the customer would incur an additional cost, to be added to the selling price of the vehicle. The price does not include sales tax, vehicle registration charges, cost of additional requests by the customer, finance charges, processing charges, or any other charges required by law. The dealer reserves the right to pass all vehicles through Connecticut State inspection prior to delivery. The dealer attempts to update this inventory on a regular basis, however, there can be a delay between the sale of a vehicle and the update of the dealer's online inventory. Advertised price does not include sales tax, vehicle registration charges, cost of additional requests by the customer, finance charges, processing charges, or any other charges required by law. Vehicles are sold cosmetically as is and equipped as is. Costs incurred by Sound Auto Wholesalers as a result of customer requests are not included in advertised prices. Customer must present a signed copy of this ad at the time of purchase. Online pricing excludes all prior offers, and may not be combined with any other offers, coupons, or discounts. Vehicle options and pricing are subject to change. Special price includes all dealer rebates and incentives. Finance promotions based on tier 1 credit approval after 20% down payment. All online prices expire at 12:01 PM today. Sound Auto Wholesalers will honor expired advertised prices up to 24 hours after expiration, provided the customer presents a signed, printed copy of the advertised price at the start of their visit. We make every effort to adequately represent the condition and features of all our inventory including vehicle information, pictures, pricing, and status but there may be inaccuracies. Sound Auto Wholesalers assumes no responsibility for inaccuracies in online information nor is it responsible for errors in any third-party advertisements. Please confirm any questions or concerns by contacting Sound Auto Wholesalers directly. EPA mileage estimates are based on model year EPA mileage ratings and are for comparison purposes only. Your actual mileage will vary depending on how you drive and maintain your vehicle. Before purchasing this vehicle, it is solely the customer's responsibility to address any and all differences between the information on this website and the actual vehicle specifications and/or warranties offered prior to the sale of this vehicle. Vehicle data on this website is compiled from publicly available sources believed by the publisher to be reliable. Vehicle data is subject to change without notice. The publisher assumes no responsibility for errors and/or omissions in this data and its compilation, and makes no representations expressed or implied to any actual or prospective purchaser of the vehicle as to the condition of the vehicle, vehicle specifications, ownership, vehicle history, equipment/accessories, price, or warranties. We are A-Plus Rated by The Better Business Bureau.

Sound Auto Wholesalers

Sound Auto Wholesalers

View this car on our website at soundautowholesalers.com/7020156

Website: soundautowholesalers.com

Phone:

Map: [139 W Main St, Branford, CT 06405](#)

