



2021 CADILLAC ESCALADE ESV 4WD SPORT PACKAGE ONLY 7K MILES LIKE NEW!

Our Price \$142,900

View this vehicle on our website at njtruckking.com

King of Cars and Trucks

[856-693-3181](tel:856-693-3181)

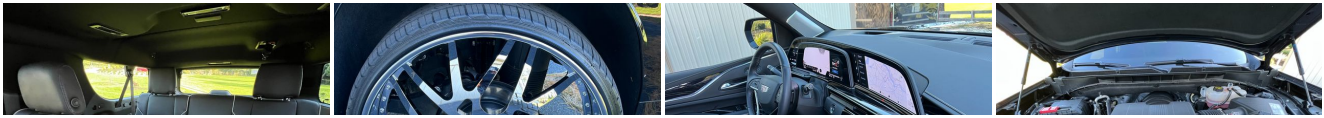
1229 Broadway , Westville, New Jersey 08093

Photos

Details

Contact





Specifications:

Year:	2021
VIN:	1GYS4PKL7MR279973
Make:	CADILLAC ESCALADE ESV 4WD
Model/Trim:	SPORT PACKAGE ONLY 7K MILES LIKE NEW!
Condition:	Pre-Owned
Body:	SUV
Exterior:	Black
Engine:	ENGINE, 6.2L V8 WITH DYNAMIC FUEL MANAGEMENT
Interior:	Black Leather
Mileage:	7,904
Drivetrain:	4 Wheel Drive
Economy:	City 13 / Highway 19

Vehicle Description

2021 CADILLAC ESCALADE ESV SPORT PACKAGE
 4X4
 V8 ENGINE
 AUTOMATIC TRANSMISSION
 (ONLY 7,904 ORIGINAL/ ACTUAL MILES)
 CLEAN CARFAX
 LIKE NEW!
 FULLY LOADED
 30" STAGGERED FORGIATOS
 BIG FLOATER CAPS
 NEW TIRES
 FULL TINT
 STRAIGHT KILLER
 DONT MISS IT!
 IMPOSSIBLE TO FIND RIGHT NOW!

BUY IT NOW!
 \$142,900
 CALL / TEXT ZACH 609-504-8808 WITH ANY QUESTIONS

Vehicle History Report : as Of 05/17/2025



Snapshot

2021 CADILLAC ESCALADE ESV SPORT



Damage reported: minor damage

MINOR MODERATE SEVERE

6 Service history records

Installed Options

Interior

- Air conditioning, rear
- Climate control, tri-zone automatic with individual climate settings for driver, right-front passenger and rear passengers (includes rear air vents)
- Cruise control, electronic with set and resume speed (Upgradable to (KSG) Adaptive Cruise Control when (ST1) Driver Assist Tech Package is ordered.)
- Door locks, power programmable with lockout protection and delayed locking
- Floor mats, color-keyed carpeted first and second row, removable
- Keyless Open includes extended range Remote Keyless Entry
- Memory settings includes two "presets" for driver seat adjuster, outside mirrors and power tilt/telescoping steering column
- Rear Camera Mirror- Seat trim, Leather
- Seats, front bucket (Includes 12-way driver and front passenger adjustments.)
- Seats, heated and ventilated driver and front passenger
- Seats, heated driver and front passenger
- Seats, second row bucket, power release (May substitute (ATT) second row 60/40 split-



3 Previous owners



Personal vehicle



33,100 Last reported odometer reading



FREE CARFAX Report

See the full CARFAX Report for additional information

*carfax Snapshot is a reflection of available information on the date the report was pulled. carfax is constantly being updated with new information and is subject to change at any time.

folding bench seats.)

- Seats, third row 60/40 split-bench, power-folding- Sensor, glass breakage
- Steering column, power tilt and telescoping
- Steering wheel controls, audio, phone, cruise control Conversation Enhancement, gap distance and heated steering wheel
- Steering wheel, heated, automatic
- Theft-deterrent alarm system, content theft alarm, self-powered horn
- Theft-deterrent system, unauthorized entry, engine immobilizer- Adaptive Remote Start
- Air Ionizer
- Ambient lighting, interior selectable for instrument panel, doors, footwell, map pocket and door pull cups
- Augmented Reality live image of what is in front of the vehicle displayed on the 14.2" diagonal Cluster Display. When a navigational route is active, the system will overlay directional information on the live image being displayed.
- Console, floor with covered storage, large and small storage bins, dual cup holders, electronic climate controls and second row heated seat controls. Also includes auxiliary power outlet, USB A/C ports and 110-volt outlet
- Console, overhead- Defogger, rear-window- Door lock and latch shields
- Floor covering, color-keyed carpeting
- Head-Up Display, full-color, reconfigurable (includes the following views: Speed, Audio/Phone, Navigation and Performance)
- Keyless Start, push-button- Power outlet, 110-volt- Rear Seat Reminder
- Seat adjuster, driver 4-way power lumbar- Seat adjuster, driver 8-way power
- Seat adjuster, front passenger 4-way power lumbar
- Seat adjuster, front passenger 8-way power- Seats, heated second row outboard seats
- Sensor, vehicle inclination- Sensor, vehicle interior movement
- Universal Home Remote includes garage door opener, programmable
- Window control, all windows, Express-Up/Down (auto Express-Up/Down via key fob)
- Wireless Phone Charging located in the console just in front of the console bin lid (The system wirelessly charges one compatible mobile device. Some phones have built-in wireless charging technology and others require a special adaptor/back cover. To check for phone or other device compatibility, see my.cadillac.com/learnAbout/wireless-charging or consult your carrier.)

Exterior

- Assist steps, running board (Upgradeable to (B3L) power-retractable assist steps.)
- Luggage rack, roof-mounted, Gloss Black
- Wheels, 22" (55.9 cm) 12-Spoke alloy, Polished with Dark Android finish
- Active Aero Shutters, front (Deleted when (LM2) 3.0L Turbo Diesel engine is ordered.)
- Door handles, body-color- Door handles, illuminating
- Glass, acoustic, laminated windshield- Glass, deep-tinted
- Hands-Free Liftgate open and close, programmable memory height, with Cadillac branded projection light
- Headlamp control, automatic leveling system- Headlamps, LED
- Headlamps, automatic on/off- IntelliBeam, automatic high beam on/off
- Mirrors, outside heated power-adjustable power-folding, body-color, driver-side auto-dimming, integrated turn signal indicators and puddle lighting
- Moldings, Gloss Black, bodyside- Rear Camera Mirror Washer
- Spare tire lock, hoist shaft
- Sunroof, power, panoramic with tilt, slide, express-open/close and sun shade control
- Tail lamps, LED illumination- Tire, spare 265/70R17SL all-season, blackwall
- Tires, 275/50R22SL all-season, blackwall- Windshield, solar absorbing
- Wiper, rear intermittent- Wipers, front intermittent, Rainsense

Safety

- Air conditioning, rear
- Climate control, tri-zone automatic with individual climate settings for driver, right-front passenger and rear passengers (includes rear air vents)
- Cruise control, electronic with set and resume speed (Upgradable to (KSG) Adaptive Cruise Control when (ST1) Driver Assist Tech Package is ordered.)
- Door locks, power programmable with lockout protection and delayed locking
- Floor mats, color-keyed carpeted first and second row, removable
- Keyless Open includes extended range Remote Keyless Entry
- Memory settings includes two "presets" for driver seat adjuster, outside mirrors and power tilt/telescoping steering column
- Rear Camera Mirror- Seat trim, Leather
- Seats, front bucket (Includes 12-way driver and front passenger adjustments.)
- Seats, heated and ventilated driver and front passenger
- Seats, heated driver and front passenger
- Seats, second row bucket, power release (May substitute (ATT) second row 60/40 split-folding bench seats.)
- Seats, third row 60/40 split-bench, power-folding- Sensor, glass breakage
- Steering column, power tilt and telescoping
- Steering wheel controls, audio, phone, cruise control Conversation Enhancement, gap

- distance and heated steering wheel
- Steering wheel, heated, automatic
- Theft-deterrent alarm system, content theft alarm, self-powered horn
- Theft-deterrent system, unauthorized entry, engine immobilizer- Adaptive Remote Start
- Air Ionizer
- Ambient lighting, interior selectable for instrument panel, doors, footwell, map pocket and door pull cups
- Augmented Reality live image of what is in front of the vehicle displayed on the 14.2" diagonal Cluster Display. When a navigational route is active, the system will overlay directional information on the live image being displayed.
- Console, floor with covered storage, large and small storage bins, dual cup holders, electronic climate controls and second row heated seat controls. Also includes auxiliary power outlet, USB A/C ports and 110-volt outlet
- Console, overhead- Defogger, rear-window- Door lock and latch shields
- Floor covering, color-keyed carpeting
- Head-Up Display, full-color, reconfigurable (includes the following views: Speed, Audio/Phone, Navigation and Performance)
- Keyless Start, push-button- Power outlet, 110-volt- Rear Seat Reminder
- Seat adjuster, driver 4-way power lumbar- Seat adjuster, driver 8-way power
- Seat adjuster, front passenger 4-way power lumbar
- Seat adjuster, front passenger 8-way power- Seats, heated second row outboard seats
- Sensor, vehicle inclination- Sensor, vehicle interior movement
- Universal Home Remote includes garage door opener, programmable
- Window control, all windows, Express-Up/Down (auto Express-Up/Down via key fob)
- Wireless Phone Charging located in the console just in front of the console bin lid (The system wirelessly charges one compatible mobile device. Some phones have built-in wireless charging technology and others require a special adaptor/back cover. To check for phone or other device compatibility, see my.cadillac.com/learnAbout/wireless-charging or consult your carrier.)

Mechanical

- Brakes, 4-wheel antilock, 4-wheel disc- Hitch Guidance with Hitch View
 - Suspension, Magnetic Ride Control- Tow/Haul mode selector
 - Transmission, 10-speed automatic electronically controlled with overdrive, tow/haul mode and tap up/tap down shifting (Most vehicles built on or after 6-7-2021 with a V8 engine will have (NSS) Not Equipped with Automatic Stop/Start, which removes Automatic Stop/Start, Engine control stop/start disable button and its content.)
 - Air cleaner, high-capacity
 - Automatic Stop/Start (Standard on vehicles built before 6-7-2021. Most vehicles built on or after 6-7-2021 equipped with a V8 engine will have (NSS) Not Equipped with Automatic Stop/Start, which removes Automatic Stop/Start, Engine control stop/start disable button and its content. See dealer for details.)
 - Brake lining wear indicator- Brake rotors, Duralife- Brake, automatic vehicle hold
 - Brakes, Hill Start-Assist/Hill hold- Capless Fuel Fill
 - Cooling, external engine oil cooler (Deleted when (LM2) 3.0L Turbo Diesel engine is ordered.)
 - Cooling, external transmission oil cooler, heavy-duty air-to-oil
 - Differential, electronic limited-slip- Electric Parking Brake- Electronic Precision Shift
 - Engine air filtration monitor
 - Engine control, stop/start system disable button (Standard on vehicles built before 6-7-2021. Most vehicles built on or after 6-7-2021 equipped with a V8 engine will have (NSS) Not Equipped with Automatic Stop/Start, which removes Automatic Stop/Start, Engine control stop/start disable button and its content. See dealer for details.)
 - Engine, 6.2L V8 with Dynamic Fuel Management Direct Injection and Variable Valve Timing, includes aluminum block construction (420 hp [313.2 kW] @ 5600 rpm, 460 lb-ft of torque [623.7 Nm] @ 4100 rpm)
 - Exhaust, dual with polished outlets- Four wheel drive
 - GVWR, 7700 lbs. (3493 kg) (2WD models included and only available with (LM2) 3.0L Turbo Diesel engine. Standard on 4WD models.)
 - Hitch Guidance dynamic single line to aid in trailer alignment for hitching
 - In-vehicle Trailing App, System includes checklist, trailer maintenance reminders, trailer security alerts, trailer mileage, tow/haul reminder, trailer electrical diagnostics and Trailer Tire Pressure Monitor System module
 - Locking fuel door- Rear axle, 3.23 ratio- Steering, Electronic Power Steering (EPS)
 - Trailer brake controller, integrated
 - Trailing equipment, heavy-duty includes trailing hitch platform, 7-wire harness with independent fused trailing circuits and 7-way sealed connector
 - Transfer case, active, single-speed, push-button controls does not include neutral. Cannot be dinghy towed. (Upgradeable to (NQH) 2-speed electronic transfer case when (ZM1) Heavy-Duty Trailing Package is ordered. 4WD models only.)
-

Option Packages

Factory Installed Packages

ENGINE, 6.2L V8 WITH DYNAMIC FUEL MANAGEMENT

Direct Injection and Variable Valve Timing,
includes aluminum block construction (420 hp
[313.2 kW] @ 5600 rpm, 460 lb-ft of torque
[623.7 Nm] @ 4100 rpm)

King of Cars and Trucks

King of Cars and Trucks

View this car on our website at njtruckking.com/7019902

Website: njtruckking.com

Phone: 856-693-3181

Map: [1229 Broadway, Westville, New Jersey 08093](#)

