



1995 FORD F350 XLT 7.3L POWERSTROKE DIESEL 4X4 37K MILES 1-OWNER TIME CAPSULE!

Our Price \$49,900

View this vehicle on our website at njtrucking.com

King of Cars and Trucks

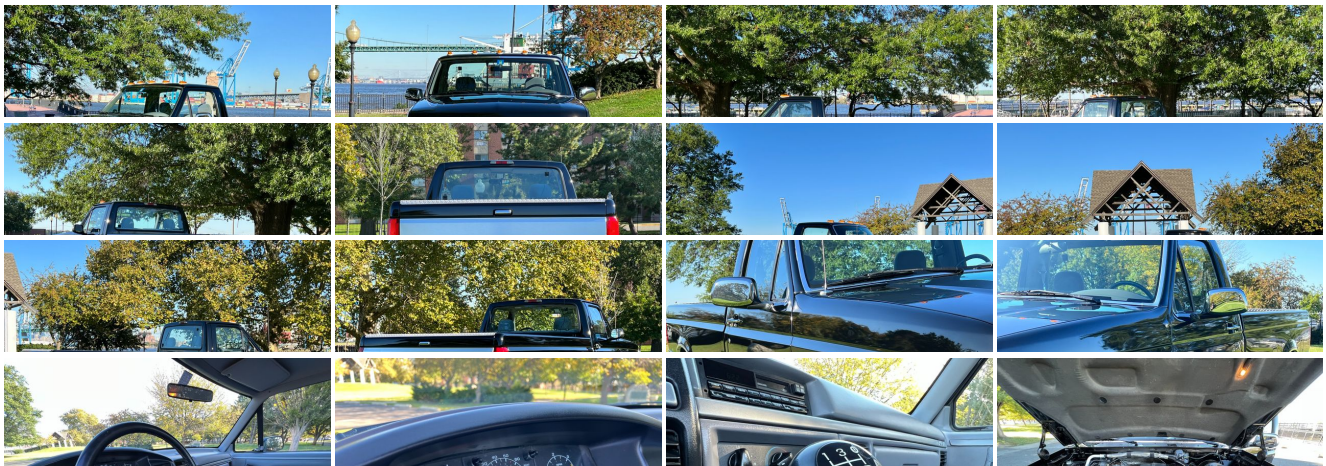
856-693-3181

1229 Broadway , Westville, New Jersey 08093

Photos

Details

Contact





Specifications:

Year:	1995
VIN:	2FTHF36F9SCA00668
Make:	FORD F350 XLT 7.3L
Model/Trim:	POWERSTROKE DIESEL 4X4 37K MILES 1-OWNER TIME CAPSULE!
Condition:	Pre-Owned
Exterior:	Black
Engine:	7.3L (444) DI V8 TURBO-DIESEL ENGINE
Interior:	Gray
Transmission:	HD 5-SPEED MANUAL TRANSMISSION W/OD (REQ: 99F Engine)
Mileage:	37,427
Drivetrain:	4 Wheel Drive

Vehicle Description

TIME CAPSULE 37K MILE OBS FORD

1995 FORD F-350

REG CAB

4X4

~XLT~

7.3L POWERSTROKE TURBO DIESEL !

5-SPEED MANUAL TRANSMISSION

(ONLY 37,427 ORIGINAL / ACTUAL MILES)

YES 37K ORIGINAL MILES!

TIME CAPSULE

RARE RARE RARE

1-OWNER

GARAGE KEPT

CLEAN CARFAX

ALL POWER OPTIONS

RUNS DRIVES AND SHOWS LIKE NEW

ORIGINAL PAINT EXCELLENT / LASER STRAIGHT BODY

UNDERSIDE EXCELLENT

ORIGINAL OWNERS MANUALS

BEST COLOR COMBO

COLLECTOR QUALITY

RARE OF THE RARE 7.3L OBS R-CAB 4X4 5-SPEED MANUAL

WILL NOT LAST LONG!

DONT MISS IT!

\$49,900

CALL /TEXT ZACH 609-504-8808 WITH ANY QUESTIONS

Installed Options

Interior

- Vinyl bench seat w/outboard seating position adjustable headrests
- 12" day/night rearview mirror- Black scuff plates- Black vinyl steering wheel
- Cigarette lighter- Color-keyed RH coat hook
- Color-keyed door trim panels w/black handles, reflector- Color-keyed floor covering
- Color-keyed instrument panel w/black appliques, side window demisters, four air registers, glove box
- Color-keyed vinyl sun visors w/LH retainer band- Dome/glove box/ashtray lights
- Dual-door-operated courtesy light- Electronic AM radio w/digital clock, 2 speakers
- Inside hood release- Pwr point
- Trip odometer, voltmeter, oil pressure/temp/fuel gauges w/indicator lights- Vent windows

Exterior

- "4 x 4" decal- Aero halogen headlights w/impact-resistant lenses- Argent grille
- Bright windshield molding- Chrome front bumper- Dual black manual mirrors
- High-mounted stop light w/cargo box light- Interval wipers
- Removable tailgate w/bright release handle- Tinted glass
- Wraparound front parking/turn signal lights- Wraparound tail lights

Mechanical

- (4) 16" x 7.0" 8-hole argent steel wheels w/bright hub caps
- Automatic locking front hubs- Four wheel drive
- LT235/85R16E all-season SBR BSW tires- Pwr brakes w/rear wheel anti-lock
- 2-speed transfer case- 3.55 axle ratio
- 3400# capacity front multi-leaf/7596# capacity rear multi-leaf springs
- 5.8L (351) MFI V8 engine- 5000# capacity mono-beam front axle
- 6250# capacity full-floating rear axle- 72 amp-hour (650 CCA) maintenance-free battery
- 8' pickup box- 9000# GVWR/3940# maximum payload- 95 amp alternator
- Dual fuel tanks (19.0 gallon front/18.2 gallon rear)
- HD 5-speed manual transmission w/OD- HD gas-pressurized shock absorbers
- Pwr steering- Single rear wheels

Option Packages

Factory Installed Packages

7.3L (444) DI V8 TURBO-DIESEL ENGINE-inc:dual 84 amp-hour batteries, 130 amp alt, 1000 watt engine block heater, tachometer, super engine cooling,chrome slotted front bumper, integral engine oil cooler,vacuum pump,sound reduction pkg, diesel engine light cluster,fuel filter/heater/water separator (REQ:44C or 44E Trans) (REQ:512 or 515 Spare Tire or 513 Spare Wheel or 76C or 768 Rear Bumper)

\$4,139

HD 5-SPEED MANUAL TRANSMISSION W/OD (REQ: 99F Engine)

Option Packages Total

\$4,139

King of Cars and Trucks

King of Cars and Trucks

View this car on our website at njtruckking.com/7019243

Website: njtruckking.com

Phone: 856-693-3181

Map: 1229 Broadway, Westville, New Jersey 08093

