



2000 BMW Z3 M

Danny Diedrich 602-513-3298

Our Price \$0

View this vehicle on our website at arizonaclassiccarsales.com

Arizona Classic Car Sales

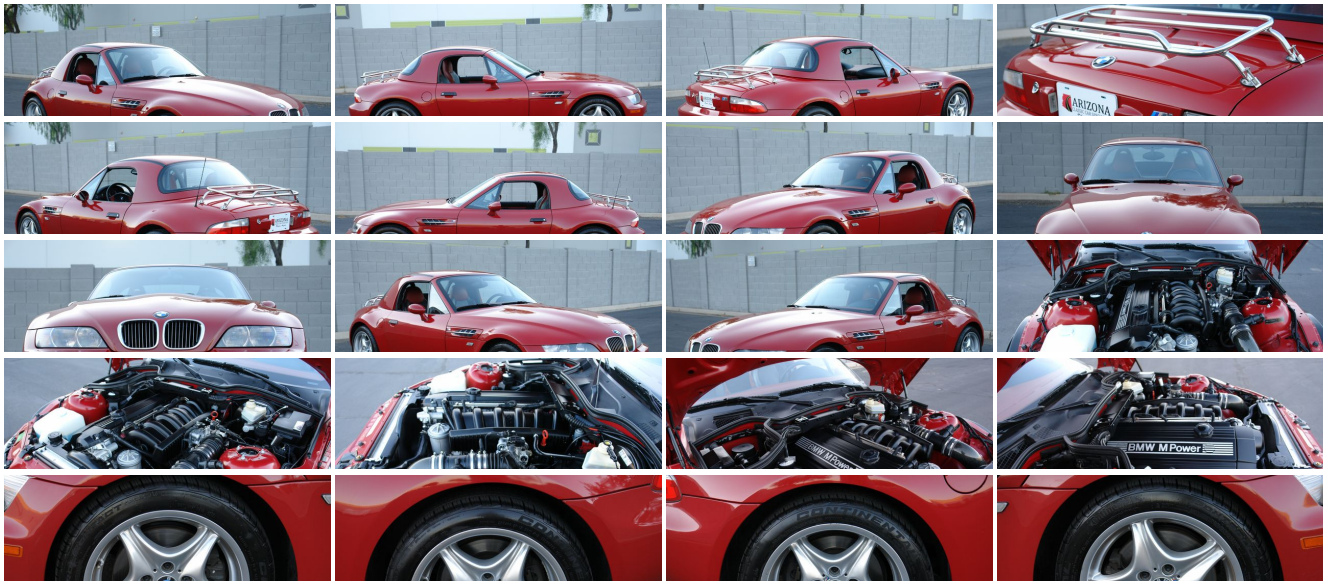
[602-513-3298](tel:602-513-3298)

2010 W. Parkside Ln. #118 , Phoenix, AZ 85027

Photos

Details

Contact



Specifications:

Year:	2000
VIN:	WBSCK9347YLC90236
Make:	BMW
Stock:	C90236
Model/Trim:	Z3 M
Condition:	Pre-Owned
Body:	Convertible
Exterior:	Red
Engine:	3.2L (192) DOHC 24-valve in-line 6-cyl engine w/variable valve timing
Interior:	Black Leather
Mileage:	30,540
Drivetrain:	Rear Wheel Drive
Economy:	City 19 / Highway 26

Vehicle Description

Installed Options

Interior

- Nappa leather seats/dashboard trim
- Premium Harmon/Kardon sound system-inc: anti-theft AM/FM stereo w/cassette, radio data system (RDS),high-performance multi-channel amplifier, subwoofer, (8) speakers
- 4-way pwr heated sport bucket seats - Air conditioning- Central locking system
- Chrome trim-inc: instrument/center console switches, shift boot surrounds, inside door handles/lock buttons, handbrake release button, headlight switch
- Cruise control- Dual sunvisor vanity mirrors- Electronic analog tachometer
- Leather-wrapped 3-spoke steering wheel
- Microchip dynamic encoded key anti-theft driveaway protection
- Pre-wiring for CD changer- Pwr windows-inc: 1-touch operation
- Service interval indicator

Exterior

- Pwr 2-layer lined soft convertible top- Rollover protection bars- Body-color bumpers
- Chrome trim grille/headlight-ring- Dual pwr heated mirrors- Halogen headlights
- Heated driver door lock cylinder
- M sport styling-inc: front spoiler, ground effects, side skirts
- Vehicle-speed sensitive intermittent windshield wipers

Safety

- Nappa leather seats/dashboard trim
- Premium Harmon/Kardon sound system-inc: anti-theft AM/FM stereo w/cassette, radio data system (RDS),high-performance multi-channel amplifier, subwoofer, (8) speakers
- 4-way pwr heated sport bucket seats - Air conditioning- Central locking system
- Chrome trim-inc: instrument/center console switches, shift boot surrounds, inside door handles/lock buttons, handbrake release button, headlight switch
- Cruise control- Dual sunvisor vanity mirrors- Electronic analog tachometer
- Leather-wrapped 3-spoke steering wheel
- Microchip dynamic encoded key anti-theft driveaway protection
- Pre-wiring for CD changer- Pwr windows-inc: 1-touch operation
- Service interval indicator

Mechanical

- 4-wheel anti-lock brake system (ABS)- All season traction control- 13.5 gallon fuel tank
- 17" x 7.5" front/17" x 9.0" rear roadstar alloy wheels
- 3.2L (192) DOHC 24-valve in-line 6-cyl engine w/variable valve timing
- 4 polished steel exhaust pipes w/chrome plated tips - 4-wheel ventilated disc brakes
- 5-speed manual transmission w/direct 5th gear
- Damaged tire temporary repair M Mobility System
- Engine-speed-sensitive pwr rack & pinion steering- Front/rear stabilizer bars
- Limited slip differential- M sport suspension calibration w/anti-dive design
- P225/45ZR17 high-performance SBR front tires
- P245/40ZR17 high-performance SBR rear tires- Rear wheel drive
- Semi-trailing arm rear suspension- Strut-type front suspension w/arc-shaped lower arms

Arizona Classic Car Sales

Arizona Classic Car Sales

View this car on our website at arizonaclassiccarsales.com/7019147

Website: arizonaclassiccarsales.com

Phone: 602-513-3298

Map: [2010 W. Parkside Ln. #118, Phoenix, AZ 85027](#)

